

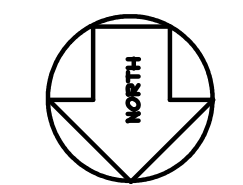
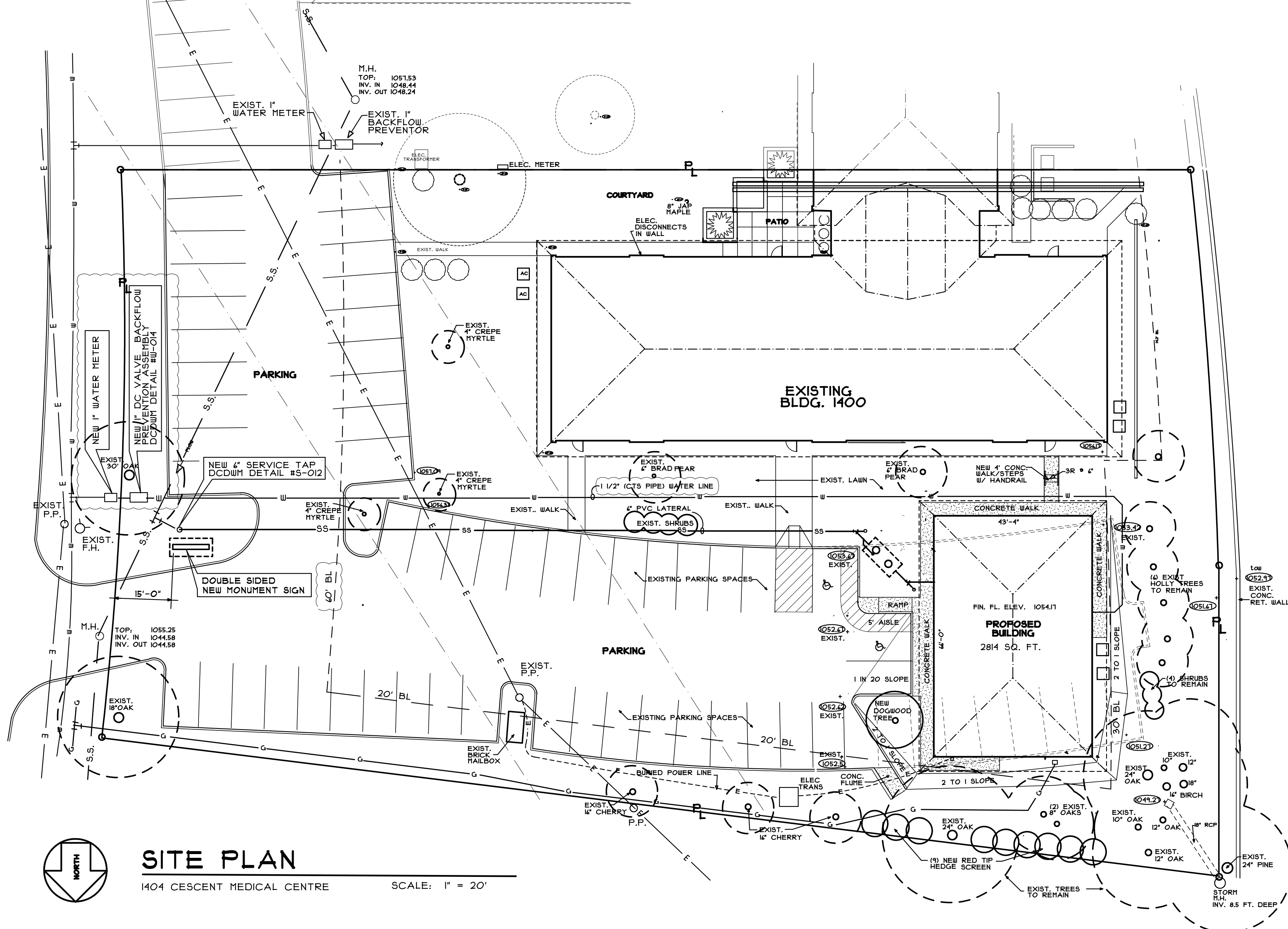
DAVID L. HOLLOWAY & ASSOCIATES
ARCHITECT
 1963 WINDCREST DRIVE LILBURN, GA. (678) 908-6654

NO.	REVISION	BY	DATE
1		DLH	

MEDICAL OFFICE LEASE SPACE BUILDING
 FOR
CRESCENT MEDICAL CENTRE, LLC
 AT
 CRESCENT MEDICAL CENTER
 1404 MONTREAL ROAD
 TUCKER, GEORGIA

DRAWN : DLH CHECKED : DLH
 DATE :
 SCALE : AS NOTED
 JOB NO. :
 SHEET
SIGN
 AUGUST 11, 2020

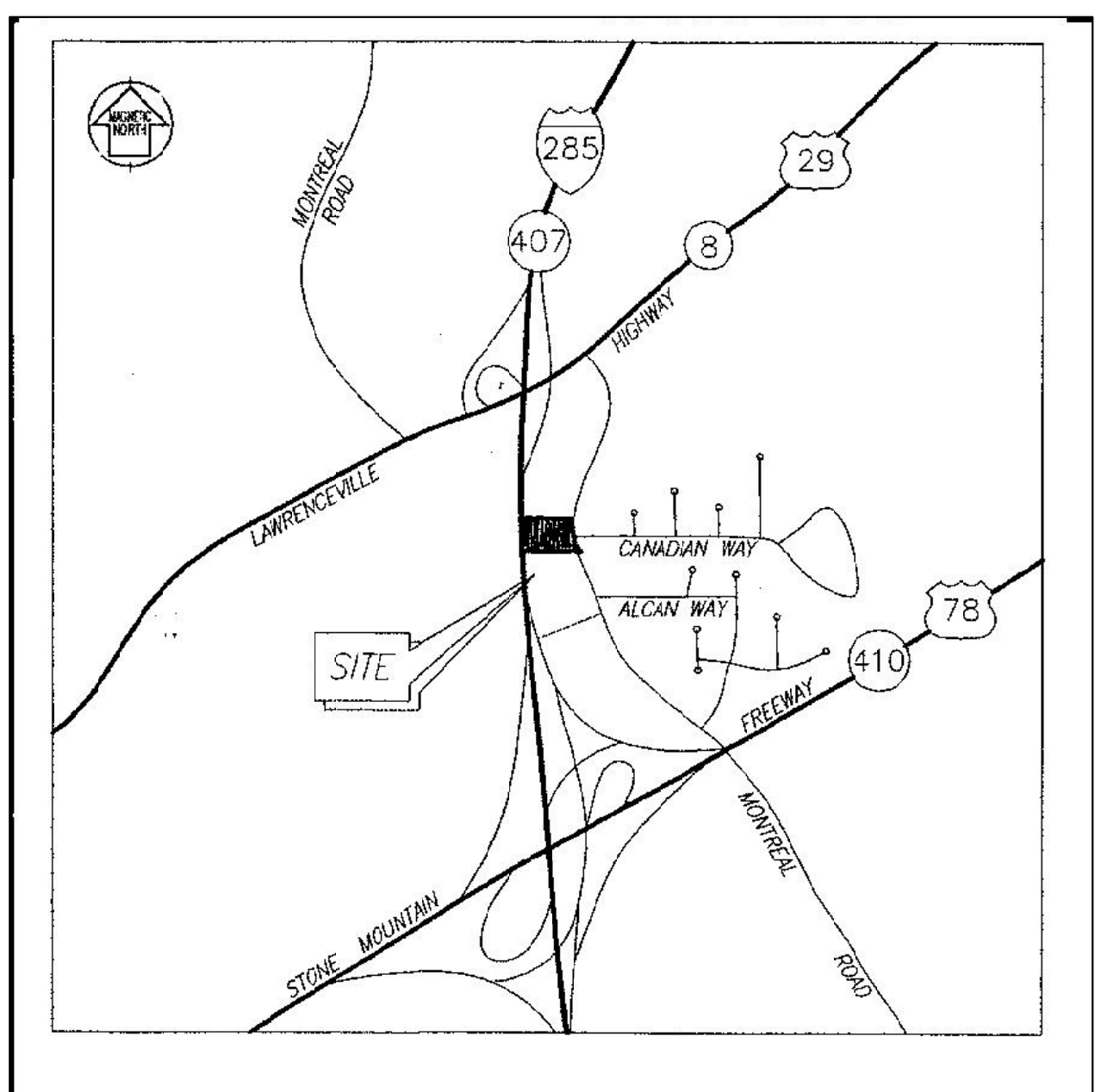
MONTREAL ROAD



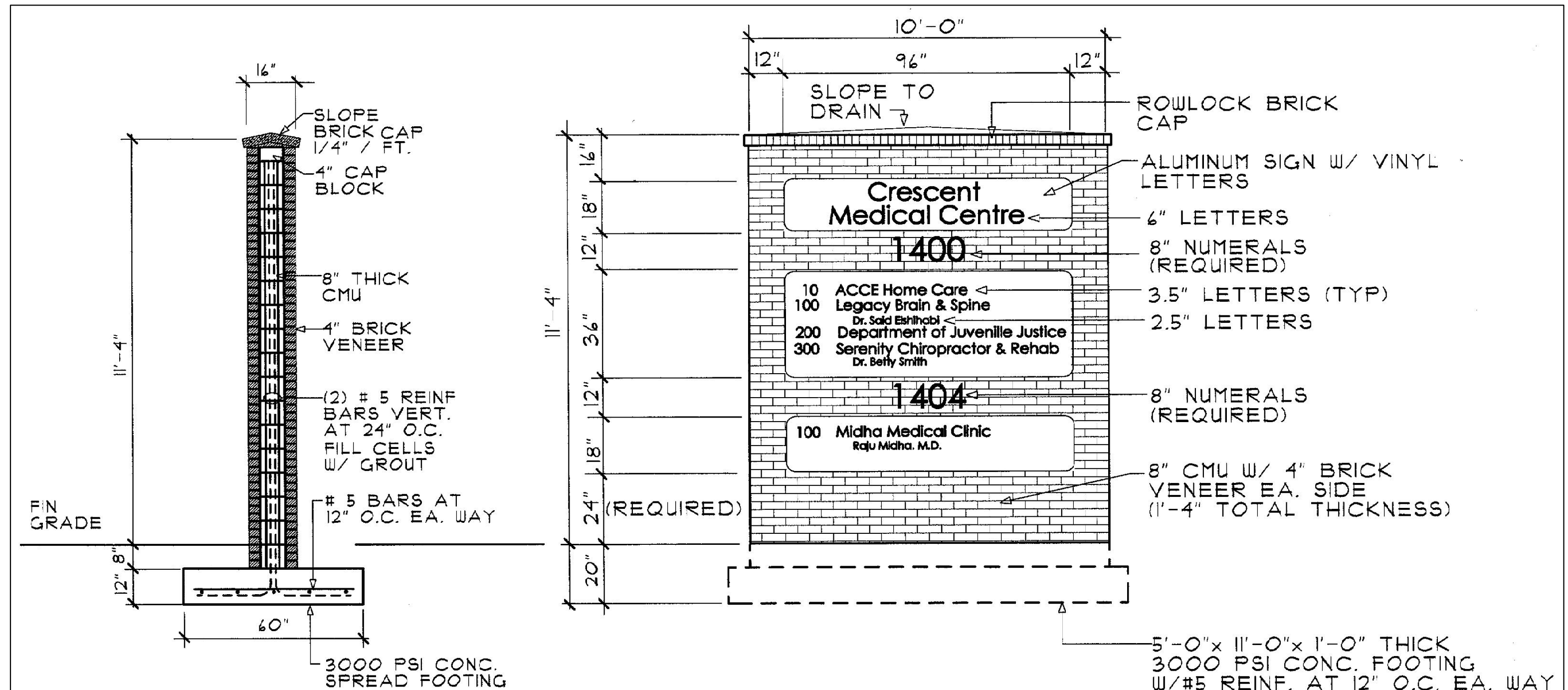
SITE PLAN

1404 CESCENT MEDICAL CENTRE SCALE: 1" = 20'

I-285 EXPRESSWAY (BELOW)



SITE LOCATION MAP



CROSS SECTION

SCALE: 3/8" = 1'-0"

ELEVATION (BOTH SIDES)

SCALE: 3/8" = 1'-0"

MONUMENT SIGN (DOUBLE SIDED)

- SIGN MUST BE 5'-0" BACK FROM R/W STREET AND 10' FROM ELECTRICAL TRANSMISSION LINE
- SIGN MUST BE IN FRONT YARD SETBACK
- MAXIMUM SIGN AREA 150 SQ. FT. (EXCLUDING STREET ADDRESS AND STRUCTURE)
- MAXIMUM ALLOWED HEIGHT 12'
- MAXIMUM ALLOWED WIDTH 15'
- ZONING IS O.E.