

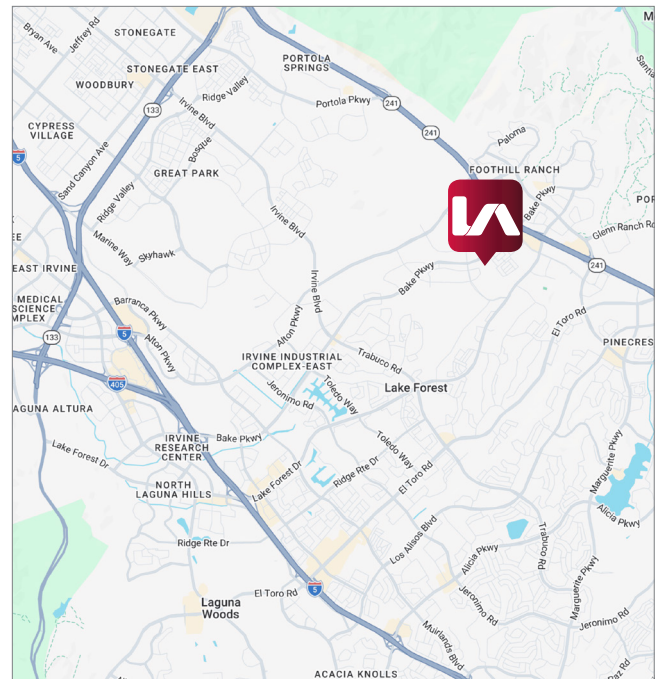
INDUSTRIAL FOR LEASE ENTERPRISE TECHNOLOGY COURT

26170 Enterprise Way, Suite 300-B, Lake Forest



PROPERTY DESCRIPTION

- ±1,056 SF Mezzanine Office
- 3 Private Offices
- Open Area
- Restroom
- Separate Entry
- Part of ±3,372 SF Industrial Condominium



Ted Rommel
trommel@leeirvine.com
D 949.790.3112

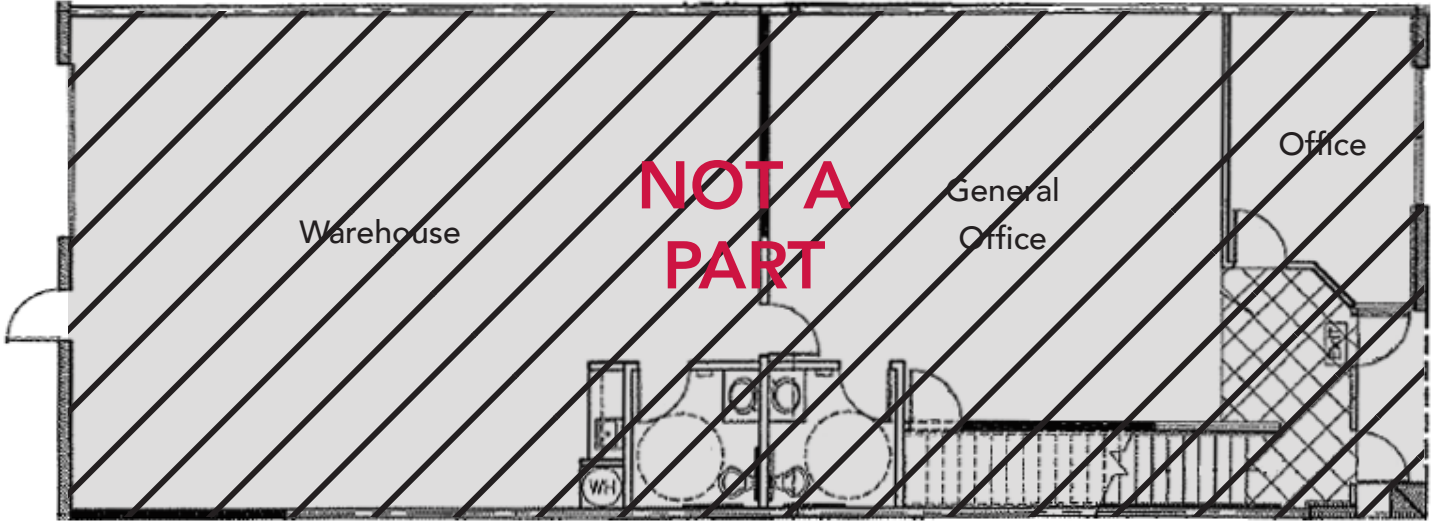
All information furnished regarding property for sale, rental or financing is from sources deemed reliable, but no warranty or representation is made to the accuracy thereof and same is submitted to errors, omissions, change of price, rental or other conditions prior to sale, lease or financing or withdrawal without notice. No liability of any kind is to be imposed on the broker herein.

INDUSTRIAL FOR LEASE ENTERPRISE TECHNOLOGY COURT

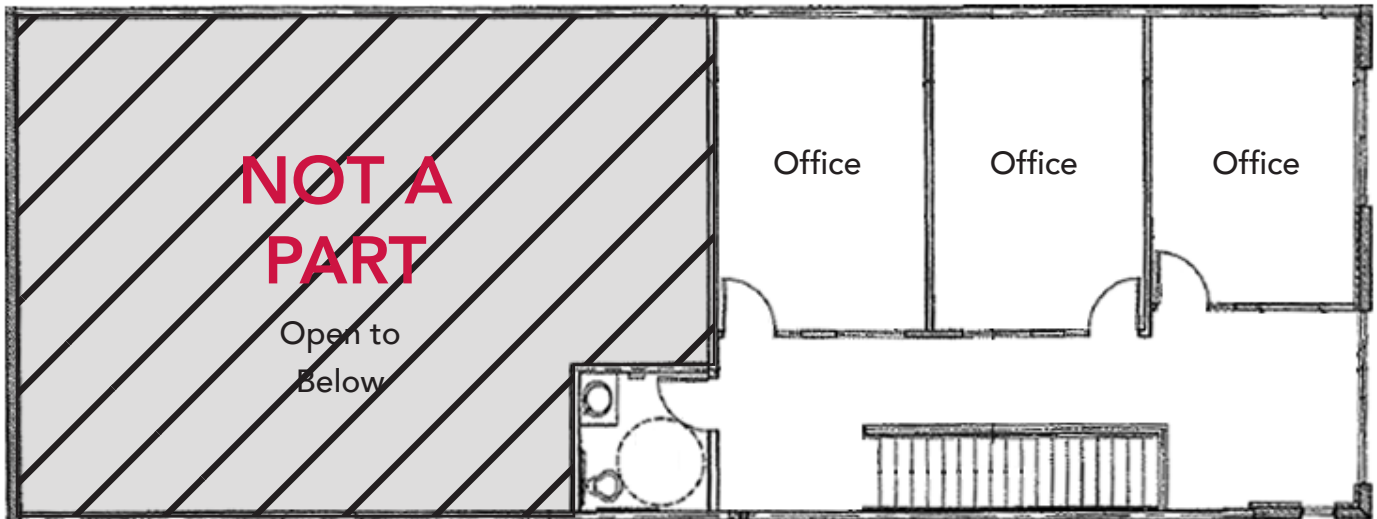
26170 Enterprise Way, Suite 300-B, Lake Forest

FLOOR PLAN

FIRST FLOOR



SECOND FLOOR



Ted Rommel
trommel@leeirvine.com
D 949.790.3112

All information furnished regarding property for sale, rental or financing is from sources deemed reliable, but no warranty or representation is made to the accuracy thereof and same is submitted to errors, omissions, change of price, rental or other conditions prior to sale, lease or financing or withdrawal without notice. No liability of any kind is to be imposed on the broker herein.