

CROSSLAND OTTER HUNT

13-14 Buckingham Street,
London,
WC2N 6DF

Beautiful period offices To Let

381 - 4,424 sq ft

381 to 4,424 sq ft (35.40 to 411 sq
m)

020 7408 1114
www.coh.eu



CROSSLAND OTTER HUNT

13-14 Buckingham Street,
London,
WC2N 6DF

Beautiful period offices To Let

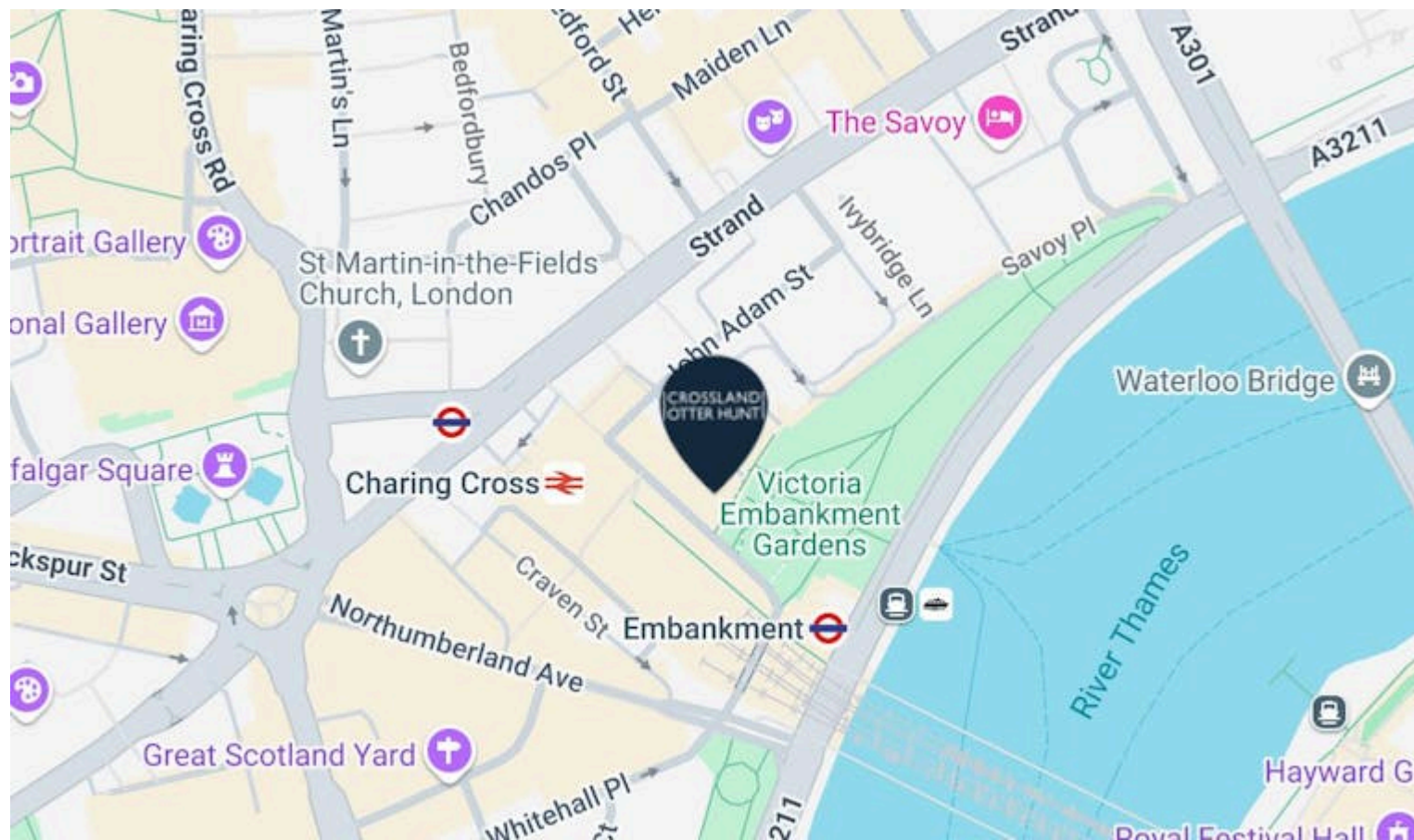
381 - 4,424 sq ft

381 to 4,424 sq ft (35.40 to 411 sq
m)

[View Online →](#)

020 7408 1114

www.coh.eu



Nearest Stations



Embankment
(0.1 Miles)

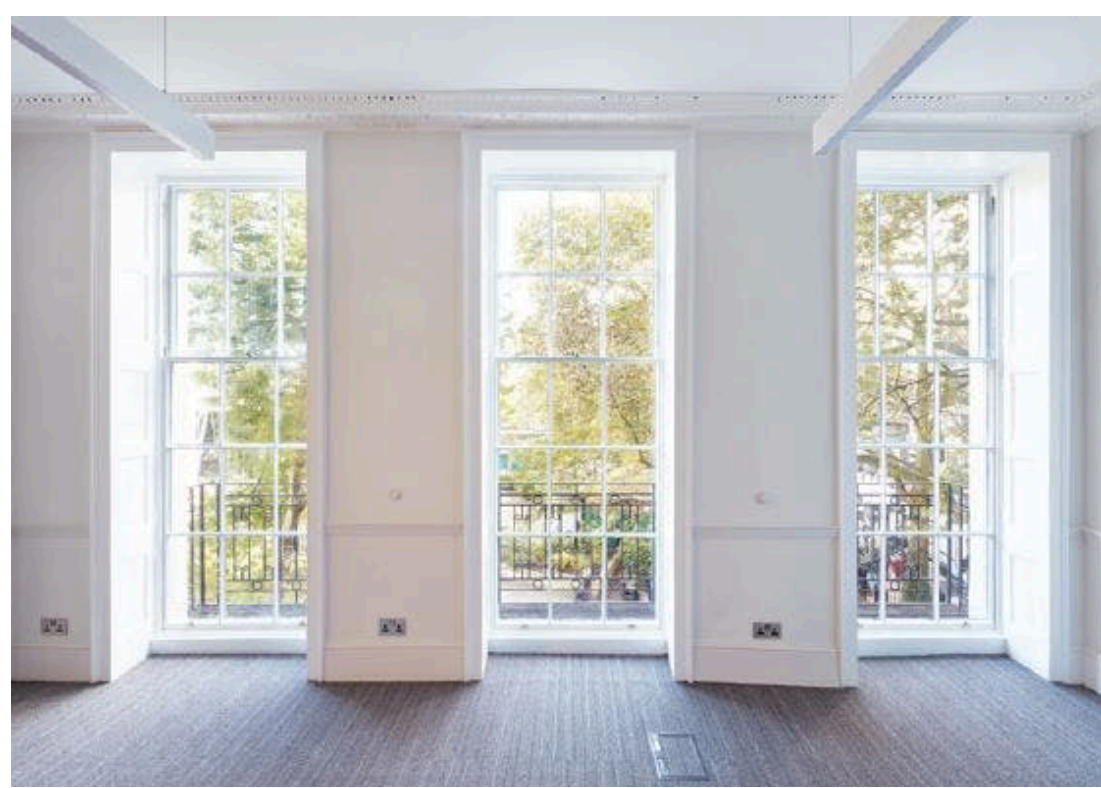
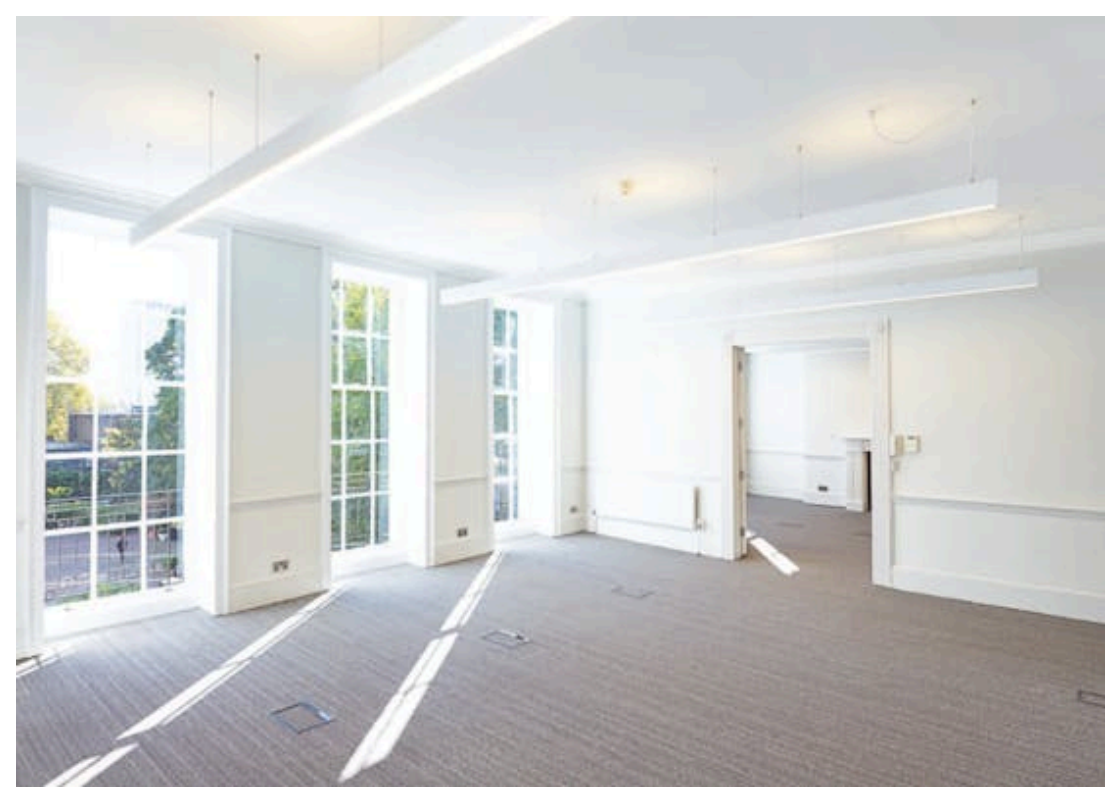


Charing Cross
(0.1 Miles)



Leicester Square
(0.3 Miles)

This prominent period building is located on the west side of Buckingham Street, just south of The Strand and overlooking Victoria Embankment Gardens. Charing Cross station (National Rail, Northern and Bakerloo lines) and Embankment station (Northern, Bakerloo and District and Circle lines) are located close by.



CROSSLAND OTTER HUNT

13-14 Buckingham Street,
London,
WC2N 6DF

Beautiful period offices To Let

381 - 4,424 sq ft

381 to 4,424 sq ft (35.40 to 411 sq
m)

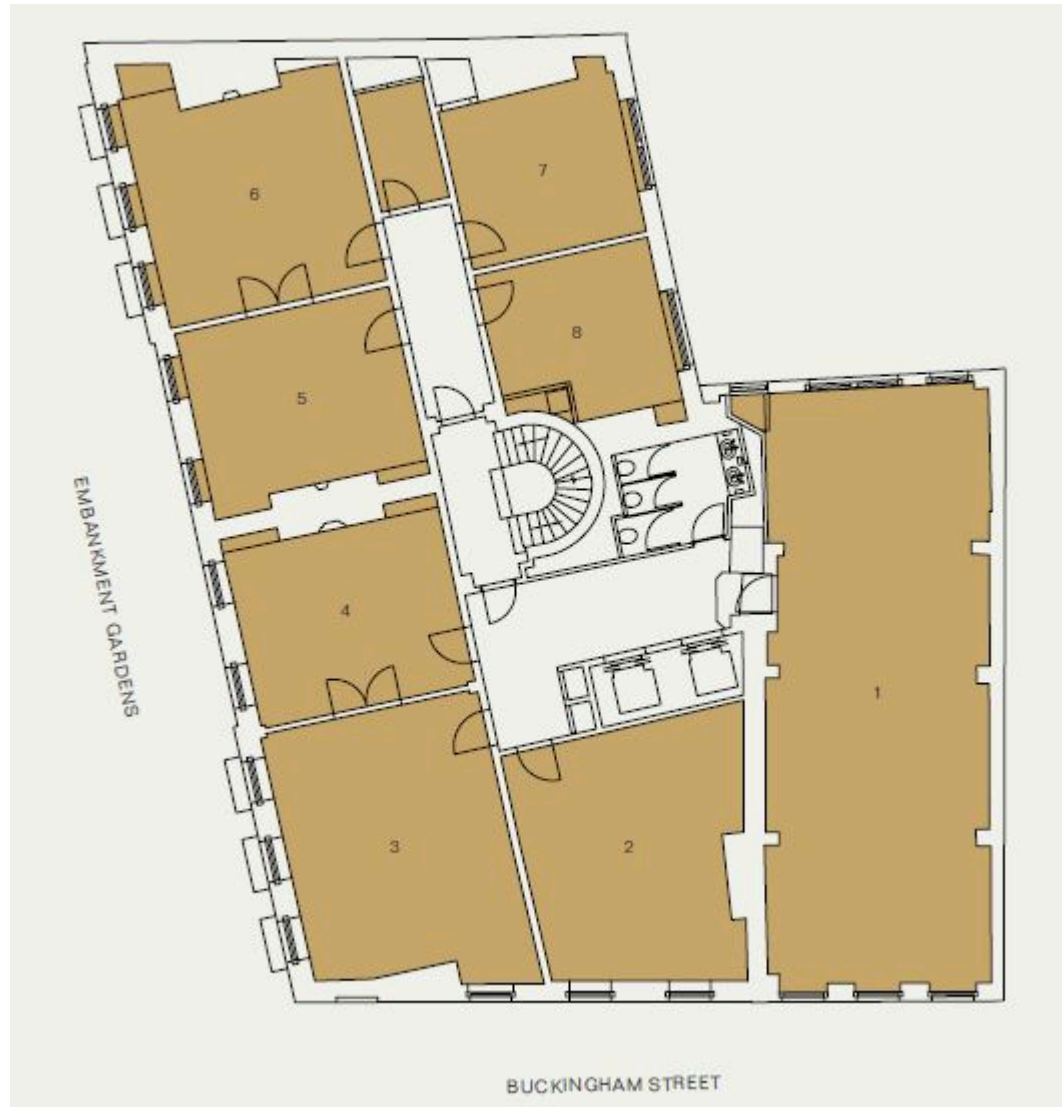
[View Online →](#)

020 7408 1114

www.coh.eu



- Beautiful corner building overlooking the Thames
- Large windows
- Pendant LED lighting
- Entry phone system
- Comfort cooling
- Comfort cooling
- Period features
- CAT VI cabling
- Refurbished WCs



Accommodation

The accommodation comprises of the following

NAME	SQ FT	RENT (SQ FT)	RATES PAYABLE (SQ FT)	SERVICE CHARGE (SQ FT)	TOTAL MONTH	AVAILABILITY
4th - 4.2	2,137	£55	£18.63	£17.50	£16,228.73	Available
3rd - 3.2	381	£42.50	£22.59	£17.50	£2,622.23	Available
Ground - G.1	861	£40	£22.46	£17.50	£5,737.13	Available
2nd - 2.2-4	1,045	£62.50	£21.97	£17.90	£8,914.72	Available
Total	4,424	£50	£21.41	£17.60	£33,502.81	

CROSSLAND OTTER HUNT

CONTACT US



Phil Frenay

02073992742 | 07818566174

phil@coh.eu



Charlotte Steele

020 7408 1114 | 07503625481

charlotte@coh.eu

020 7408 1114

www.coh.eu

Description

This multi - tenanted building is prominently located overlooking Victoria Embankment Gardens and The Thames. The building boasts high ceilings and an abundance of period features

Location

This prominent period building is located on the west side of Buckingham Street, just south of The Strand and overlooking Victoria Embankment Gardens. Charing Cross station (National Rail, Northern and Bakerloo lines) and Embankment station (Northern, Bakerloo and District and Circle lines) are located close by.

Terms

The accommodation is available by way of new, flexible leases

EPC

C

ANTI MONEY LAUNDERING

The successful applicant will be required to provide two forms of ID and proof/source of funds, to satisfy anti-money laundering protocols.

CROSSLAND OTTER HUNT

www.coh.eu



Visit Our Office
3-5 Barrett Street
London
W1U 1AY