



## OVERVIEW

**Parallel Coworking** at **1902 Fox Drive** delivers a modern, flexible workspace solution designed for today's professionals. Offering **all-inclusive gross lease terms** with utilities and high-speed Wi-Fi included, the space features a mix of 31 private offices and six open desk options to accommodate individuals and growing teams. Tenants enjoy access to **fully equipped conference rooms, multiple kitchen and break areas**, and thoughtfully designed **collaboration spaces**, creating a seamless blend of productivity and comfort.

Situated in the heart of the Champaign Corporate Center, the building offers ample parking and walkable access to retail, dining, hotels, and conference facilities. The setting further distinguishes itself with scenic outdoor amenities, including landscaped grounds, seating areas, and access to the Boulware Trail, providing a unique balance of professional environment and natural surroundings.

## AMENITIES

- 1 Gbps high-speed fiber wireless internet
- A/V equipped conference rooms
- Common area kitchens and breakrooms
- Open areas with comfort seating
- Outdoor seating area and bike storage
- Reception seating
- Interior and exterior signage opportunities

# PARALLEL OFFICE FOR LEASE

TURNKEY

SEATS TEAMS OF 4-8

1902 FOX DRIVE  
SUITE 24



## SUITE 24 – OVERVIEW

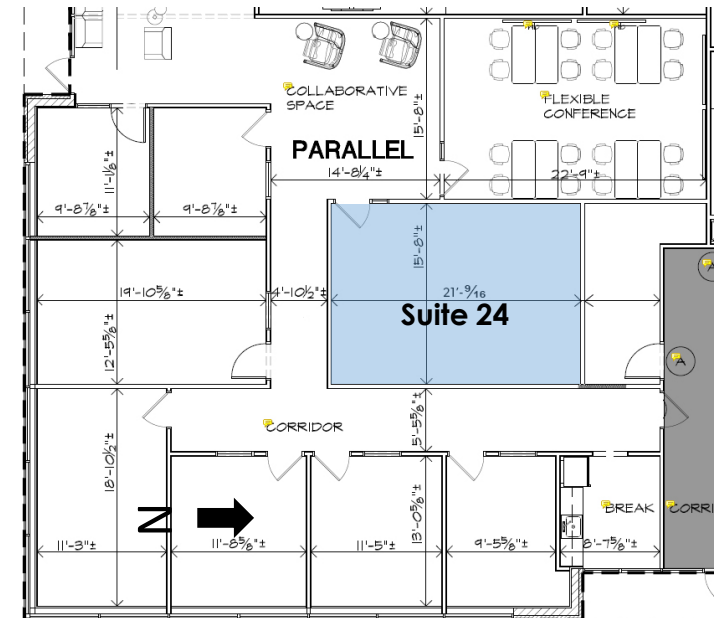
Located within the **Parallel coworking** space, Suite 24 at 1902 Fox Drive in the Champaign Corporate Center offers a **turnkey private office with space for teams of 4-8 individuals**. The space provides an immediate solution for **small office users** seeking a professional setting with **flexible lease terms**.

Parallel Tenants benefit from access to shared conference rooms, multiple kitchen and break areas with coffee service, and comfortable common seating, creating a collaborative yet private work experience. The office is within walking distance to Harvest Market grocery, restaurants, retail, and the Boulware Trail, while also providing convenient access to the University of Illinois, Memorial Stadium, and nearby conference centers.

<b>BUILDING SIZE</b>	17,915 RSF
<b>SUITE SIZE</b>	325 USF
<b>LEASE TYPE</b>	Gross (includes utilities & Wi-Fi)
<b>RENTAL RATE</b>	\$1,000 / Month

## SUITE FEATURES

- 1 Gbps high-speed fiber wireless internet
- Landlord provided furniture options available including desk, chair, and mobile file cabinet
- Access to three conference rooms and multiple lounge areas for meetings and collaboration
- Ample on-site parking
- All-inclusive gross rent includes the cost of utilities, Wi-Fi, and common area expenses
- Three shared kitchens with complimentary coffee service
- Contemporary finishes in a professional, well-maintained environment



# BROKERAGE CONTACT INFORMATION



**Dana Flinn-Freeland**  
Executive Broker Associate  
**CBCDR**

Illinois Licensed Real Estate  
Managing Broker

**C: 630.544.7952**

**O: 217.318.3496**

**[dana@cbcdr.com](mailto:dana@cbcdr.com)**



**AJ Thoma III, CCIM, SIOR**  
Executive Vice President  
**CBCDR**

Illinois Licensed Real Estate Broker

**C: 217.520.3299**

**O: 217.403.3425**

**[ajt@cbcdr.com](mailto:ajt@cbcdr.com)**

