

Medical Office | For Lease

CBRE

Medical Arts Center III

17450 St. Luke's Way
The Woodlands, TX 77384
www.cbre.com/properties

Move-In Ready Suites Available



Building owned by **HEALTHCARE REALTY**

Property Highlights

Medical Arts Center III, located at 17450 St. Luke's Way in The Woodlands, is a 96,853 RSF, 4-story, Class A, Medical Office Building.

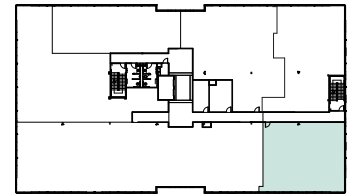
- Located on the CHI St. Luke's Health - The Woodlands Medical Campus
- Abundant free surface and garage parking for visitors
- Great tenant mix and excellent patient demographics
- Easy access to I-45 and close proximity to Houston Methodist The Woodland's Hospital, Memorial Hermann The Woodlands Hospital, and Texas Children's Hospital The Woodlands
- All suites are 2nd generation medical space
- Top, full floor available



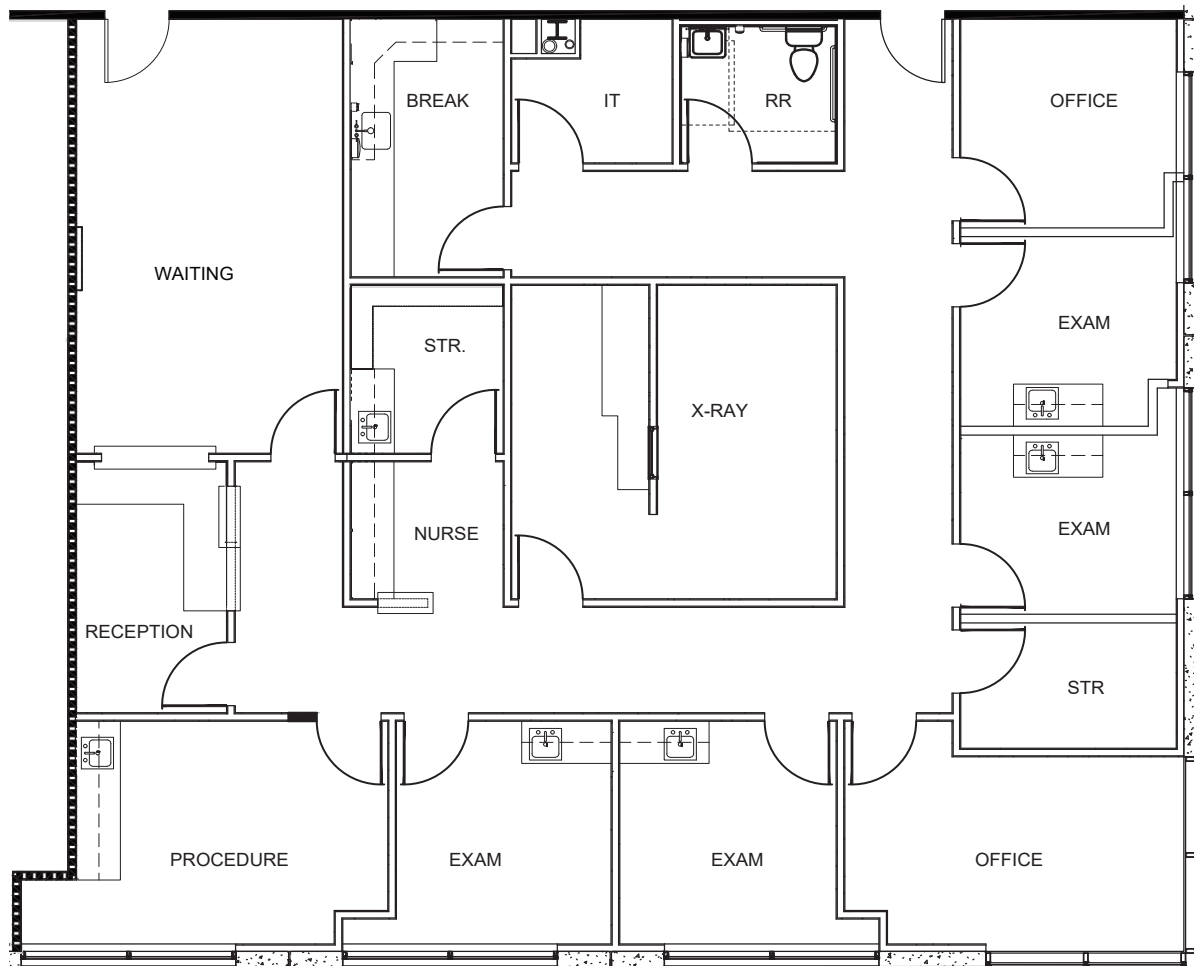
DEMOGRAPHICS	1 MILE	3 MILES	5 MILES
Population - Estimated 2024	4,799	49,490	135,712
Population - 5-Year Projection	4,821	49,593	137,814
Median Age - Estimated 2024	45.7	39.2	40.7
Average Household Income - Estimated 2024	\$131,972	\$161,441	\$160,625

SUITE 340 - 2,653 RSF

SPEC SUITE



3rd Floor



MEDICAL ARTS CENTER III

17450 St. Luke's Way | The Woodlands, TX 77384

For Lease



Contact Us

Brandy Bellow Spinks

Executive Vice President
+1 713 726 6100
brandy.bellow@cbre.com

Pamela Sprouse

Vice President
+1 832 335 0277
pamela.sprouse@cbre.com

Building owned by
HEALTHCARE REALTY



© 2026 CBRE, Inc. All rights reserved. This information has been obtained from sources believed reliable, but has not been verified for accuracy or completeness. You should conduct a careful, independent investigation of the property and verify all information. Any reliance on this information is solely at your own risk. CBRE and the CBRE logo are service marks of CBRE, Inc. All other marks displayed on this document are the property of their respective owners, and the use of such logos does not imply any affiliation with or endorsement of CBRE. Photos herein are the property of their respective owners. Use of these images without the express written consent of the owner is prohibited.

www.cbre.com/properties

CBRE