

FOR SALE

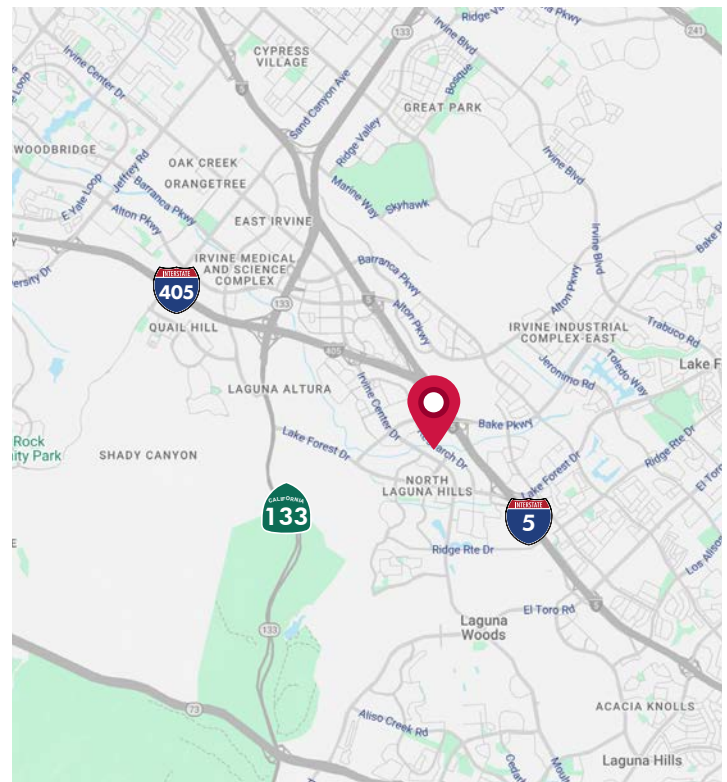
9640 RESEARCH DRIVE, IRVINE

±2,158 SF SINGLE-STORY OFFICE CONDO



PROPERTY FEATURES

- ±2,158 SF Single-Story Office Condo
- Open Floorplan Concept
- ±1,500 SF Climate Controlled Storage Space – Previously Used for Private Wine Storage
- 3:1 Parking Ratio
- 5.4A Zoning (Design Professional)
- Year Built: 2007
- HOA Fee: \$467/Month
- **Asking Price: \$1,294,800 (\$600 PSF)**



DALE CAMERA
Senior Vice President
License ID# 01313921
949.790.3132
dcamera@leeirvine.com

JASON HELMICK
Senior Vice President
License ID# 01786729
949.790.3119
jhelmick@leeirvine.com

ZACH SCHWANER
Senior Vice President
License ID# 02009623
949.790.3159
zschwanner@leeirvine.com

DYLAN DAVEY
Associate
License ID# 02219560
949.790.3162
ddavey@leeirvine.com

 **LEE & ASSOCIATES**
COMMERCIAL REAL ESTATE SERVICES

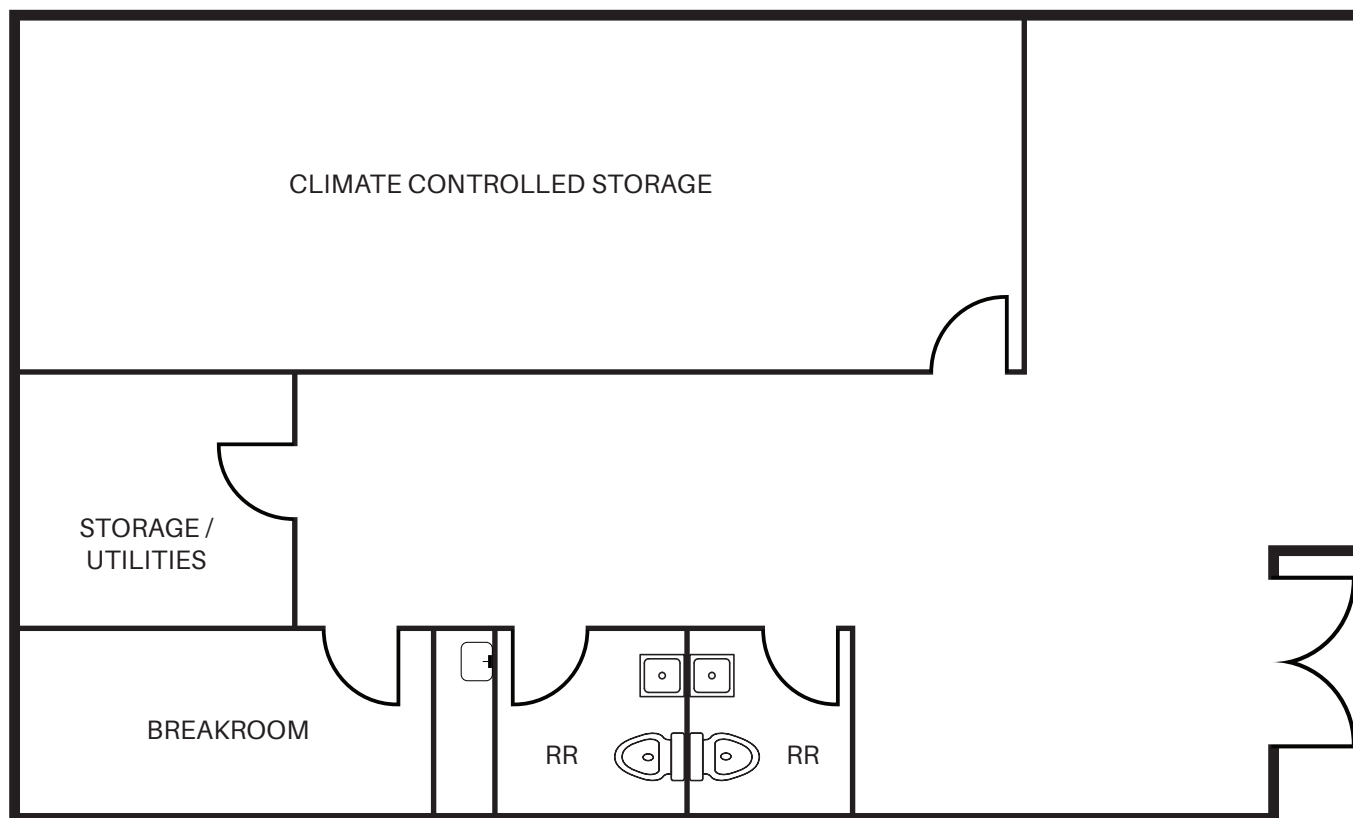
ORANGE COUNTY INDUSTRIAL

FOR SALE

9640 RESEARCH DR, IRVINE

±2,158 SF SINGLE-STORY OFFICE CONDO

FLOOR PLAN



DALE CAMERA
Senior Vice President
License ID# 01313921
949.790.3132
dcamera@leeirvine.com

JASON HELMICK
Senior Vice President
License ID# 01786729
949.790.3119
jhelmick@leeirvine.com

ZACH SCHWANER
Senior Vice President
License ID# 02009623
949.790.3159
zschwaner@leeirvine.com

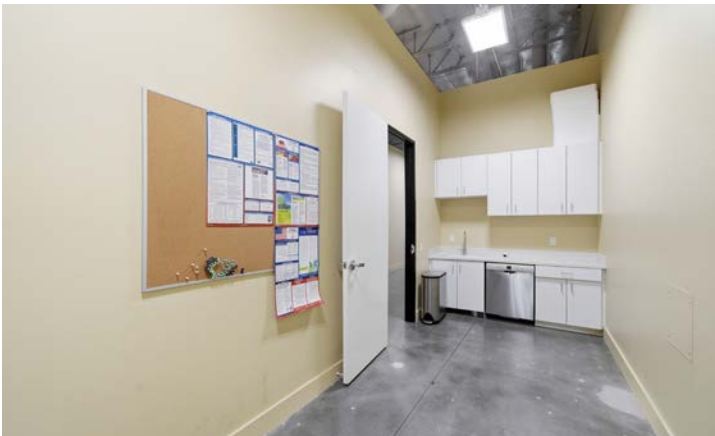
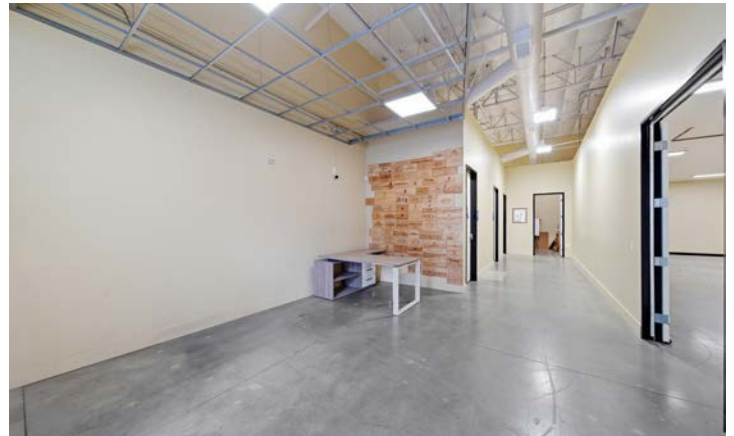
DYLAN DAVEY
Associate
License ID# 02219560
949.790.3162
ddavey@leeirvine.com



FOR SALE

9640 RESEARCH DR, IRVINE

±2,158 SF SINGLE-STORY OFFICE CONDO



DALE CAMERA
Senior Vice President
License ID# 01313921
949.790.3132
dcamera@leeirvine.com

JASON HELMICK
Senior Vice President
License ID# 01786729
949.790.3119
jhelmick@leeirvine.com

ZACH SCHWANER
Senior Vice President
License ID# 02009623
949.790.3159
zschwanner@leeirvine.com

DYLAN DAVEY
Associate
License ID# 02219560
949.790.3162
ddavey@leeirvine.com

LEE & ASSOCIATES
COMMERCIAL REAL ESTATE SERVICES

ORANGE COUNTY INDUSTRIAL