

# SOUTH ELM INDUSTRIAL CENTER



Creek Ridge Road | Greensboro, NC

**Available For Lease ±1,815 - 31,482 RSF**

Jason Ofsanko  
Executive Director  
+1 336 812 3300  
Jason.Ofsanko@cushwake.com

Jordan Mitchell  
Managing Director  
+1 336 201 0495  
Jordan.Mitchell@cushwake.com



# SITE PLAN

LEASED

AVAILABLE



# 101 Creek Ridge Road

**±15,741 - ±31,482 TOTAL SF AVAILABLE**


**±28,988 SF WAREHOUSE SPACE**

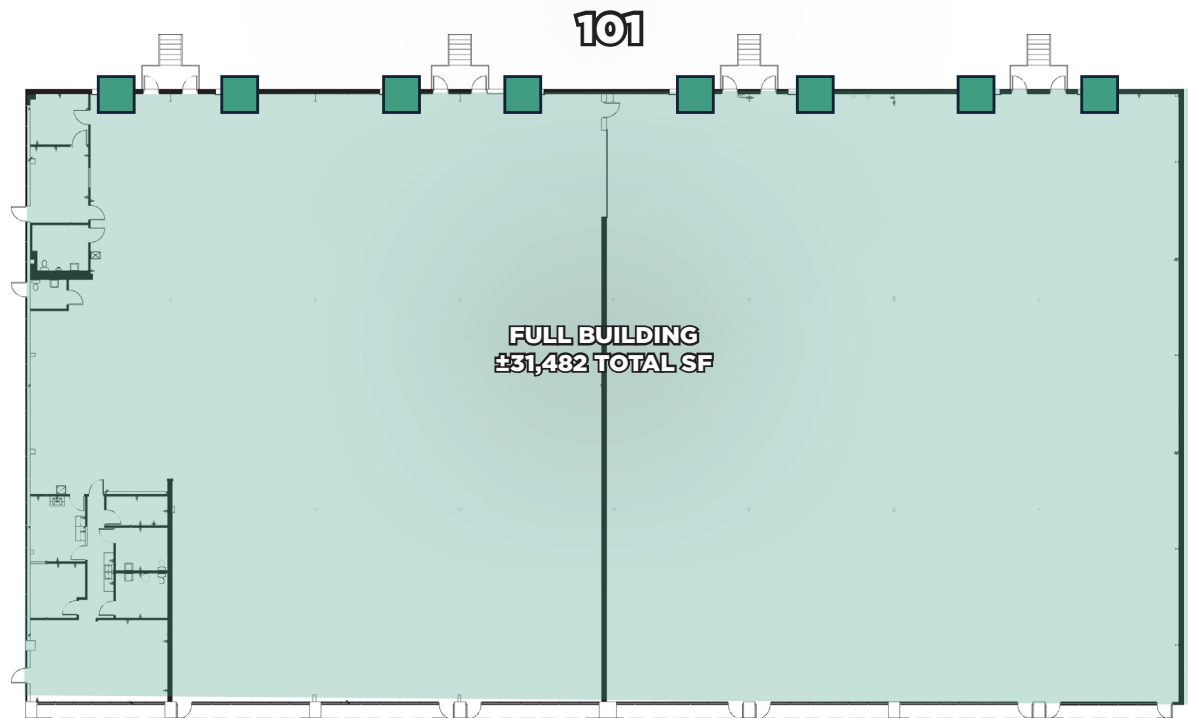
**±1,686 - ±1,989 SF OFFICE**

**18' CLEAR HEIGHT**

**8 DOCK HIGH DOORS**

**SPACE CAN BE DEMISED**

 = dock high doors



# 103-C Creek Ridge Road

**± 3,000 TOTAL SF AVAILABLE**

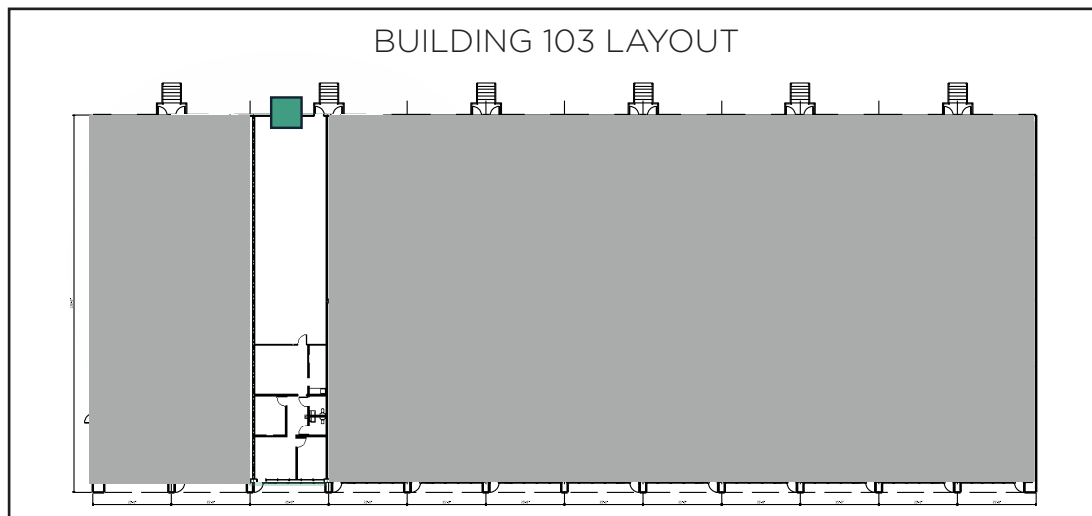
**±2,600 SF WAREHOUSE SPACE**

**±400 SF OFFICE SPACE**

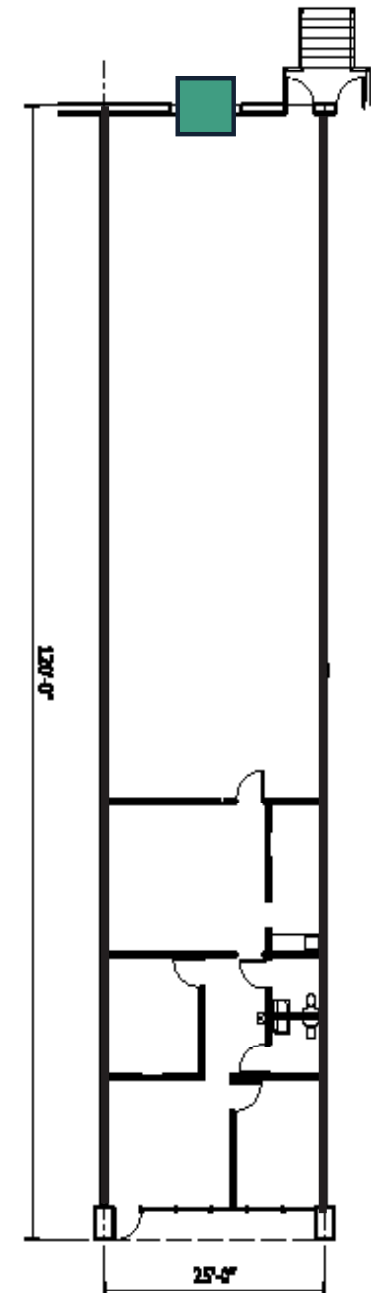
**18' CLEAR HEIGHT**

**1 DOCK HIGH DOOR**

**FRONT PARK, REAR LOAD**



■ = dock high door



# 103-D Creek Ridge Road

**± 3,000 TOTAL SF AVAILABLE**

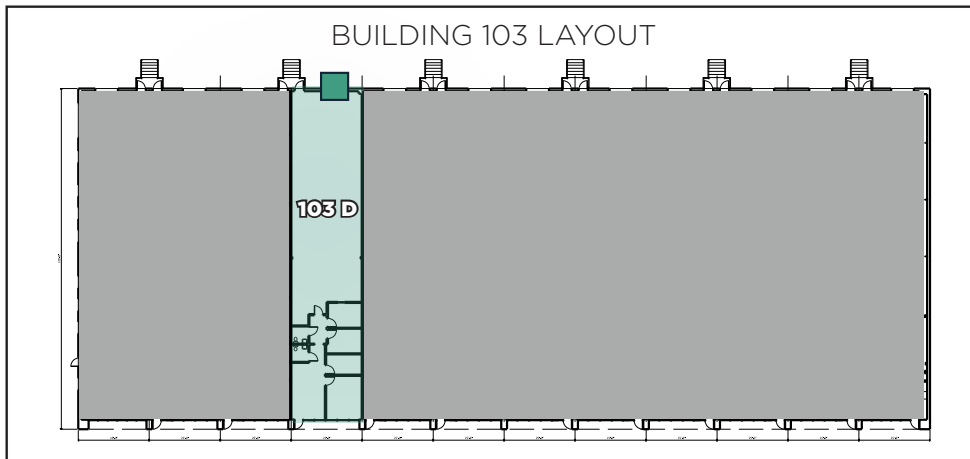
**±1,956 SF WAREHOUSE SPACE**

**±1,044 SF OFFICE SPACE**

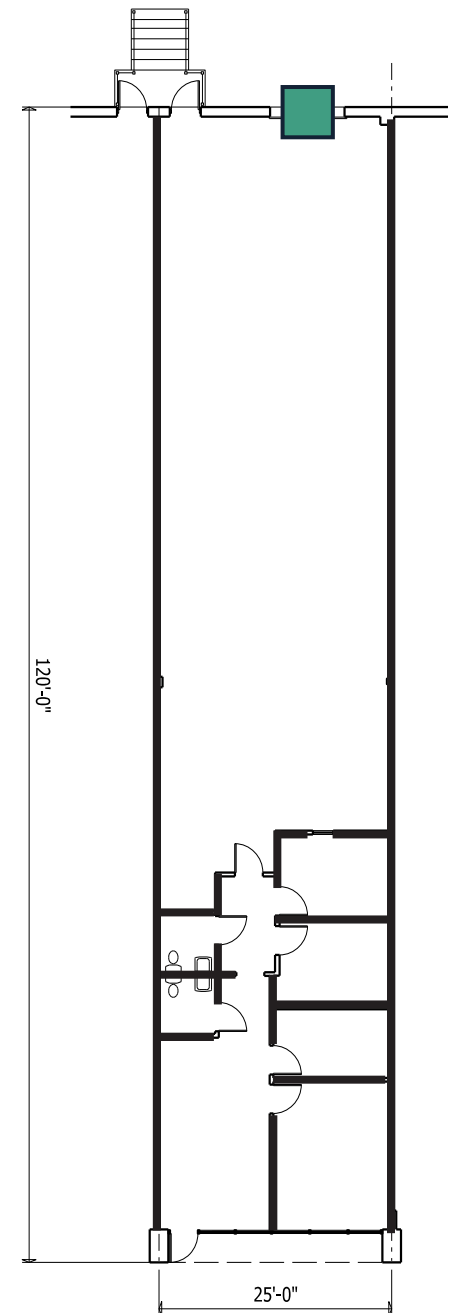
**18' CLEAR HEIGHT**

**1 DOCK HIGH DOOR**

**FRONT PARK, REAR LOAD**



■ = dock high door



# 103-E Creek Ridge Road

**± 3,000 TOTAL SF AVAILABLE**

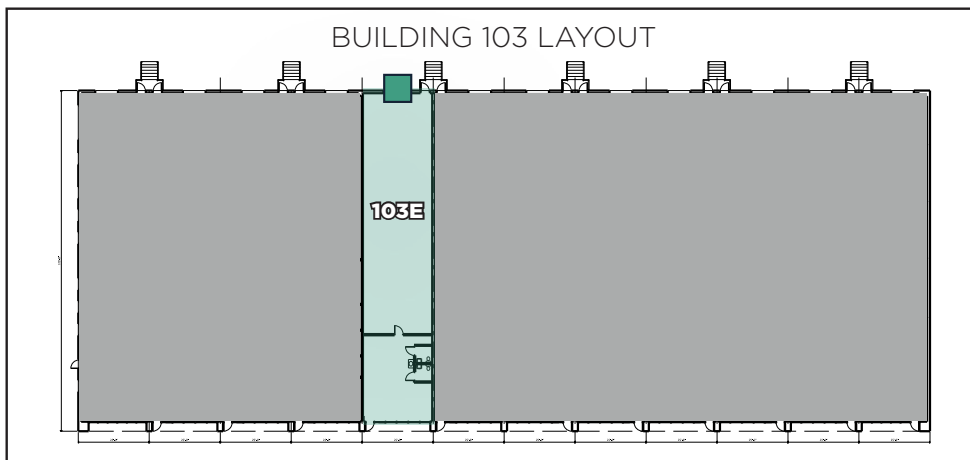
**±2,146 SF WAREHOUSE SPACE**

**±854 SF OFFICE SPACE**

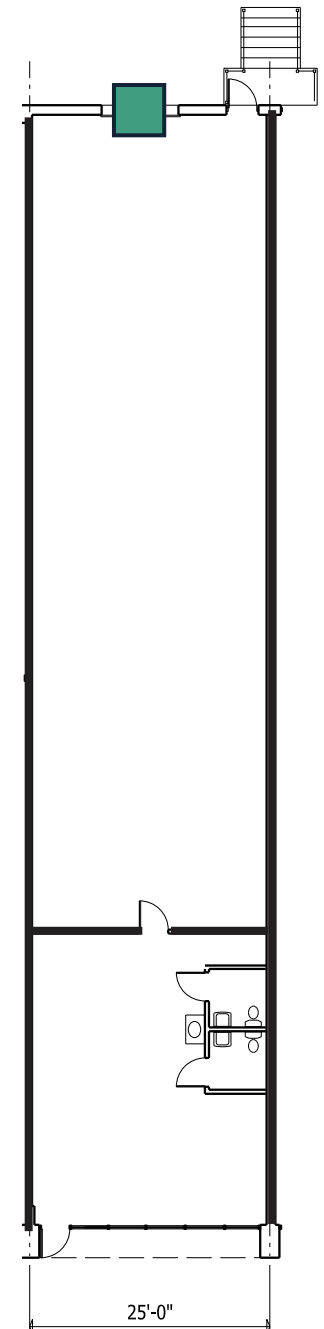
**18' CLEAR HEIGHT**

**1 DOCK HIGH DOOR**

**FRONT PARK, REAR LOAD**



 = dock high door



# 107-J Creek Ridge Road

**± 1,815 TOTAL SF AVAILABLE**

**±1,282 SF WAREHOUSE SPACE**

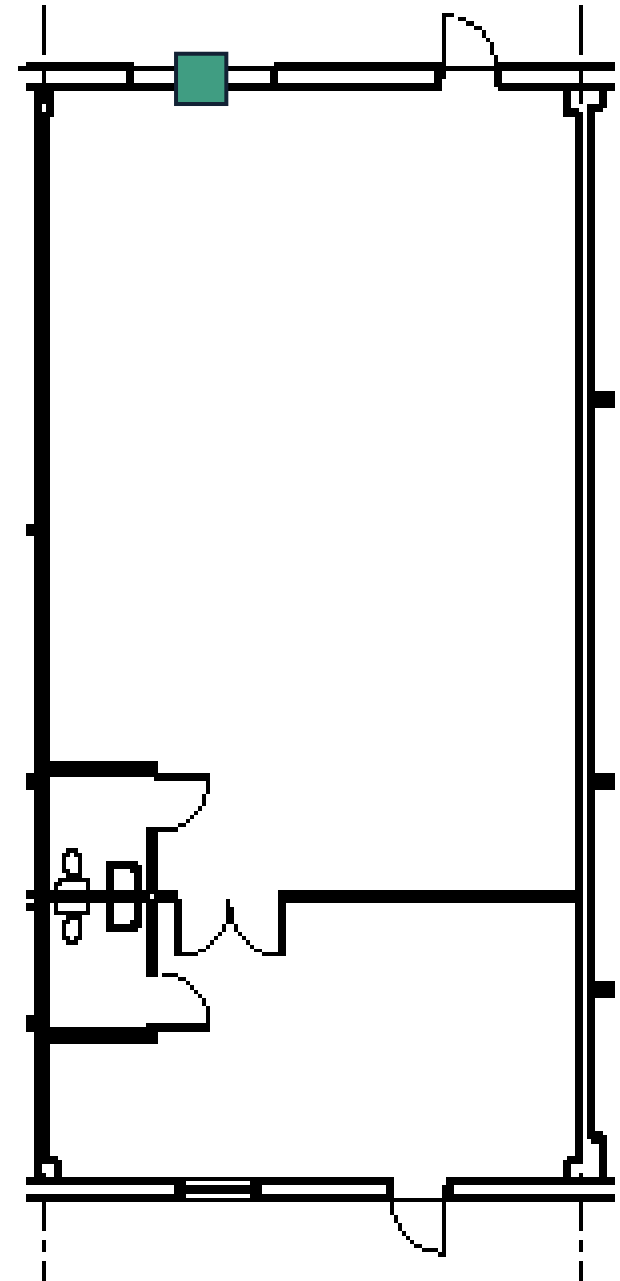
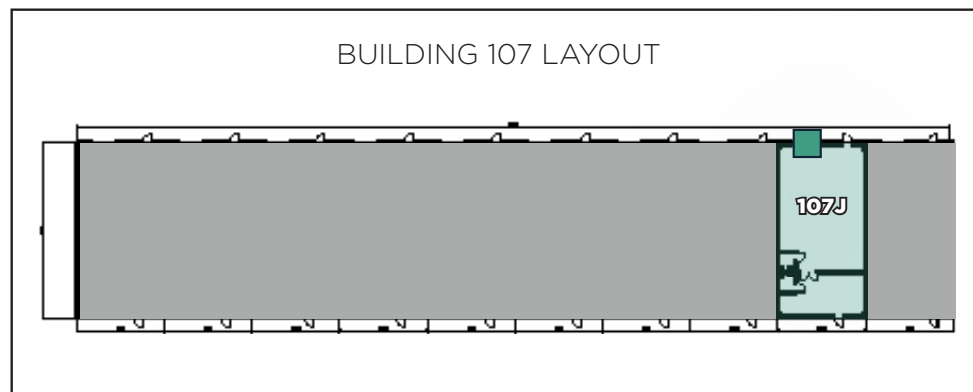
**±533 SF OFFICE SPACE**

**18' CLEAR HEIGHT**

**1 DOCK HIGH DOOR**

**FRONT PARK, REAR LOAD**

 = dock high door



# 111-DE Creek Ridge

**±4,800 - ±8,400 TOTAL SF AVAILABLE**

**±7,364 SF WAREHOUSE SPACE**

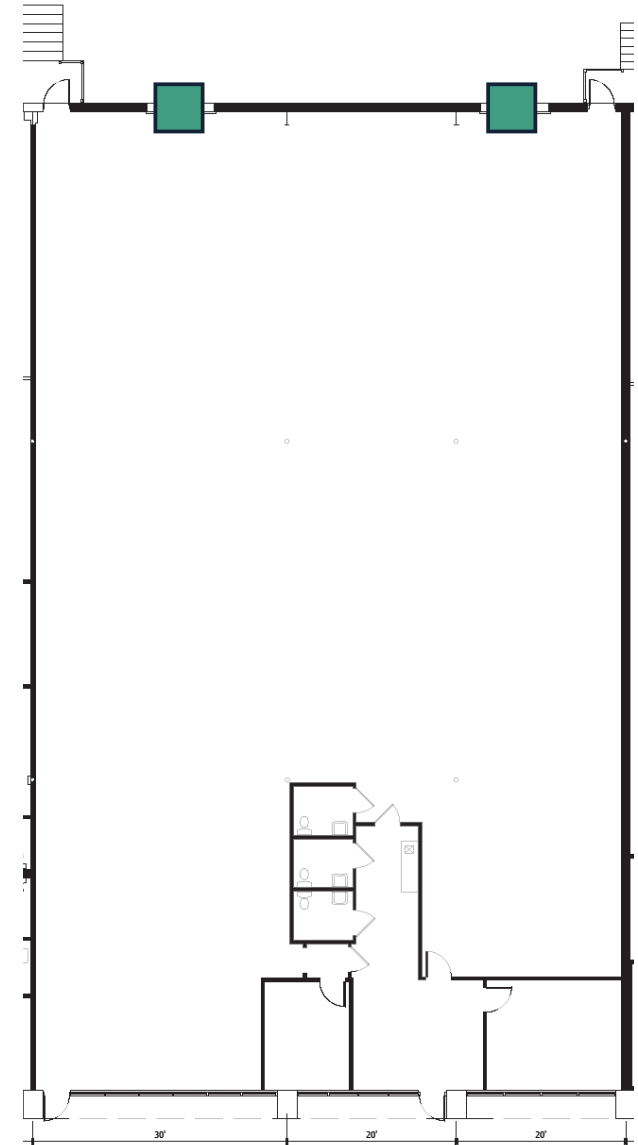
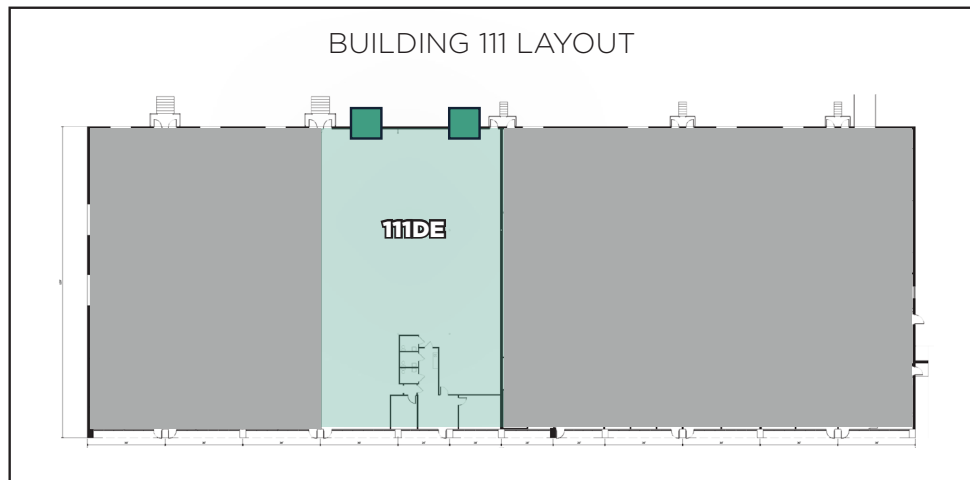
**±1,046 SF OFFICE SPACE**

**16' CLEAR HEIGHT**

**2 DOCK HIGH DOORS**

**FRONT PARK, REAR LOAD**

 = dock high door



# 111-FG Creek Ridge Road

**± 8,400 TOTAL SF AVAILABLE**

**±6,233 SF WAREHOUSE SPACE**

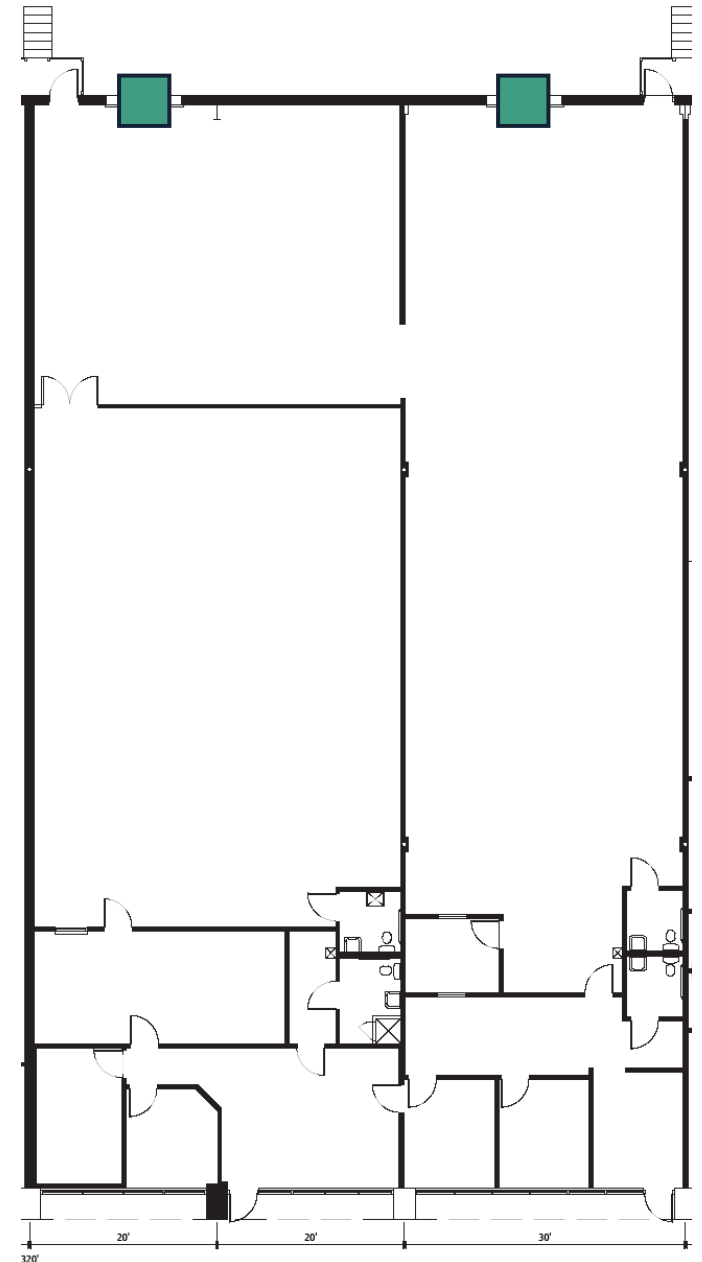
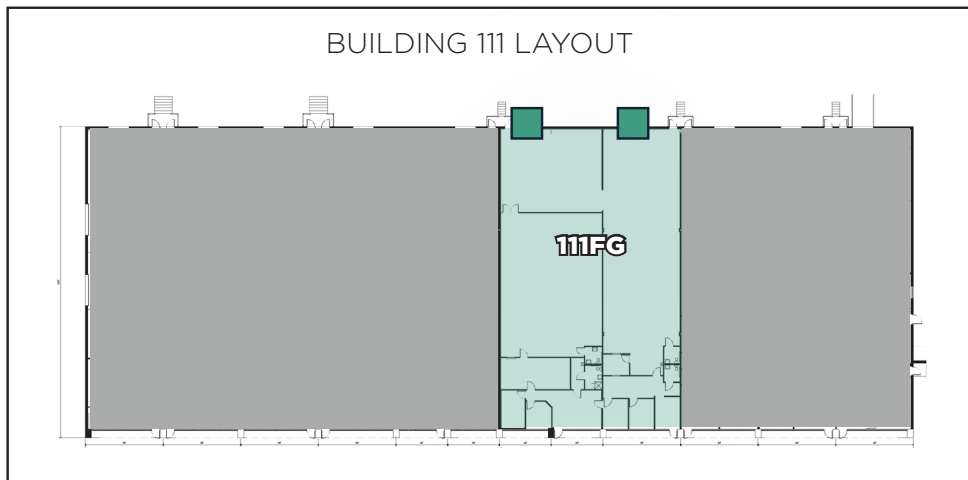
**±2,167 SF OFFICE SPACE**

**16' CLEAR HEIGHT**

**2 DOCK HIGH DOORS**

**FRONT PARK, REAR LOAD**

 = dock high door



# 201-F Creek Ridge Road

**± 5,705 TOTAL SF AVAILABLE**

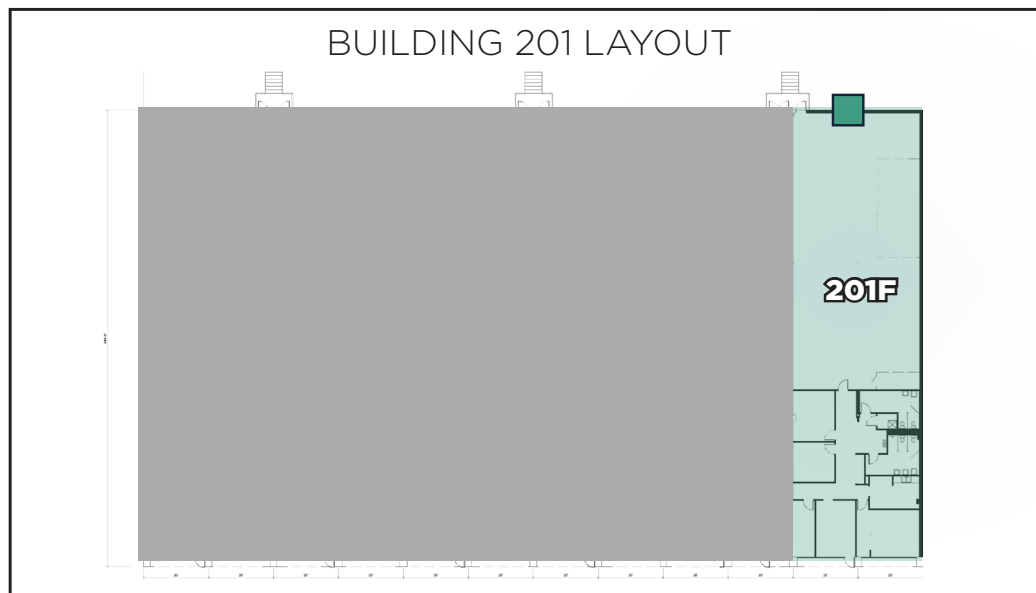
**±3,439 SF WAREHOUSE SPACE**

**±2,266 SF OFFICE SPACE**

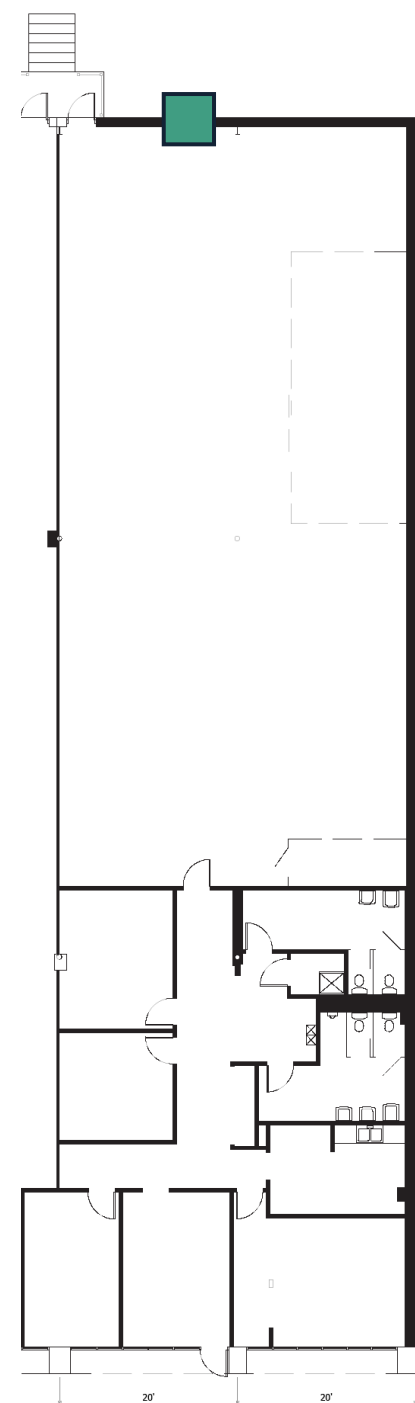
**20' CLEAR HEIGHT**

**1 DOCK HIGH DOOR**

**FRONT PARK, REAR LOAD**



 = dock high door



# 205-JK Creek Ridge Road

**± 5,993 TOTAL SF AVAILABLE**

**±4,761 SF WAREHOUSE SPACE**

**±1,231 SF OFFICE SPACE**

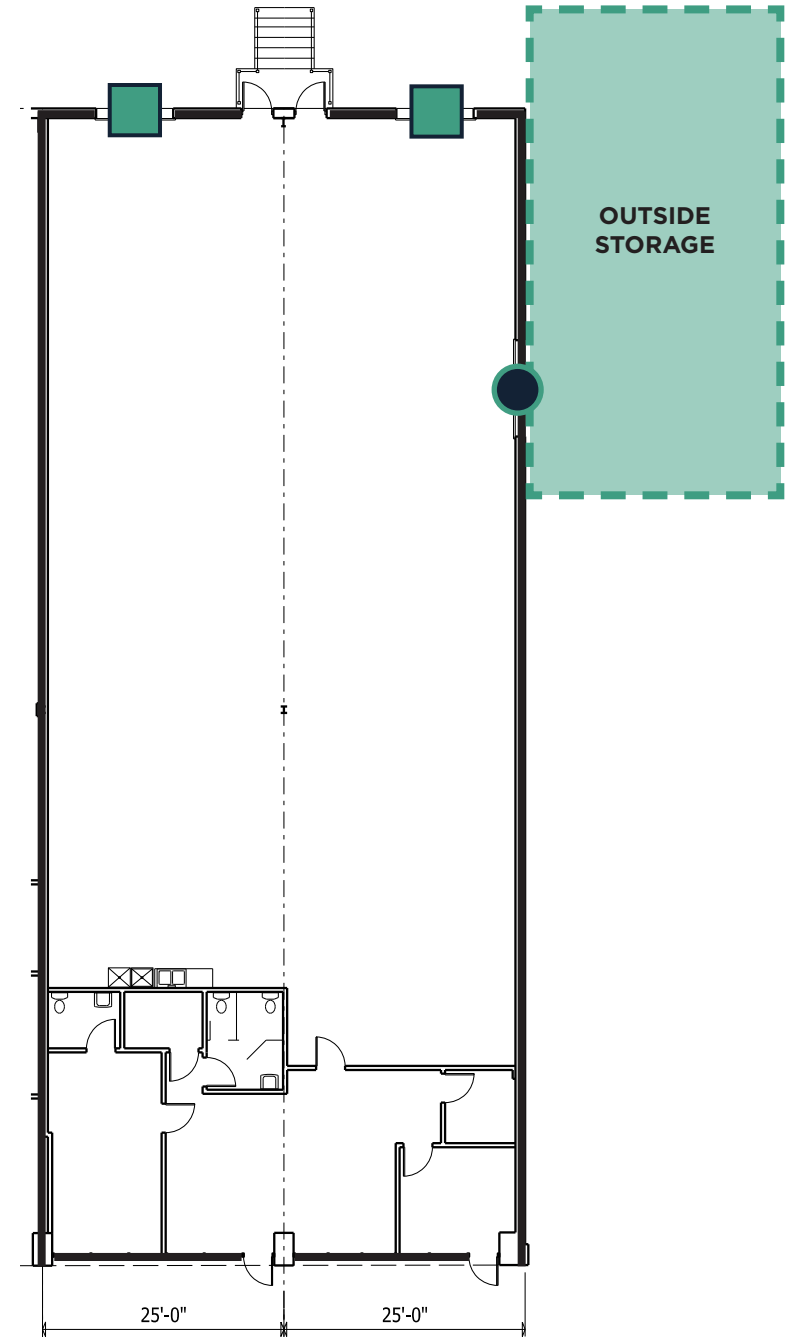
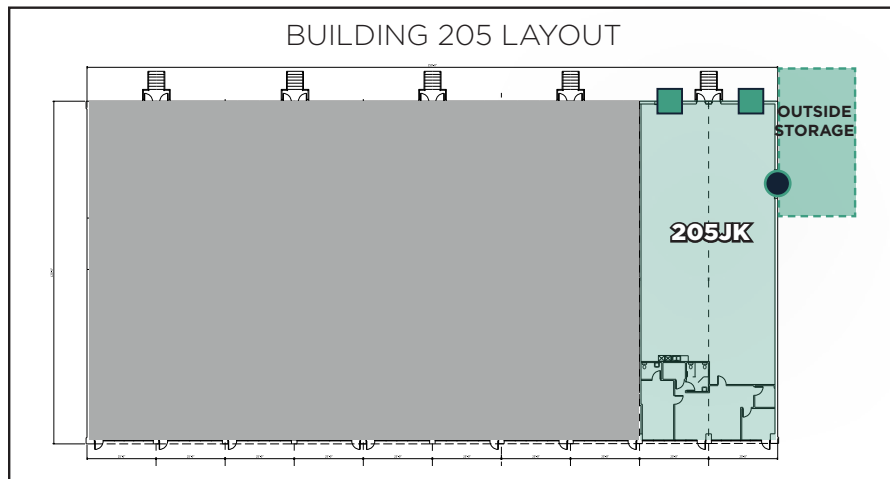
**18' CLEAR HEIGHT**

**2 DOCK HIGH DOORS**

**1 DRIVE-IN DOOR**

**FRONT PARK, REAR LOAD**

■ = dock high doors  
● = drive-in door



# 209-BC Creek Ridge Road

**± 11,200 TOTAL SF AVAILABLE**

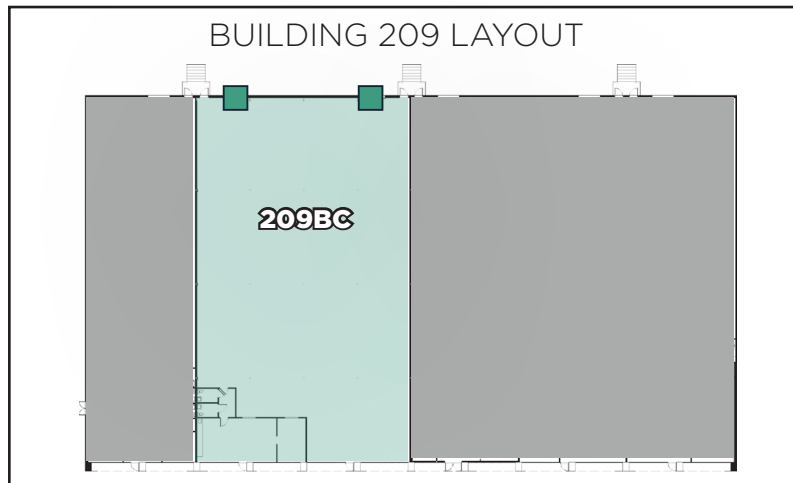
**±10,209 SF WAREHOUSE SPACE**


**±991 SF OFFICE SPACE**

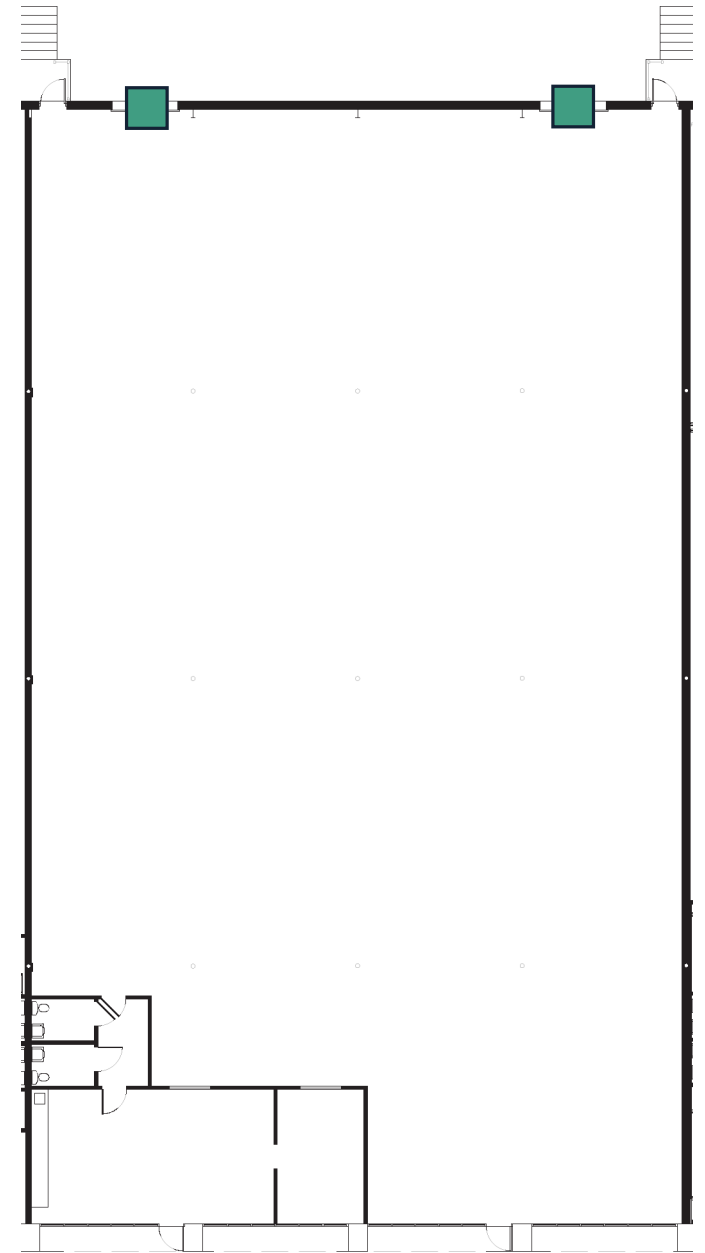
**20' CLEAR HEIGHT**

**2 DOCK HIGH DOORS**

**FRONT PARK, REAR LOAD**



 = dock high doors



# 209-DE Creek Ridge Road

**± 11,200 TOTAL SF AVAILABLE**

**±9,520 SF WAREHOUSE SPACE**

**±1,680 SF OFFICE SPACE**

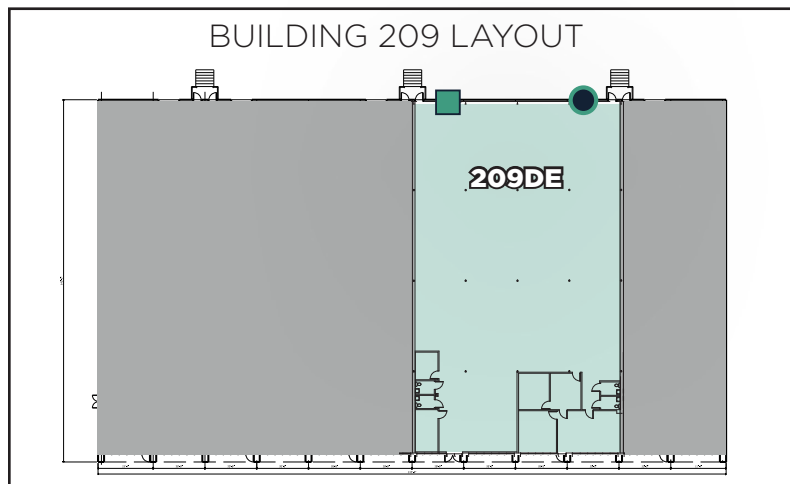
**20' CLEAR HEIGHT**



**1 DOCK HIGH DOOR**

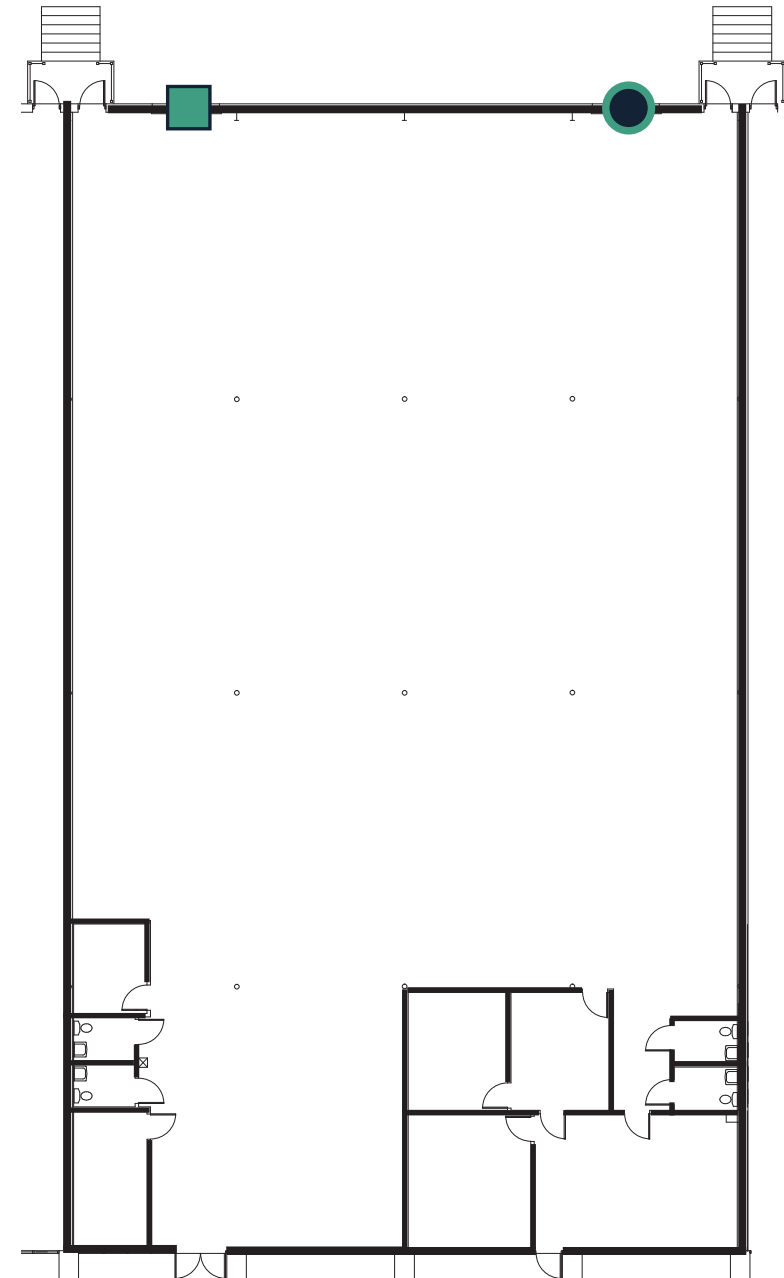
**1 DRIVE-IN DOOR**

**FRONT PARK, REAR LOAD**

**FULLY CONDITIONED**



-  = dock high door
-  = drive-in door



# 209-F Creek Ridge Road

**± 5,786 TOTAL SF AVAILABLE**

**±5,409 SF WAREHOUSE SPACE**

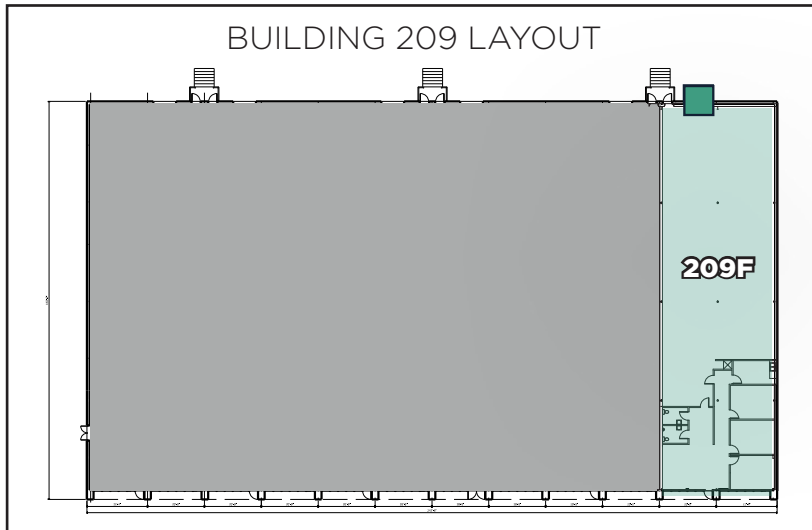
**±377 SF OFFICE SPACE**

**20' CLEAR HEIGHT**

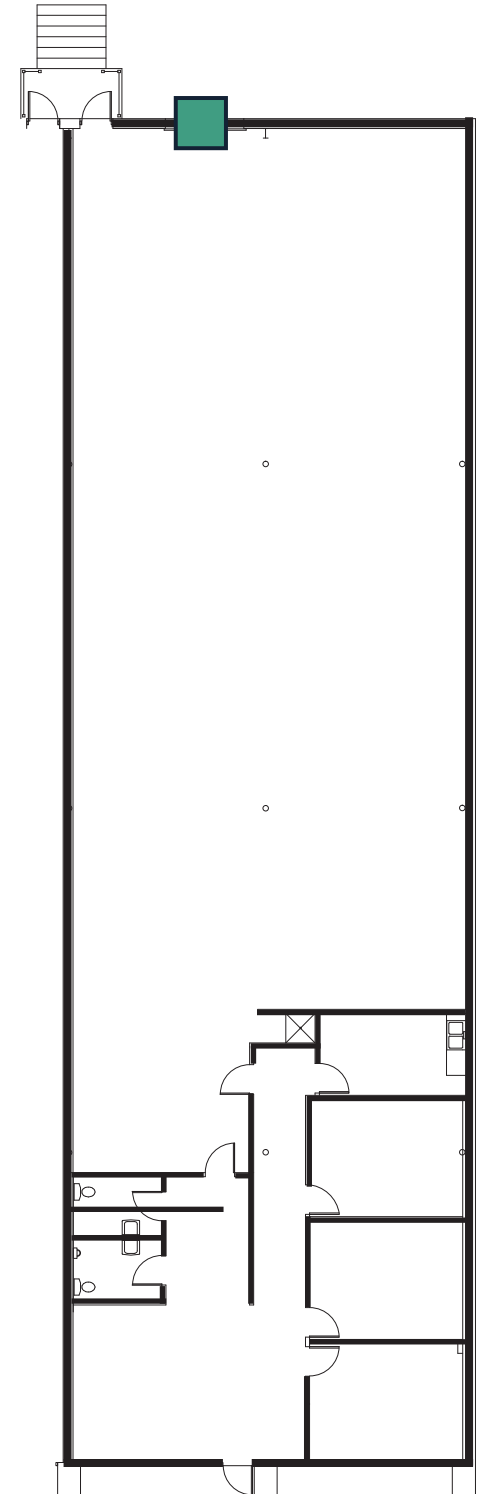
**1 DOCK HIGH DOOR**

**FRONT PARK, REAR LOAD**

**FULLY CONDITIONED**



 = dock high door



# 211 Creek Ridge Road

**± 9,976 TOTAL SF AVAILABLE**

**±6,332 SF WAREHOUSE SPACE**

**±3,644 SF OFFICE SPACE**

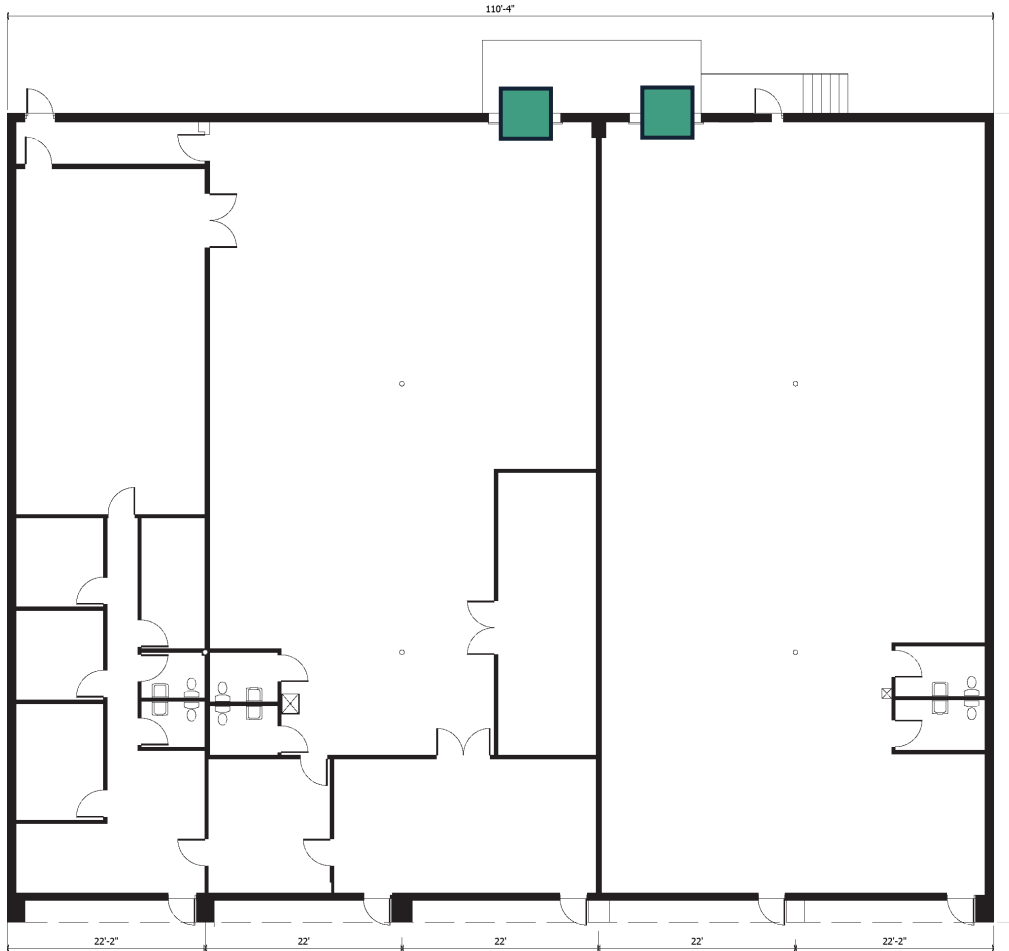
**18' CLEAR HEIGHT**

**2 DOCK HIGH DOORS**

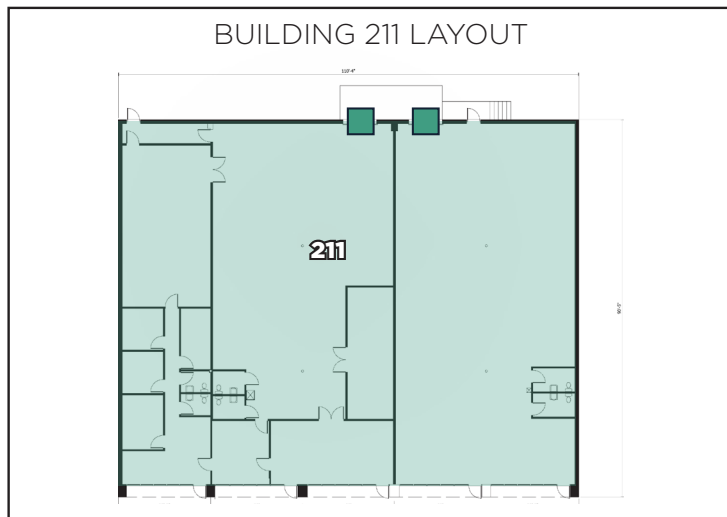
DRIVE-IN DOORS OPTION AVAILABLE

FRONT PARK, REAR LOAD

POTENTIAL FOR OUTSIDE STORAGE YARD



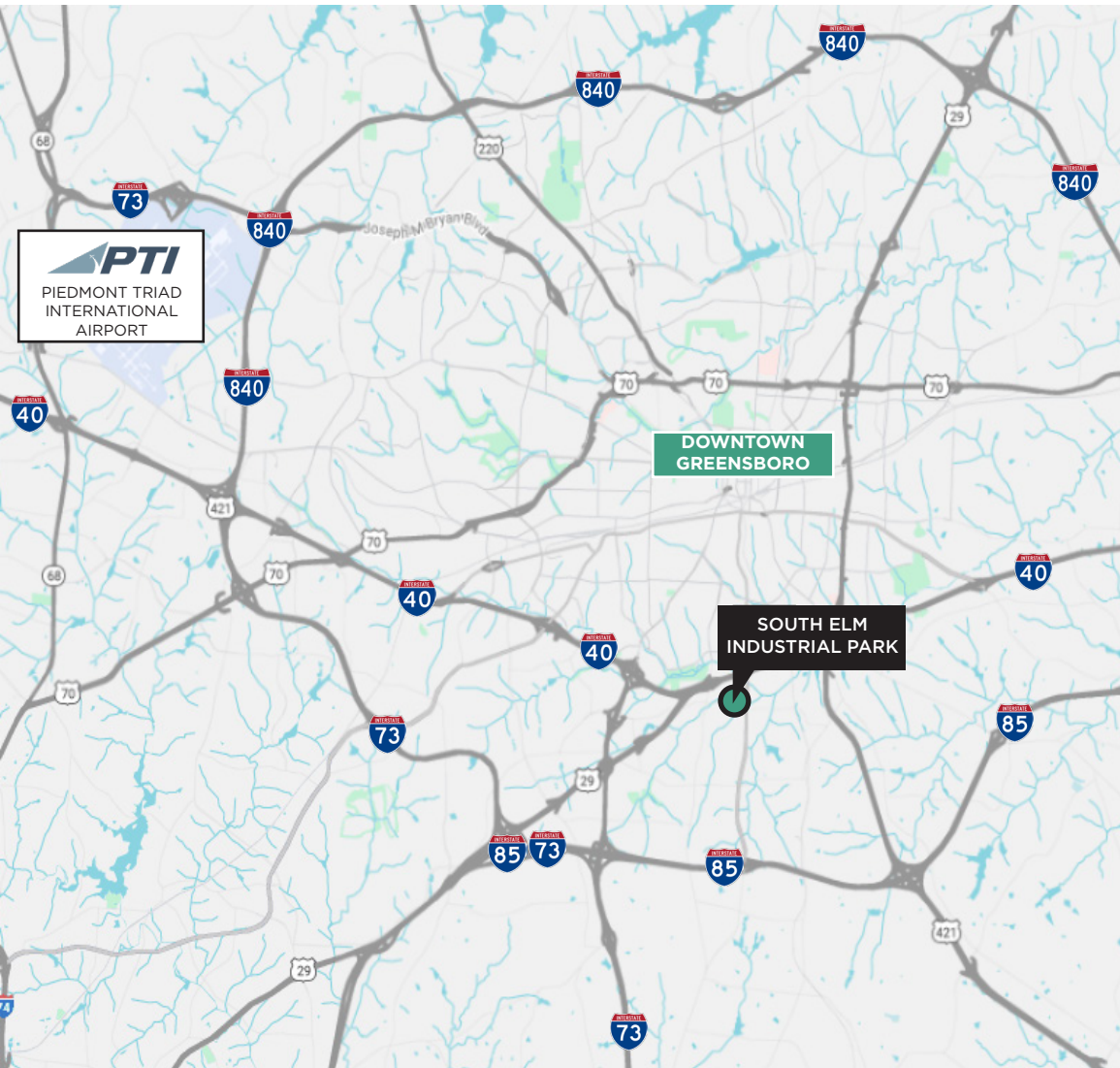
■ = dock high doors



# CORPORATE NEIGHBORS



# DRIVE TIMES



I-40  
2 min / 0.6 miles

---

I-73  
8 min / 4.2 miles

---

I-85  
8 min / 4.0 miles

---

I-840  
9 min / 7.0 miles

---

PIEDMONT TRIAD INT'L AIRPORT  
17 min / 14.9 miles

---

DOWNTOWN GREENSBORO  
10 min / 3.6 miles

# SOUTH ELM INDUSTRIAL CENTER



For More Information, Please Contact:

**Jason Ofsanko**

Executive Director

+1 336 812 3300

[Jason.Ofsanko@cushwake.com](mailto:Jason.Ofsanko@cushwake.com)

**Jordan Mitchell**

Managing Director

+1 336 201 0495

[Jordan.Mitchell@cushwake.com](mailto:Jordan.Mitchell@cushwake.com)



©2026 Cushman & Wakefield. All rights reserved. The information contained in this communication is strictly confidential. This information has been obtained from sources believed to be reliable but has not been verified. NO WARRANTY OR REPRESENTATION, EXPRESS OR IMPLIED, IS MADE AS TO THE CONDITION OF THE PROPERTY (OR PROPERTIES) REFERENCED HEREIN OR AS TO THE ACCURACY OR COMPLETENESS OF THE INFORMATION CONTAINED HEREIN, AND SAME IS SUBMITTED SUBJECT TO ERRORS, OMISSIONS, CHANGE OF PRICE, RENTAL OR OTHER CONDITIONS, WITHDRAWAL WITHOUT NOTICE, AND TO ANY SPECIAL LISTING CONDITIONS IMPOSED BY THE PROPERTY OWNER(S). ANY PROJECTIONS, OPINIONS OR ESTIMATES ARE SUBJECT TO UNCERTAINTY AND DO NOT SIGNIFY CURRENT OR FUTURE PROPERTY PERFORMANCE.