



Office / Flex / Industrial Available For Lease

6701 - 6785 Sierra Court & 6681 - 6693 Sierra Lane, Dublin, CA

Professionally Managed By:



Exclusively Represented By:





Property Features



Immediate Access to I-580 & I-680
via Hopyard / Dougherty Road



Suites Ranging From
1,350 SF to 15,000 SF



3.54/1,000 SF Parking Ratio



Office / Flex / Light Industrial Units



15' - 18' Clear Height



Close Proximity to
Retail & Hotel Amenities



11 Buildings Totaling \pm 192,600 SF



Grade Level & Dock-High Loading



Comcast High Speed Internet

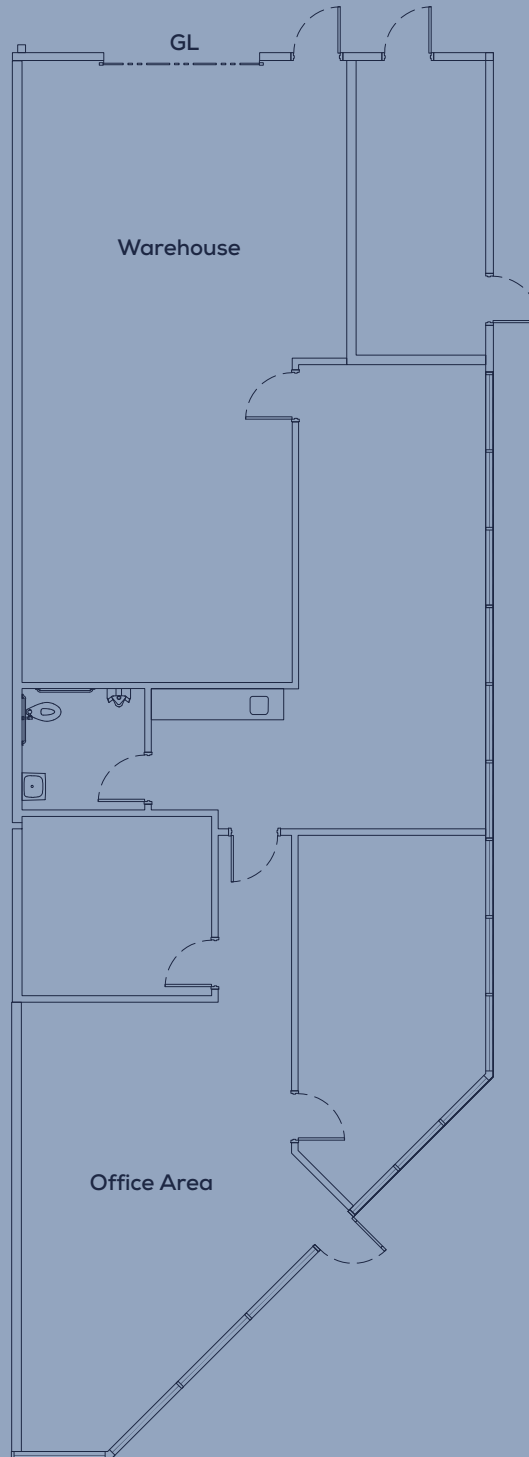
Site Plan

BUILDING	Suite	Total SF	Office	Status
Bldg. 6681 Sierra Court	A	± 2,375 SF	± 75%	Available Now
Bldg. 6711 Sierra Court	C	± 1,714 SF	± 80%	Available within 30 Days
Bldg. 6735 Sierra Court	A	± 3,773 SF	± 60%	Available within 30 Days
Bldg. 6735 Sierra Court	B	± 1,762 SF	± 30%	Available within 30 Days



Floor Plan

Building 6681
Suite A

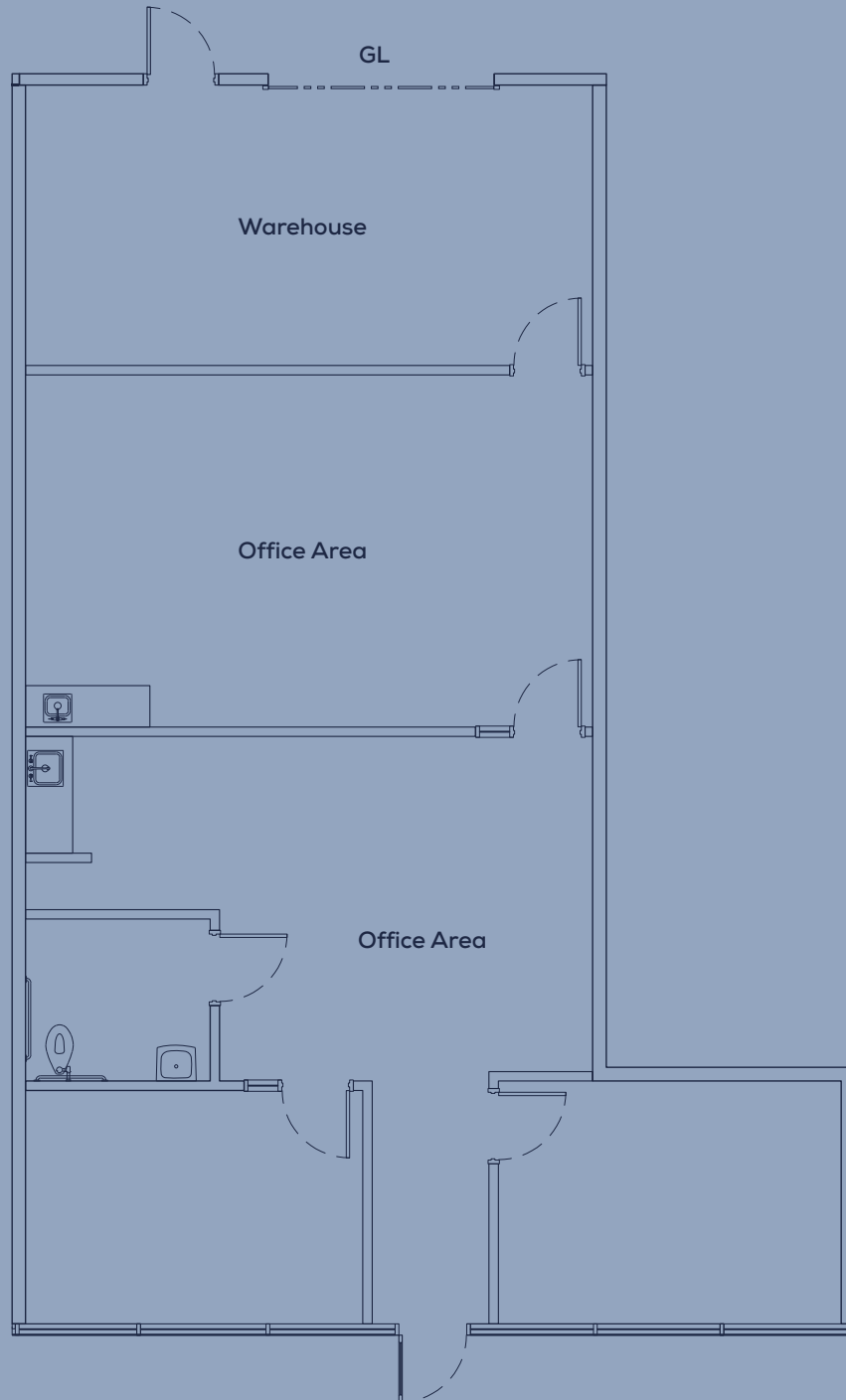


Suite A Building 6681

Total SF	± 2,375 SF
Office	± 75%
Status	Available

Floor Plan

Building 6711
Suite C

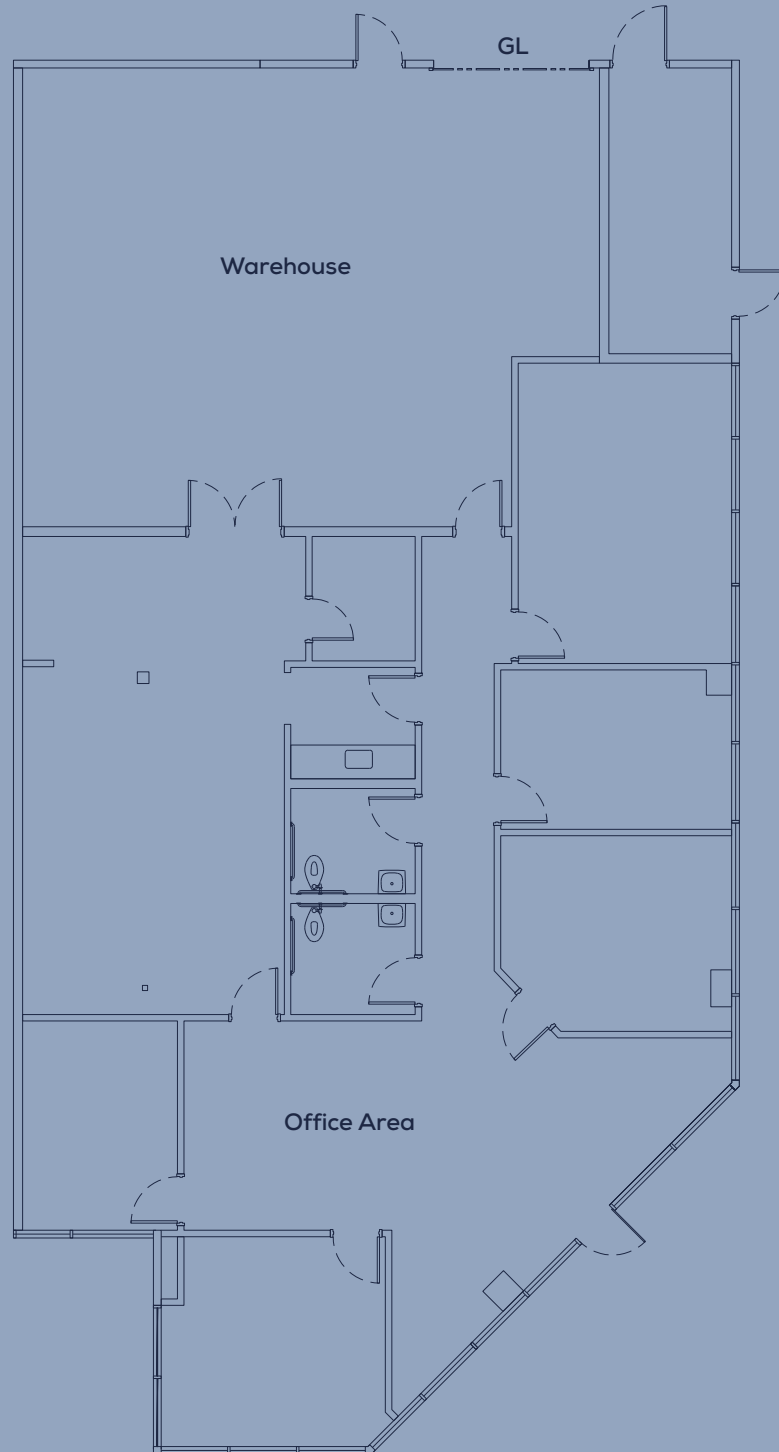


Suite C Building 6711

Total SF	± 1,714 SF
Office	± 80%
Status	Available

Floor Plan

**Building 6735
Suite A**

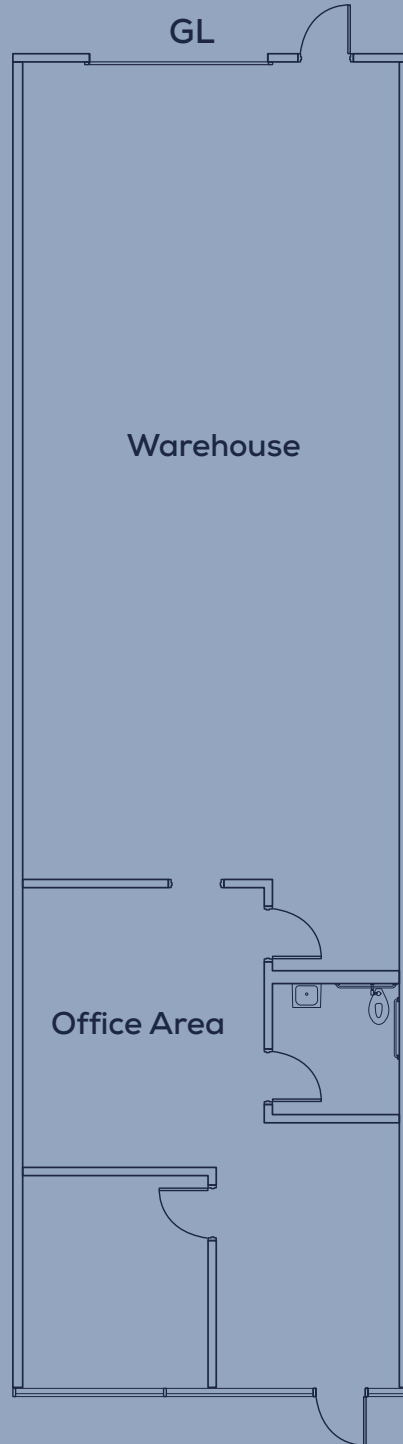


Suite A Building 6735

Total SF	± 3,773 SF
Office	± 60%
Status	Available

Floor Plan

Building 6735
Suite B



Suite B
Building 6735

Total SF	±1,762 SF
Office	± 30%
Status	Available

SIERRA TRINITY
BUSINESS PARK



Contact Us

Mike Carrigg - SIOR
CA Lic. 01298928

michael.carrigg@colliers.com
925 227 6220

Mike Lloyd - SIOR
CA Lic. 00924182

michael.lloyd@colliers.com
925 227 6208

All information furnished regarding property for sale, rental or financing is from sources deemed reliable, but no warranty or representation is made to the accuracy thereof and same is submitted to errors, omissions, change of price, rental or other conditions prior to sale, lease or financing or withdrawal without notice. No liability of any kind is to be imposed on the broker or owner herein.

Professionally Managed By:



Exclusively Represented By:

