

FOR SALE



Location:

18065 Harwood Avenue, Homewood, IL - located in the heart of Downtown Homewood on main retail thoroughfare. Directly across from the new Metra commuter train and Amtrak Station. Strongest south suburban trade areas.

Details:

5,000 SF For Sale (can be increased to 8,000 SF with purchase of adjacent commercial unit. Lower level. Abundant on-site parking lot.

SCHRAMKO REAL ESTATE CORPORATION
113 S. Garfield Street, Suite 200, Hinsdale, IL 60521
(630) 986-9400



- Total of 5,000 SF (Can be increased to 8,000 SF with purchase of adjacent space)
- Space available has ideal commercial build out suitable for many uses including retail, service businesses or restaurant.
- Adjacent to Starbucks.
- Generous on-site parking lot. Adjacent municipal lot for employees & clients.
- Surrounded by dynamic suburban downtown CBD with new construction, residential, hotel, restaurants and retail.
- Directly across from New Metra/Amtrak Station

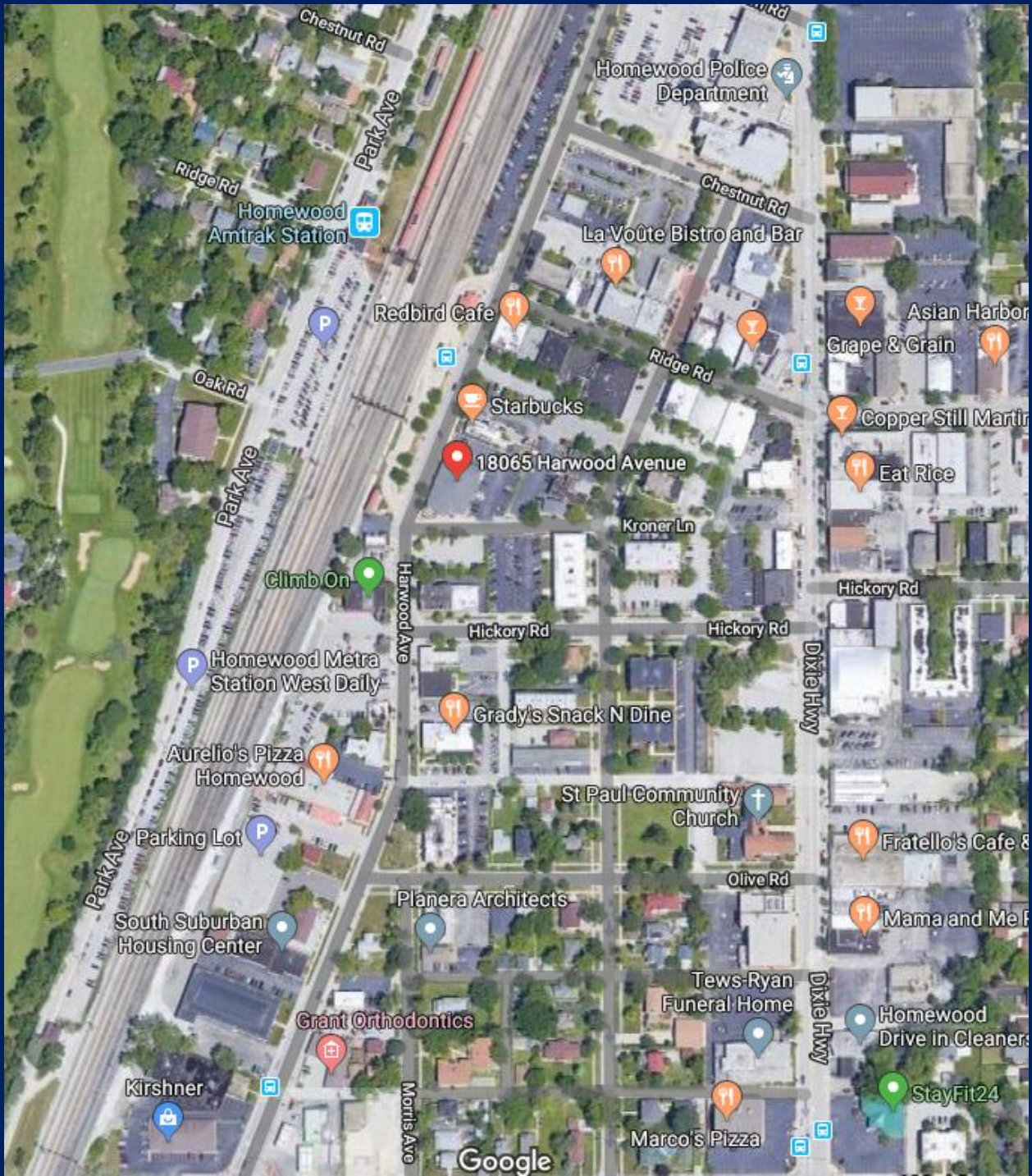








18065 Harwood Avenue
5,000 SF



Chris Schramko
(630) 986-9400 or cjschramko@schramko.com
113 S. Garfield Street, Suite 200, Hinsdale, IL 60521