

Former Bank of America Branch

1749 Gordon Highway, Augusta, GA 30904



OFFERING SUMMARY

Available SF: 4,405 SF

Lease Rate: \$15 SF/yr (NNN)

Lot Size: 4.33 Acres

Year Built: 1978

Zoning: B-2

PROPERTY OVERVIEW

This former Bank of America retail branch is located at 1749 Gordon Highway in Augusta, GA. This exceptional property boasts high visibility and easy access, making it an ideal location for businesses seeking prominence and convenience. With ample parking, this space provides a comfortable and functional environment for tenants and visitors alike. The property's strategic location offers proximity to major highways, ensuring seamless connectivity and accessibility. Whether for retail, office, or service-oriented businesses, this versatile property sets the stage for success in a thriving commercial district. Take advantage of this opportunity to elevate your business in a prominent and dynamic setting.

LOCATION OVERVIEW

This location offers a blend of connectivity and traffic with easy access to downtown Augusta and Fort Eisenhower. Enjoy seamless commutes and accessibility to major thoroughfares, fostering a dynamic and connected workplace environment. Site is in close proximity to I:520 with easy ingress/egress.

SHERMAN & HEMSTREET REAL ESTATE COMPANY

4316 Washington Road, Evans, GA 30809
shermanandhemstreet.com
706.722.8334

JOE EDGE, SIOR, CCIM

jedge@shermanandhemstreet.com
706.288.1077

Former Bank of America Branch

1749 Gordon Highway, Augusta, GA 30904



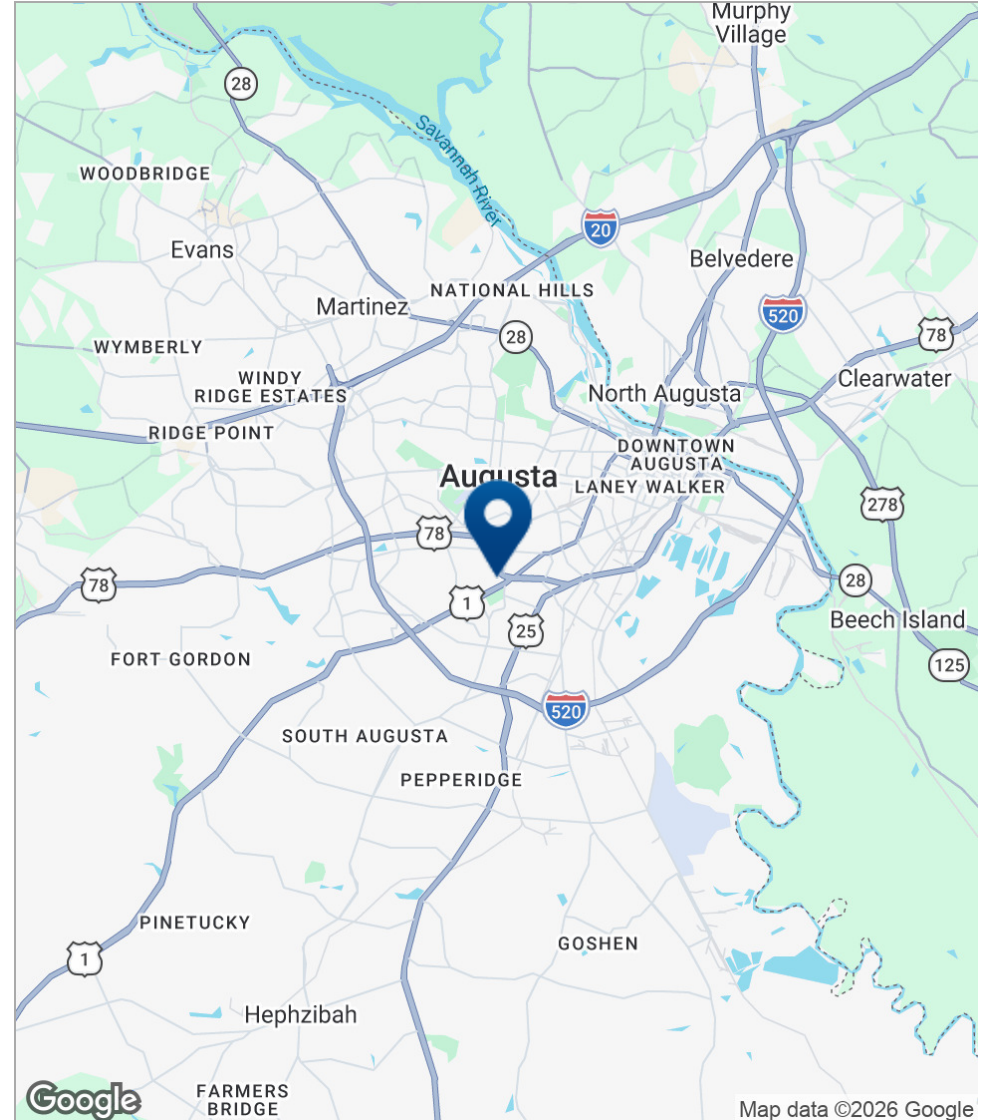
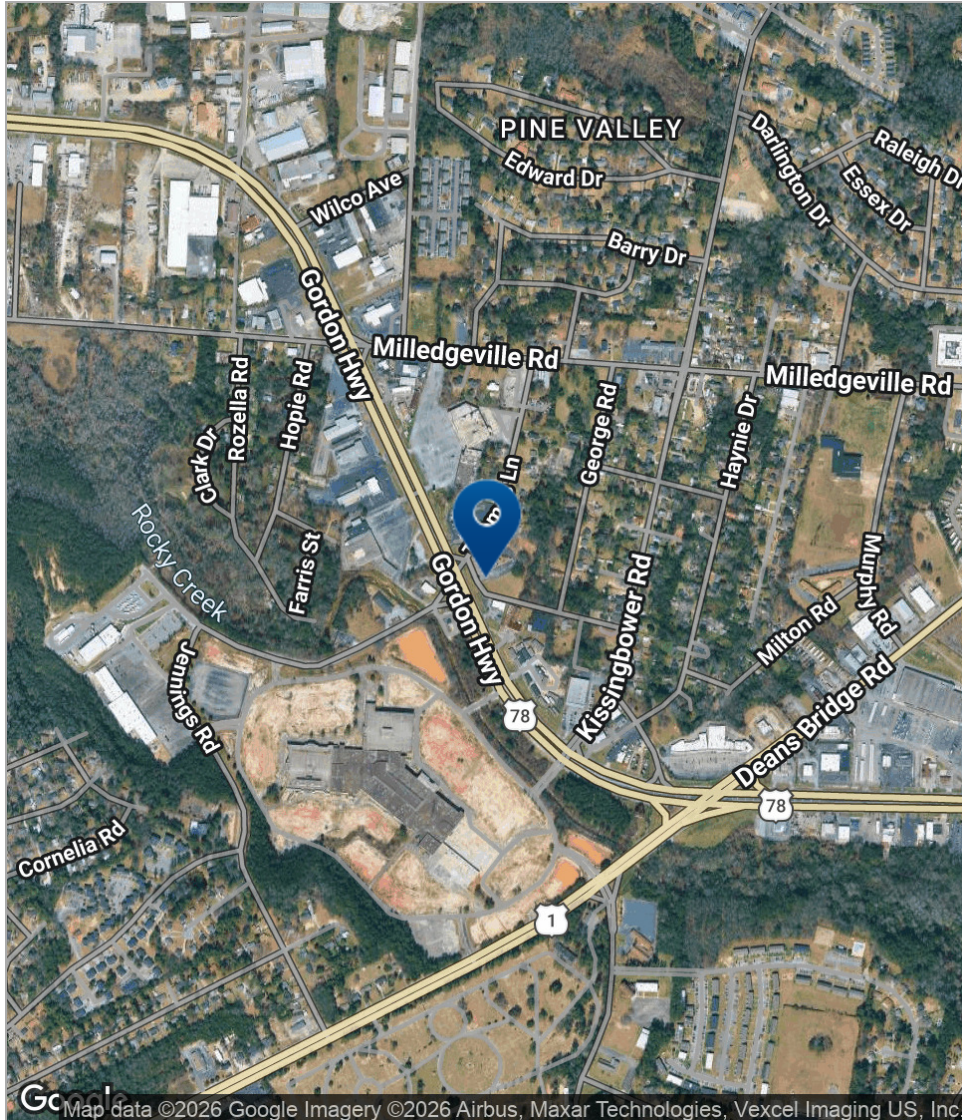
Former Bank of America Branch

1749 Gordon Highway, Augusta, GA 30904



Former Bank of America Branch

1749 Gordon Highway, Augusta, GA 30904



SHERMAN & HEMSTREET REAL ESTATE COMPANY

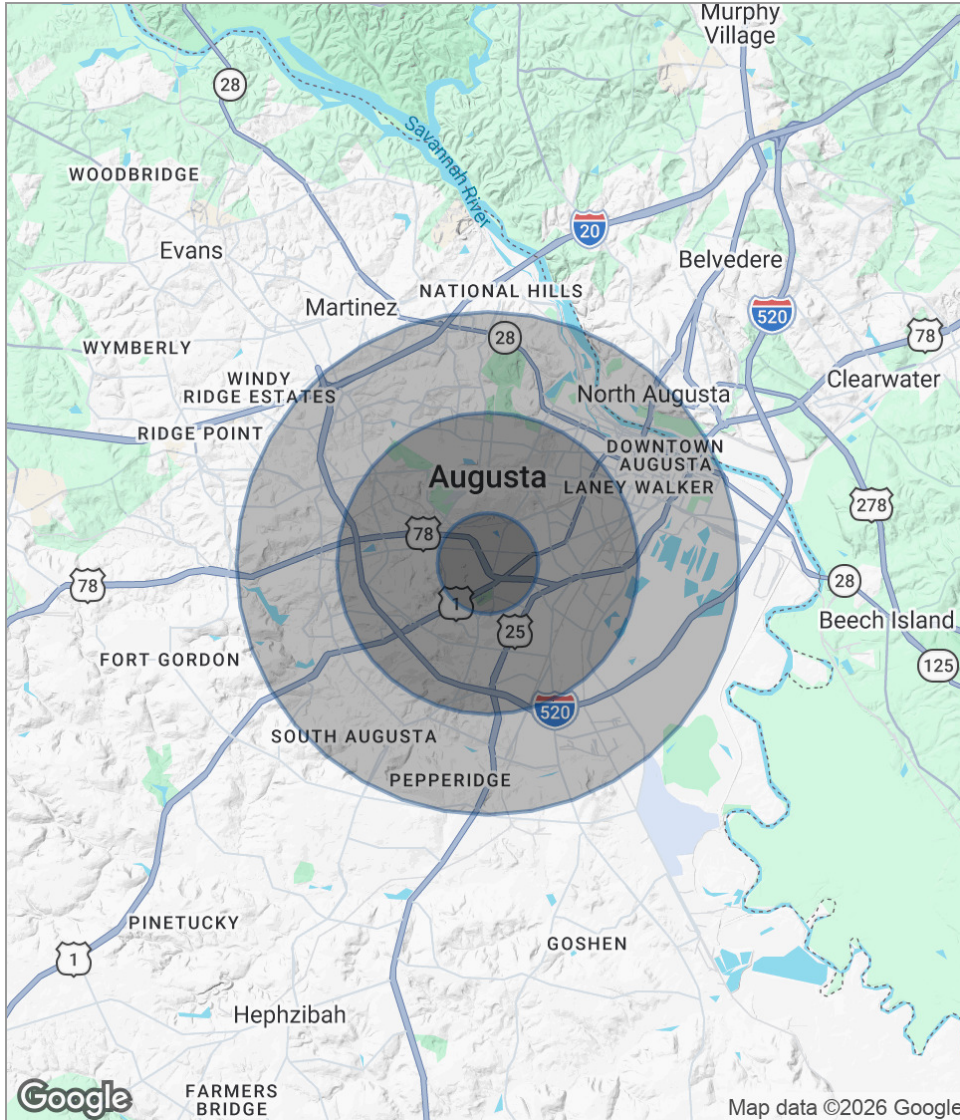
4316 Washington Road, Evans, GA 30809
shermanandhemstreet.com
706.722.8334

JOE EDGE, SIOR, CCIM

jedge@shermanandhemstreet.com
706.288.1077

Former Bank of America Branch

1749 Gordon Highway, Augusta, GA 30904



POPULATION

	1 MILE	3 MILES	5 MILES
Total population	7,318	58,346	132,036
Median age	33.8	35.6	37.6
Median age (Male)	29.0	32.7	34.8
Median age (Female)	36.5	37.5	39.6

HOUSEHOLDS & INCOME

	1 MILE	3 MILES	5 MILES
Total households	2,812	22,513	52,260
# of persons per HH	2.6	2.6	2.5
Average HH income	\$38,188	\$65,085	\$71,047
Average house value	\$65,585	\$156,586	\$183,181

* Demographic data derived from 2020 ACS - US Census

Former Bank of America Branch

1749 Gordon Highway, Augusta, GA 30904

JOE EDGE, SIOR, CCIM

President & Broker



4316 Washington Road
Evans, GA 30809
T 706.288.1077
C 706.627.2789
jedge@shermanandhemstreet.com



PROFESSIONAL BACKGROUND

Joe Edge is a seasoned commercial real estate broker with more than twenty years of experience in the commercial real estate industry. Following four years of service in the United States Marine Corps, he began his career in real estate and, in 2006, acquired Sherman & Hemstreet Real Estate, a firm that now has more than a century of history. Under his leadership, Sherman & Hemstreet has grown into one of the largest commercial real estate firms in the area, providing comprehensive real estate services across the Southeastern United States.

Licensed in both Georgia and South Carolina, Joe personally oversees transactions throughout both states. He holds the Certified Commercial Investment Member (CCIM) and Society of Industrial and Office Realtors (SIOR) designations—two of the most prestigious credentials in the industry. The CCIM designation represents the highest level of expertise for investment sales brokers, while the SIOR designation recognizes top-tier office and industrial brokers who meet rigorous production and performance standards. In addition, Joe is a candidate for the Certified Property Manager (CPM) designation, reflecting his commitment to excellence in property management.

Through his leadership, Sherman & Hemstreet continues to set the standard for commercial real estate services in the region, building on its historic legacy with innovative strategies and a client-focused approach.

MEMBERSHIPS & AFFILIATIONS

Certified Commercial Investment Member (CCIM)
Society of Industrial and Office Realtors (SIOR)