

76 KINGDOM ST, EAGLE PASS | TX 78852



WAREHOUSE | 136,500 SF FOR SALE OR LEASE



FOR MORE PROPERTY INFORMATION AND SITE TOURS, PLEASE CONTACT:

ENRIQUE VOLKMER, SIOR
210.889.6430 | enriquev@stx-cre.com

EDWARD VILLAREAL, SIOR
956.994.8900 | edwardv@stx-cre.com

SOUTH TEXAS COMMERCIAL | 102 Del Ct, Ste 102,
Laredo 78041 | 956.712.8022

Disclaimer. The information contained herein was obtained from sources believed reliable. South Texas Commercial makes no guarantees, warranties or representations as to the completeness or accuracy thereof. The presentation of this property is submitted subject to errors, omissions, change of price or conditions, prior sale/lease, or withdrawal without notice.

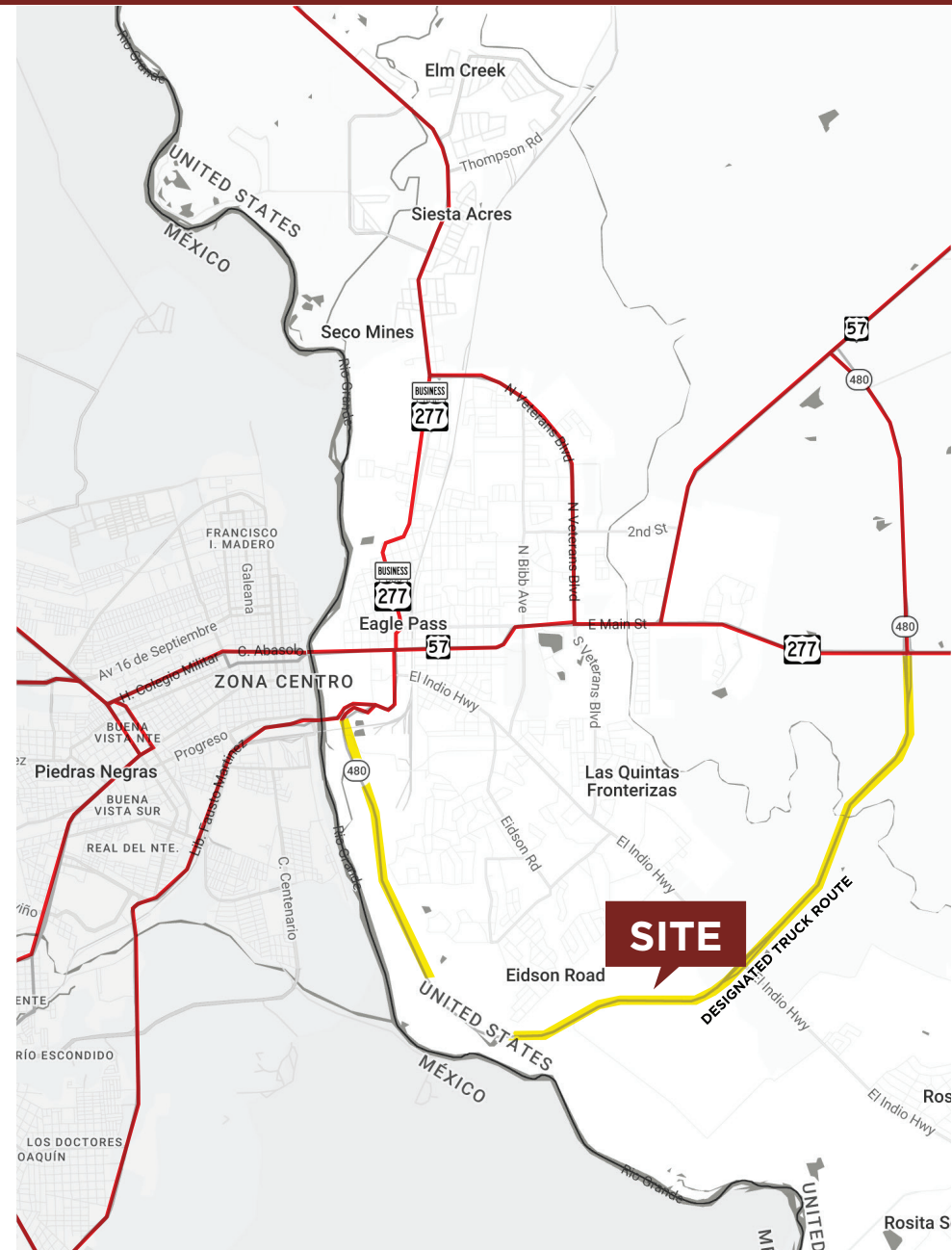
PROPERTY SUMMARY

76 Kingdom St is a new Class A industrial development currently under construction within EMPIRE Industrial Park in Eagle Pass, Texas, with delivery anticipated in Q2 2027. Strategically positioned near Highway 480 and El Indio Highway (FM 1021), the property offers excellent connectivity to the Camino Real International Bridge and key commercial trade routes, making it an ideal location for logistics, warehousing, and cross-border distribution operations.

In addition, the facility is being developed to support efficient industrial operations with modern construction standards, functional circulation, and ample parking capacity. Located within the region’s premier industrial park, the property offers a strong opportunity for tenants seeking scalable Class A space in the rapidly growing Eagle Pass logistics market.

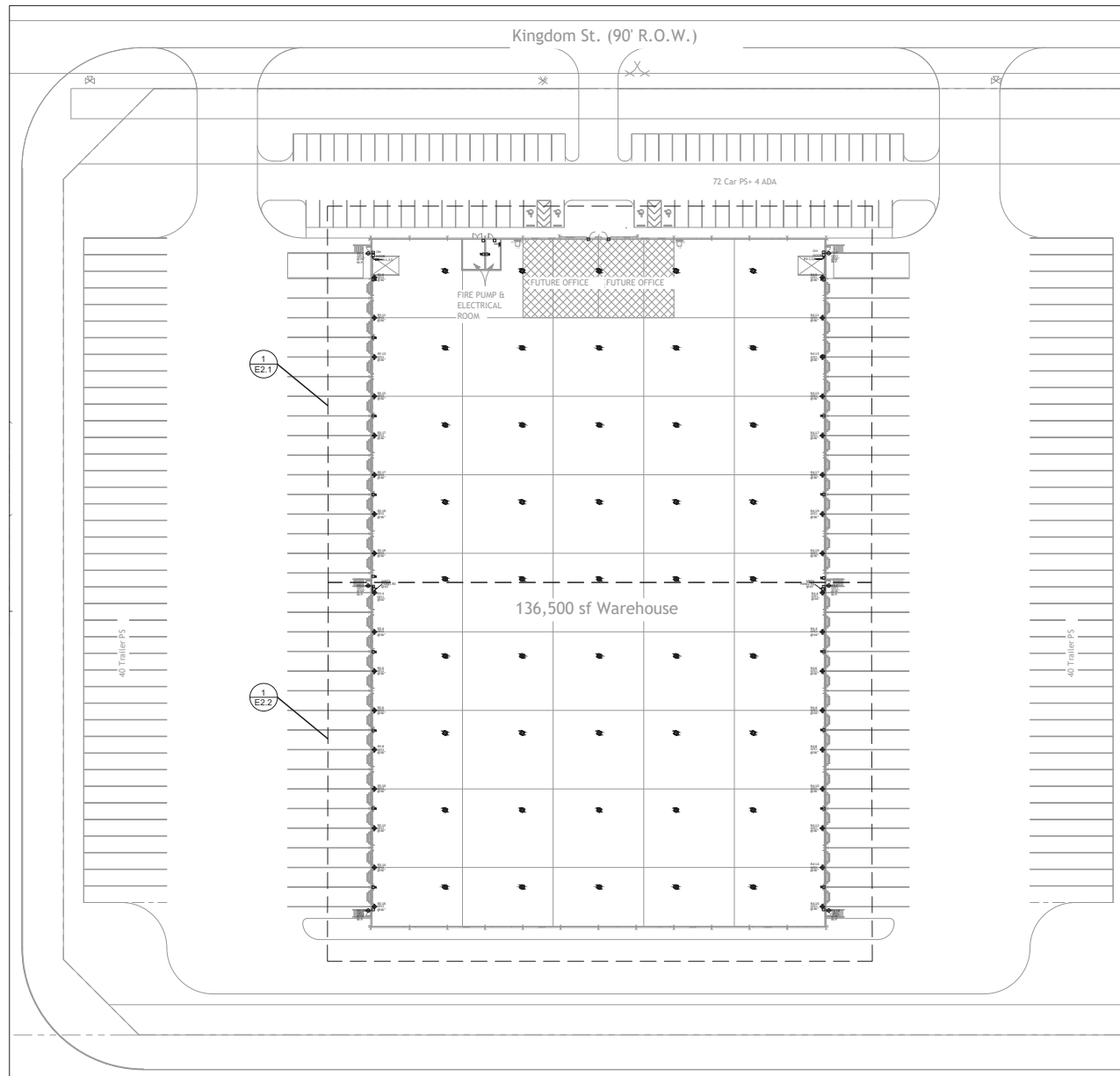
PROPERTY FEATURES

Total Building Size:	±136,500 SF
Available SF:	Divisible to ±68,250 SF minimum
Office Space:	±3,000 SF office space
Trailer Parking Spots:	80 trailer parking spaces &
Auto Parking Spots:	76 auto parking spaces
Clear Height:	10'
Dock Doors:	62 overhead dock doors with dock-high levelers
Dock Equipment:	Edge of Dock Levelers
Construction:	Tilt Up Walls
Column Spacing:	60'x52'
Fire Protection:	Wet Sprinklers
Lighting:	LED warehouse lighting with motion sensors
Year Built:	2027



76 KINGDOM ST | EAGLE PASS, TX 78852

SITE PLAN





76 KINGDOM ST | EAGLE PASS, TX 78852
AERIAL





FOR INFORMATION & SITE TOURS CONTACT:

ENRIQUE VOLKMER, SIOR

South Texas Commercial
enriquev@stx-cre.com

210.889.6430

EDWARD VILLAREAL, SIOR

South Texas Commercial
edwardv@stx-cre.com

956.731.4433

SOUTH TEXAS COMMERCIAL

102 Del Ct, Ste 102,
Laredo 78041
956.712.8022



The information contained herein is proprietary and strictly confidential. It is intended to be reviewed only by the party receiving it from South Texas Commercial, and should not be made available to any other person or entity without the written consent of the Brokerage. This Marketing Brochure has been prepared to provide summary, unverified information to prospective purchasers, and to establish only a preliminary level of interest in the subject property. The information contained herein is not a substitute for a thorough due diligence investigation. South Texas Commercial has not made any investigation, and makes no warranty or representation, with respect to the income or expenses for the subject property, the future projected financial performance of the property, the size and square footage of the property and improvements, the presence or absence of contaminating substances, PCB's or asbestos, the compliance with State and Federal regulations, the physical condition of improvements thereon, or the financial condition or business prospects of any tenant, or any tenant's plans or intentions to continue occupancy of the subject property.

The information contained herein has been obtained from sources we believe to be reliable; however, South Texas Commercial has not verified, and will not verify, any of the information contained herein, nor has the aforementioned Brokerage conducted any investigation regarding these matters and make no warranty or representation whatsoever regarding the accuracy or completeness of the information provided. All potential purchasers must take appropriate measures to verify all of the information set forth herein.