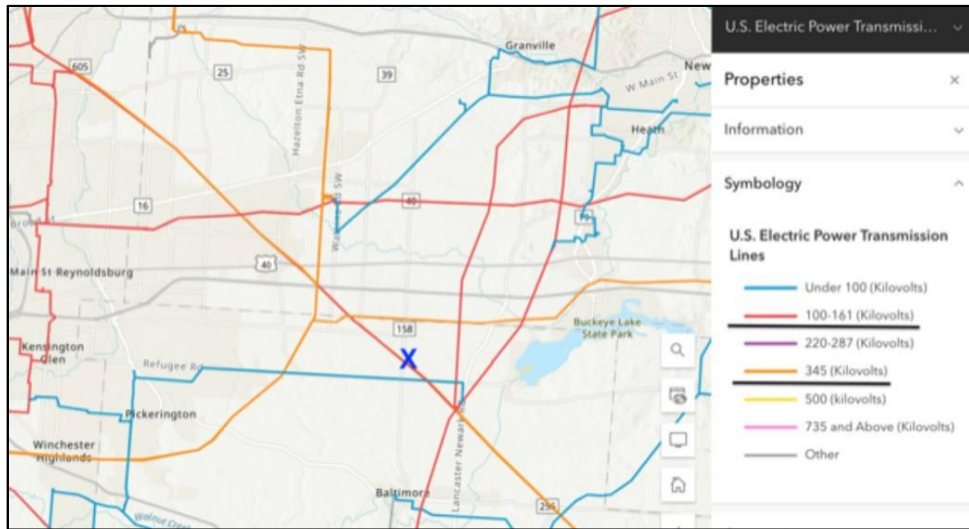


**12930 Lancaster Kirkersville Road NW-Route 58 FRONTAGE/FUTURE DATA/INDUSTRIAL  
202 Acres+/- of Land (Negotiable Pricing) in Baltimore, Ohio 43105**



**PROPERTY FEATURES**

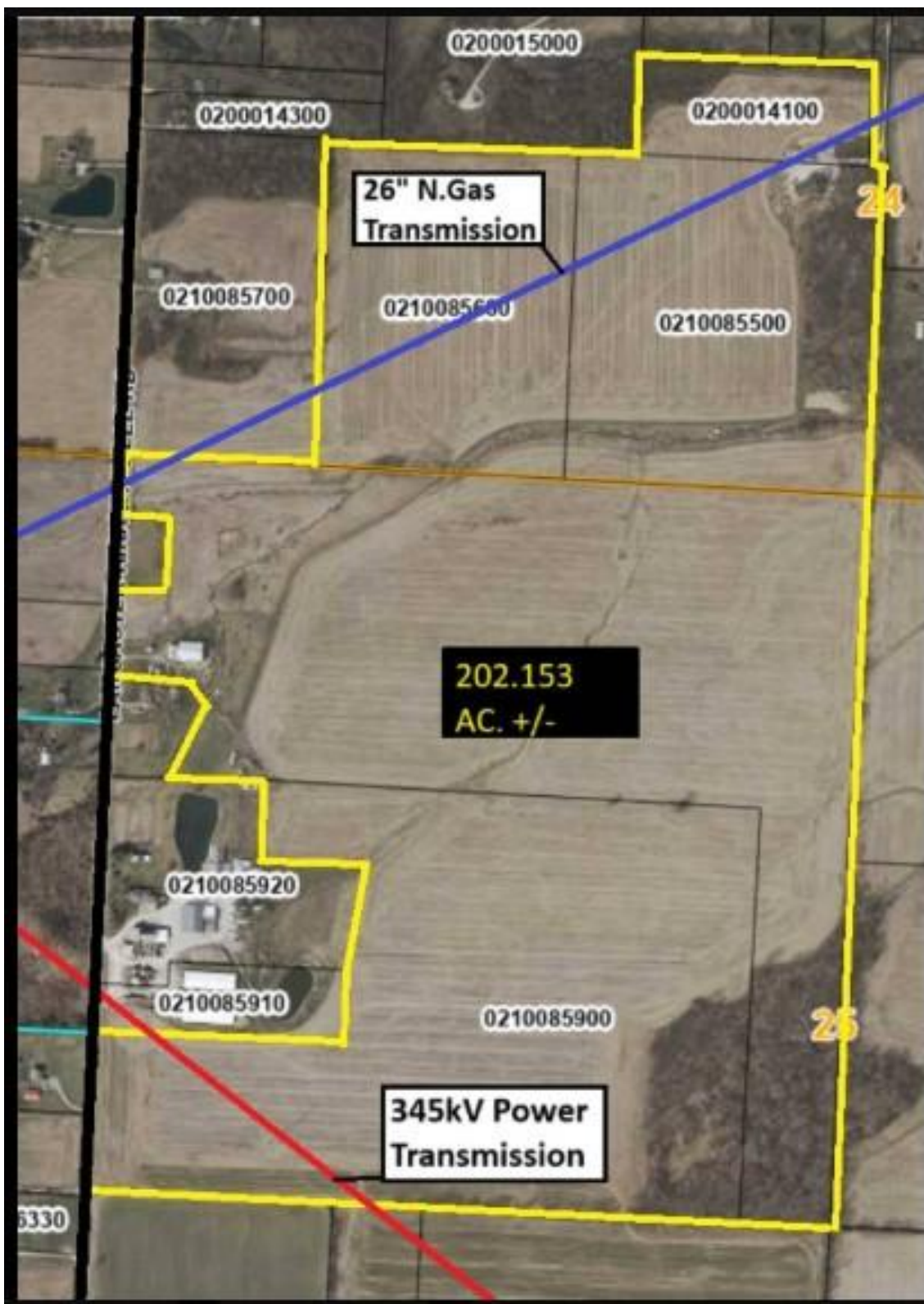
- »202+/- Acres
- »Gen.26” North Gas Line
- »345 kV AEP Transmission
- »Power Line on Site

**CONTACT- LISTING AGENT**

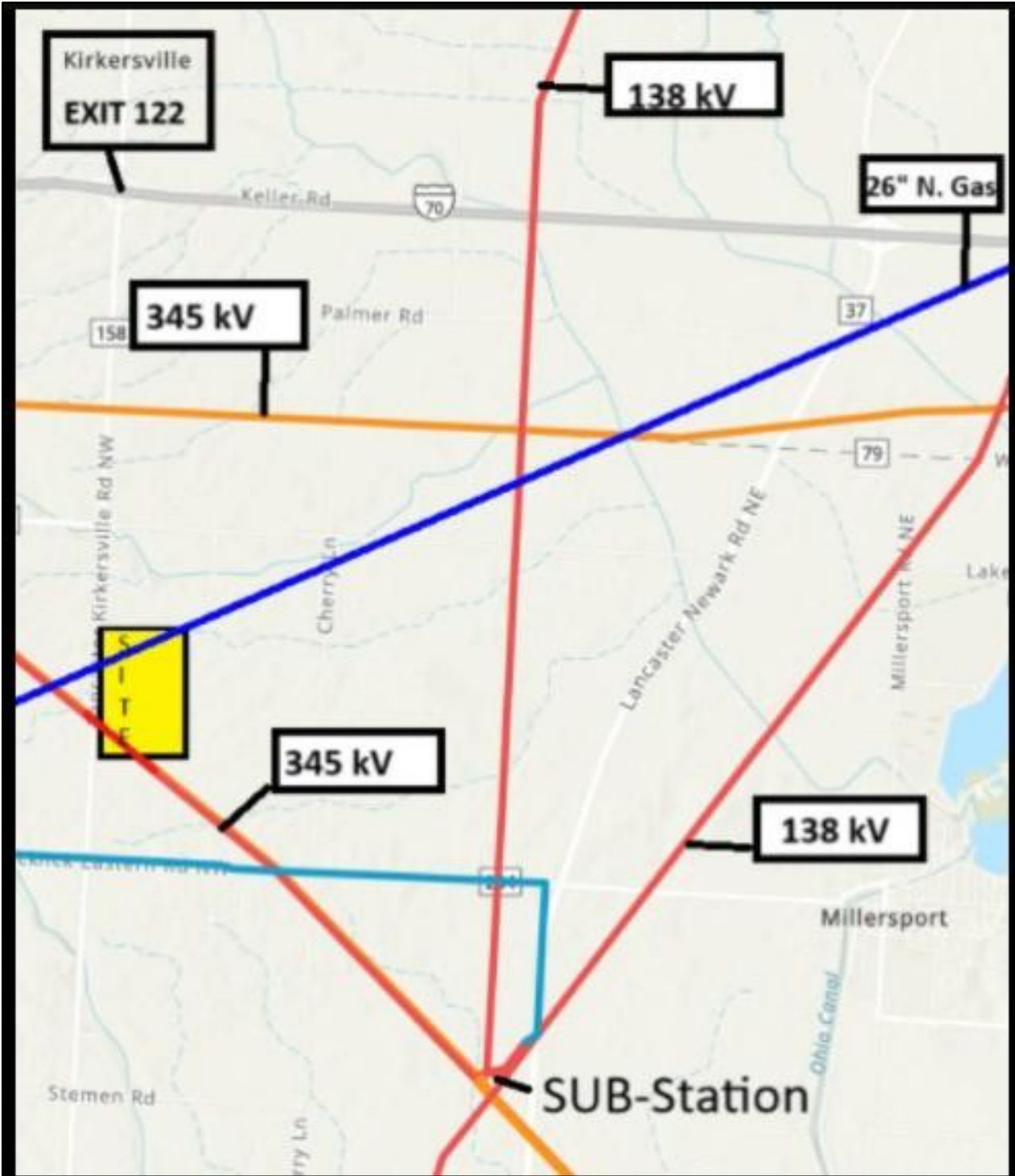
**David Coe ♦ Real Estate Listing Agent**  
**SMRE Brokerage**  
[dcenterpriseholdings@gmail.com](mailto:dcenterpriseholdings@gmail.com)  
**Phone: 614-506-4190**  
[www.smrebrokerage.org](http://www.smrebrokerage.org)



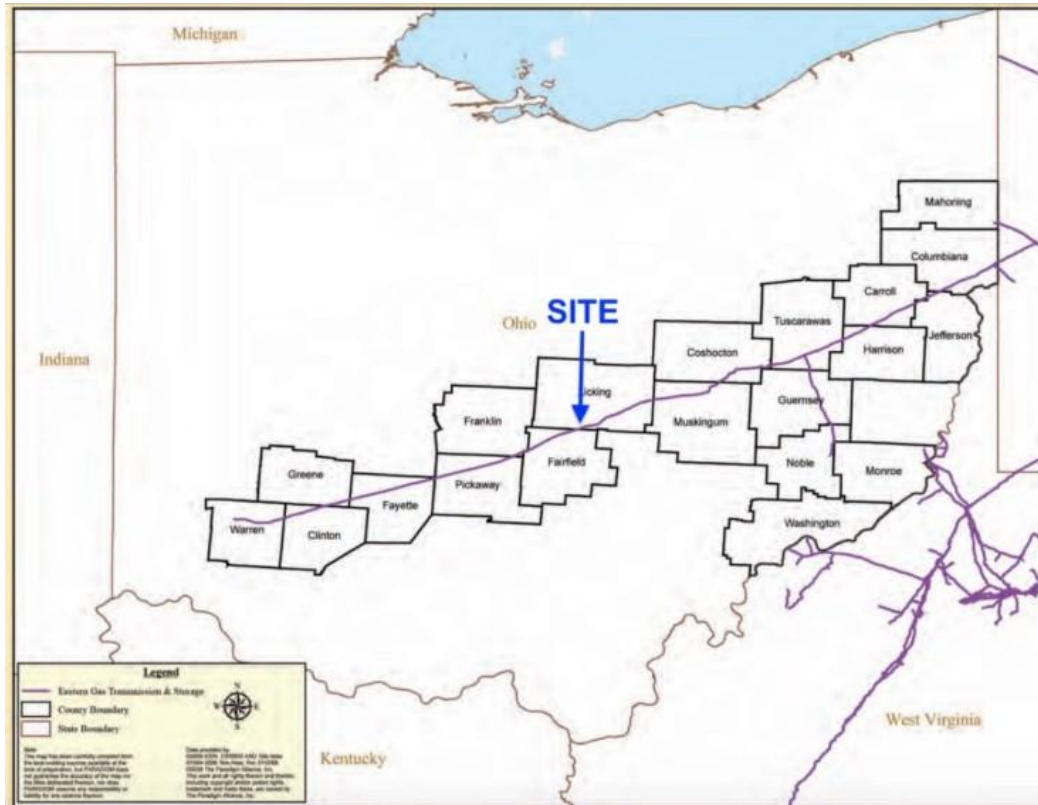
**12930 Lancaster Kirkersville Road NW-Route 58 FRONTAGE/FUTURE DATA/INDUSTRIAL  
202 Acres +/- of Land (Negotiable Pricing) in Baltimore, Ohio 43105**



**12930 Lancaster Kirkersville Road NW-Route 58 FRONTAGE/FUTURE DATA/INDUSTRIAL  
202 Acres +/- of Land (Negotiable Pricing) in Baltimore, Ohio 43105**

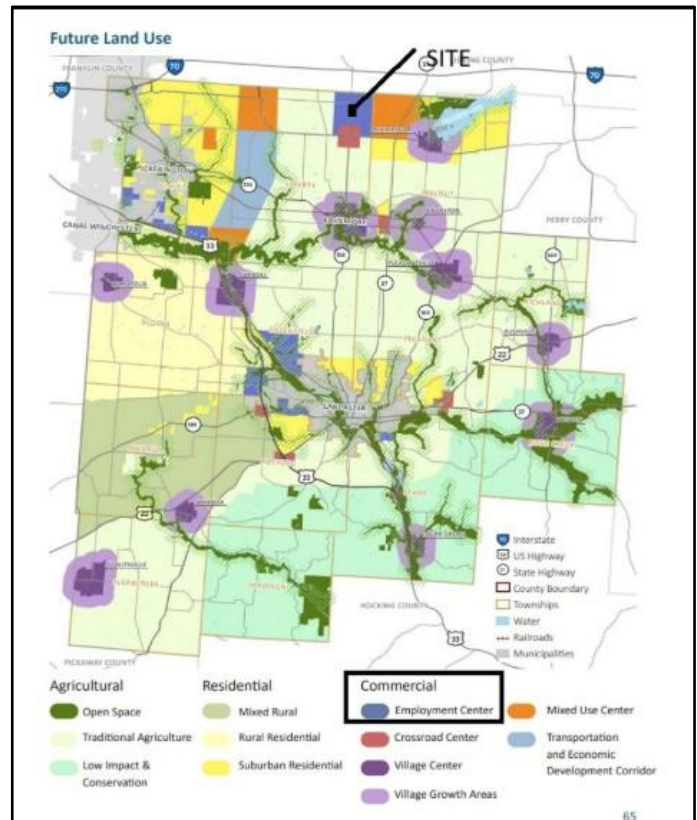


**12930 Lancaster Kirkersville Road NW-Route 58 FRONTAGE/FUTURE DATA/INDUSTRIAL  
202 Acres +/- of Land (Negotiable Pricing) in Baltimore, Ohio 43105**



**BY THE NUMBERS**

- Approximately 4,000 miles of pipeline
- Ability to deliver 9.5 bcf/day
- Nearly 756 bcf of total operated design storage capacity and 420 bcf of working gas capacity
- 6 states of operation: Maryland, New York, Ohio, Pennsylvania, Virginia and West Virginia
- 93 compressor stations with more than 985,000 horsepower
- Bridgeport office is 1<sup>st</sup> privately owned LEED Gold Certified building in West Virginia, opened in 2016



**12930 Lancaster Kirkersville Road NW-Route 58 FRONTAGE/FUTURE DATA/INDUSTRIAL  
202 Acres +/- of Land (Negotiable Pricing) in Baltimore, Ohio 43105**

### Liberty Township and Baltimore

- Located in the northwest quadrant of Fairfield County, the township sits between Violet and Walnut townships along the County's northern border. It contains Baltimore.
- Liberty Township has direct access to I-70 via SR310. It is also served by SR256 connecting Pickerington to Baltimore.
- The majority of Liberty Township is recommended as Traditional Agriculture, which supports farm operations and very low-density single-family home sites.
- The western portion of the township is designated as the Transportation and Economic Development Corridor to acknowledge the possible location of a connector linking US33 and I70.
- The northern end of the connector, which is in the township's northwest corner, is designated as a Mixed Use Center because of its proximity to I70 and potential to be served by County utilities. As a result, the plan supports employment uses, commercial, and suburban residential in this location.
- SR158 north of SR204 is recommended as an Employment Center given its proximity to I70. The intersection itself is recommended as a Crossroad Center where small retail, services, and office uses are appropriate.
- Baltimore is recommended as a Village Center, which recognizes the historic mixed-use pattern of the village. The plan recommends continued growth in the village.
- Flood hazard areas and a transition zone are noted along several streams.

