



**CBRE**

**2 Turn-Key Medical Suites Available**



**10 JAMES STREET**

FLORHAM PARK, NJ



Suites 100-110  
Suites 140  
Suites 130  
Suites 150

10 JAMES STREET  
PROFESSIONAL BUILDING

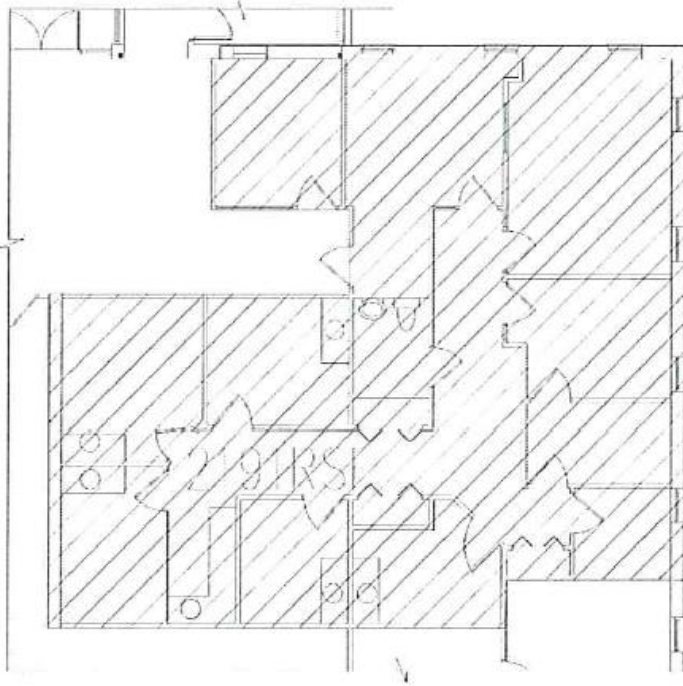
# For Lease

Building Size	18,000 SF
Availability	2,191 SF & 4,269 SF
Asking Rent	\$25.00/PSF NNN

# FLOOR PLANS

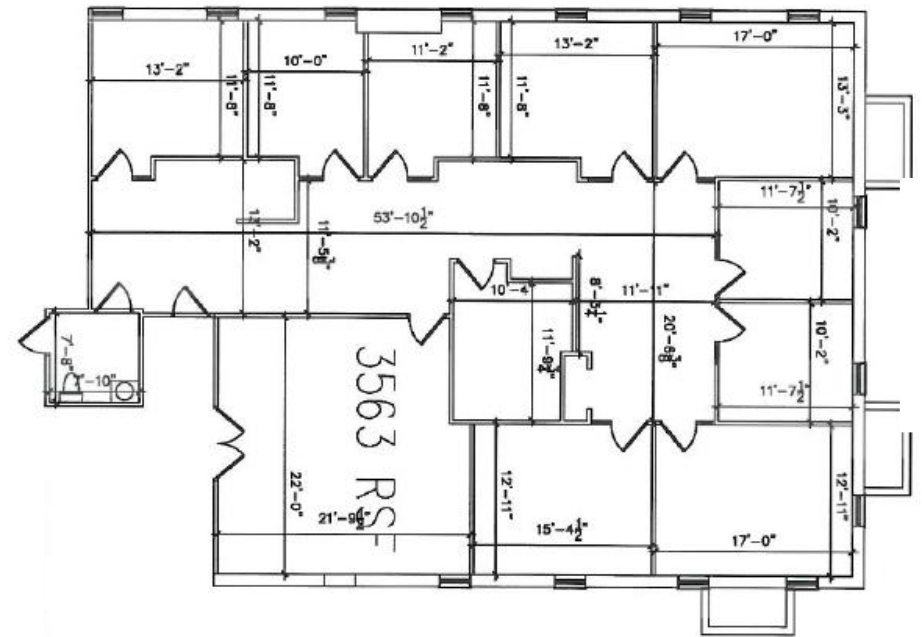
2,191 SF

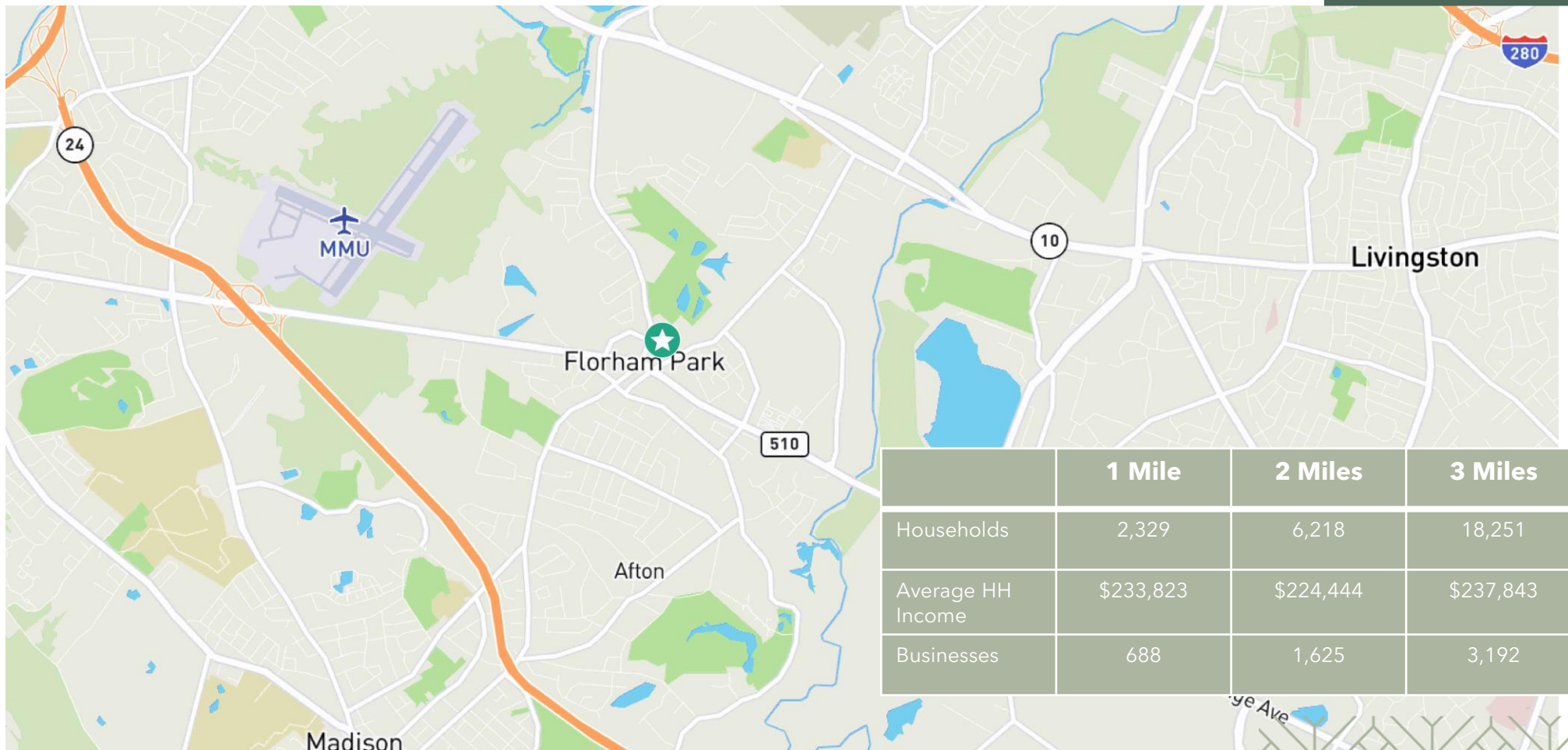
5 EXAM ROOMS



4,269 SF

7 EXAM ROOMS





# Contacts

Sam Bernhaut  
 Senior Vice President (Honorary Title)  
 T 201 712 5884  
 sam.bernhaut@cbre.com



© 2026 CBRE, Inc. All rights reserved. This information has been obtained from sources believed reliable but has not been verified for accuracy or completeness. CBRE, Inc. makes no guarantee, representation or warranty and accepts no responsibility or liability as to the accuracy, completeness, or reliability of the information contained herein. You should conduct a careful, independent investigation of the property and verify all information. Any reliance on this information is solely at your own risk. CBRE and the CBRE logo are service marks of CBRE, Inc. All other marks displayed on this document are the property of their respective owners, and the use of such marks does not imply any affiliation with or endorsement of CBRE. Photos herein are the property of their respective owners. Use of these images without the express written consent of the owner is prohibited.