



For lease

Class A office space available
in a premier office/medical
park in West Des Moines

1,213 - 4,119 SF

6600 Westown Parkway
West Des Moines, Iowa 50266

Property specifications

Availability:

- Suite 165: 1,213 RSF
- Suite 190: 3,528 RSF
 - Available: 1/1/2027
- Suite 250: 3,634 RSF
- Suite 263: 4,119 RSF
 - Available: 1/1/2027

Lease rate: \$16.00/RSF NNN

Est. OPEX: \$11.58/RSF

Secured storage: \$50 per month

Total building size: 89,145 RSF

- Conference/fitness center available
- Ample on-site parking available
- R/U Factor: 1.15
- High visibility from I-80 and Westown Parkway
- Potential building signage
- Controlled security card entry and secured file storage available

Contact broker for
additional information

jll.com/des-moines

Jones Lang LaSalle Brokerage, Inc.

Lucas Hedstrom

Vice President

lucas.hedstrom@jll.com

+1 515 564 9269

Thomas Edwards

Associate

thomas.edwards@jll.com

+1 515 802 4684

Marucs R. Pitts, CCIM, SIOR

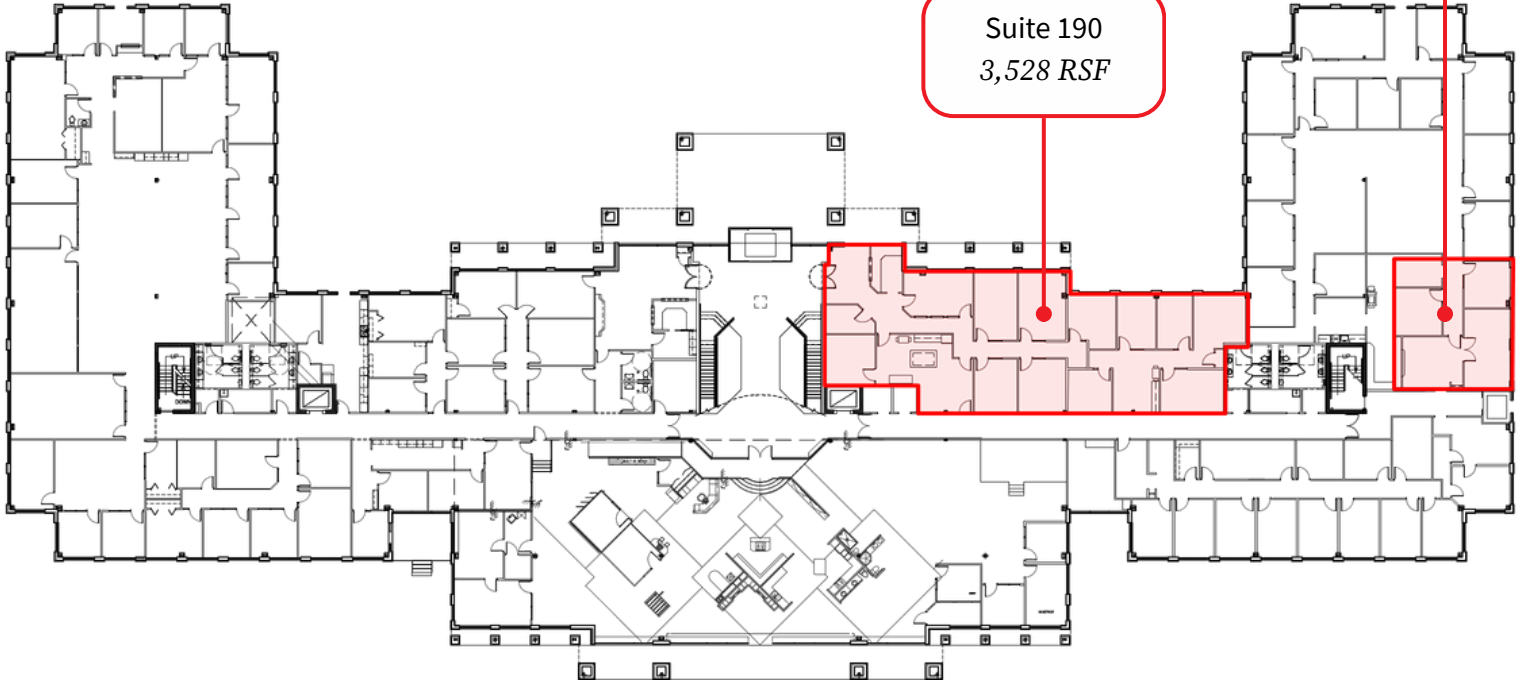
Executive Managing Director

marcus.pitts@jll.com

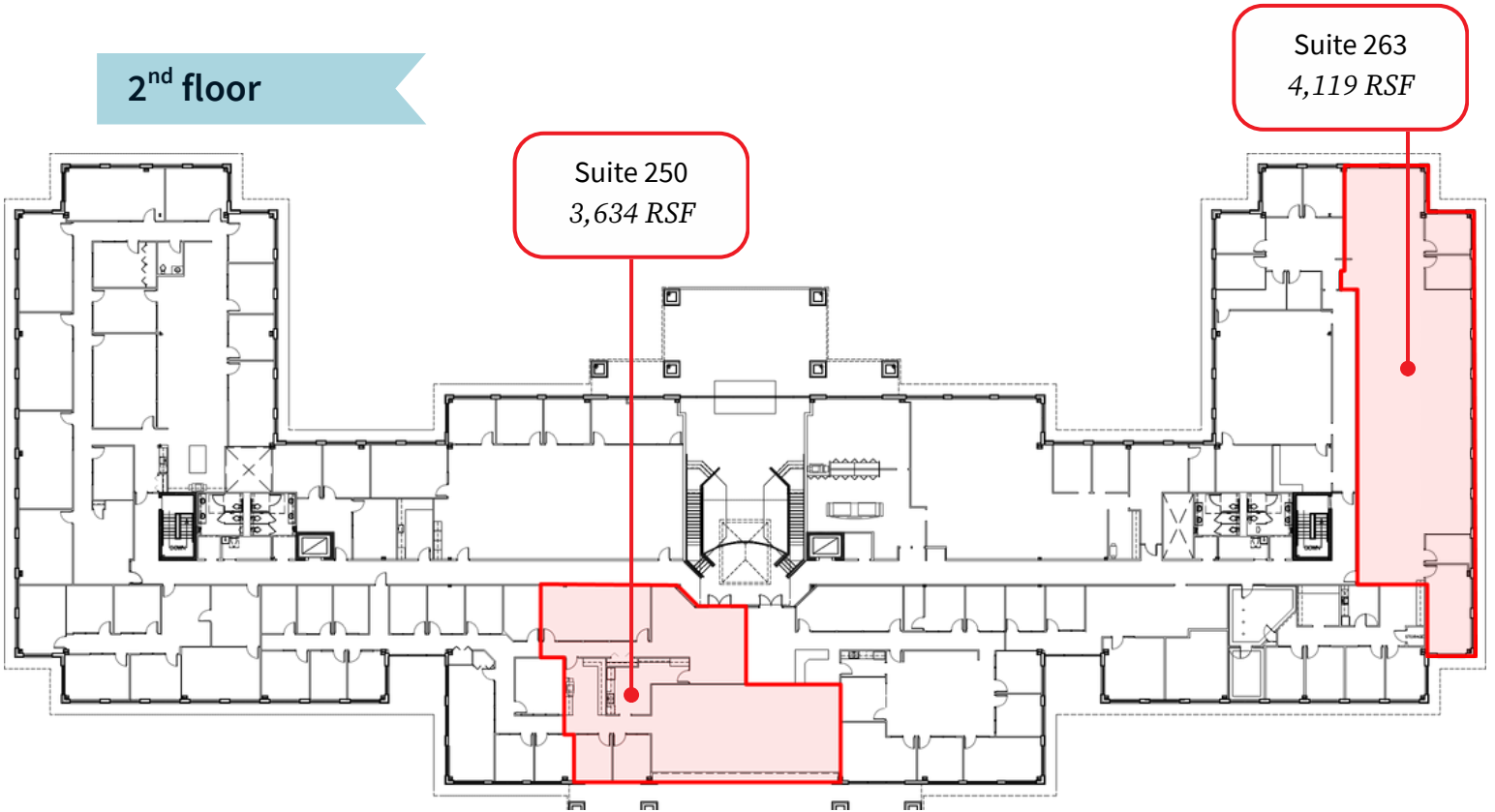
+1 515 556 4727

Floorplan

1st floor



2nd floor



Images



Suite 165



For lease

6600 Westown Parkway | West Des Moines, IA 50266



Lucas Hedstrom

lucas.hedstrom@jll.com

+1 515 564 9269

Thomas Edwards

thomas.edwards@jll.com

+1 515 802 4684

Marcus R. Pitts, CCIM, SIOR

marcus.pitts@jll.com

+1 515 556 4727

jll.com/des-moines

Jones Lang LaSalle Americas, Inc.

