



TRIPLE NINE
PINE



Warren, Ohio

UP TO 56,000 SF PREMIER OFFICE SPACE FOR SALE OR LEASE

FOR WHAT'S NEXT IN SUSTAINABLE
ENERGY SOLUTIONS AND TO SUPPORT
TOMORROW'S MANUFACTURING



[View Website](#)

CBRE

YOUR OFFICE
SOLUTION AT



TRIPLE NINE
PINE



999 PINE AVENUE SE
WARREN, OH

- Capability for full renovation to pursue LEED certification and a net-zero energy building
- Expansion option available to create high bay / flex space
- Potential for:
 - lab & technology development space
 - advanced-tech conference areas
 - accelerator space in affiliation with BRITE Energy Innovators

Building Type

Office/Data Center

Lease Rate

\$12.00/SF NNN

Building Size

56,000 SF

Sale Price

Negotiable

Typical Floor

28,000 SF

Heavy Power

Capable of 10 MW

Year Built

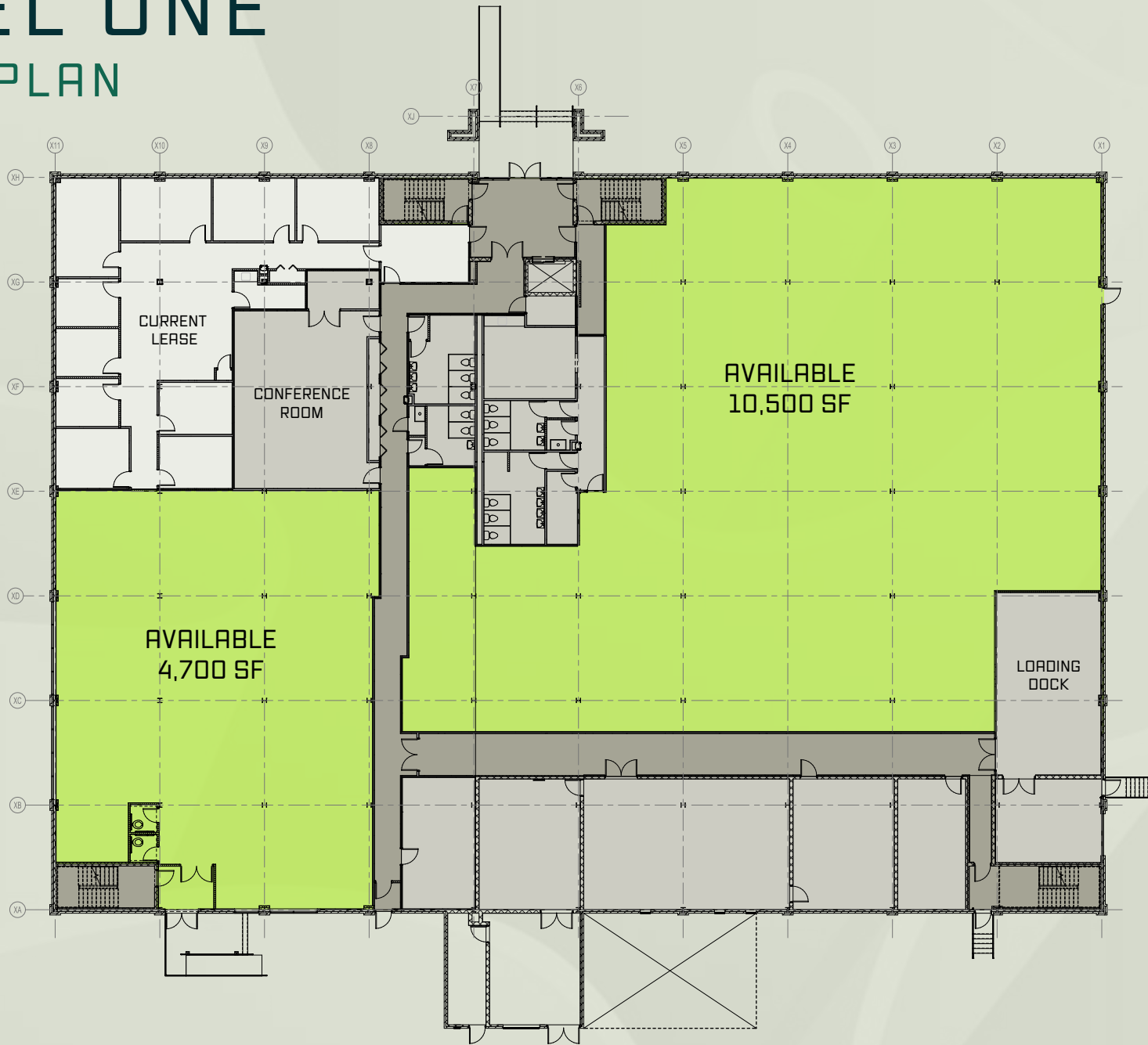
1979

HVAC System

48 Tons

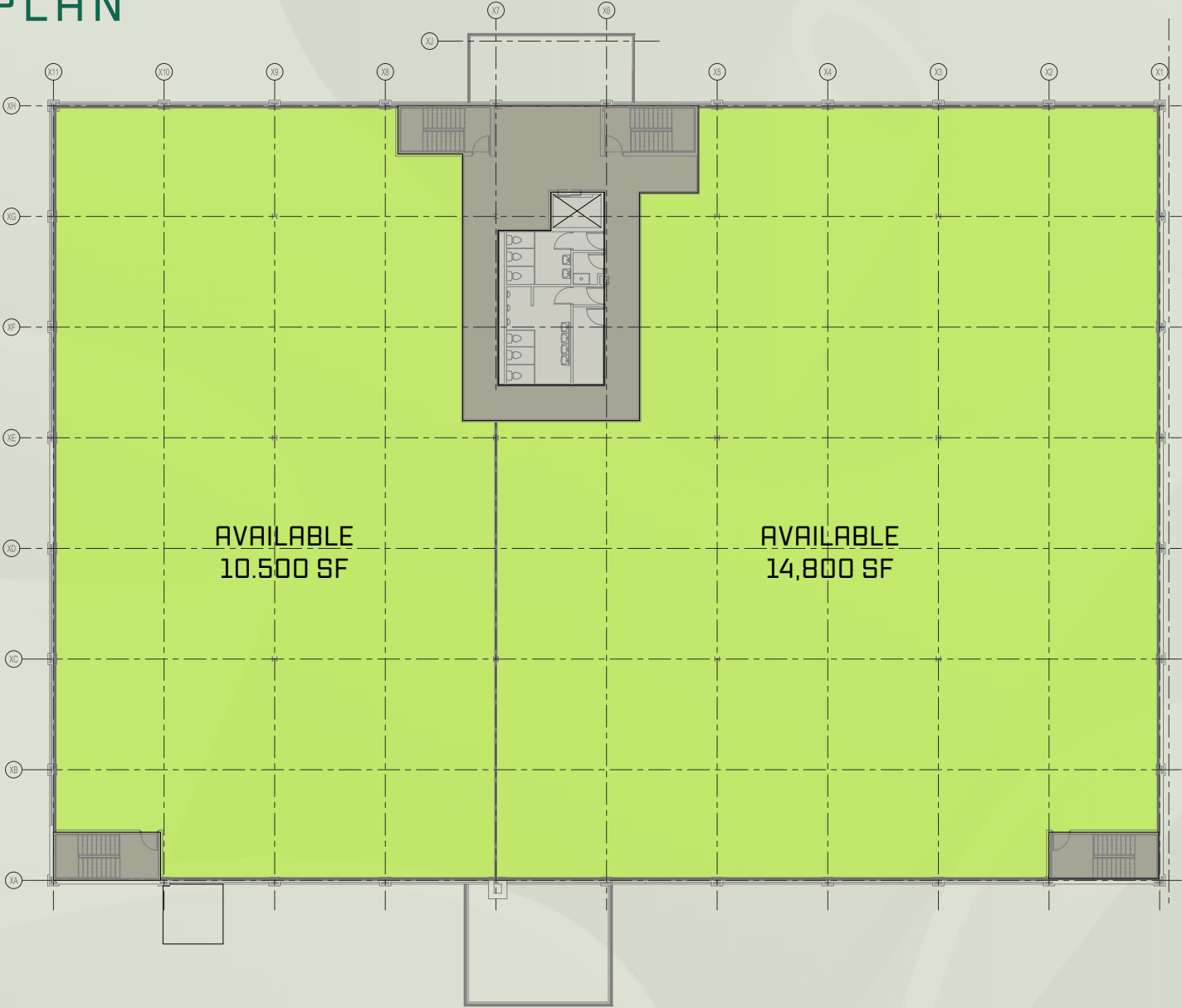
LEVEL ONE

FLOOR PLAN



LEVEL TWO

FLOOR PLAN



PERFECTLY POSITIONED

WARREN, OH



Hospital

EMPLOYED CIVILIAN
POPULATION AGES 16+

Lowest Employed Population

Highest Employed Population






TRIPLE NINE
PINE

Shovel-ready site located just
4 minutes / 2 miles south
of the office building


WARREN
TECH PARK


PIONEERING TOMORROW'S MANUFACTURING AT





Through ownership, investment, and alignment, Warren Tech Park will create a **unique ecosystem** that allows the creation, validation, and rapid deployment of forward-thinking energy solutions.

With **world-class facilities**, company-owned strategic property development locations, **access to industry expertise**, and co-location with emerging and startup companies, Warren Tech Park serves as an **incubator, accelerator, and technical and innovation center** in which to demonstrate, pilot and scale these innovations.

 [Learn More](#)

 **LEASE RATE**
\$3.00/SF for
existing buildings

 **STRATEGIC
LOCATION**
Within Voltage Valley

 **DIVISIBILITY**
divisible down to
40,000 SF (5 bays)

 **STRONG LABOR
POOL**
And low cost of living

 **184 ACRES
TOTAL**
150 acres of
shovel-ready land

 **MANUFACTURING
SUPPORT**
In close proximity



WHY NORTHEAST OHIO

Manufacturing is the largest of Ohio's 20 economic sectors, including government, with 15% of total output in 2021

As of 2021, Ohio's manufacturing sector GDP was \$114.8 billion, making it third in the nation – following California and Texas



6.3 MILLION
Population



8,700
Manufacturing plants



9,100
Wholesale/distribution centers



14 FORTUNE 500
Company world HQ's



Economic Impact of Ohio Manufacturing (2023)



2021 Economic Development Report Card



TRIPLE NINE PINE

Contact Us

STEVE LAZARIDES

FIRST VICE PRESIDENT

+1 330 806 6823

STEVE.LAZARIDES@CBRE.COM

NICHOLAS SMITH

ASSOCIATE

+1 440 212 6715

NICK.SMITH1@CBRE.COM



[View Website](#)

© 2025 CBRE, Inc. All rights reserved. This information has been obtained from sources believed reliable, but has not been verified for accuracy or completeness. You should conduct a careful, independent investigation of the property and verify all information. Any reliance on this information is solely at your own risk. CBRE and the CBRE logo are service marks of CBRE, Inc. All other marks displayed on this document are the property of their respective owners, and the use of such logos does not imply any affiliation with or endorsement of CBRE. Photos herein are the property of their respective owners. Use of these images without the express written consent of the owner is prohibited. PMStudios_March2024