

300

E Second St
RENO, NV 89501

**DOWNTOWN
OFFICE
FOR LEASE**

**Class A Office Steps from the
Ballpark**

**2,512 SF - 17,195 SF
Space Available**

YOUR NAME HERE

 **BASIN STREET**
PROPERTIES EST. 1974

DOMINIC BRUNETTI, CCIM
PRINCIPAL
775.850.3109 OFFICE
dbrunetti@dicksoncg.com
S.58419

PATRICK RIGGS
775.220.4957 CELL
priggs@dicksoncg.com
S.180878



"Basin Street provides wonderful office spaces and facilities. We appreciate their excellent communication and ability to answer our demands quickly and efficiently."

- Mike Richardson, Branch Manager Bay Equity Home Loans

YOUR NAME HERE

LOCATION HIGHLIGHTS

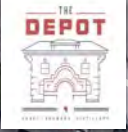
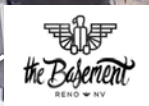
- Premier downtown location, in the center of it all
- Secure, ample covered parking for your employees and clients
- On-site management & facility engineer
- On-site security maintains strict oversight
- Next to the Courtyard by Marriott
- Up to 6 parking spaces per 1,000 square feet
- Take advantage of Opportunity Zone benefits
- New onsite fitness center
- 15th floor executive conference room with striking views for use of all tenants
- Darkshot Coffee Shop on the ground floor is NOW OPEN



DOWNTOWN AREA MAP



- Reno Aces Ballpark
- Starbucks
- Smith and River
- Pine State Biscuits
- Patagonia
- La Famiglia
- Pioneer Center for Performing Arts
- National Automobile Museum
- The Basement
- Renaissance Reno Downtown Hotel by Marriott
- Old Granite Street Eatery
- Nevada Museum of Art
- The Depot
- Bertha Miranda's
- Mellow Fellow Gastropub



MAJOR DOWNTOWN RENO DEVELOPMENTS

RENO ENTERTAINMENT DISTRICT

1,300 Luxury units, 70,000+ sf of retail, 170-room Hotel, and a 2-Acre Park



WEST END COMMONS

311 units, 42,000 sf office & retail space



NEVADA MUSEUM OF ART EXPANSION

50,000 sf, \$60MM expansion for educational initiatives, gallery exhibitions, and research



VESTA APARTMENTS

40 units on the corner of Vesta & Holcomb in MidTown



RIVERFRONT

393 units, 79 studios, 211 one bedroom & 100 two bedroom units



GRANTS LANDING

5.5 acres purchased for \$14MM with plans to develop a townhome project.



300 E SECOND ST
SUBJECT PROPERTY

NEW RENO POLICE DEPARTMENT

114,500 sf new addition will double RPD's HQ



BALLPARK PROJECT

369 units, 117 Studios, 161 one bedroom and 91 two bedroom units



NEON LINE DISTRICT

Jacobs Entertainment revitalization of Reno's West 4th Street corridor



RENO CITY CENTER

530 units, 78,500 sf of retail & 150,000 sf of office space



N

DOWNTOWN INFILL DEVELOPMENTS

PINE STREET TOWNHOMES

49 three-story unit tentative map with garage



CAL AVE STUDIOS

36 luxury units with modern design



CENTER & PINE LOFTS

24 High-end lofts above Pine State Biscuits



RIVERSIDE APARTMENTS

34 units with ground level parking and retail space



EDEN TOWERS

4-stories with 34-units



HIGH STREET TOWNHOMES

16 modern spacious units



MOD 2

69 units, five-stories



300 E SECOND ST
SUBJECT PROPERTY

602 KUENZLI STREET

9 units with commercial space



RIVERBOAT HOTEL APARTMENTS

105 studio units, one and two-bedroom units



661 LAKE STREET

475 unit student housing, 13-stories, including 5-story parking garage & 4,000 sf retail space



CANYON FLATS

158 units accommodating up to 508 students



PARK PLACE

Five-story building with 762 beds within 267 units

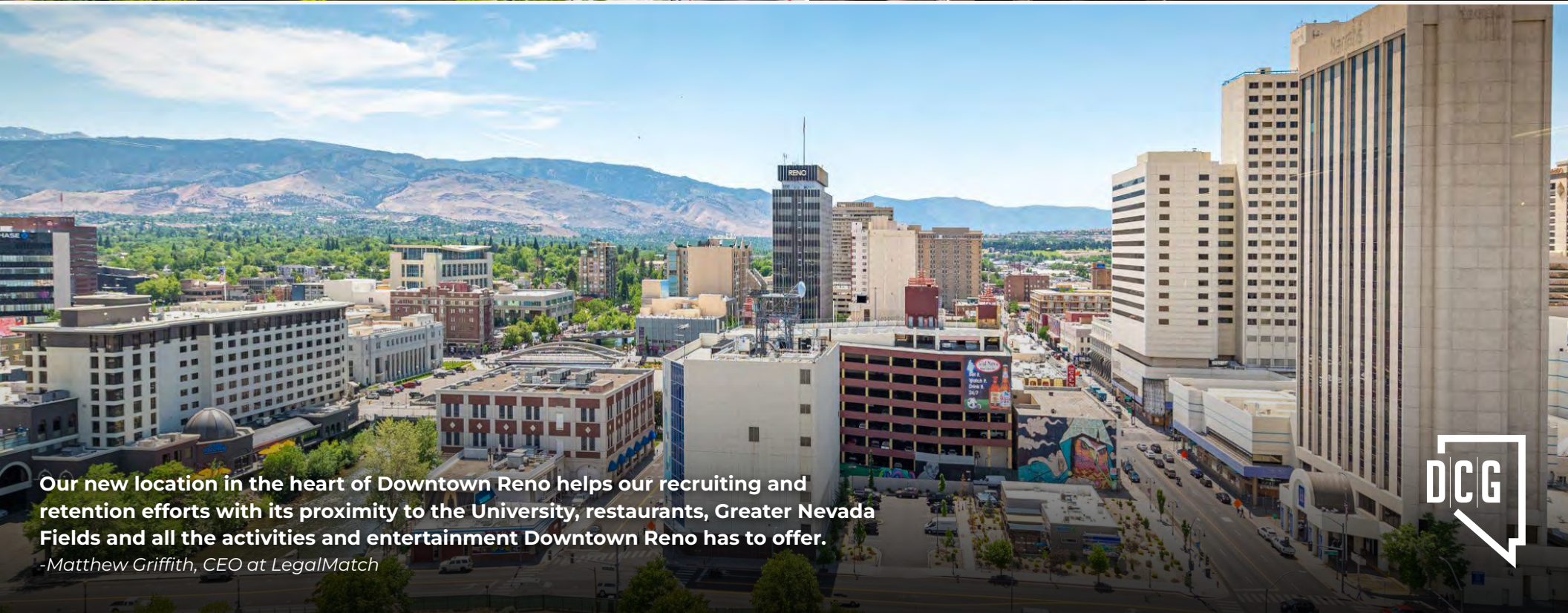


N





 **BASIN STREET**
PROPERTIES EST. 1974



Our new location in the heart of Downtown Reno helps our recruiting and retention efforts with its proximity to the University, restaurants, Greater Nevada Fields and all the activities and entertainment Downtown Reno has to offer.

-Matthew Griffith, CEO at LegalMatch

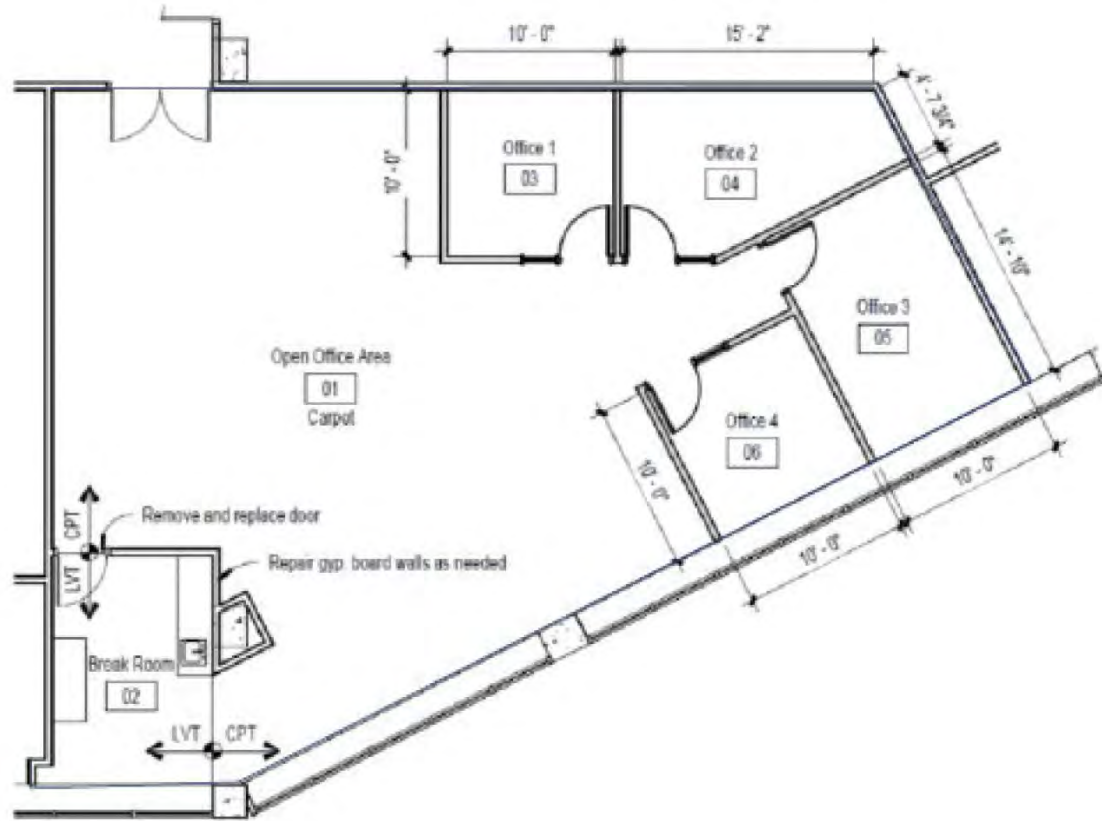


FLOOR PLAN

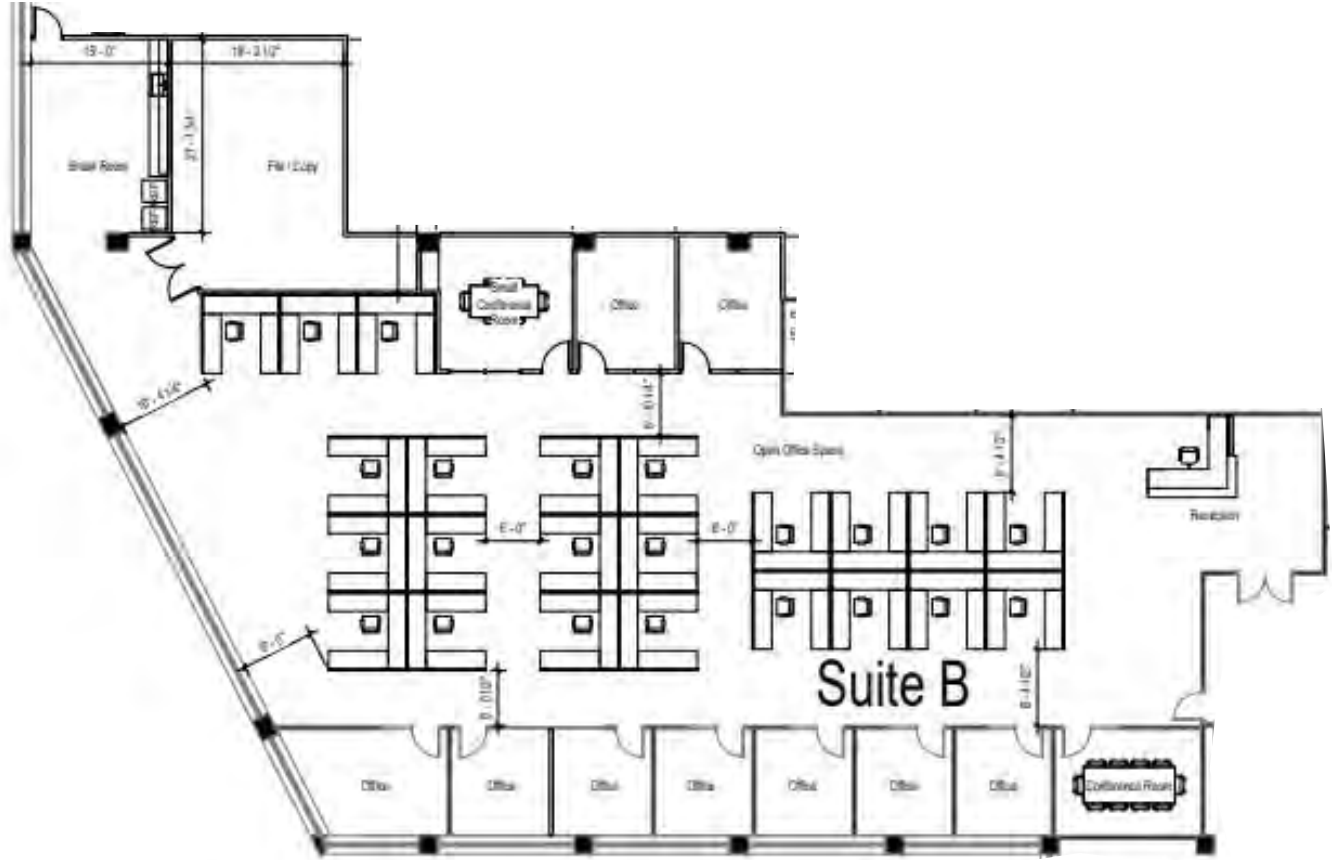
Suite 1230 | 2,512 RSF

Lease Rate | Negotiable

Available | 06/01/2026



FLOOR PLAN
Suite 1400 | 9,105 sf



FLOOR PLAN

Suite 1510 | 17,195 sf

