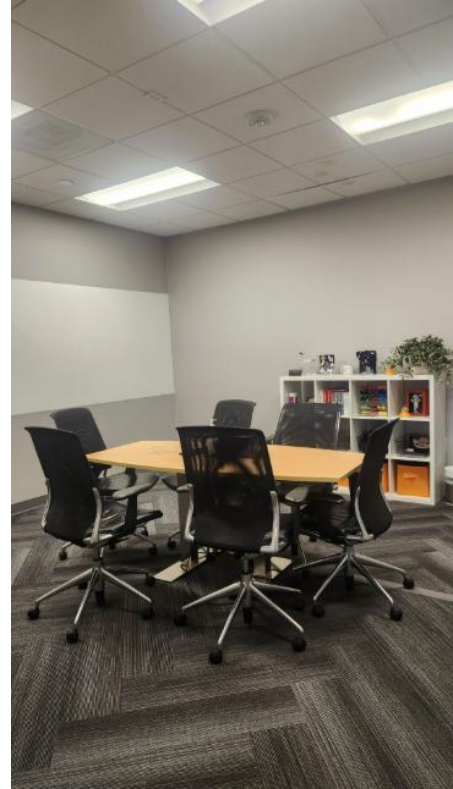


**FOR SUBLEASE - \$3.50 FS**

**Main Street Cupertino, CA**

**19409 Stevens Creek #250**

**±2,017SF | LED 6/30/2027 | Class A Office**



### Property Highlights

- ±2,017 SF
- Class “A” Office – furniture available
- Prime Main St Cupertino location
- High end finishes and natural light
- 1 Large and 1 Medium conference rooms
- Open office with kitchenette
- Abundant retail and restaurants onsite



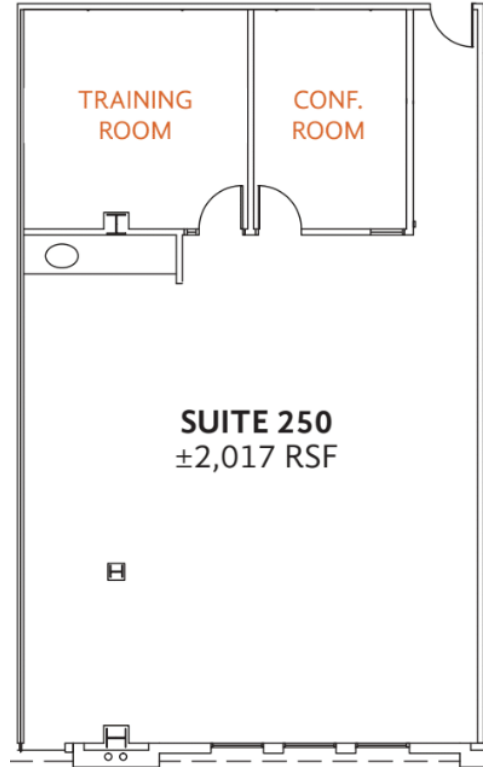
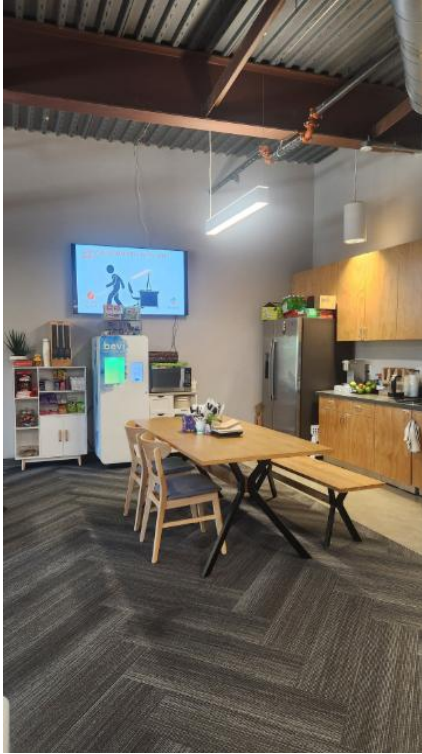
5201 Great America Pkwy, Suite 455  
Santa Clara, California 95054  
Main +1 408 656 7683 | Fax +1 408 350 8369  
[www.s5cre.com](http://www.s5cre.com)

Shelley Sakhua  
+1 408-917-8405  
[shelley@s5cre.com](mailto:shelley@s5cre.com)  
Lic #02166704

Nathan Rodriguez  
+1 559-707-3265  
[nathan@s5cre.com](mailto:nathan@s5cre.com)  
Lic #02214957

S5 Advisory Copyright 2025. The information contained herein was lawfully obtained from sources we consider reliable. S5 Advisory is not responsible and expressly disclaims all liability, for errors, commissions, prior sales, withdrawal from market or change in price. Seller (or Lessor, as the case may be) and broker make no representation as to the environmental condition of the property and recommend Purchaser's (or Lessee's) independent investigation.

**FOR SUBLEASE - \$3.50 FS**  
**Main Street Cupertino, CA**  
**19409 Stevens Creek #250**  
±2,017SF | LED 6/30/2027 | Class A Office



5201 Great America Pkwy, Suite 455  
Santa Clara, California 95054  
Main +1 408 656 7683 | Fax +1 408 350 8369  
www.s5cre.com

Shelley Sakhua  
+1 408-917-8405  
shelley@s5cre.com  
Lic #02166704

Nathan Rodriguez  
+1 559-707-3265  
nathan@s5cre.com  
Lic #02214957

S5 Advisory Copyright 2025. The information contained herein was lawfully obtained from sources we consider reliable. S5 Advisory is not responsible and expressly disclaims all liability, for errors, commissions, prior sales, withdrawal from market or change in price. Seller (or Lessor, as the case may be) and broker make no representation as to the environmental condition of the property and recommend Purchaser's (or Lessee's) independent investigation.