

**FOR LEASE**

Owned and Operated by  **LINK**

# 1502 N. 25TH AVE. | SUITE C

1502 N. 25th Ave., Melrose Park, IL

**±52,319 SF**



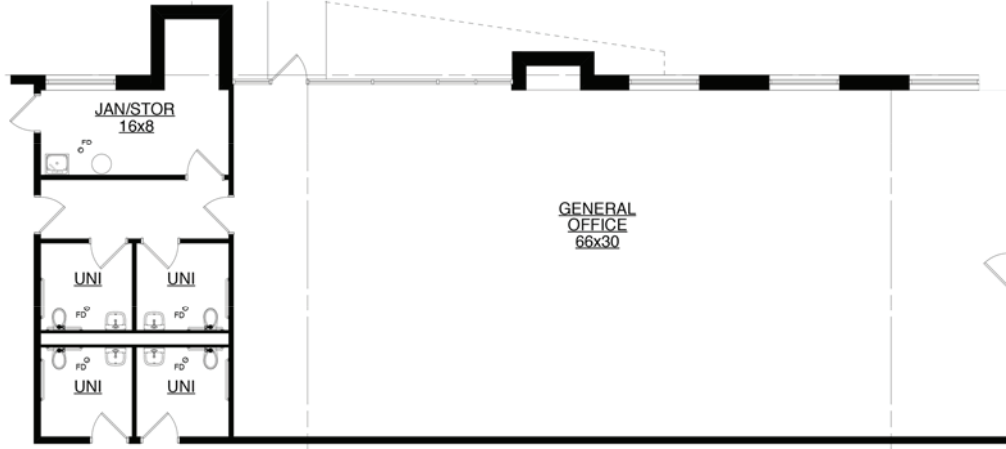
**LEASING INFO  
& CONTACT**

Sam Durkin    Senior Managing Director    (773) 343-4361 / [sam.durkin@jll.com](mailto:sam.durkin@jll.com)

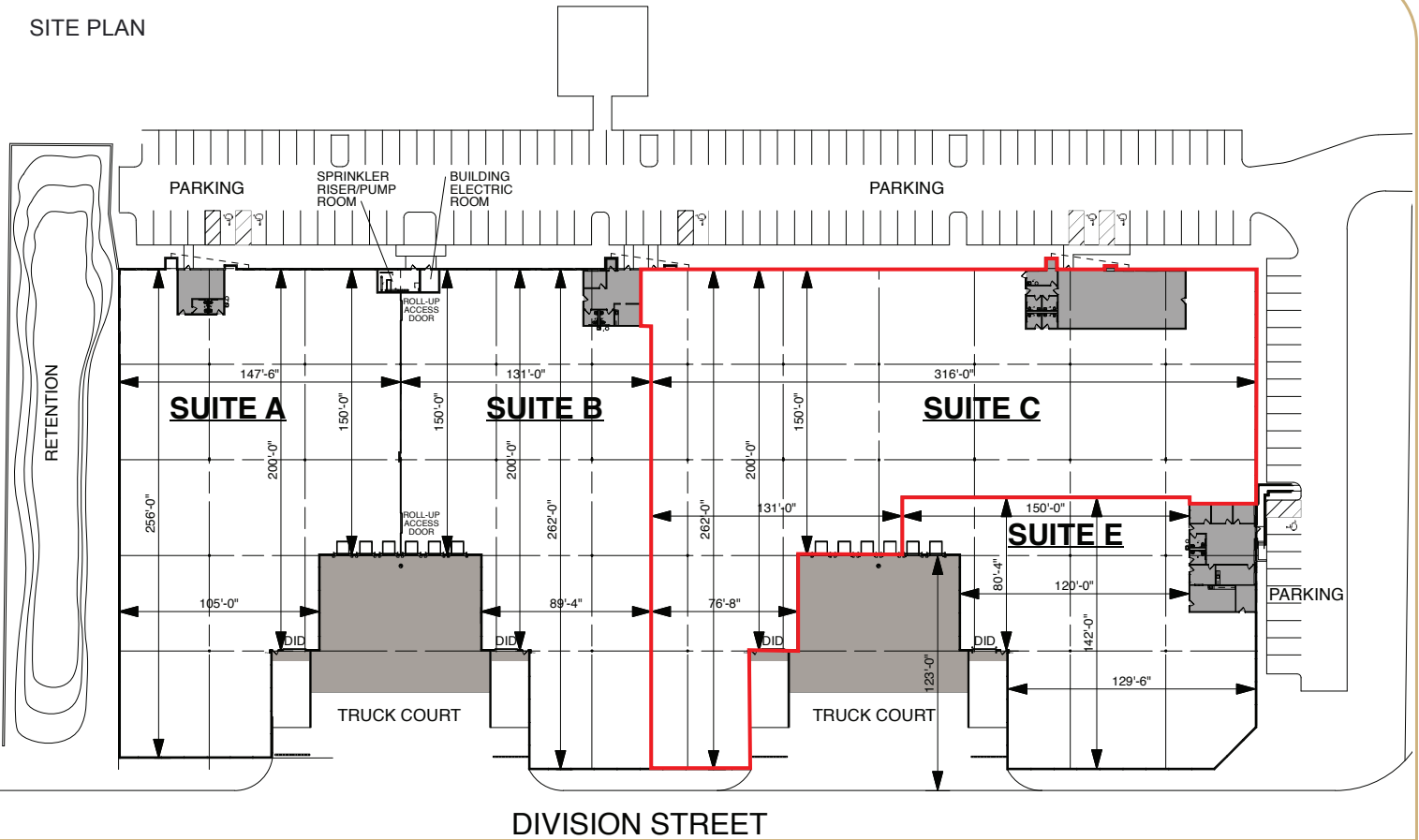


This is not an offer or acceptance of an offer to lease space. A lease will only be offered or made in a written agreement signed by landlord. No representation or warranty of any kind is made by landlord unless set forth in a written definitive lease executed by the landlord.

SUITE C | OFFICE



SITE PLAN



SUITE C DETAILS AND HIGHLIGHTS

Suite C Size	52,319 SF
Warehouse Size	49,649 SF
Office Size	2,670 SF
Loading Docks	4 exterior docks
Drive-in Doors	1 drive-in door

Clear Height	28'
Column Spacing	50' x 50'
Building Parking	140 car parking stalls
Unit Parking	Pro Rata Share
Sprinkler	ESFR



## LOCATION HIGHLIGHTS

I-290/I-294 via North Ave	3 miles
O'Hare International Airport	7 miles
Downtown Chicago	14 miles
Midway International Airport	15 miles

