



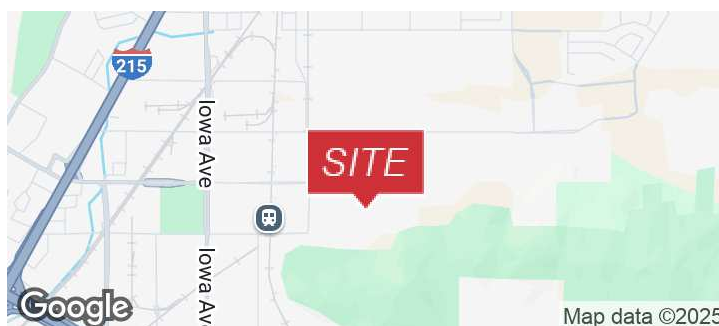
1451 RESEARCH PARK DR RIVERSIDE, CALIFORNIA 92507

Property Highlights

- Strong Office/R&D location
- Existing lobby, conference room, 6 offices & multi-stalled restrooms
- Pride of Ownership
- Stable Co-Tenants
- Riverside developing area at the intersection of Iowa and Columbia Ave

OFFERING SUMMARY

Lease Rate:	\$2.25 SF/month (MG)
Building Size:	10,964 SF
Available SF:	2,600 SF



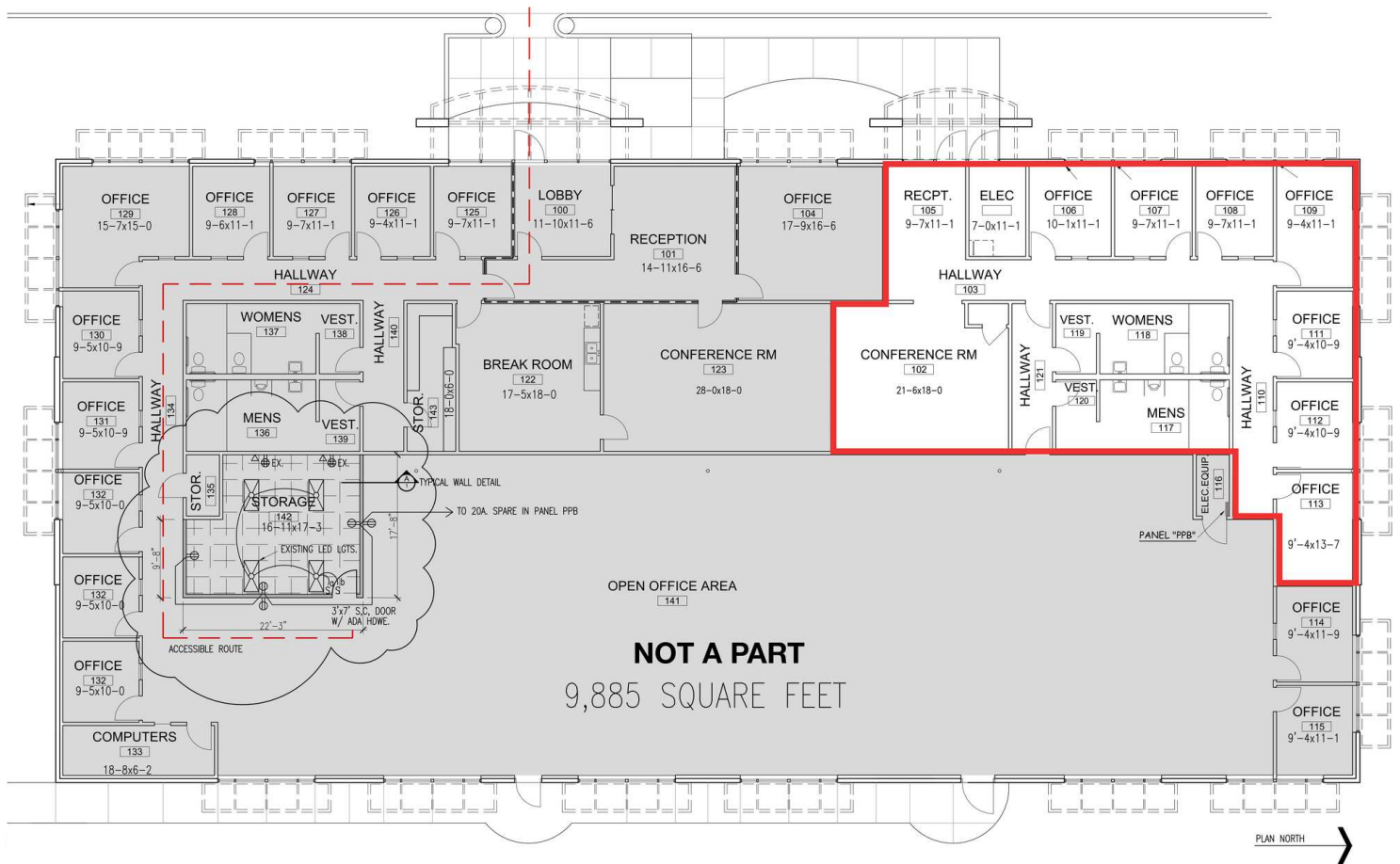
Vicki R. Donkin

Senior Vice President
909.243.7611
vdonkin@naicapital.com
CA DRE #00829449

Dawn Lowder

Vice President
909.243.7616
dawnlowder@naicapital.com
CA DRE #00380377

No warranty, express or implied, is made as to the accuracy of the information contained herein. This information is submitted subject to errors, omissions, change of price, rental or other conditions, withdrawal without notice, and is subject to any special listing conditions imposed by our principals. Cooperating brokers, buyers, tenants and other parties who receive this document should not rely on it, but should use it as a starting point of analysis, and should independently confirm the accuracy of the information contained herein through a due diligence review of the books, records, files and documents that constitute reliable sources of the information described herein. Logos are for identification purposes only and may be trademarks of their respective companies. NAI Capital Commercial, Inc. CAL DRE Lic. #02130474



Vicki R. Donkin

Senior Vice President

909.243.7611

vdonkin@naicapital.com

CA DRE #00829449

Dawn Lowder

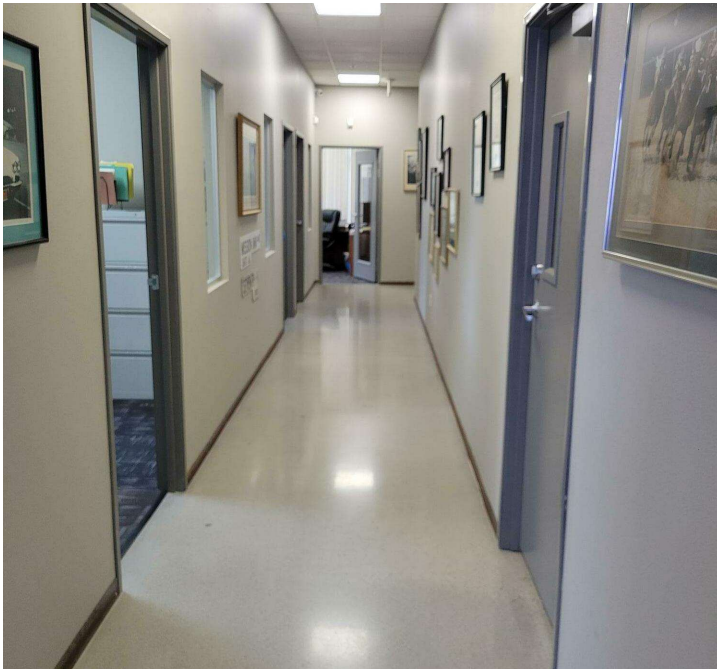
Vice President

909.243.7616

dawnlowder@naicapital.com

CA DRE #00380377

No warranty, express or implied, is made as to the accuracy of the information contained herein. This information is submitted subject to errors, omissions, change of price, rental or other conditions, withdrawal without notice, and is subject to any special listing conditions imposed by our principals. Cooperating brokers, buyers, tenants and other parties who receive this document should not rely on it, but should use it as a starting point of analysis, and should independently confirm the accuracy of the information contained herein through a due diligence review of the books, records, files and documents that constitute reliable sources of the information described herein. Logos are for identification purposes only and may be trademarks of their respective companies. NAI Capital Commercial, Inc. CAL DRE Lic. #02130474



Vicki R. Donkin

Senior Vice President
909.243.7611
vdonkin@naicapital.com
CA DRE #00829449

Dawn Lowder

Vice President
909.243.7616
dawnlowder@naicapital.com
CA DRE #00380377

No warranty, express or implied, is made as to the accuracy of the information contained herein. This information is submitted subject to errors, omissions, change of price, rental or other conditions, withdrawal without notice, and is subject to any special listing conditions imposed by our principals. Cooperating brokers, buyers, tenants and other parties who receive this document should not rely on it, but should use it as a starting point of analysis, and should independently confirm the accuracy of the information contained herein through a due diligence review of the books, records, files and documents that constitute reliable sources of the information described herein. Logos are for identification purposes only and may be trademarks of their respective companies. NAI Capital Commercial, Inc. CAL DRE Lic. #02130474