

COCCA DEVELOPMENT

RETAIL SPACE FOR LEASE

1021 VIRGINIA TRAIL

WELCH, WV 24801



- Join Family Dollar, Pizza Hut, and Advance Auto in newly constructed plaza adjacent to Sav-a-Lot
- Wide frontage on tenant space with ample parking and tenant sign
- Access to Route 52 over bridge

AVAILABLE SUITE AREA—\$12/square foot NNN:

Approximately 5,767 square feet*

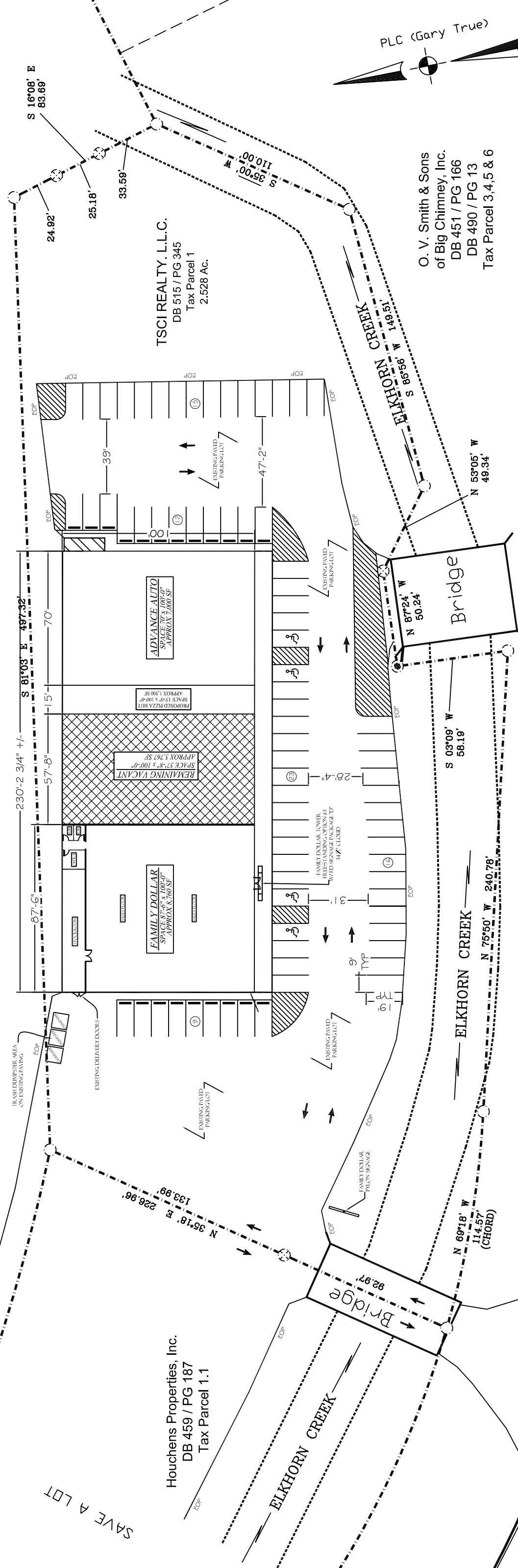
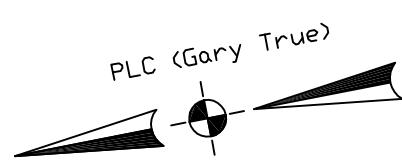
*Can be reduced for smaller space per needs

NNN: Base rent plus prorata share of Real Estate Taxes, Insurance, and Common Area expenses, including but not limited to snow removal, lawn care, and parking lot maintenance. Tenant pays separately metered utilities for gas, electric, water, sewer, & trash removal.

CALL 330-729-1010 FOR MORE INFORMATION

www.coccadevelopment.com

MAIN LINE OF NORFOLK SOUTHERN RAILWAY



TSCI REALTY, L.L.C.
DB 515 / PG 345
Tax Parcel 1
2.528 Ac.

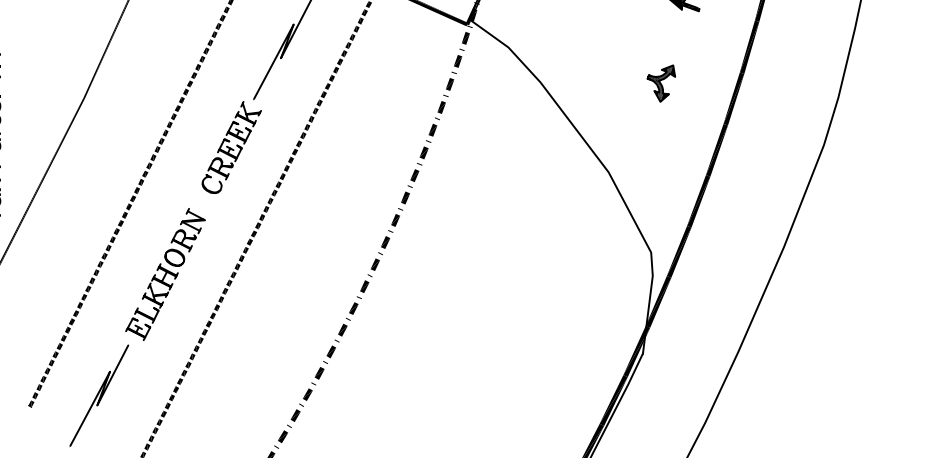
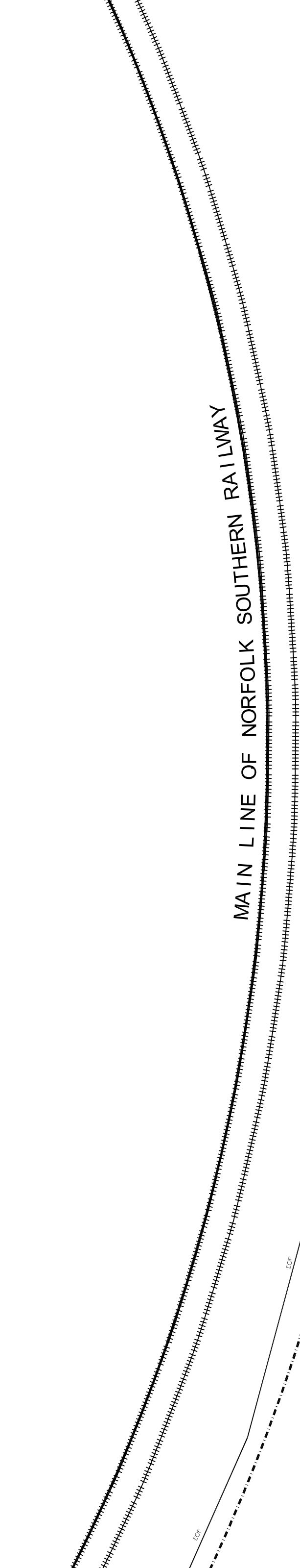
O. V. Smith & Sons
of Big Chimney, Inc.
DB 451 / PG 166
DB 490 / PG 13
Tax Parcel 3,4,5 & 6

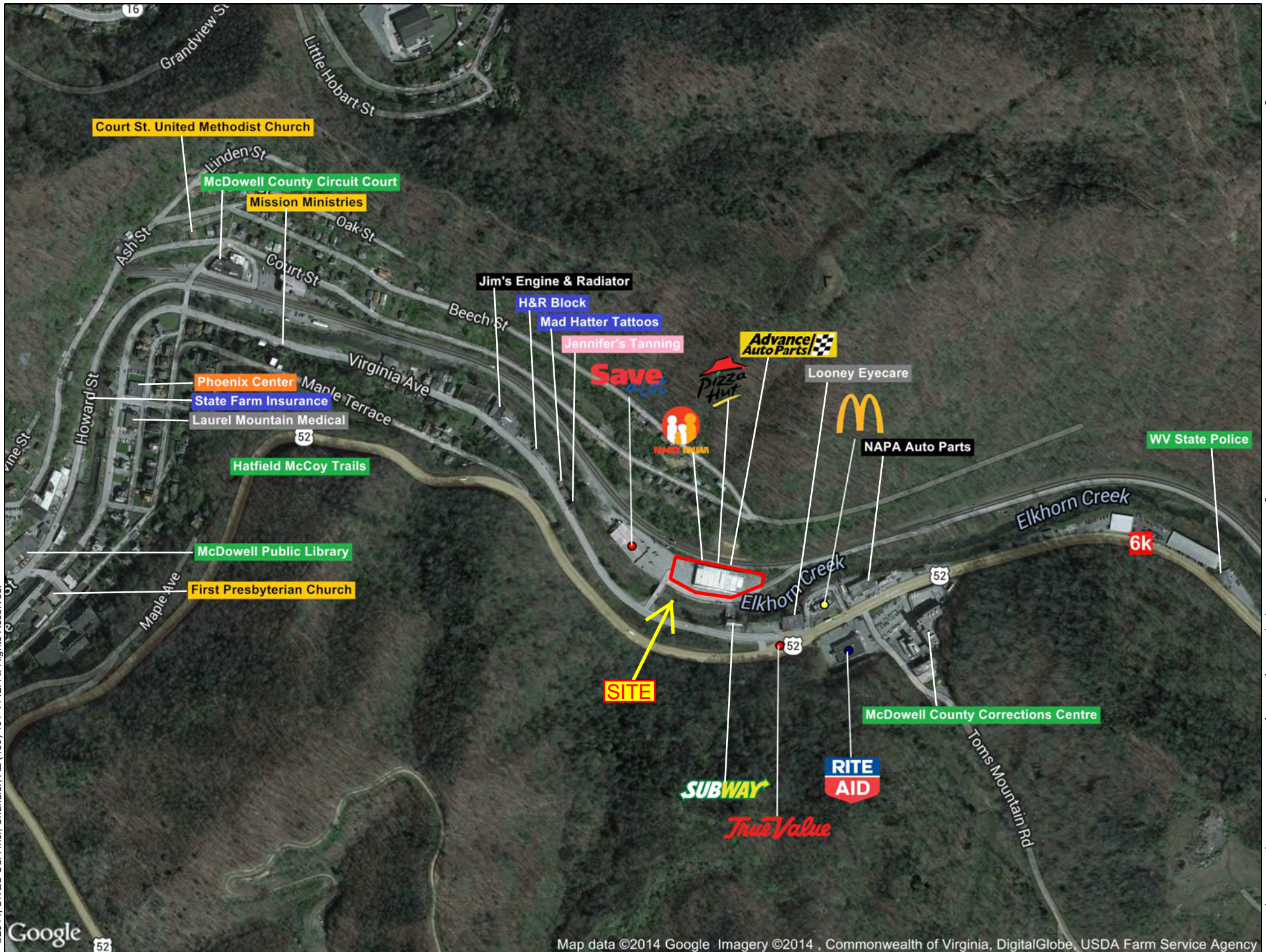
Vega, Louis A. & Carmen
DB 451 / PG 698
Tax Parcel 2

Houchens Properties, Inc.
DB 459 / PG 187
Tax Parcel 1.1

SAVE A LOT

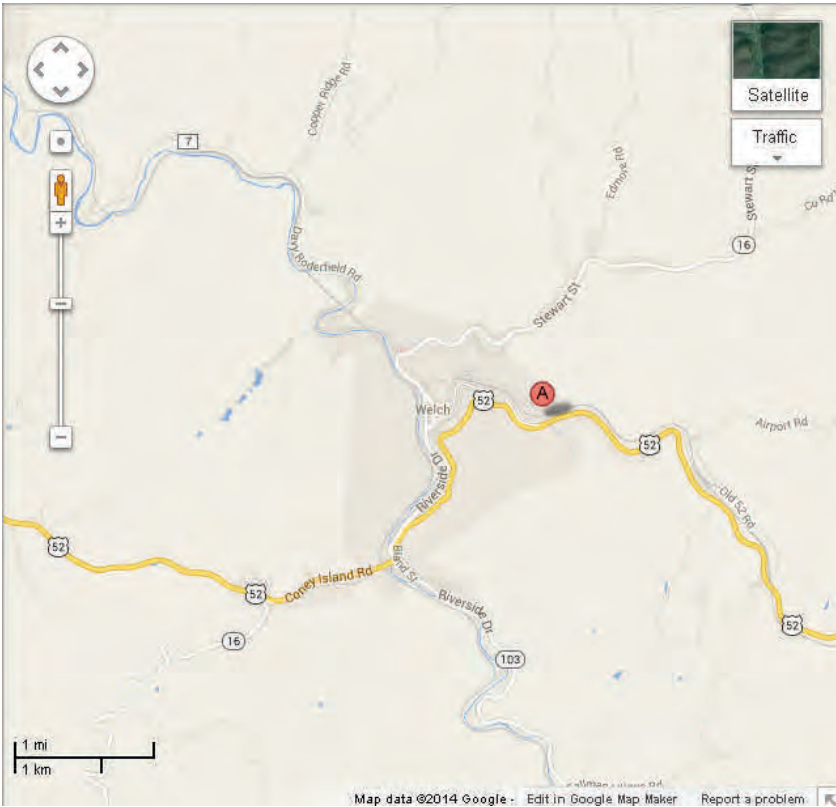
ROUTE 52





1021 Virginia Trail

Welch, WV 24801



The site is ideally located on Virginia Trail in McDowell County, approximately 37 miles west of Princeton.

Welch is the county seat of McDowell County.

The average daily traffic count on Virginia Trail in front of the center is approximately

6,000.

The area has a history in coal mining and railroad activity. It was still ranked #1 in the US in total coal production in 1960, and it proclaimed itself “The Heart of the Nation’s Coal Bin.”

It is the celebrated location of an annual Veteran’s Day Parade.



COCCA DEVELOPMENT, LTD

1021 Virginia Trail

Welch, WV 24801

AT A GLANCE

- ◆ Located approximately 37 miles west of Princeton, Welch is in McDowell County. Incorporated as a city in 1893, it is the county seat of McDowell County
- ◆ Named after Isaiah A. Welch, a former captain in the Confederate Army who came to the region as a surveyor and helped establish the plan for the beginning of a new town at the confluence of the Tug and Elkhorn rivers
- ◆ Declared a state by President Abraham Lincoln, West Virginia is the only state to be designated by Presidential Proclamation
- ◆ Welch built the first municipally owned parking building in the United States , which was opened September 1, 1941 and accommodated 232 cars.

GRAPHIC PROFILE

2000-2010 Census, 2014 Estimates with 2019 Projections

Calculated using Proportional Block Groups

Lat/Lon: 37.4344/-81.5761

RGRAP3

1021 Virginia Avenue

Welch, WV

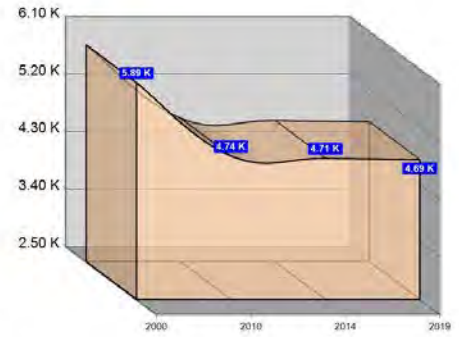
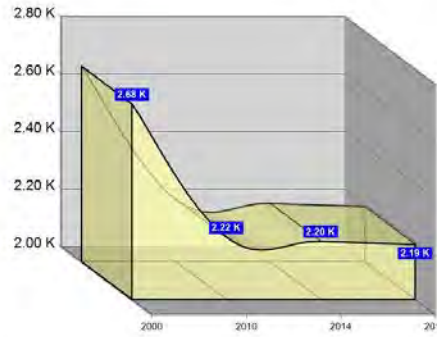
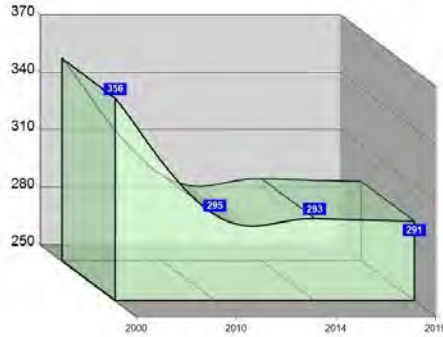
1 Mile

3 Miles

5 Miles

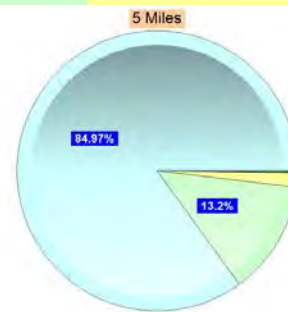
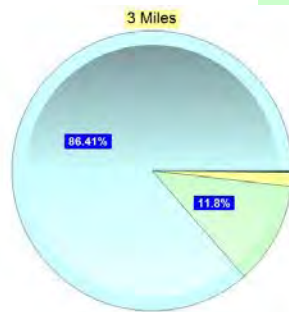
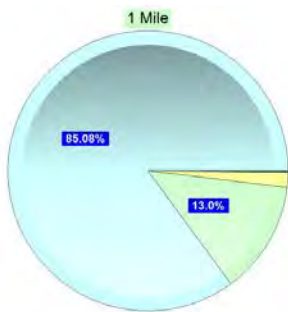
Population

Estimated Population (2014)	293	2,202	4,710
Projected Population (2019)	291	2,191	4,686
Census Population (2010)	295	2,216	4,742
Census Population (2000)	356	2,680	5,895
Projected Annual Growth (2014-2019)	-1 -0.1%	-11 -0.1%	-24 -0.1%
Historical Annual Growth (2010-2014)	-2 -5.2%	-14 -5.2%	-32 -6.1%
Historical Annual Growth (2000-2010)	-61 -1.7%	-464 -1.7%	-1,152 -2.0%
Estimated Population Density (2014)	93 <i>psm</i>	78 <i>psm</i>	60 <i>psm</i>
Trade Area Size	3.1 <i>sq mi</i>	28.3 <i>sq mi</i>	78.5 <i>sq mi</i>



Race and Ethnicity (2014)

Not Hispanic or Latino Population	290	99.2%	2,185	99.2%	4,675	99.3%
White	247	85.0%	1,888	86.4%	3,973	85.0%
Black or African American	38	13.1%	260	11.9%	618	13.2%
American Indian or Alaska Native	-	0.1%	1	0.1%	4	0.1%
Asian	-	-	1	-	2	-
Hawaiian or Pacific Islander	-	-	-	-	-	-
Other Race	-	-	-	-	2	-
Two or More Races	5	1.7%	36	1.6%	76	1.6%
Hispanic or Latino Population	2	0.8%	17	0.8%	35	0.7%
White	2	88.9%	15	88.0%	29	84.1%
Black or African American	-	-	-	-	1	3.6%
American Indian or Alaska Native	-	-	-	-	-	0.2%
Asian	-	-	-	-	-	-
Hispanic Hawaiian or Pacific Islander	-	-	-	-	-	-
Other Race	-	10.1%	2	9.1%	3	8.0%
Two or More Races	-	0.9%	1	3.0%	1	4.1%



White Black or African American American Indian or Alaska Native Asian Hawaiian or Pacific Islander Other Race 2+ Races

This report was produced using data from private and government sources deemed to be reliable. The information herein is provided without representation or warranty.

GRAPHIC PROFILE

2000-2010 Census, 2014 Estimates with 2019 Projections

Calculated using Proportional Block Groups

Lat/Lon: 37.4344/-81.5761

RGRAP3

1021 Virginia Avenue

Welch, WV

1 Mile

3 Miles

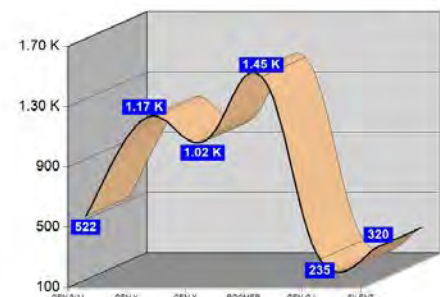
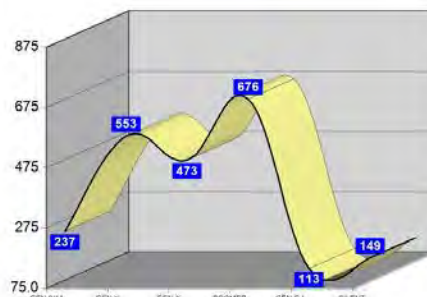
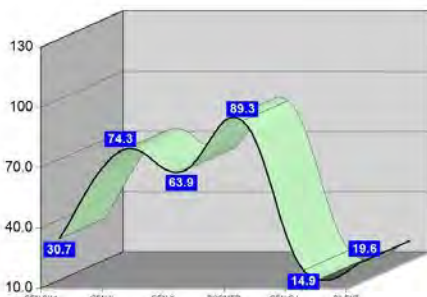
5 Miles

Age Distribution (2014)

Age Group	1 Mile	3 Miles	5 Miles
Age Under 5 Years	17 5.8%	130 5.9%	285 6.0%
Age 5 to 9 Years	14 4.7%	107 4.9%	237 5.0%
Age 10 to 14 Years	13 4.5%	102 4.7%	227 4.8%
Age 15 to 19 Years	13 4.3%	96 4.4%	211 4.5%
Age 20 to 24 Years	18 6.1%	129 5.9%	276 5.9%
Age 25 to 29 Years	20 6.9%	145 6.6%	303 6.4%
Age 30 to 34 Years	20 6.9%	150 6.8%	314 6.7%
Age 35 to 39 Years	19 6.6%	141 6.4%	296 6.3%
Age 40 to 44 Years	18 6.0%	134 6.1%	283 6.0%
Age 45 to 49 Years	17 5.9%	129 5.8%	275 5.8%
Age 50 to 54 Years	23 8.0%	174 7.9%	360 7.6%
Age 55 to 59 Years	26 8.7%	192 8.7%	421 8.9%
Age 60 to 64 Years	24 8.1%	182 8.2%	393 8.3%
Age 65 to 69 Years	17 5.8%	128 5.8%	276 5.9%
Age 70 to 74 Years	12 4.0%	88 4.0%	188 4.0%
Age 75 to 79 Years	8 2.7%	61 2.8%	132 2.8%
Age 80 to 84 Years	8 2.9%	66 3.0%	129 2.7%
Age 85 Years or Over	6 2.2%	48 2.2%	106 2.2%
Median Age	42.6	42.9	42.8

Generation (2014)

Generation	1 Mile	3 Miles	5 Miles
Generation 9/11 Millennials (Age Under 10 Years)	31 10.5%	237 10.8%	522 11.1%
Gen Y to Echo Boomers (Age 10 to 29 Years)	64 21.8%	473 21.5%	1,016 21.6%
Gen Xers (Age 30 to 49 Years)	74 25.4%	553 25.1%	1,168 24.8%
Baby Boomers (Age 50 to 69 Years)	89 30.5%	676 30.7%	1,449 30.8%
Silent Generation (Age 70 to 79 Years)	20 6.7%	149 6.8%	320 6.8%
G.I. Generation (Age 80 Years or Over)	15 5.1%	113 5.1%	235 5.0%



This report was produced using data from private and government sources deemed to be reliable. The information herein is provided without representation or warranty.

GRAPHIC PROFILE

2000-2010 Census, 2014 Estimates with 2019 Projections

Calculated using Proportional Block Groups

Lat/Lon: 37.4344/-81.5761

RGRAP3

1021 Virginia Avenue

Welch, WV

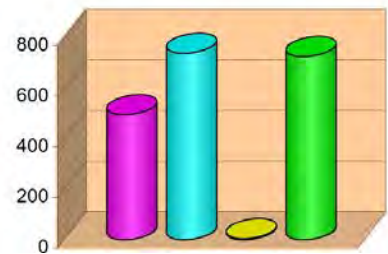
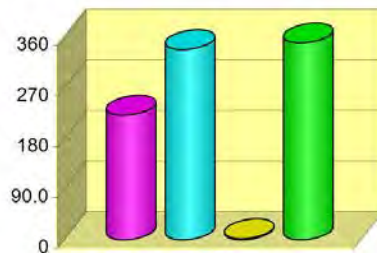
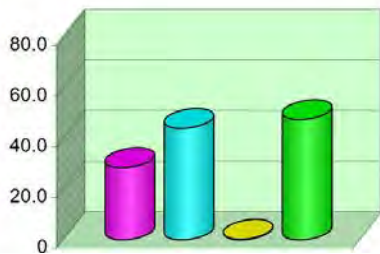
1 Mile

3 Miles

5 Miles

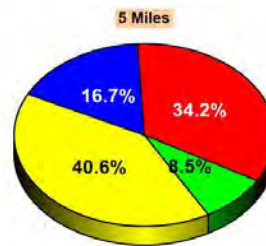
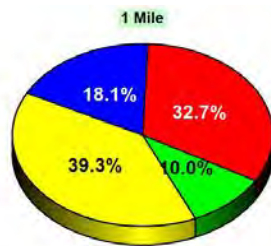
Household Type (2014)

	1 Mile	3 Miles	5 Miles
Total Households	120	912	1,963
Family Households	73 36.6%	560 37.1%	1,234 37.6%
Family Households with Children	29 39.3%	222 39.6%	495 40.1%
Family Households No Children	44 60.7%	338 60.4%	738 59.9%
Non-Family Households	48 36.6%	352 37.1%	730 37.6%
Non-Family Households with Children	- 0.5%	2 0.6%	4 0.6%
Non-Family Households No Children	48 99.5%	350 99.4%	726 99.4%



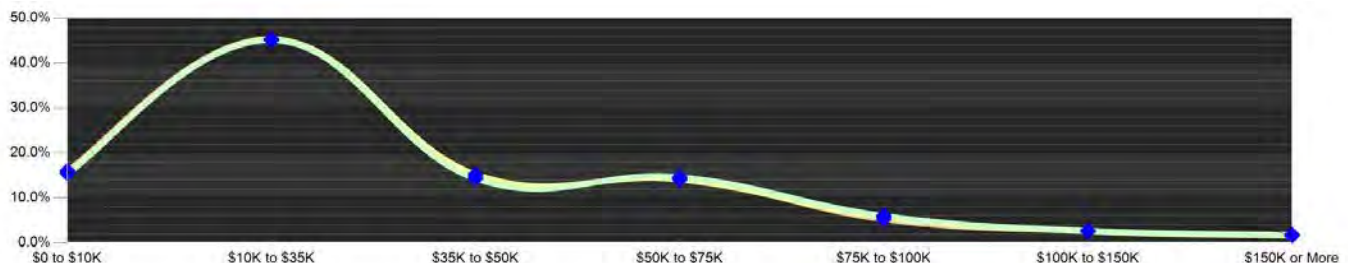
Education Attainment (2014)

	1 Mile	3 Miles	5 Miles
Elementary or Some High School	63 32.7%	508 34.6%	1,090 34.2%
High School Graduate	75 39.3%	581 39.5%	1,293 40.6%
Some College or Associate Degree	35 18.1%	249 17.0%	533 16.7%
Bachelor or Graduate Degree	19 10.0%	131 8.9%	271 8.5%



Household Income (2014)

	1 Mile	3 Miles	5 Miles
Estimated Average Household Income	\$36,356	\$35,304	\$34,637
Estimated Median Household Income	\$26,139	\$26,385	\$26,002
HH Income Under \$10,000	19 15.4%	141 15.5%	316 16.1%
HH Income \$10,000 to \$34,999	54 45.1%	413 45.3%	891 45.4%
HH Income \$35,000 to \$49,999	17 14.3%	139 15.3%	287 14.6%
HH Income \$50,000 to \$74,999	18 14.6%	128 14.1%	284 14.4%
HH Income \$75,000 to \$99,999	3 2.7%	23 2.5%	52 2.6%
HH Income \$100,000 to \$149,999	3 2.7%	23 2.5%	52 2.6%
HH Income \$150,000 or More	2 1.8%	14 1.6%	31 1.6%



This report was produced using data from private and government sources deemed to be reliable. The information herein is provided without representation or warranty.

EXPANDED PROFILE

2000-2010 Census, 2014 Estimates with 2019 Projections

Calculated using Proportional Block Groups

Lat/Lon: 37.4344/-81.5761

RF5

1021 Virginia Avenue Welch, WV	1 Mile	3 Miles	5 Miles
Population			
Estimated Population (2014)	293	2,202	4,710
Projected Population (2019)	291	2,191	4,686
Census Population (2010)	295	2,216	4,742
Census Population (2000)	356	2,680	5,895
Projected Annual Growth (2014 to 2019)	-1 -0.1%	-11 -0.1%	-24 -0.1%
Historical Annual Growth (2010 to 2014)	-2 -0.2%	-14 -0.2%	-32 -0.2%
Historical Annual Growth (2000 to 2010)	-61 -1.7%	-464 -1.7%	-1,152 -2.0%
Estimated Population Density (2014)	93 <i>psm</i>	78 <i>psm</i>	60 <i>psm</i>
Trade Area Size	3.14 <i>sq mi</i>	28.26 <i>sq mi</i>	78.49 <i>sq mi</i>
Households			
Estimated Households (2014)	120	912	1,963
Projected Households (2019)	120	908	1,956
Census Households (2010)	120	909	1,956
Census Households (2000)	153	1,144	2,490
Estimated Households with Children (2014)	29 23.9%	224 24.5%	499 25.4%
Estimated Average Household Size (2014)	2.17	2.20	2.23
Average Household Income			
Estimated Average Household Income (2014)	\$38,580	\$37,251	\$36,812
Projected Average Household Income (2019)	\$42,707	\$41,326	\$40,700
Estimated Average Family Income (2014)	\$48,530	\$46,695	\$44,826
Median Household Income			
Estimated Median Household Income (2014)	\$26,780	\$26,805	\$26,808
Projected Median Household Income (2019)	\$29,787	\$29,861	\$29,692
Estimated Median Family Income (2014)	\$38,762	\$37,904	\$36,608
Per Capita Income			
Estimated Per Capita Income (2014)	\$17,369	\$16,694	\$16,368
Projected Per Capita Income (2019)	\$19,245	\$18,540	\$18,127
Estimated Per Capita income 5 Year Growth	\$1,876 10.8%	\$1,846 11.1%	\$1,759 10.7%
Estimated Average Household Net Worth (2014)	\$236,634	\$230,494	\$229,542
Daytime Demos (2014)			
Total Businesses	19	122	210
Total Employees	208	1,404	2,243
Company Headquarter Businesses	- 1.3%	2 1.3%	3 1.5%
Company Headquarter Employees	8 3.8%	50 3.6%	94 4.2%
Employee Population per Business	11.2	11.5	10.7
Residential Population per Business	15.8	18.0	22.5

This report was produced using data from private and government sources deemed to be reliable. The information herein is provided without representation or warranty.

EXPANDED PROFILE

2000-2010 Census, 2014 Estimates with 2019 Projections

Calculated using Proportional Block Groups

Lat/Lon: 37.4344/-81.5761

RF5

1021 Virginia Avenue

Welch, WV

Race & Ethnicity

	1 Mile		3 Miles		5 Miles	
White (2014)	249	85.1%	1,903	86.4%	4,002	85.0%
Black or African American (2014)	38	13.0%	260	11.8%	619	13.2%
American Indian or Alaska Native (2014)	-	0.1%	1	0.1%	4	0.1%
Asian (2014)	-	-	1	-	2	-
Hawaiian or Pacific Islander (2014)	-	-	-	-	-	-
Other Race (2014)	-	0.1%	2	0.1%	5	0.1%
Two or More Races (2014)	5	1.7%	36	1.6%	77	1.6%
Not Hispanic or Latino Population (2014)	290	99.2%	2,185	99.2%	4,675	99.3%
Hispanic or Latino Population (2014)	2	0.8%	17	0.8%	35	0.7%
Not Hispanic or Latino Population (2019)	289	99.1%	2,172	99.1%	4,647	99.2%
Hispanic or Latino Population (2019)	3	0.9%	19	0.9%	39	0.8%
Not Hispanic or Latino Population (2010)	292	99.2%	2,201	99.3%	4,711	99.3%
Hispanic or Latino Population (2010)	2	0.8%	15	0.7%	31	0.7%
Not Hispanic or Latino Population (2000)	353	99.2%	2,659	99.2%	5,853	99.3%
Hispanic or Latino Population (2000)	3	0.8%	21	0.8%	41	0.7%
Projected Hispanic Annual Growth (2014 to 2019)	-	2.4%	2	2.7%	4	2.3%
Historic Hispanic Annual Growth (2000 to 2014)	-1	-1.3%	-4	-1.3%	-7	-1.2%

Age Distribution (2014)

	1 Mile		3 Miles		5 Miles	
Age Under 5	17	5.8%	130	5.9%	285	6.0%
Age 5 to 9 Years	14	4.7%	107	4.9%	237	5.0%
Age 10 to 14 Years	13	4.5%	102	4.7%	227	4.8%
Age 15 to 19 Years	13	4.3%	96	4.4%	211	4.5%
Age 20 to 24 Years	18	6.1%	129	5.9%	276	5.9%
Age 25 to 29 Years	20	6.9%	145	6.6%	303	6.4%
Age 30 to 34 Years	20	6.9%	150	6.8%	314	6.7%
Age 35 to 39 Years	19	6.6%	141	6.4%	296	6.3%
Age 40 to 44 Years	18	6.0%	134	6.1%	283	6.0%
Age 45 to 49 Years	17	5.9%	129	5.8%	275	5.8%
Age 50 to 54 Years	23	8.0%	174	7.9%	360	7.6%
Age 55 to 59 Years	26	8.7%	192	8.7%	421	8.9%
Age 60 to 64 Years	24	8.1%	182	8.2%	393	8.3%
Age 65 to 74 Years	28	9.7%	215	9.8%	464	9.8%
Age 75 to 84 Years	16	5.6%	127	5.8%	261	5.5%
Age 85 Years or Over	6	2.2%	48	2.2%	106	2.2%
Median Age	42.6		42.9		42.8	

Gender Age Distribution (2014)

	1 Mile		3 Miles		5 Miles	
Female Population	142	48.6%	1,082	49.1%	2,314	49.1%
Age 0 to 19 Years	29	20.6%	225	20.8%	478	20.7%
Age 20 to 64 Years	83	58.6%	635	58.6%	1,363	58.9%
Age 65 Years or Over	30	20.8%	222	20.6%	472	20.4%
Female Median Age	46.2		45.9		45.9	
Male Population	151	51.4%	1,120	50.9%	2,396	50.9%
Age 0 to 19 Years	27	18.2%	211	18.8%	481	20.1%
Age 20 to 64 Years	101	67.4%	742	66.2%	1,557	65.0%
Age 65 Years or Over	22	14.5%	167	14.9%	359	15.0%
Male Median Age	40.1		40.7		40.4	

This report was produced using data from private and government sources deemed to be reliable. The information herein is provided without representation or warranty.

EXPANDED PROFILE

2000-2010 Census, 2014 Estimates with 2019 Projections

Calculated using Proportional Block Groups

Lat/Lon: 37.4344/-81.5761

RF5

1021 Virginia Avenue Welch, WV	1 Mile		3 Miles		5 Miles	
Household Income Distribution (2014)						
HH Income \$200,000 or More	1	0.9%	7	0.8%	16	0.8%
HH Income \$150,000 to \$199,999	1	0.9%	7	0.8%	16	0.8%
HH Income \$100,000 to \$149,999	3	2.7%	23	2.5%	52	2.6%
HH Income \$75,000 to \$99,999	7	6.0%	52	5.7%	103	5.2%
HH Income \$50,000 to \$74,999	18	14.6%	128	14.1%	284	14.4%
HH Income \$35,000 to \$49,999	17	14.3%	139	15.3%	287	14.6%
HH Income \$25,000 to \$34,999	16	12.9%	115	12.6%	247	12.6%
HH Income \$15,000 to \$24,999	29	24.2%	218	23.9%	460	23.4%
HH Income Under \$15,000	28	23.4%	221	24.3%	500	25.5%
HH Income \$35,000 or More	47	39.5%	358	39.2%	756	38.5%
HH Income \$75,000 or More	13	10.5%	90	9.9%	186	9.5%
Housing (2014)						
Total Housing Units	148		1,112		2,422	
Housing Units Occupied	120	81.1%	912	82.0%	1,963	81.1%
Housing Units Owner-Occupied	85	71.0%	660	72.4%	1,451	73.9%
Housing Units, Renter-Occupied	35	29.0%	252	27.6%	512	26.1%
Housing Units, Vacant	28	18.9%	200	18.0%	459	18.9%
Marital Status (2014)						
Never Married	74	29.6%	553	29.7%	1,172	29.6%
Currently Married	96	38.6%	717	38.5%	1,568	39.6%
Separated	14	5.8%	111	5.9%	226	5.7%
Widowed	33	13.2%	246	13.2%	504	12.7%
Divorced	32	12.7%	235	12.6%	491	12.4%
Household Type (2014)						
Population Family	201	68.8%	1,551	70.5%	3,426	72.7%
Population Non-Family	60	20.5%	451	20.5%	945	20.1%
Population Group Quarters	31	10.7%	199	9.1%	340	7.2%
Family Households	73	60.3%	560	61.4%	1,234	62.8%
Non-Family Households	48	39.7%	352	38.6%	730	37.2%
Married Couple with Children	17	17.8%	135	18.8%	295	18.8%
Average Family Household Size	2.8		2.8		2.8	
Household Size (2014)						
1 Person Households	43	36.0%	317	34.8%	652	33.2%
2 Person Households	40	33.1%	307	33.6%	675	34.4%
3 Person Households	19	15.7%	145	15.9%	316	16.1%
4 Person Households	12	9.6%	91	10.0%	201	10.3%
5 Person Households	4	3.5%	34	3.7%	79	4.0%
6 or More Person Households	3	2.2%	19	2.1%	40	2.0%
Household Vehicles (2014)						
Households with 0 Vehicles Available	22	18.2%	162	17.8%	354	18.0%
Households with 1 Vehicles Available	48	39.8%	373	40.9%	768	39.1%
Households with 2 or More Vehicles Available	51	42.0%	377	41.3%	842	42.9%
Total Vehicles Available	162		1,228		2,700	
Average Vehicles Per Household	1.3		1.3		1.4	

This report was produced using data from private and government sources deemed to be reliable. The information herein is provided without representation or warranty.

EXPANDED PROFILE

2000-2010 Census, 2014 Estimates with 2019 Projections

Calculated using Proportional Block Groups

Lat/Lon: 37.4344/-81.5761

RF5

1021 Virginia Avenue

Welch, WV

Labor Force (2014)

	1 Mile	3 Miles	5 Miles
Estimated Labor Population Age 16 Years or Over	214	1,639	3,573
Estimated Civilian Employed	68 31.6%	516 31.5%	1,128 31.6%
Estimated Civilian Unemployed	5 2.3%	37 2.3%	83 2.3%
Estimated in Armed Forces	- -	- -	- -
Estimated Not in Labor Force	141 66.0%	1,086 66.2%	2,362 66.1%
Unemployment Rate	2.3%	2.3%	2.3%

Occupation (2010)

	1 Mile	3 Miles	5 Miles
Occupation: Population Age 16 Years or Over	92	682	1,378
Management, Business, Financial Operations	17 18.7%	111 16.3%	214 15.6%
Professional, Related	22 24.3%	157 23.1%	317 23.0%
Service	20 22.1%	161 23.6%	290 21.1%
Sales, Office	13 13.7%	100 14.6%	228 16.5%
Farming, Fishing, Forestry	- 0.1%	1 0.2%	2 0.2%
Construct, Extraction, Maintenance	10 11.2%	78 11.4%	174 12.6%
Production, Transport Material Moving	9 9.8%	74 10.9%	152 11.1%
White Collar Workers	52 56.8%	368 54.0%	759 55.1%
Blue Collar Workers	40 43.2%	314 46.0%	619 44.9%

Consumer Expenditure (2014)

	1 Mile	3 Miles	5 Miles
Total Household Expenditure	\$4.45 M	\$33.0 M	\$70.5 M
Total Non-Retail Expenditure	\$2.53 M 56.8%	\$18.7 M 56.8%	\$40.0 M 56.8%
Total Retail Expenditure	\$1.92 M 43.2%	\$14.3 M 43.2%	\$30.5 M 43.2%
Apparel	\$212 K 4.8%	\$1.57 M 4.8%	\$3.36 M 4.8%
Contributions	\$152 K 3.4%	\$1.12 M 3.4%	\$2.40 M 3.4%
Education	\$96.5 K 2.2%	\$713 K 2.2%	\$1.53 M 2.2%
Entertainment	\$245 K 5.5%	\$1.81 M 5.5%	\$3.87 M 5.5%
Food and Beverages	\$707 K 15.9%	\$5.25 M 15.9%	\$11.2 M 15.9%
Furnishings and Equipment	\$182 K 4.1%	\$1.35 M 4.1%	\$2.88 M 4.1%
Gifts	\$109 K 2.5%	\$809 K 2.5%	\$1.73 M 2.5%
Health Care	\$296 K 6.7%	\$2.20 M 6.7%	\$4.70 M 6.7%
Household Operations	\$146 K 3.3%	\$1.08 M 3.3%	\$2.32 M 3.3%
Miscellaneous Expenses	\$77.2 K 1.7%	\$573 K 1.7%	\$1.22 M 1.7%
Personal Care	\$65.1 K 1.5%	\$483 K 1.5%	\$1.03 M 1.5%
Personal Insurance	\$41.8 K 0.9%	\$309 K 0.9%	\$660 K 0.9%
Reading	\$14.6 K 0.3%	\$109 K 0.3%	\$232 K 0.3%
Shelter	\$857 K 19.3%	\$6.35 M 19.3%	\$13.6 M 19.3%
Tobacco	\$34.2 K 0.8%	\$255 K 0.8%	\$545 K 0.8%
Transportation	\$880 K 19.8%	\$6.53 M 19.8%	\$13.9 M 19.8%
Utilities	\$333 K 7.5%	\$2.48 M 7.5%	\$5.29 M 7.5%

Educational Attainment (2014)

	1 Mile	3 Miles	5 Miles
Adult Population Age 25 Years or Over	192	1,469	3,188
Elementary (Grade Level 0 to 8)	28 14.5%	229 15.6%	468 14.7%
Some High School (Grade Level 9 to 11)	35 18.1%	279 19.0%	622 19.5%
High School Graduate	75 39.3%	581 39.5%	1,293 40.6%
Some College	30 15.4%	211 14.4%	440 13.8%
Associate Degree Only	5 2.6%	38 2.6%	93 2.9%
Bachelor Degree Only	14 7.1%	92 6.2%	187 5.9%
Graduate Degree	6 3.0%	39 2.7%	84 2.7%

This report was produced using data from private and government sources deemed to be reliable. The information herein is provided without representation or warranty.

EXPANDED PROFILE

2000-2010 Census, 2014 Estimates with 2019 Projections

Calculated using Proportional Block Groups

Lat/Lon: 37.4344/-81.5761

RF5

1021 Virginia Avenue

Welch, WV

Units In Structure (2010)

	1 Mile		3 Miles		5 Miles	
1 Detached Unit	87	72.6%	656	72.1%	1,418	72.5%
1 Attached Unit	2	1.3%	12	1.3%	20	1.0%
2 to 4 Units	8	6.5%	50	5.5%	95	4.8%
5 to 9 Units	1	0.4%	4	0.4%	8	0.4%
10 to 19 Units	-	0.2%	2	0.2%	3	0.2%
20 to 49 Units	1	0.6%	5	0.5%	8	0.4%
50 or More Units	6	5.1%	38	4.2%	69	3.5%
Mobile Home or Trailer	16	13.2%	143	15.7%	335	17.1%
Other Structure	-	-	-	-	-	-

Homes Built By Year (2010)

Homes Built 2005 or later	2	1.4%	12	1.4%	26	1.3%
Homes Built 2000 to 2004	5	4.4%	38	4.2%	80	4.1%
Homes Built 1990 to 1999	12	9.8%	86	9.4%	194	9.9%
Homes Built 1980 to 1989	11	9.1%	81	9.0%	192	9.8%
Homes Built 1970 to 1979	17	14.5%	143	15.8%	309	15.8%
Homes Built 1960 to 1969	7	5.4%	49	5.4%	118	6.0%
Homes Built 1950 to 1959	22	18.0%	152	16.7%	275	14.0%
Homes Built Before 1949	45	37.5%	348	38.2%	764	39.0%

Home Values (2010)

Home Values \$1,000,000 or More	-	-	-	-	-	-
Home Values \$500,000 to \$999,999	-	0.2%	1	0.2%	2	0.2%
Home Values \$400,000 to \$499,999	-	0.2%	1	0.2%	3	0.2%
Home Values \$300,000 to \$399,999	-	0.4%	2	0.4%	6	0.4%
Home Values \$200,000 to \$299,999	4	4.7%	26	4.0%	50	3.5%
Home Values \$150,000 to \$199,999	2	2.2%	15	2.3%	39	2.7%
Home Values \$100,000 to \$149,999	6	6.9%	41	6.3%	88	6.1%
Home Values \$70,000 to \$99,999	13	15.9%	99	15.1%	183	12.7%
Home Values \$50,000 to \$69,999	11	12.5%	84	12.8%	170	11.8%
Home Values \$25,000 to \$49,999	26	31.1%	201	30.7%	463	32.2%
Home Values Under \$25,000	22	25.8%	183	28.0%	434	30.2%
Owner-Occupied Median Home Value	\$42,412		\$41,184		\$38,845	
Renter-Occupied Median Rent	\$279		\$277		\$281	

Transportation To Work (2010)

Drive to Work Alone	76	85.9%	571	85.8%	1,168	86.6%
Drive to Work in Carpool	6	6.8%	44	6.6%	90	6.7%
Travel to Work by Public Transportation	1	0.9%	5	0.8%	13	1.0%
Drive to Work on Motorcycle	-	0.3%	3	0.5%	7	0.5%
Walk or Bicycle to Work	1	0.8%	6	0.8%	23	1.7%
Other Means	2	2.7%	19	2.8%	22	1.6%
Work at Home	2	2.6%	17	2.6%	25	1.8%

Travel Time (2010)

Travel to Work in 14 Minutes or Less	38	43.8%	277	42.7%	509	38.5%
Travel to Work in 15 to 29 Minutes	28	32.5%	219	33.7%	457	34.5%
Travel to Work in 30 to 59 Minutes	11	13.1%	87	13.4%	214	16.2%
Travel to Work in 60 Minutes or More	9	10.7%	66	10.2%	143	10.8%
Average Minutes Travel to Work	14.9		15.5		17.1	

This report was produced using data from private and government sources deemed to be reliable. The information herein is provided without representation or warranty.