

FOR SALE

829 NW 19th Ave | Portland, OR 97209



14050 SW Pacific Hwy, Suite 212A, Tigard, OR
503.367.0516 | www.fg-cre.com

PRICE REDUCED!



PROPERTY HIGHLIGHTS

- 7,138 square feet of office and apartment space
- Designed by the esteemed Whidden & Lewis
- Conference room, multiple offices with charming fireplaces and a top-floor lounge featuring a state-of-the-art kitchen and meeting area.
- The lower-level houses a newly renovated 2-bedroom, 2,084 SF apartment with private access, currently leased for additional income.
- Corner lot with 21-spaces of off-street parking
- Close to freeways, public transit, and some of Portland's best restaurants
- Sale Price: ~~\$3,950,000~~ **\$2,950,000**



FOR MORE INFORMATION:

Steve Hunker, CCIM, Vice President/Broker
steve@fg-cre.com

FOR SALE

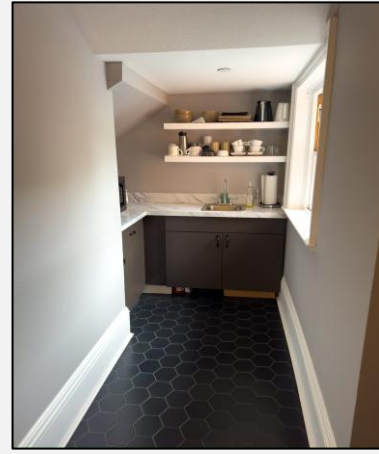
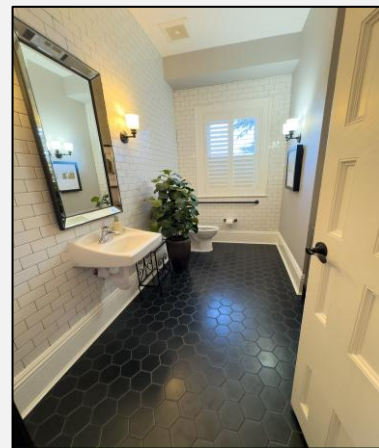
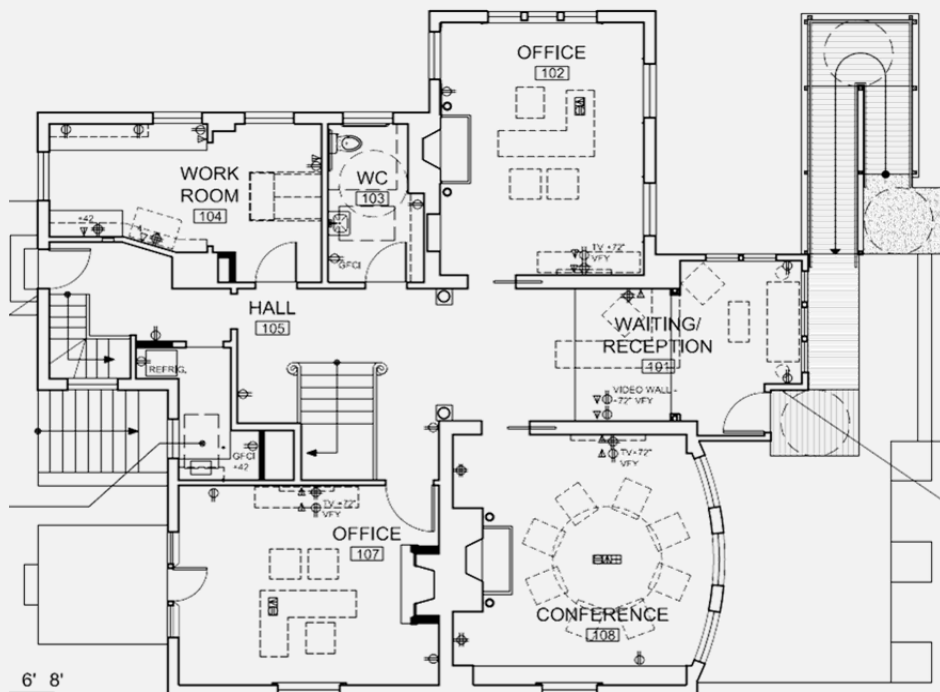
829 NW 19th Ave | Portland, OR 97209



14050 SW Pacific Hwy, Suite 212A, Tigard, OR
503.367.0516 | www.fg-cre.com

MAIN FLOOR OFFICE

- 3 large offices with fireplaces
- Formal entry
- Tiled bathroom
- Kitchenette
- Copy room with additional storage



FOR SALE

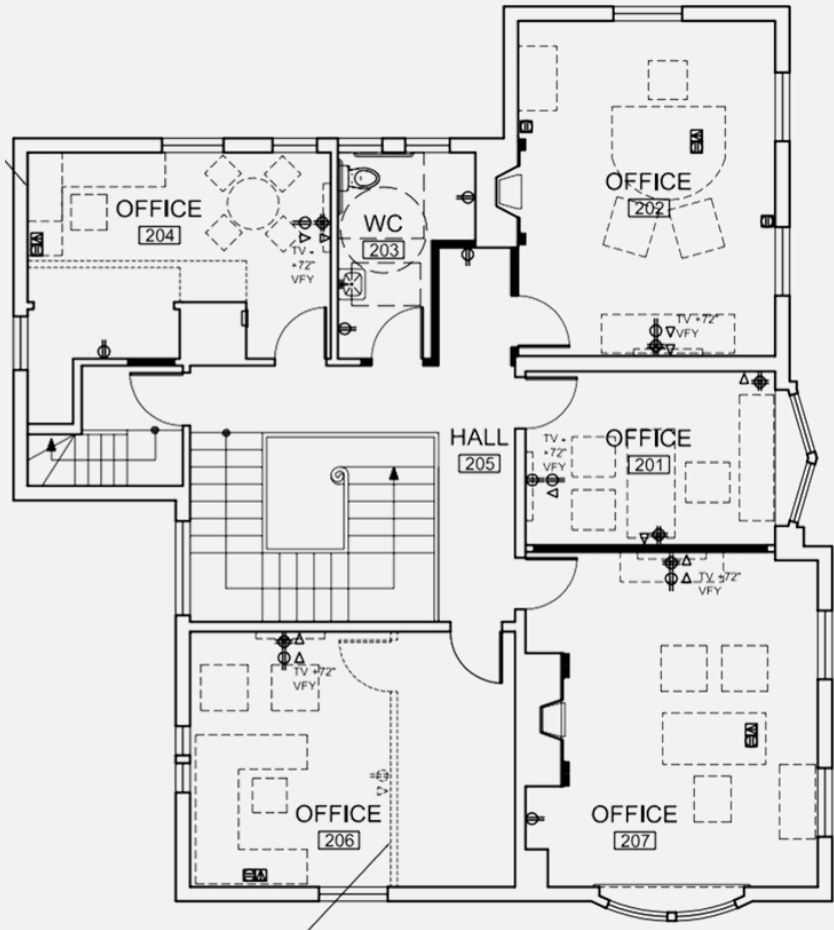
829 NW 19th Ave | Portland, OR 97209



14050 SW Pacific Hwy, Suite 212A, Tigard, OR
503.367.0516 | www.fg-cre.com

SECOND FLOOR OFFICE

- 2 large offices
- 2 small offices
- 1 large sitting room/study
- Bathroom



FOR SALE

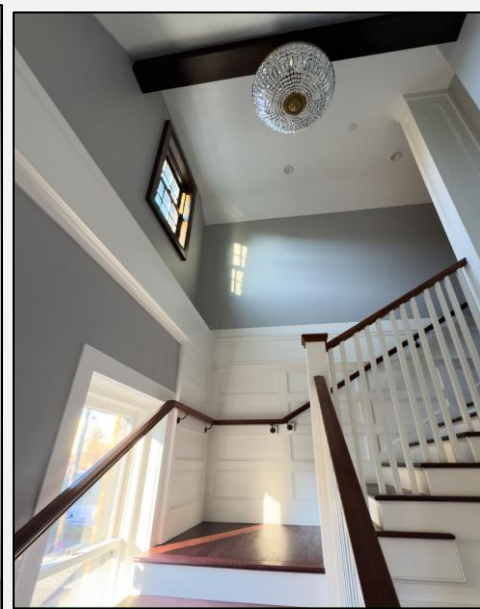
829 NW 19th Ave | Portland, OR 97209



14050 SW Pacific Hwy, Suite 212A, Tigard, OR
503.367.0516 | www.fg-cre.com

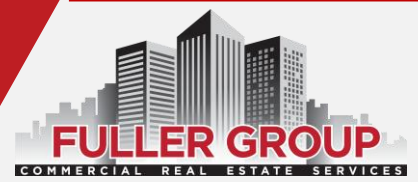
THIRD FLOOR KITCHEN/LOUNGE

- Spacious entertainment lounge
- Full kitchen
- Full bath with shower
- Large additional storage room



FOR SALE

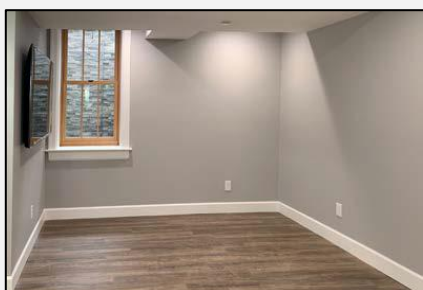
829 NW 19th Ave | Portland, OR 97209



14050 SW Pacific Hwy, Suite 212A, Tigard, OR
503.367.0516 | www.fg-cre.com

Apartment

The lower-level houses a newly renovated 2-bedroom, 2,084 SF apartment with private access, currently leased for additional income. High end finishes, stainless steel appliances.



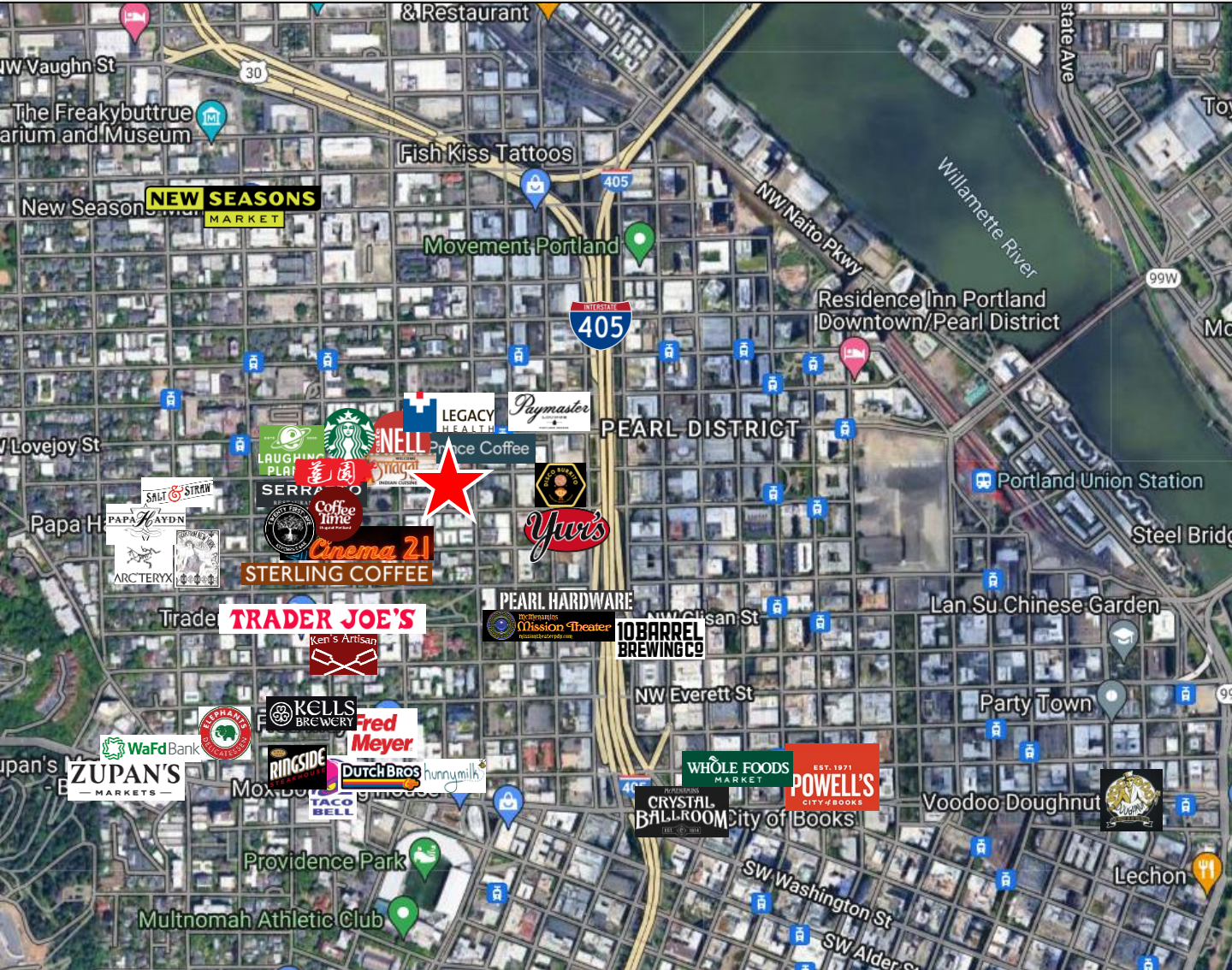
FOR SALE

829 NW 19th Ave | Portland, OR 97209



14050 SW Pacific Hwy, Suite 212A, Tigard, OR
503.367.0516 | www.fg-cre.com

LOCATION, LOCATION, LOCATION



Walk Score 96
Walker's Paradise



Bike Score 96
Biker's Paradise



Transit Score 83
Excellent Transit

Average Daily Traffic

- NW 19th Ave @ NW Johnson St S – 3,800
- NW 19th Ave @ NW Irving St S – 3,949
- NW Lovejoy St @ NW 19th Ave E – 7,234

This statement with the information it contains is given with the understanding that all the negotiations relating to the purchase, rental or leasing of the property described above shall be conducted through this office. The above information, while not guaranteed, has been secured from sources we believe to be reliable.