



**PREMIER**  
COMMERCIAL  
PROPERTIES

# FOR SALE



## Land For Sale

9550 Central Ave NE, Blaine, MN 55434

### AVAILABLE SPACE

- Currently Matt's Home Sales
- Approximately 2.6 Acres
- Small office / Showroom
- Perfect redevelopment
- Access to Hwy 65 via frontage road to signalized intersection at Clover Leaf Parkway
- Signage & visibility to Central Ave, Hwy 65
- 57,192 (2025) vehicles per day
- Zoning for retail, office or limited Multi-Family
- Quick Access to Hwy 10

### PROPERTY DETAILS

Sale Price \$1,450,000

Property Taxes 2026 \$14,355.588

### FOR MORE INFORMATION, CONTACT

**Marty Fisher / Mike Fisher**

763-862-2005

[mfisher@premiercommercialproperties.com](mailto:mfisher@premiercommercialproperties.com)

[mikefisher@premiercommercialproperties.com](mailto:mikefisher@premiercommercialproperties.com)



**PREMIER**  
COMMERCIAL  
PROPERTIES

# FOR SALE

**CONTACT:** Marty Fisher

**MOBILE:** 612-708-2873

**EMAIL:** [mfisher@premiercommercialproperties.com](mailto:mfisher@premiercommercialproperties.com)



From South



From North





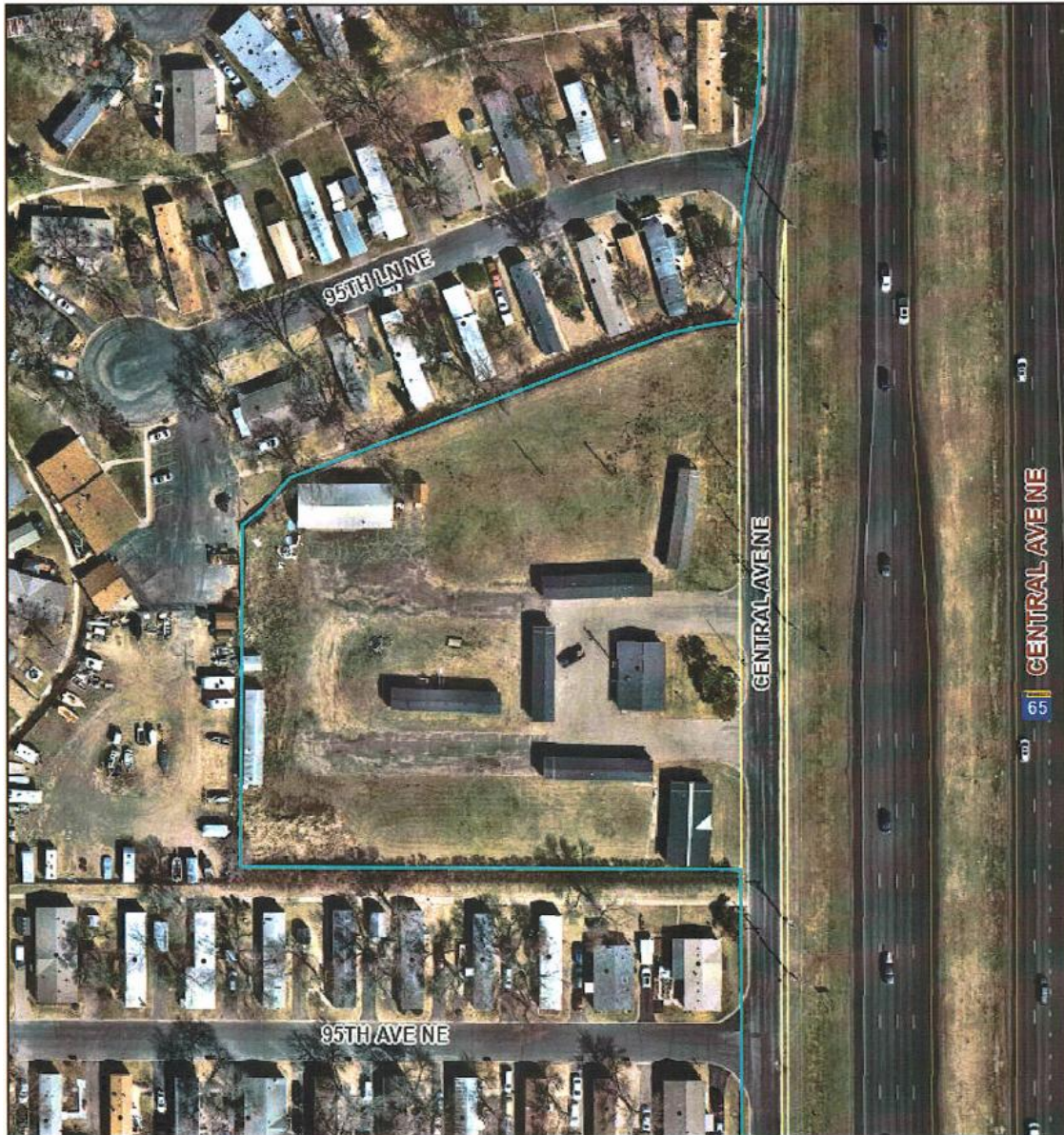
**PREMIER**  
COMMERCIAL  
PROPERTIES

# FOR SALE

**CONTACT:** Marty Fisher

**MOBILE:** 612-708-2873

**EMAIL:** mfisher@premiercommercialproperties.com



Demographics 2025	1 Mile	3 Miles	5 Miles
Population	7,575	69,704	201,556
Households	3,074	26,671	74,811
Average Household Income	\$83,394	\$87,336	\$94,128



**PREMIER**  
COMMERCIAL  
PROPERTIES

# FOR SALE

**CONTACT:** Marty Fisher

**MOBILE:** 612-708-2873

**EMAIL:** [mfisher@premiercommercialproperties.com](mailto:mfisher@premiercommercialproperties.com)

