

PACIFIC INDUSTRIAL PARK



**CLASS A INDUSTRIAL/
FLEX SPACE**

14800 40TH AVE NE, BUILDING D - SUITE D101/103/104 | MARYSVILLE | WASHINGTON | 98271

FOR MORE INFORMATION:

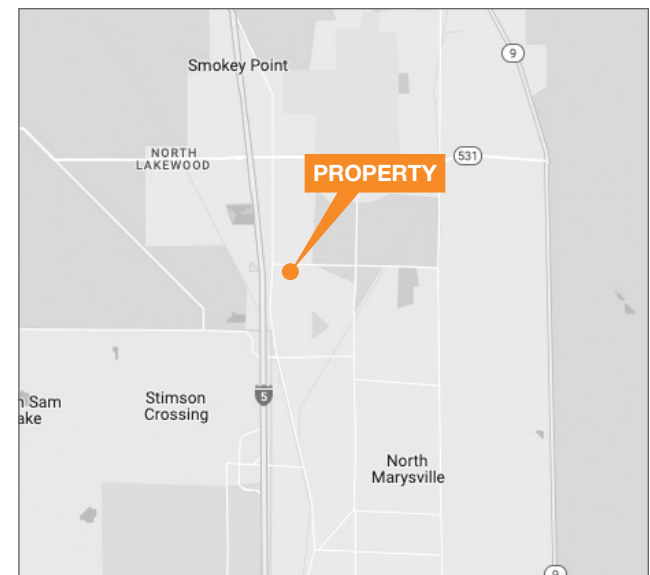
FLETCHER FARRAR
206.787.1469
ffarrar@neilwalter.com

JOE SCALZO
206.787.1478
jscalzo@neilwalter.com

BEN DAVIDSON
206.787.1470
bdavidson@neilwalter.com

PROPERTY FEATURES

- 28,948 SF available
- 2,225 SF office
- 2,660 SF assembly area
- 5 grade level doors
- 3 dock high doors
- Call for rates
- Institutionally owned and managed
- Central location with easy access to highway system
- Available 7/1/2026

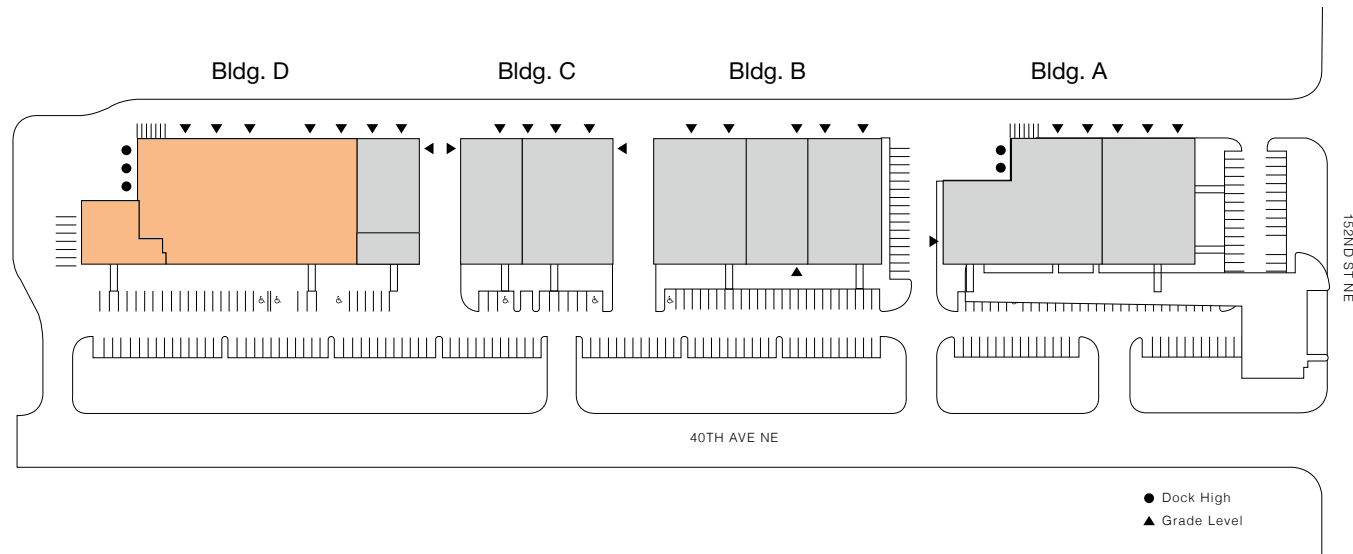


The information contained herein is believed to be accurate but is not warranted as to its accuracy and may change or be updated without notice. Seller or landlord makes no representation as to the environmental condition of the property and recommends purchaser's or tenant's independent investigation.



PACIFIC INDUSTRIAL PARK

SITE PLAN



FOR MORE INFORMATION

FLETCHER FARRAR
206.787.1469
ffarrar@neilwalter.com

JOE SCALZO
206.787.1478
jscalzo@neilwalter.com

BEN DAVIDSON
206.787.1470
bdavidson@neilwalter.com

AVAILABILITIES

■ AVAILABLE ■ OCCUPIED

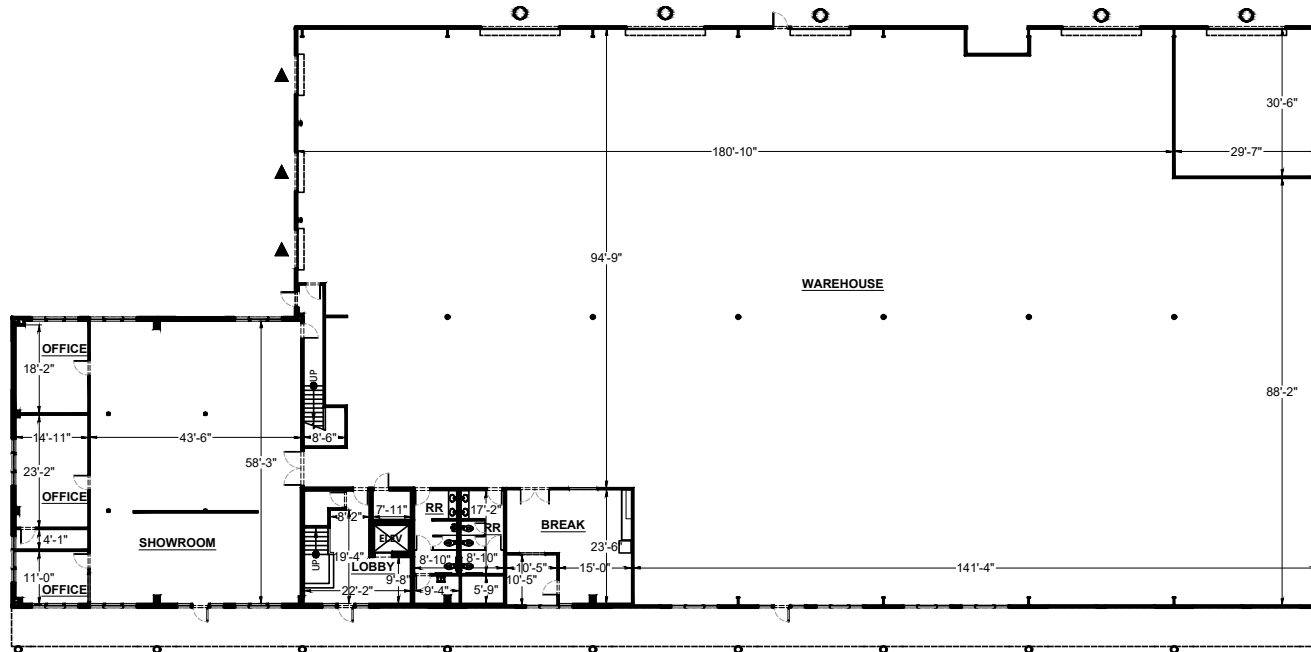
Building	Suite	Total Size	Office Size	Assembly Area	Loading	Floor Plan
D	101/103/104	28,948 SF	2,225 SF	2,660 SF	5 GL & 3 DH	VIEW

PACIFIC INDUSTRIAL PARK
14800 40TH AVE NE
SUITE D101/103/104
MARYSVILLE, WA 98271



PACIFIC INDUSTRIAL PARK

FLOOR PLAN



FOR MORE INFORMATION

FLETCHER FARRAR
206.787.1469
ffarrar@neilwalter.com

JOE SCALZO
206.787.1478
jscalzo@neilwalter.com

BEN DAVIDSON
206.787.1470
bdavidson@neilwalter.com

PACIFIC INDUSTRIAL PARK
14800 40TH AVE NE
SUITE D101/103/104
MARYSVILLE, WA 98271

