

41150 VAN BORN ROAD
CANTON, MICHIGAN

OFFICE FOR LEASE
8,000-12,000 Square Feet Available



**SIGNATURE
ASSOCIATES**
KNOW SIGNATURE | KNOW RESULTS

MUST SEE SPACE



PROPERTY FEATURES

- 8,000-12,000 square feet available
- Clean and bright second floor office space available for lease
- 15' ceiling height
- Built in 2018
- Ample parking
- Easy access with elevator and stairway just inside the entryway
- Lease Rate: \$15.00/sq. ft. Gross



For more information, please contact:

JASON STOUGH
(248) 948 4180
jstough@signatureassociates.com

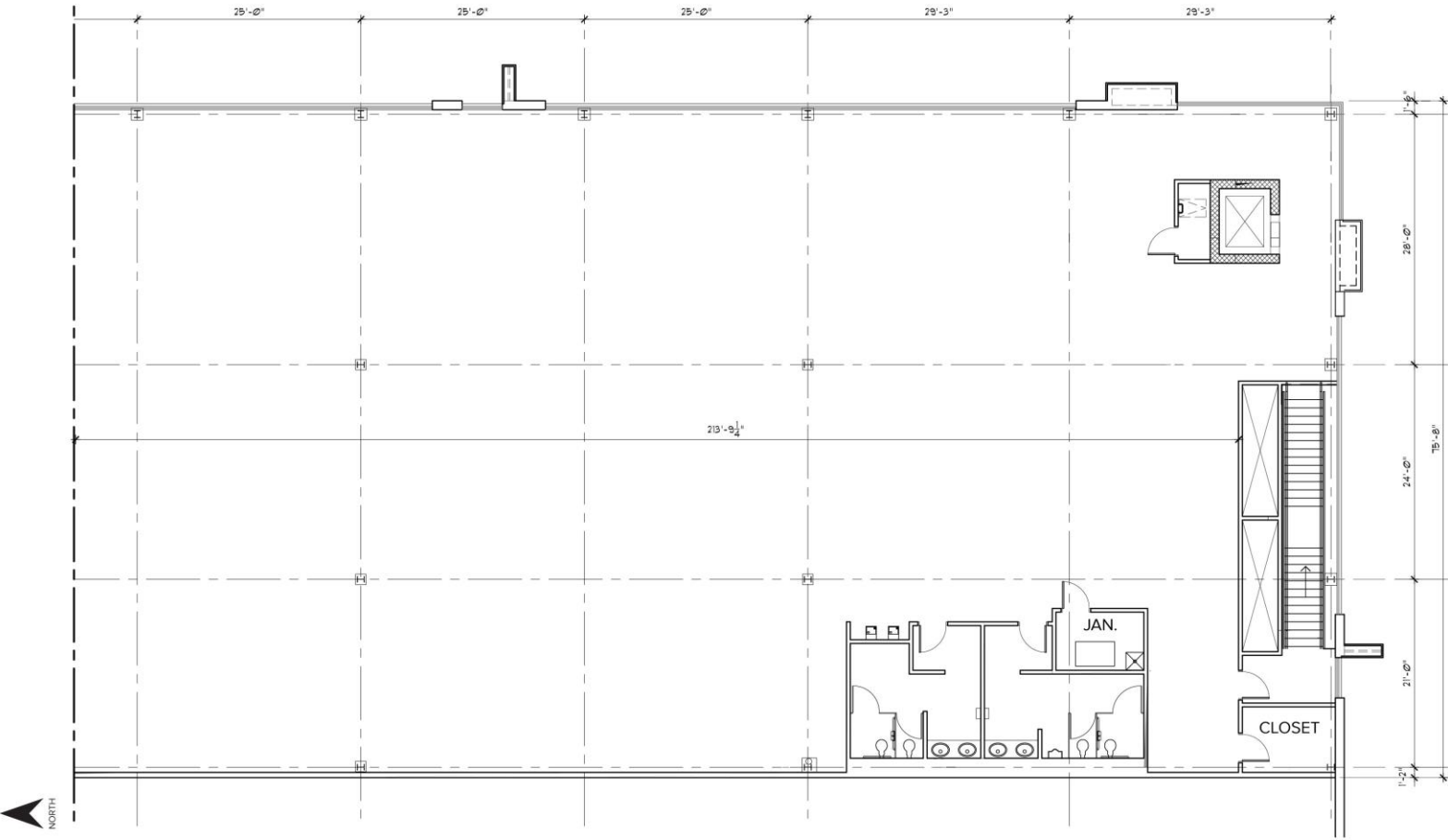
SIGNATURE ASSOCIATES
One Towne Square, Suite 1200
Southfield, MI 48076
www.signatureassociates.com

41150 Van Born Road – Canton, Michigan

Office For Lease

8,000-12,000
Square Feet
AVAILABLE

Floor Plan



For more information, please contact:
JASON STOUGH
(248) 948 4180
jstough@signatureassociates.com

SIGNATURE ASSOCIATES
One Towne Square, Suite 1200
Southfield, MI 48076
www.signatureassociates.com

Information is subject to verification and no liability for errors or omissions is assumed. Price is subject to change and listing withdrawal.