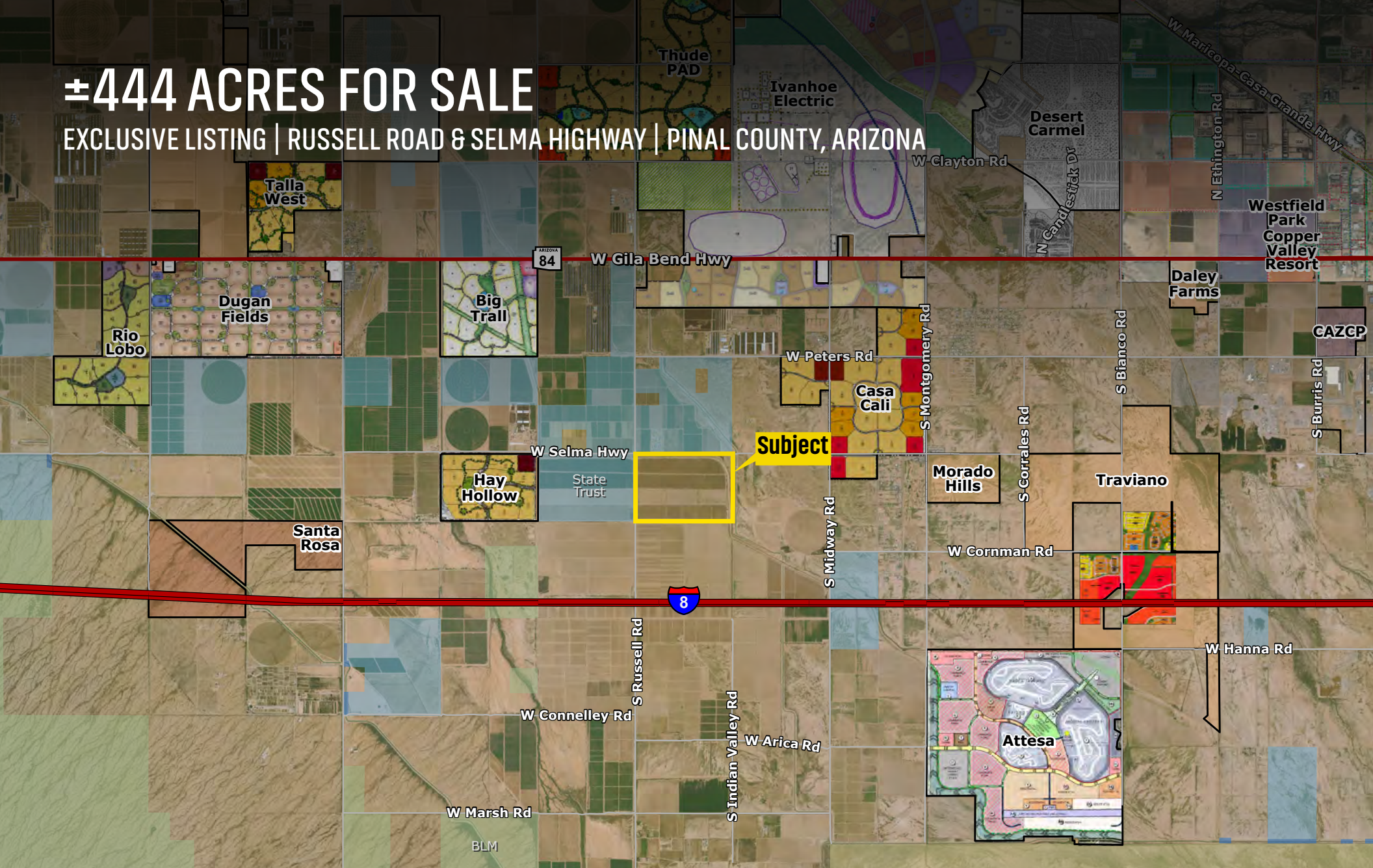


±444 ACRES FOR SALE

EXCLUSIVE LISTING | RUSSELL ROAD & SELMA HIGHWAY | PINAL COUNTY, ARIZONA



CONTACT FOR MORE INFORMATION

Ben Heglie
bheglie@landadvisors.com
480.874.4302

Ryan Semro
rsemro@landadvisors.com
480.874.4317

Bret Rinehart
brinehart@landadvisors.com
480.874.4306

 Land Advisors[®]
ORGANIZATION

480.483.8100 | LandAdvisors.com

EXECUTIVE SUMMARY



LOCATION

The Property is located at the southeast corner of Russell Road & Selma Highway in Pinal County, Arizona



PRICE

Submit



SIZE

±444.2 Acres
[Click here to view the ALTA Survey](#)



PARCEL

500-13-001



ZONING

GR (General Rural), Pinal County



UTILITIES

Power - Electrical District 3
Water - Arizona Water Company
Gas - Southwest Gas Company



IRRIGATION DISTRICT

Maricopa Stanfield Irrigation District



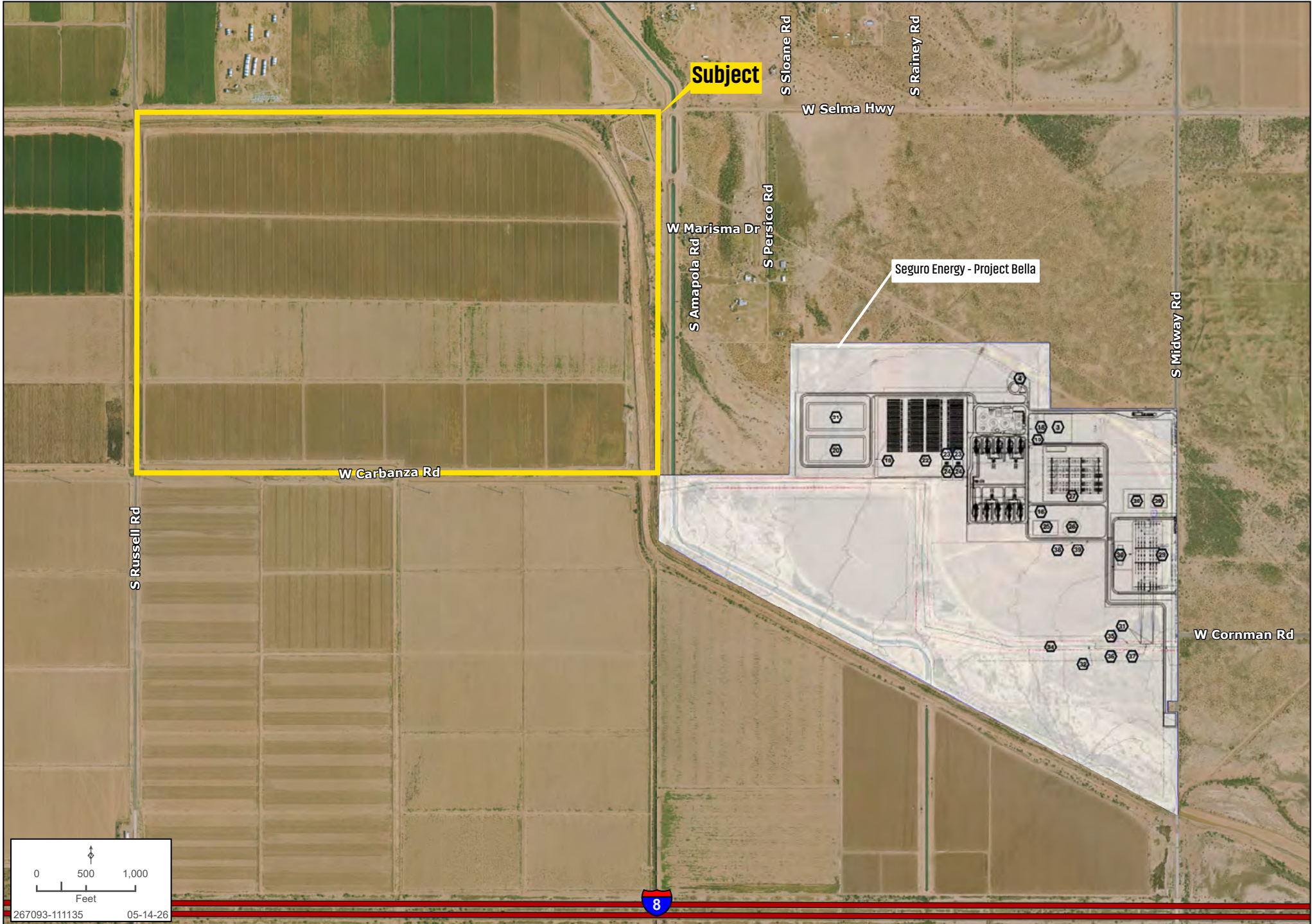
COMMENTS

- [Click here to View the Water Rights](#)
- Strategically positioned adjacent to Project Bella, a major energy development by Seguro Energy Partners. [Click here to learn more about Project Bella.](#)



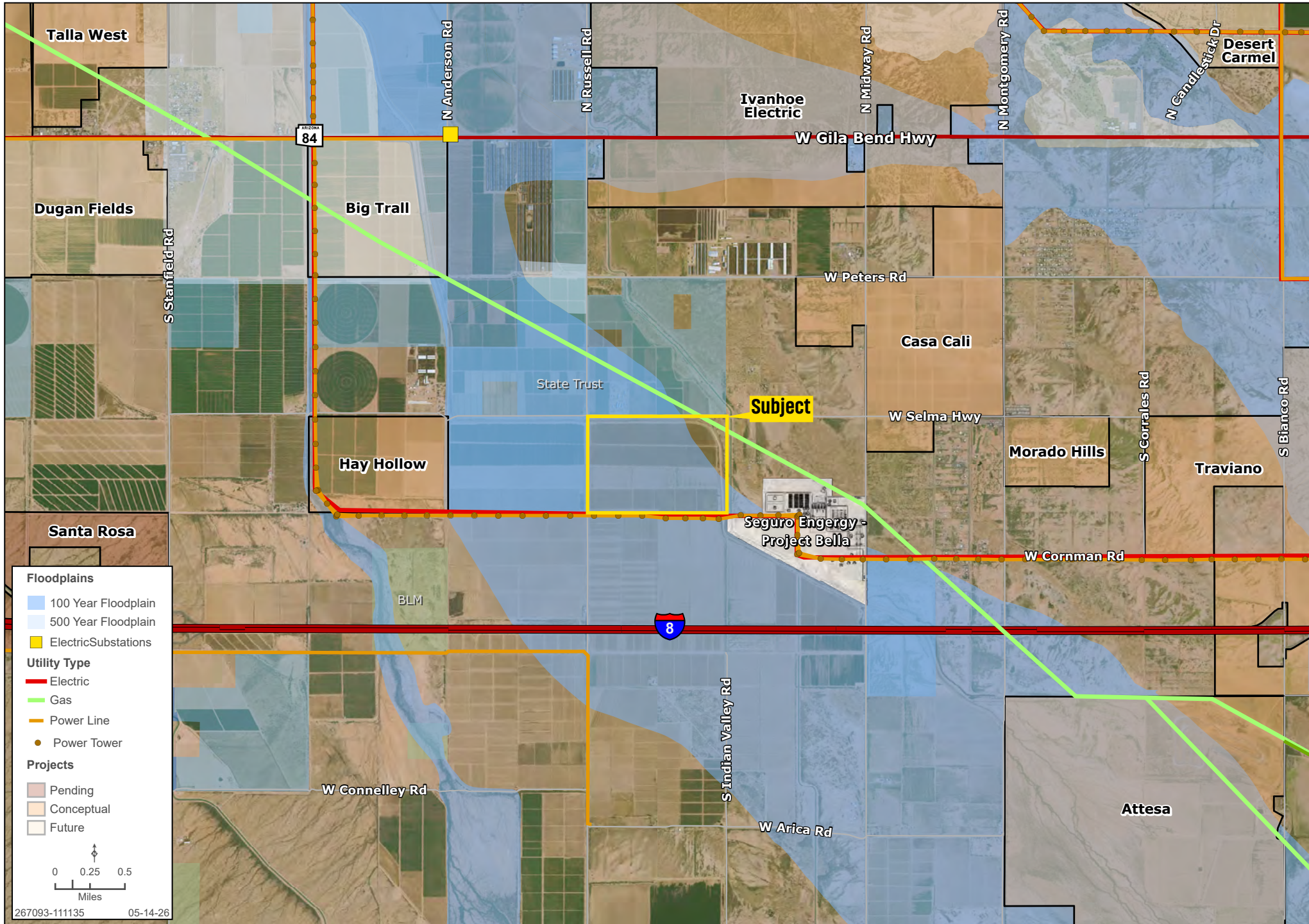
DETAIL

Ben Heglie | Ryan Semro | Bret Rinehart | 480.483.8100 | landadvisors.com



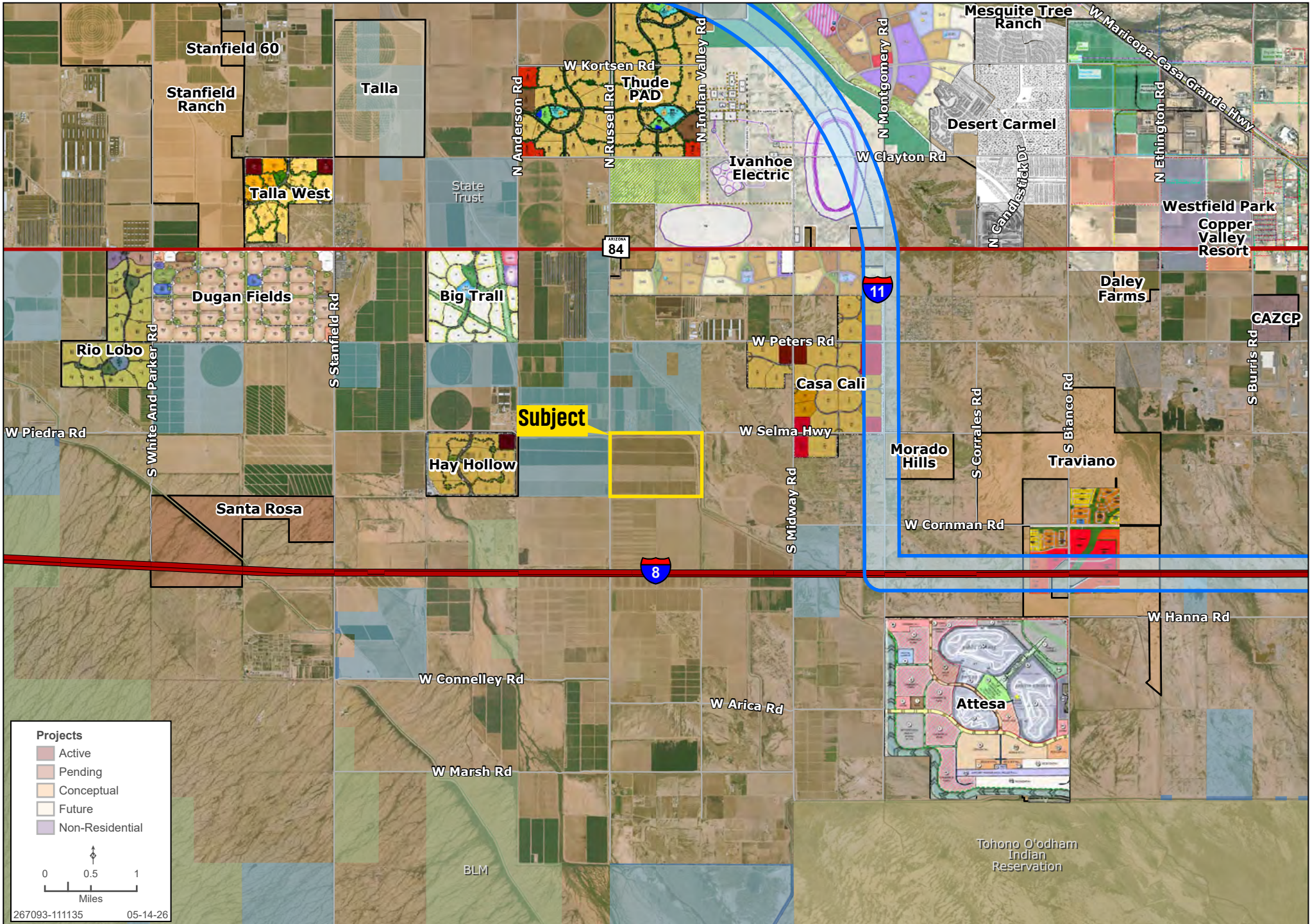
AREA

Ben Heglie | Ryan Semro | Bret Rinehart | 480.483.8100 | landadvisors.com



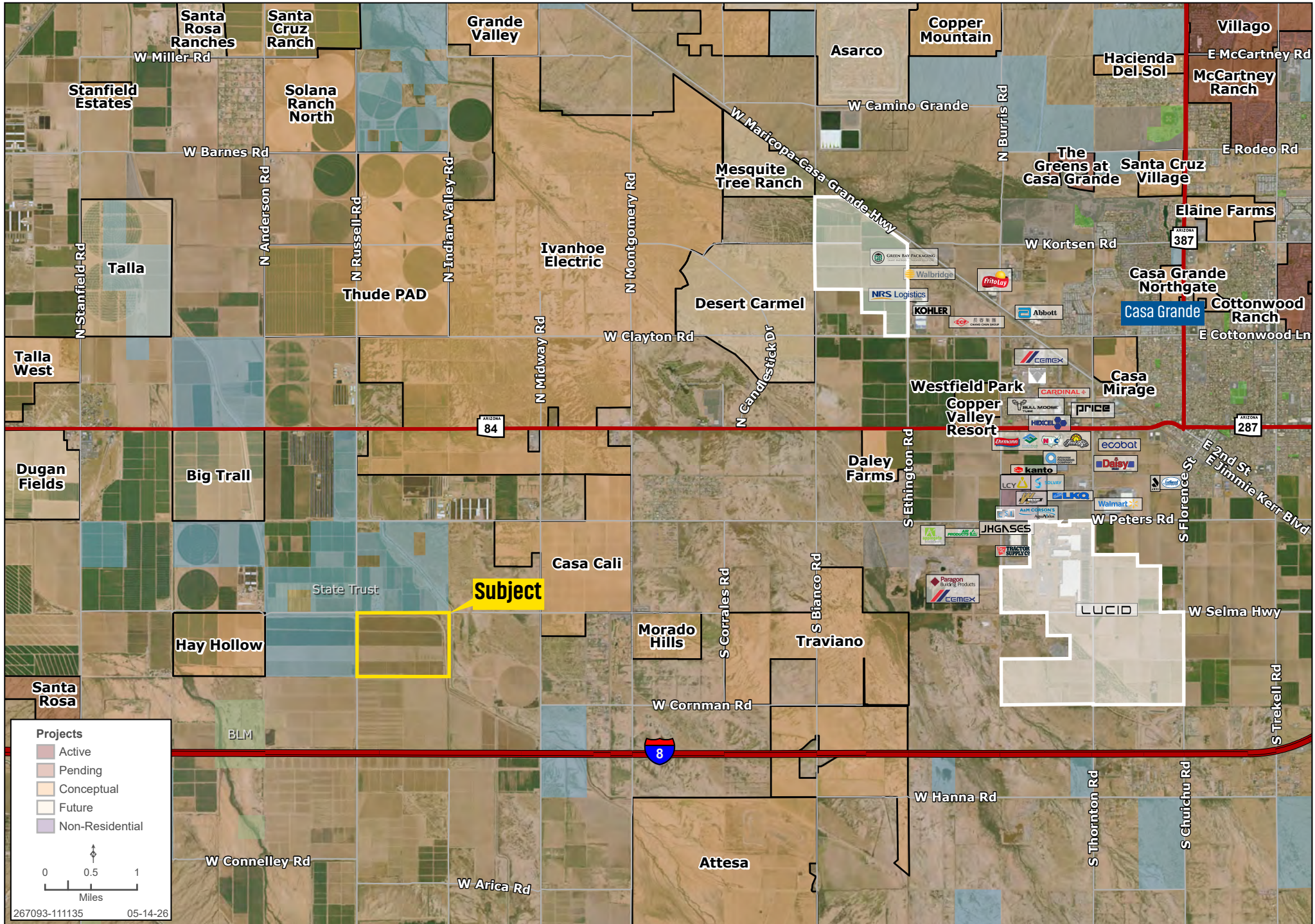
DEVELOPMENT

Ben Heglie | Ryan Semro | Bret Rinehart | 480.483.8100 | landadvisors.com



CORPORATE NEIGHBORS

Ben Heglie | Ryan Semro | Bret Rinehart | 480.483.8100 | landadvisors.com



Subject

Projects

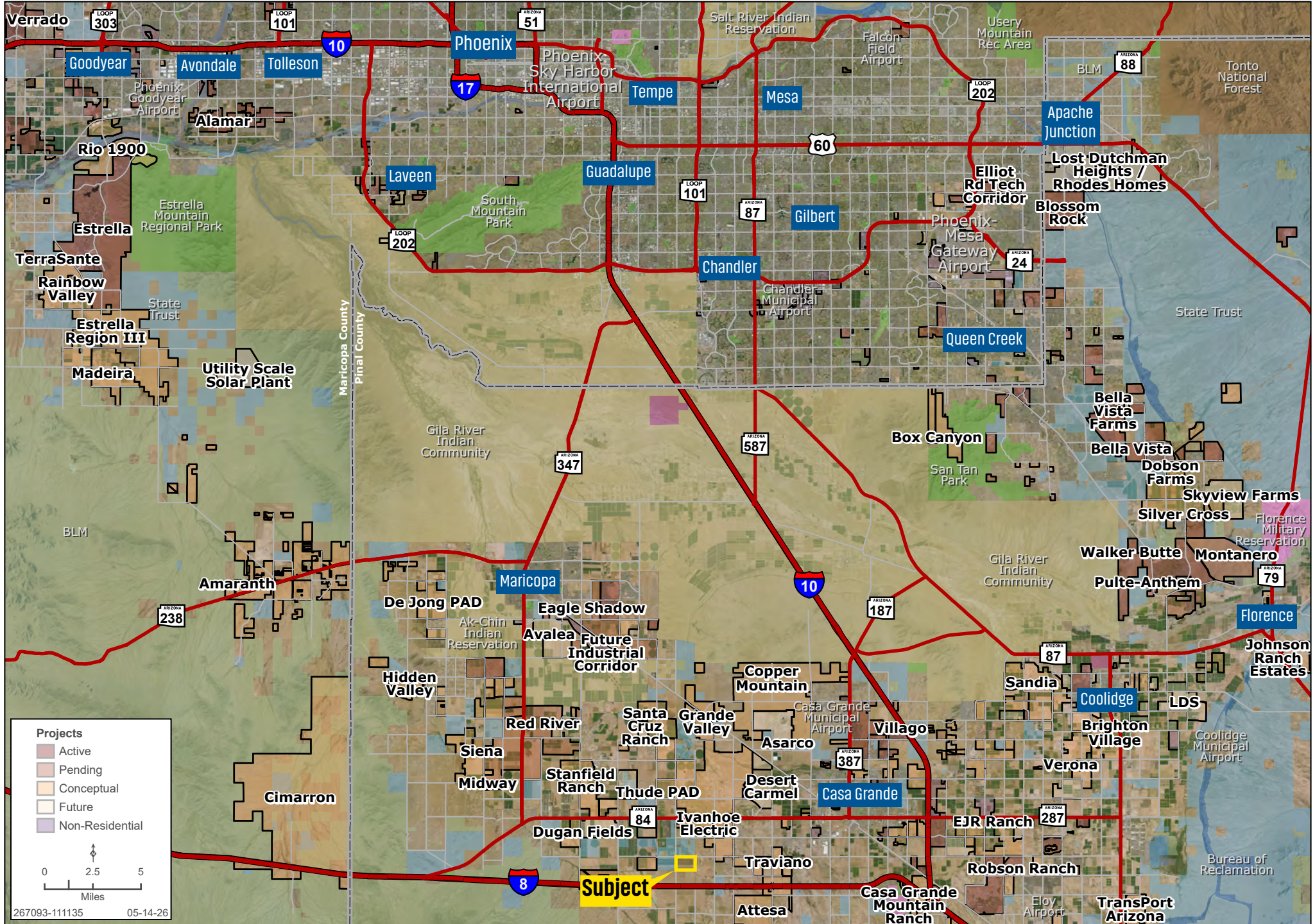
- Active
- Pending
- Conceptual
- Future
- Non-Residential

0 0.5 1
Miles

267093-111135 05-14-26

REGIONAL

Ben Heglie | Ryan Semro | Bret Rinehart | 480.483.8100 | landadvisors.com



The information in this document and any attachments regarding any property has been obtained from sources believed reliable, but we have not verified it and we make no guarantee, warranty, or representation as to its accuracy or completeness, and we do not undertake to update or correct any of the information presented. Any projections, opinions, assumptions, or estimates ("forward-looking statements") used are, for example, only and do not represent the current or future performance of the property and actual results may differ materially from such forward-looking statement due to, without limitation, changes in: (i) the market, (ii) governmental legal, regulatory or permitted use changes, and (iii) other factors. You and your advisors should conduct a careful, independent investigation of the property to determine to your satisfaction the property's suitability for your needs. Any reliance on this information is at your own risk and is subject to change, prior sale or complete withdrawal. AZPinal267093 - 05.15.2026.



[LandAdvisors.com](https://www.LandAdvisors.com)