

FOR LEASE

SITE



RETAIL/OFFICE

NEWMARK

MOUNTAIN WEST

DUSTIN MORTIMER  
dmortimer@newmarkmw.com  
direct 208.874.0230  
[View Profile](#)

## PROPERTY DETAILS

1320 S Holmes Ave, Idaho Falls, ID 83404

- ±1,560 SF retail/office space with a versatile open layout
- Expansive main floor area ideal for a variety of uses
- Adaptable space suitable for retail, office, studio, or service users
- Centrally located with convenient access for clients and employees
- Lease Rate: \$1,200/month NNN

### SURROUNDING TENANTS



## 2025 DEMOS



### EST. POPULATION

1 MILE » **14,843**  
 3 MILE » **74,261**  
 5 MILE » **114,036**



### EST. HOUSEHOLDS

1 MILE » **5,977**  
 3 MILE » **28,456**  
 5 MILE » **40,905**



### EST. AVERAGE HH INCOME

1 MILE » **\$87,936**  
 3 MILE » **\$97,088**  
 5 MILE » **\$103,743**

FULL SERVICE  
COMMERCIAL REAL ESTATE  
482 Constitution Way, Suite 211  
Idaho Falls, ID 83402  
Office 208.874.0230  
[www.newmarkmw.com](http://www.newmarkmw.com)



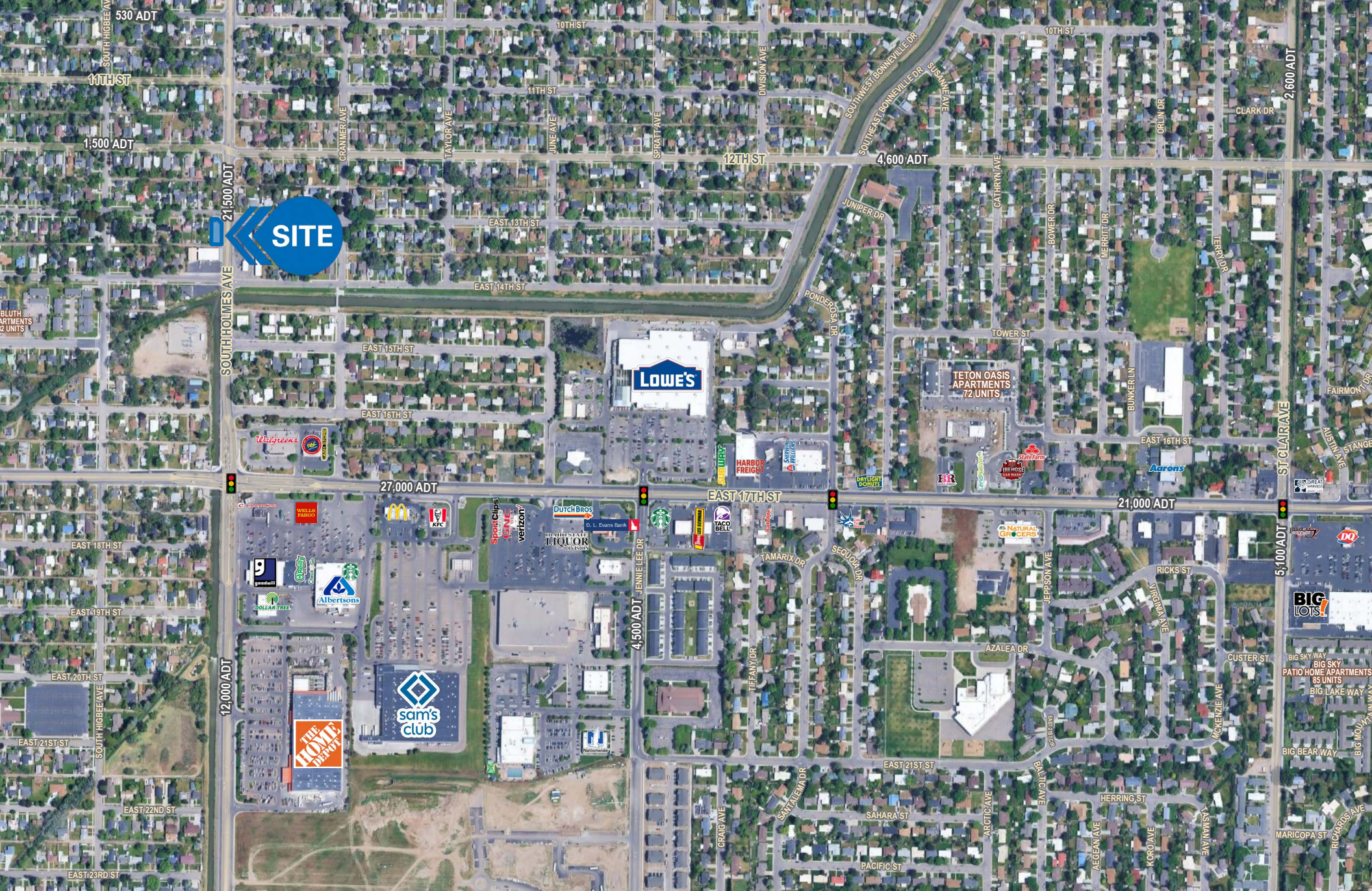
**NEWMARK**

**MOUNTAIN WEST**

**DUSTIN MORTIMER**  
dmortimer@newmarkmw.com  
direct 208.874.0230  
[View Profile](#)

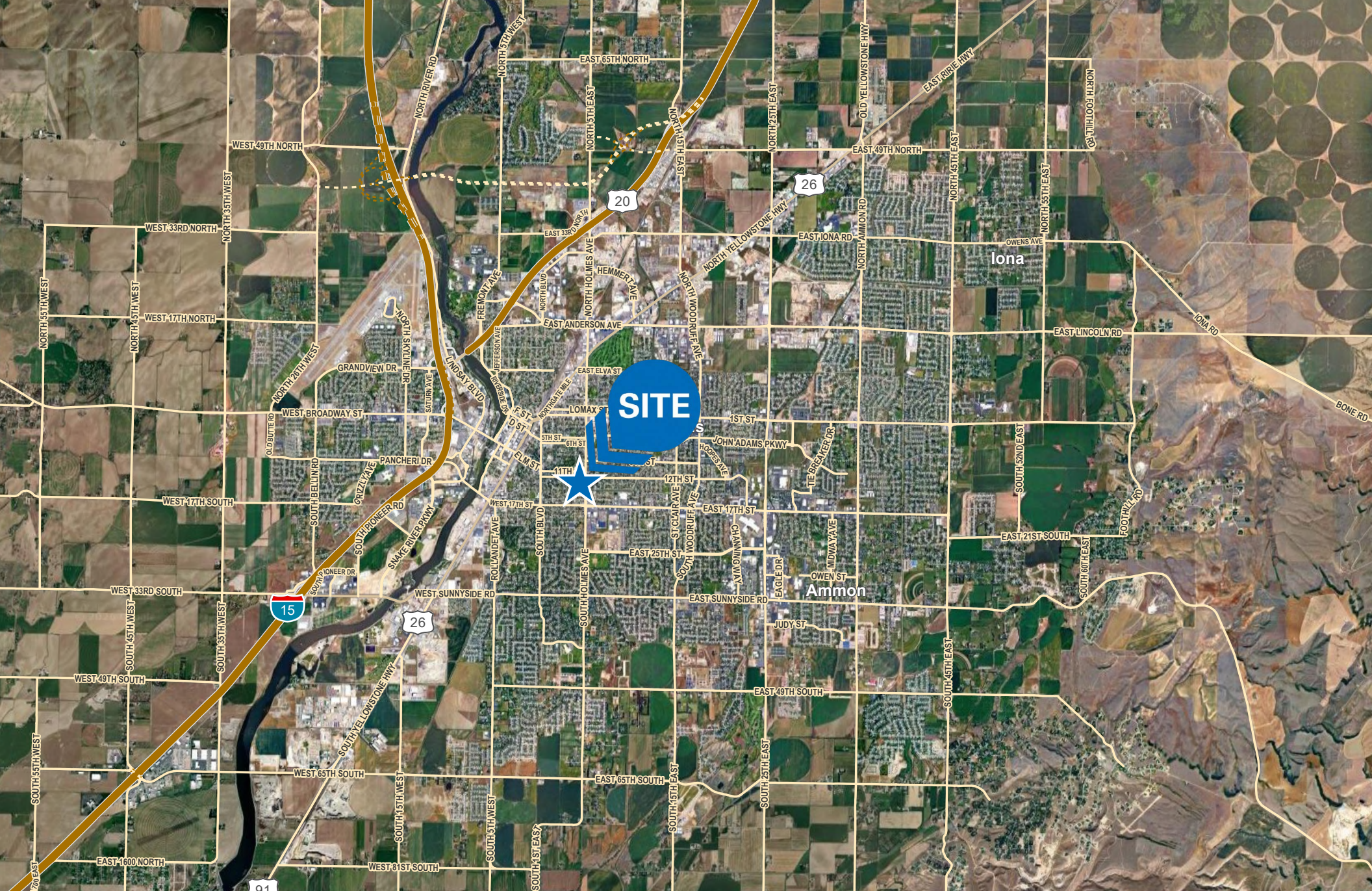


**FULL SERVICE  
COMMERCIAL REAL ESTATE**  
482 Constitution Way, Suite 211  
Idaho Falls, ID 83402  
Office 208.874.0230  
[www.newmarkmw.com](http://www.newmarkmw.com)



**DUSTIN MORTIMER**  
 dmortimer@newmarkmw.com  
 direct 208.874.0230  
[View Profile](#)

**FULL SERVICE  
 COMMERCIAL REAL ESTATE**  
 482 Constitution Way, Suite 211  
 Idaho Falls, ID 83402  
 Office 208.874.0230  
[www.newmarkmw.com](http://www.newmarkmw.com)



**DUSTIN MORTIMER**  
dmortimer@newmarkmw.com  
direct 208.874.0230  
[View Profile](#)

**FULL SERVICE  
COMMERCIAL REAL ESTATE**  
482 Constitution Way, Suite 211  
Idaho Falls, ID 83402  
Office 208.874.0230  
[www.newmarkmw.com](http://www.newmarkmw.com)