

1624 E WASHINGTON ST | PHOENIX, AZ 85034

URBAN DISTRICT
FLEX LOFTS



COMMERCIAL PROPERTIES INC.

Locally Owned. Globally Connected. CORFAC INTERNATIONAL

TEMPE: 2323 W University Drive, Tempe, AZ 85281 | 480.966.2301
SCOTTSDALE: 8767 E Via de Commercio, Suite 101, Scottsdale, AZ 85258 | www.cpi.az.com

Brandon Koplin

D 480.214.1103

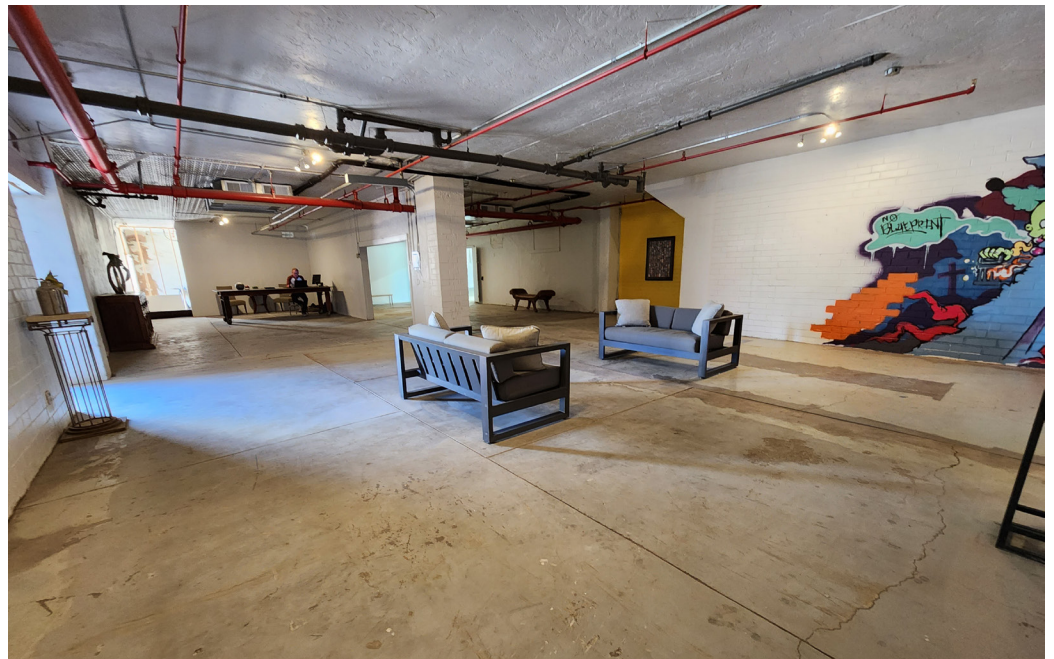
M 602.373.4717

bkoplin@cpi.az.com

The information contained herein has been obtained from various sources. We have no reason to doubt its accuracy; however, J & J Commercial Properties, Inc. has not verified such information and makes no guarantee, warranty or representation about such information. The prospective buyer or lessee should independently verify all dimensions, specifications, floor plans, and all information prior to the lease or purchase of the property. All offerings are subject to prior sale, lease, or withdrawal from the market without prior notice. 02.26.26

OFFICE/RETAIL FLEX LOFTS AVAILABLE FOR LEASE

Address	1624 E Washington St Phoenix, AZ 85034
Building Size	±17,696 SF
Year Built	1925
Zoning	C-3, City of Phoenix
Parcel	115-04-094, 095, 096, 097
Floors	2
Frontage	E Washington St



COMMERCIAL PROPERTIES INC.

Locally Owned. Globally Connected. CORFAC INTERNATIONAL

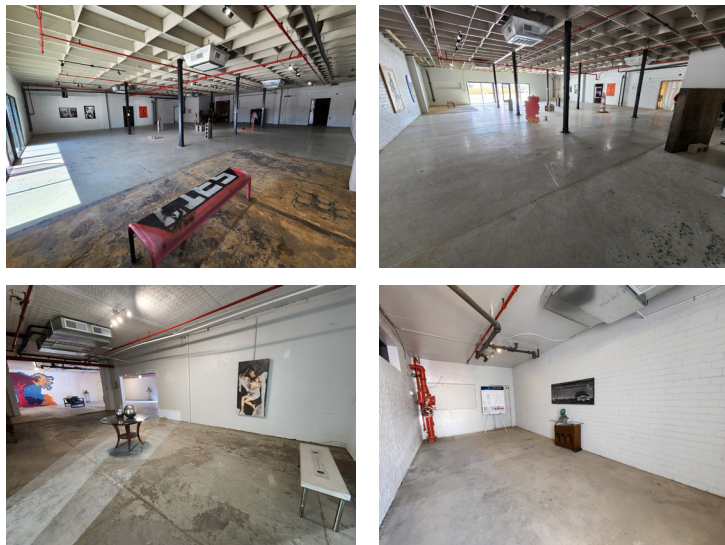
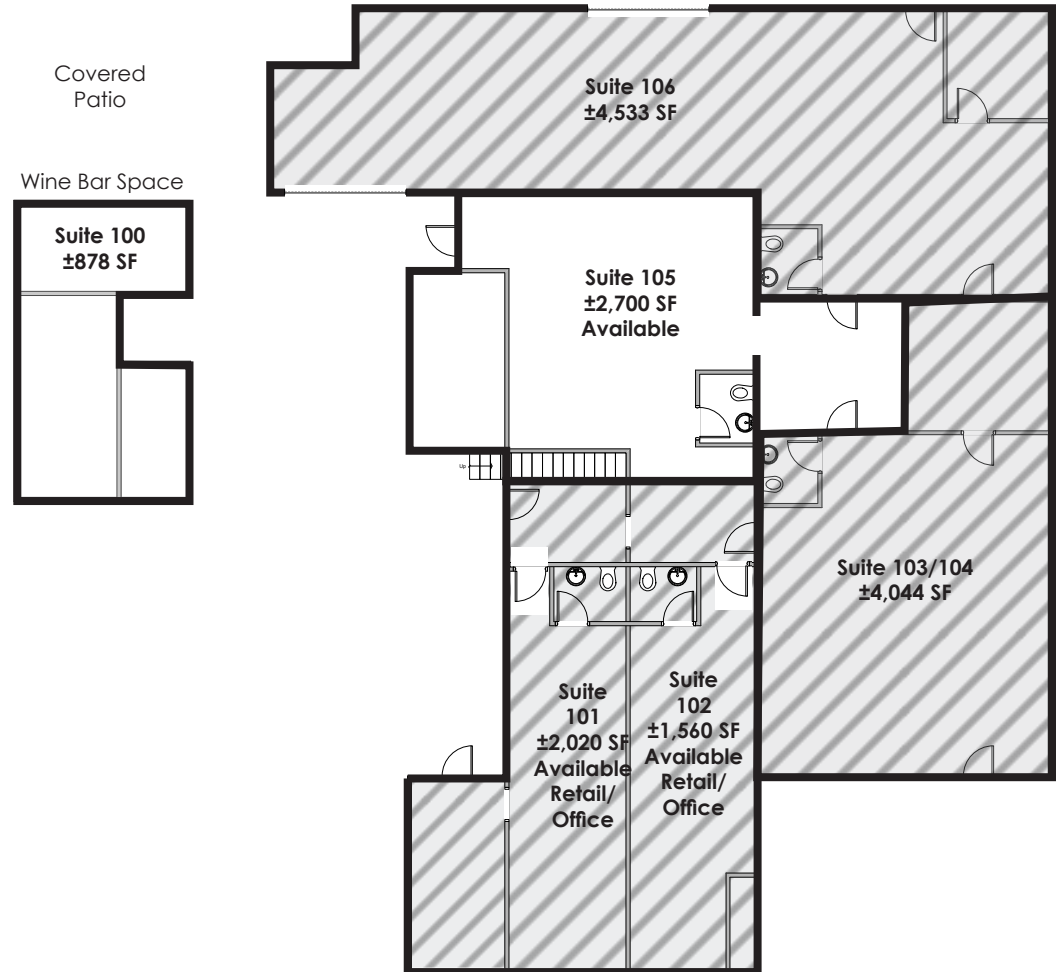
TEMPE: 2323 W University Drive, Tempe, AZ 85281 | 480.966.2301
SCOTTSDALE: 8767 E Via de Comercio, Suite 101, Scottsdale, AZ 85258 | www.cpi.az.com

Brandon Koplin
D 480.214.1103
M 602.373.4717
bkoplin@cpi.az.com

The information contained herein has been obtained from various sources. We have no reason to doubt its accuracy; however, J & J Commercial Properties, Inc. has not verified such information and makes no guarantee, warranty or representation about such information. The prospective buyer or lessee should independently verify all dimensions, specifications, floor plans, and all information prior to the lease or purchase of the property. All offerings are subject to prior sale, lease, or withdrawal from the market without prior notice. 02.26.26

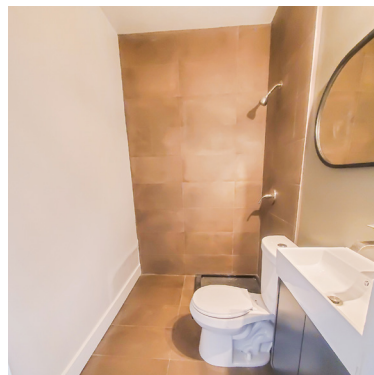
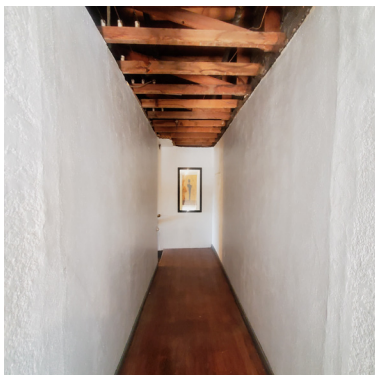
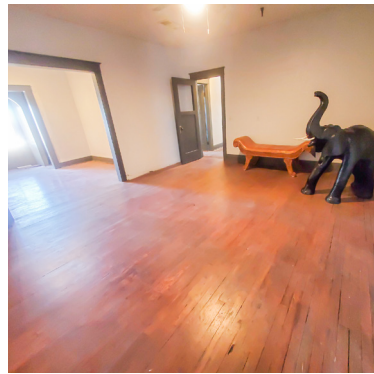
First Floor

SUITE	SIZE	LEASE RATE
100	±878 SF	\$2,995/MO FS
105	±2,700 SF	\$20.00/PSF/YR/ FS



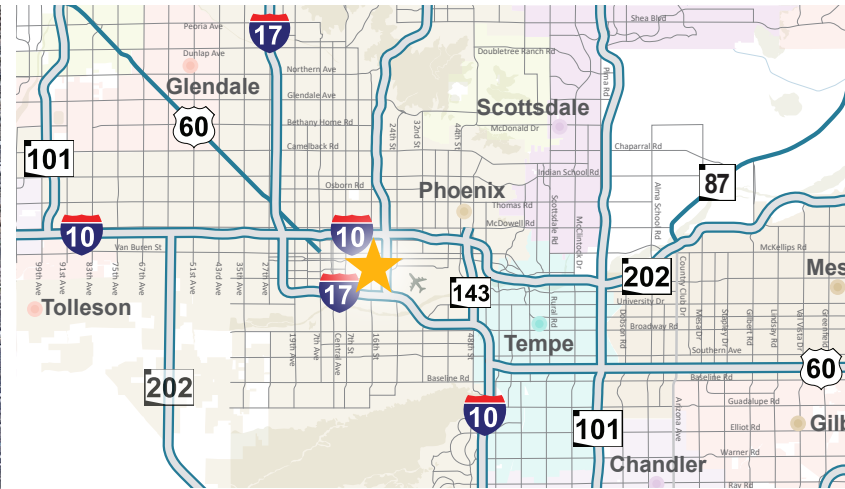
Second Floor

SUITE	SIZE	LEASE RATE
205	±400 SF	\$1,000/MO
206	±545 SF	\$1,300/MO



Small Kitchenette with Fridge and Range
Studio Space Includes a Private Restroom with Shower

URBAN DISTRICT FLEX LOFTS



COMMERCIAL PROPERTIES INC.

Locally Owned. Globally Connected. CORFAC INTERNATIONAL

TEMPE: 2323 W University Drive, Tempe, AZ 85281 | 480.966.2301
SCOTTSDALE: 8767 E Via de Comercio, Suite 101, Scottsdale, AZ 85258 | www.cpi.az.com

Brandon Koplin
D 480.214.1103
M 602.373.4717
bkoplin@cpi.az.com

The information contained herein has been obtained from various sources. We have no reason to doubt its accuracy; however, J & J Commercial Properties, Inc. has not verified such information and makes no guarantee, warranty or representation about such information. The prospective buyer or lessee should independently verify all dimensions, specifications, floor plans, and all information prior to the lease or purchase of the property. All offerings are subject to prior sale, lease, or withdrawal from the market without prior notice. 02.26.26