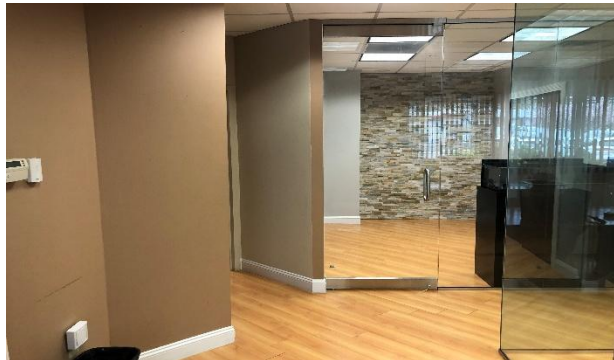


FOR LEASE



45 Essex St, Millburn—OFFICE/RETAIL---Unit 102



900+/-sft

1st floor

B4 zone

Layout: 3 offices, glass walls, coffee station area, private restroom

Offered for Lease
\$30sft + utilities

Onsite parking
Adjacent to Millburn Train Station
Strong demographics

For more information please contact **Sal Bellafiore** 201-400-8847 salb@evergreencommercial.com
or **Cathie Salamone** cathies@evergreencommercial.com 201-400-0660