



**FOR SALE**

**± 8.9 AC MULTI-FAMILY**

**6248 Statesville Rd | Charlotte, NC**

- Opposite 100% Occupied Sunset Crossing grocery-anchored shopping center. Mecklenburg County parcel #: 04543122 & 0454137.
- City of Charlotte zoning approved for 156-unit rental units.
- High visibility and easy access from I-77, Exit 16
- Along the east side of Statesville Road, just north of Keith Drive, convenient to retail, dining, and banking options.
- Walking distance to Nevin Community Park, consisting of walking trails, sports fields, recreation buildings and playgrounds.



**FOR MORE INFORMATION  
PLEASE CONTACT**

 (704) 532 0028

**BVBELK  
PROPERTIES**

REAL ESTATE ACQUISITION / MANAGEMENT / SALES / LEASING

204 West Woodlawn Rd, Suite C  
Charlotte, NC 28217

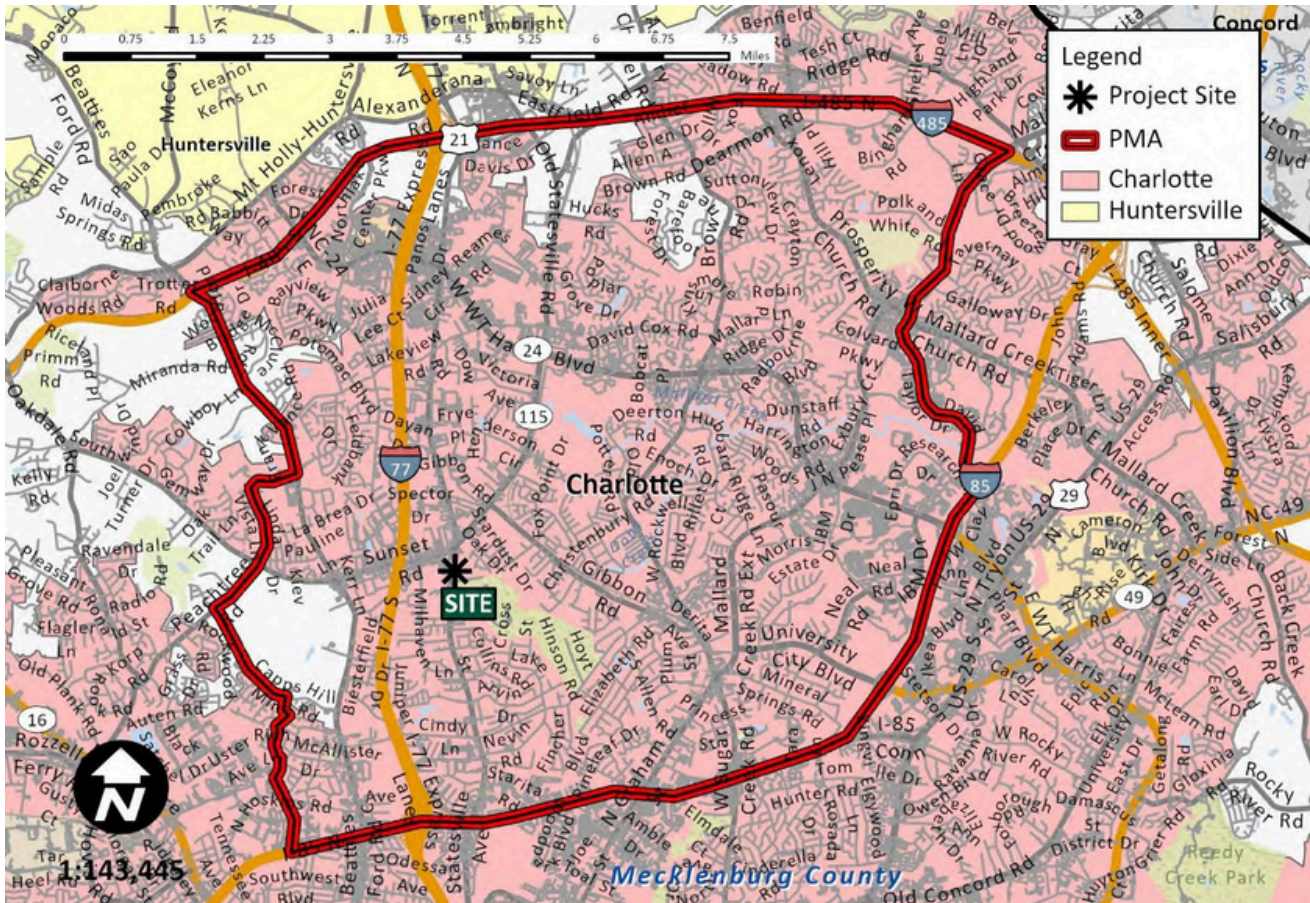
P: (704) 532 0028

F: (704) 532 4301

[bvbproperties.com](http://bvbproperties.com)

# Market Data & Location

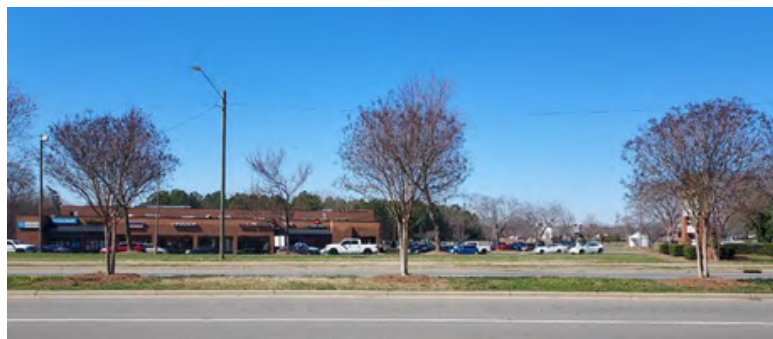
6248 Statesville Rd | Charlotte, NC



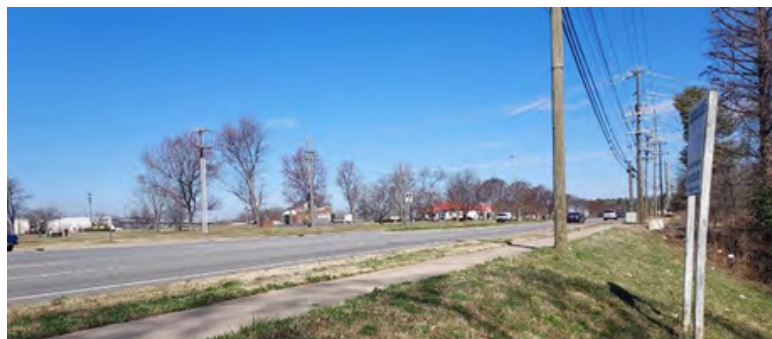


# Conceptual Rendering

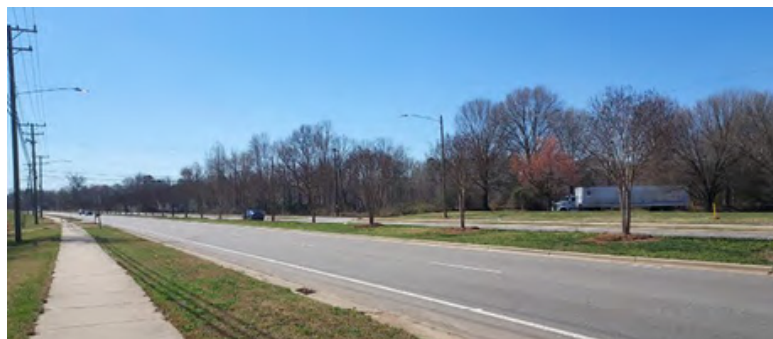
6248 Statesville Rd | Charlotte, NC



View from site facing west to Sunset Crossing Shopping Center



Northwest view from Site towards Sunset Crossing outparcels



Southwest view from Site towards rear of Sunset Crossing

# BVBELK PROPERTIES

REAL ESTATE ACQUISITION / MANAGEMENT / SALES / LEASING

204 W. Woodlawn Rd, STE C

Charlotte, NC 28217

P: (704) 532 0028

F: (704) 532 4301

[bvbproperties.com](http://bvbproperties.com)