

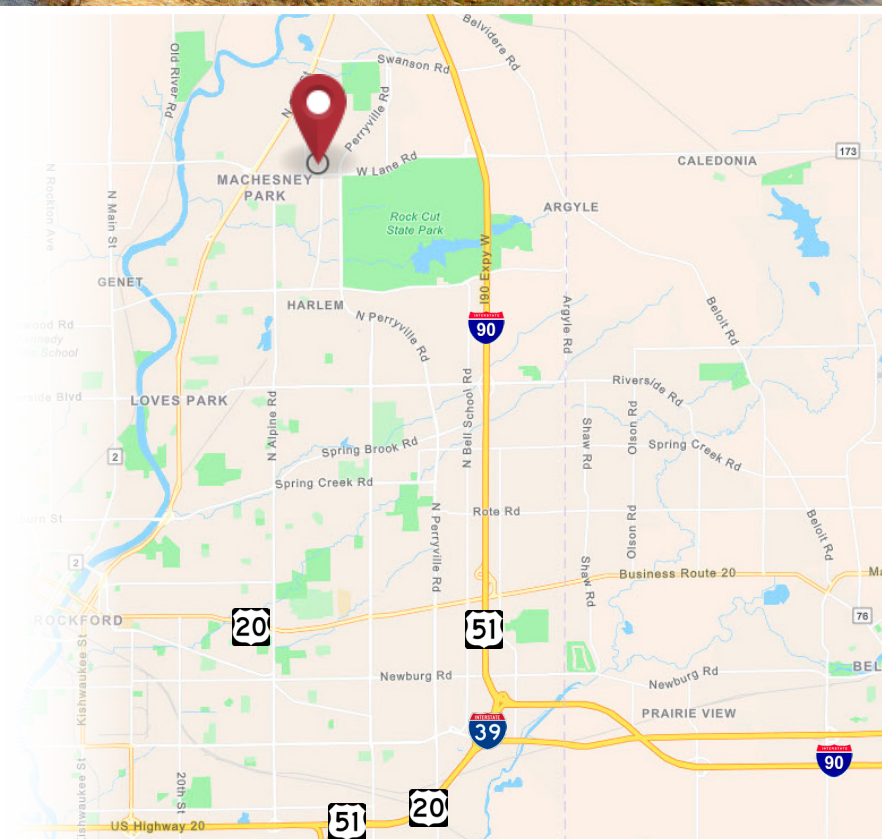


±21,912 SF
on 2.48 Acres
Available

9620 Forest Hills Road
Machesney Park, Illinois 61115

PROPERTY HIGHLIGHTS

- 21,912 SF building
- 1,500 SF office
- 2.48 acres
- 1 truck dock
- 3 drive-in doors
- 20' clear
- 800 amps
- Proximity to Route 251, I-39 and I-90
- Lease Price: Subject To Offer
- Sale Price: Subject To Offer



Contact

Kelly Disser

+1 630 317 0721

kdisser@hiffman.com

Michael J Freitag

+1 630 693 0652

mfreitag@hiffman.com

TJ Feeny

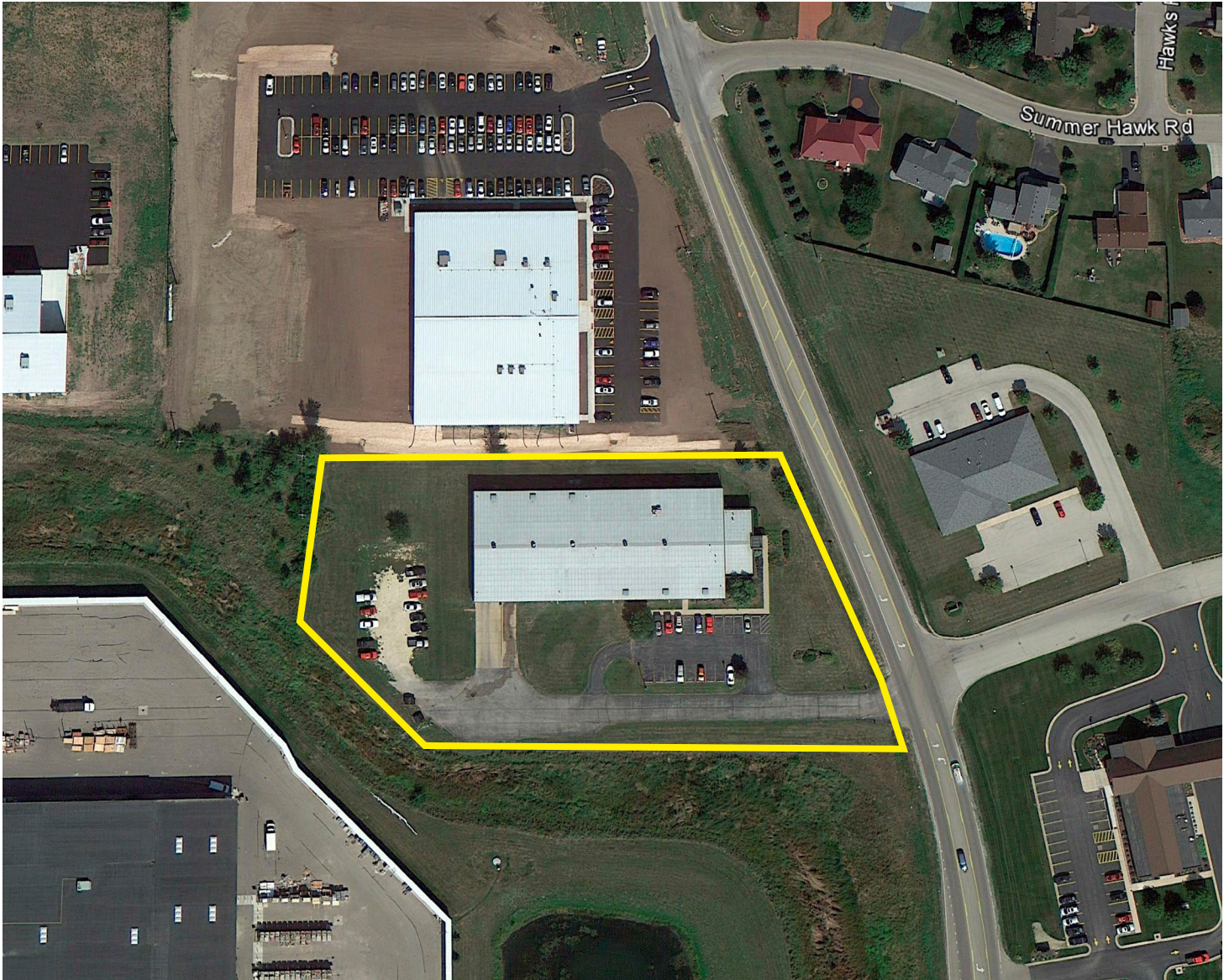
+1 630 693 0680

tfeeny@hiffman.com

Michael Gaughan

+1 630 359 7878

mgaughan@hiffman.com



Contact

Kelly Disser

+1 630 317 0721

kdisser@hiffman.com

Michael J Freitag

+1 630 693 0652

mfreitag@hiffman.com

TJ Feeney

+1 630 693 0680

tfeeney@hiffman.com

Michael Gaughan

+1 630 359 7878

mgaughan@hiffman.com

NAIHiffman
Commercial Real Estate Services, Worldwide

One Oakbrook Terrace
Suite 400

Oakbrook Terrace, Illinois 60181
+1 630 932 1234

hiffman.com

NO WARRANTY OR REPRESENTATION, EXPRESS OR IMPLIED, IS MADE AS TO THE ACCURACY OF THE INFORMATION CONTAINED HEREIN, AND THE SAME IS SUBMITTED SUBJECT TO ERRORS, OMISSIONS, CHANGE OF PRICE, RENTAL OR OTHER CONDITIONS, PRIOR SALE, LEASE OR FINANCING, OR WITHDRAWAL WITHOUT NOTICE, AND OF ANY SPECIAL LISTING CONDITIONS IMPOSED BY OUR PRINCIPALS NO WARRANTIES OR REPRESENTATIONS ARE MADE AS TO THE CONDITION OF THE PROPERTY OR ANY HAZARDS CONTAINED THEREIN ARE ANY TO BE IMPLIED.