

# Hwy 29 North Newnan, GA 30265

*in the Arbor Springs Village Center*



## ZONING:

**O-I:** Office Institutional

**C7:** Corner Parcel

**19.3 +/- Acres**

**GAMLS #: 20115363**

Complete Community

- *Character Area*



## PROPERTY DETAILS

- Perfect Site for Professional Offices, Day Care Center, or Medical Office Complex.
- Located in northern portion of Coweta County, near Arbor Springs golf course community, Lake Redwine and Serenbe.
- Site is located in the Quality Development Corridor Overlay District near Exit 51, Interstate 85.
- High visibility on State Highway 29 with average annual 14,700 daily traffic count.

**BERKSHIRE  
HATHAWAY**  
HOMESERVICES

GEORGIA  
PROPERTIES

**Crystal Bashakes, REALTOR®**

Cell: 678-776-2280

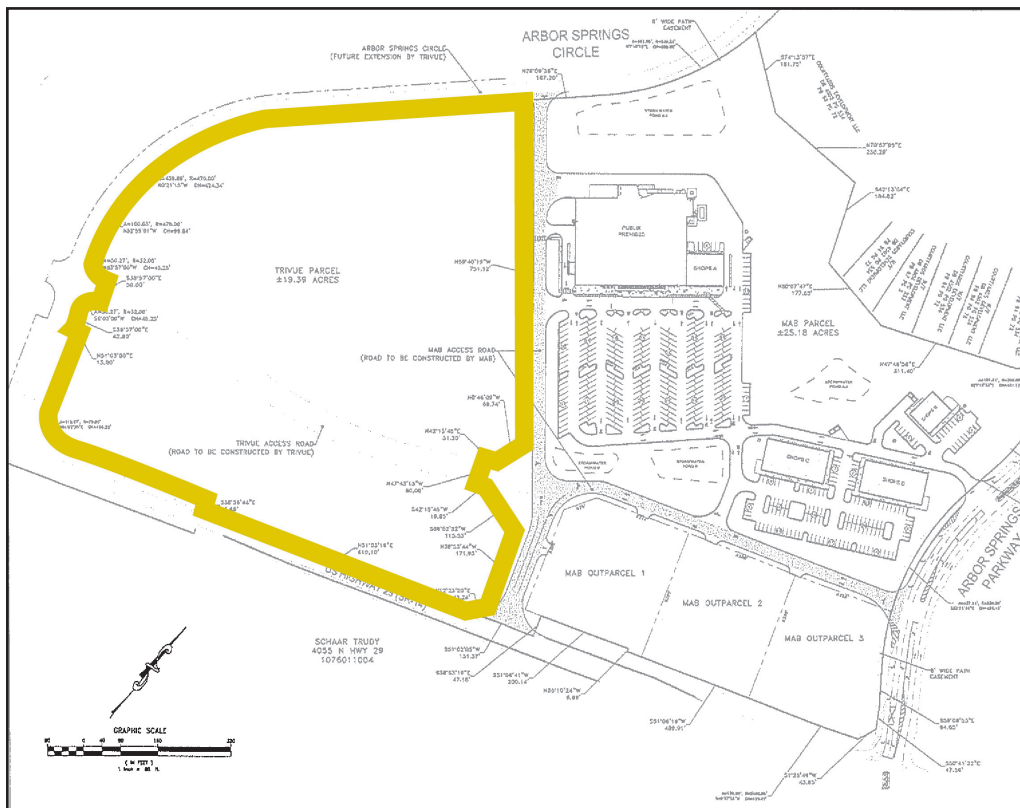
Office: 770-487-8300

[www.crystalbashakes.bhhsgeorgia.com](http://www.crystalbashakes.bhhsgeorgia.com)

[crystal.bashakes@bhhsgeorgia.com](mailto:crystal.bashakes@bhhsgeorgia.com)

# Hwy 29 North Newnan, GA 30265

## Map and Survey



### DISTANCE TO SITE (MILES)

**I-85:**  
1 Mile

**I-285 (via I-85):**  
15 Miles

**Downtown Atlanta:**  
30 +/- Miles

**Hartsfield-Jackson  
Atlanta Airport:**  
22 Miles

**Downtown Newnan:**  
10 Miles

**BERKSHIRE HATHAWAY** | **GEORGIA PROPERTIES**  
HOMESERVICES

**Crystal Bashakes, REALTOR®**  
Cell: 678-776-2280 | Offic: 770-487-8300

# Hwy 29 North Newnan, GA 30265

Surrounding Area



- Neighboring property address: 3836 US-29, Newnan GA 30265
- Sewer & water: Coweta County Water & Sewage Authority
- Population of Coweta County is 151,481 (choosecoweta.com)
- This property has over 900 feet of frontage on US Highway 29

**BERKSHIRE HATHAWAY** | GEORGIA PROPERTIES  
HOMESERVICES

**Crystal Bashakes, REALTOR®**  
Cell: 678-776-2280 | Office: 770-487-8300