

11 HANOVER SQUARE, 23RD FLOOR



As exclusive agents for the building we are pleased to present

Beautiful sun-drenched full floor!
High floor, great views, amazing natural light.

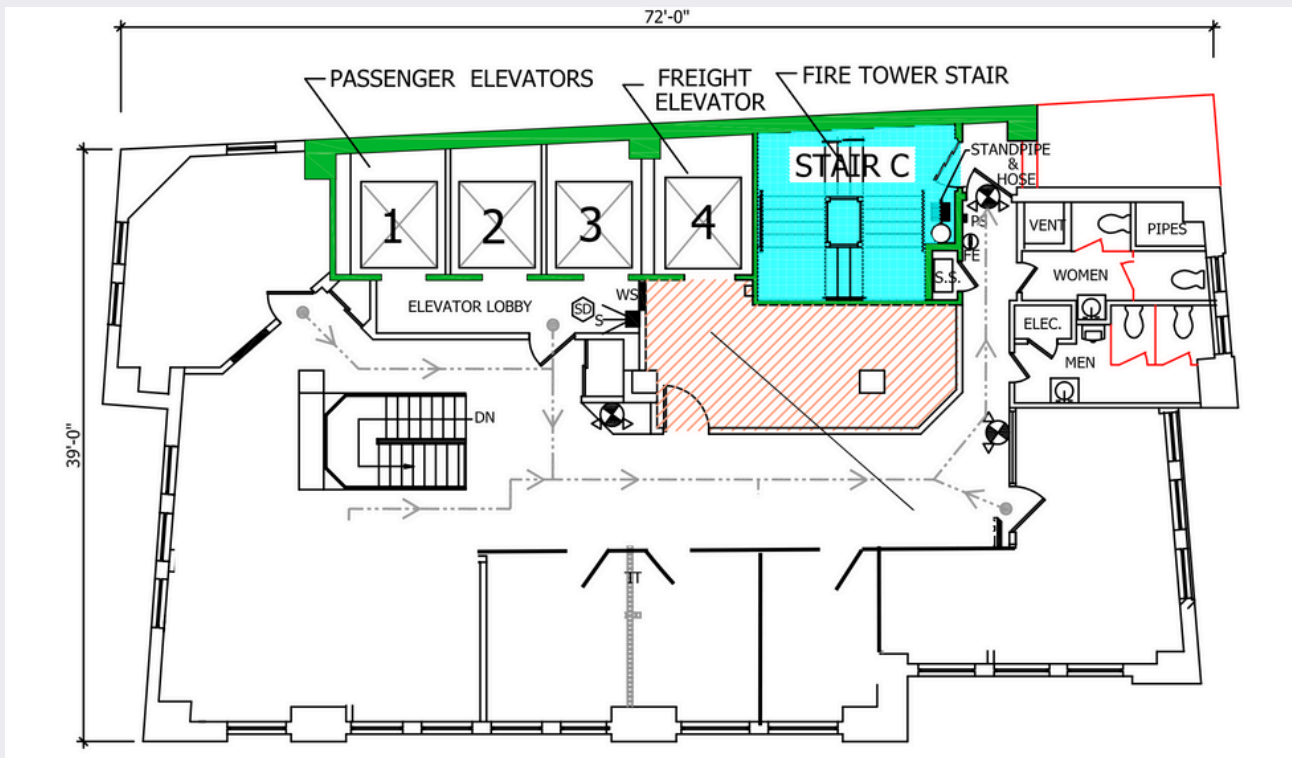
Size: 2,766 RSF

- Corner team room,
- 4 windowed offices,
- Open area for 12 desks

ASKING RENT: Inquire



CURRENT LAYOUT



ABOUT THIS PROPERTY

- Attended lobby
- Building amenities: conference room and pantry with breakout area
- 3 passenger and 1 freight elevator
- Flexible lease term and sizes
- Close to public transit

CONTACT DETAILS

LEASING AGENTS:

Joshua Winslow

📞 917-450-4538

✉️ josh@way2winnyc.com

Liz Chaikovskaya

📞 646-280-8393

✉️ liz@findNYCoffice.com

11 HANOVER SQUARE



As exclusive agents for the building we are pleased to present



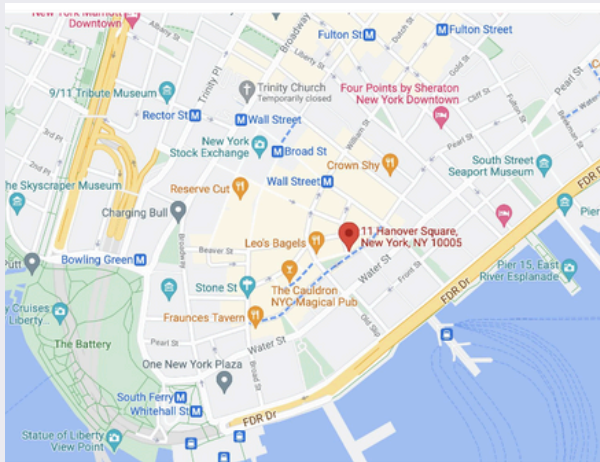
BUILDING AMENITIES



CONFERENCE ROOM



SHARED PANTRY



Transit / Subway

	Walk	Distance
Wall Street (2,3 Line)	4 min	0.2 mi
Broad Street	5 min	0.2 mi
Whitehall Street-South Ferry	5 min	0.3 mi
Wall Street (4,5 Line)	7 min	0.3 mi
Bowling Green	7 min	0.3 mi

Commuter Rail

	Drive	Distance
Flatbush Avenue Station	9 min	3.3 mi
Hoboken Terminal	13 min	4.4 mi

CONTACT DETAILS

LEASING AGENTS:

Joshua Winslow

917-450-4538

josh@way2winnyc.com

Liz Chaikovskaya

646-280-8393

liz@findNYCoffice.com

Although information contained herein has been obtained from sources deemed reliable, neither Way2Win Management, Beekman Properties, nor any of their clients make any guarantees or representations, express or implied, as to the completeness or accuracy of such information. Neither Way2Win Management, Beekman Properties, nor any of their clients accepts any liability for loss resulting from reliance on such information. Any property offered for lease may be withdrawn without notice.