

# NORTH TEXAS PROFESSIONAL BLDG

2817 S Mayhill Rd  
Denton, TX 76208

Office Medical For Lease

1,498 - 6,641 SF



Leasing Information:  
214.461.2388

**Banks Newton**  
214.461.2388  
bnewton@lpc.com

**Peter Shaw**  
214.461.2302  
PShaw@lpc.com

**Elizabeth Madden**  
214.461.2366  
emadden@lpc.com

# Lincoln

8140 Walnut Hill Lane  
Suite 700  
Dallas, TX 75231

[www.lpc.com](http://www.lpc.com)

# NORTH TEXAS PROFESSIONAL BLDG

2817 S Mayhill Rd | Denton, TX 76208

Office Medical For Lease

1,498 - 6,641 SF



## Property Overview

The North Texas Professional Building is a 42,000 square foot institutionally owned medical office building in Denton, TX. The building is located off of I-35E (116,329 VPD) and Mayhill Road (12,414 VPD), and on the campus of The Baylor Scott & White Heart Hospital. The building has multiple 2nd generation medical office suites, as well as shell space.

## Property Highlights

- Customizable Suites
- Generous TI Allowances
- Great Tenant Mix
- Ample Parking

Availabilities	SF
Suite 105	3,491 SF
Suite 115	3,954 SF
Suite 200	6,641 SF
Suite 260	1,498 - 6,260 SF
Suite 270	4,762 - 6,260 SF

**Banks Newton**

214.461.2388  
bnewton@lpc.com

**Peter Shaw**

214.461.2302  
PShaw@lpc.com

**Elizabeth Madden**

214.461.2366  
emadden@lpc.com

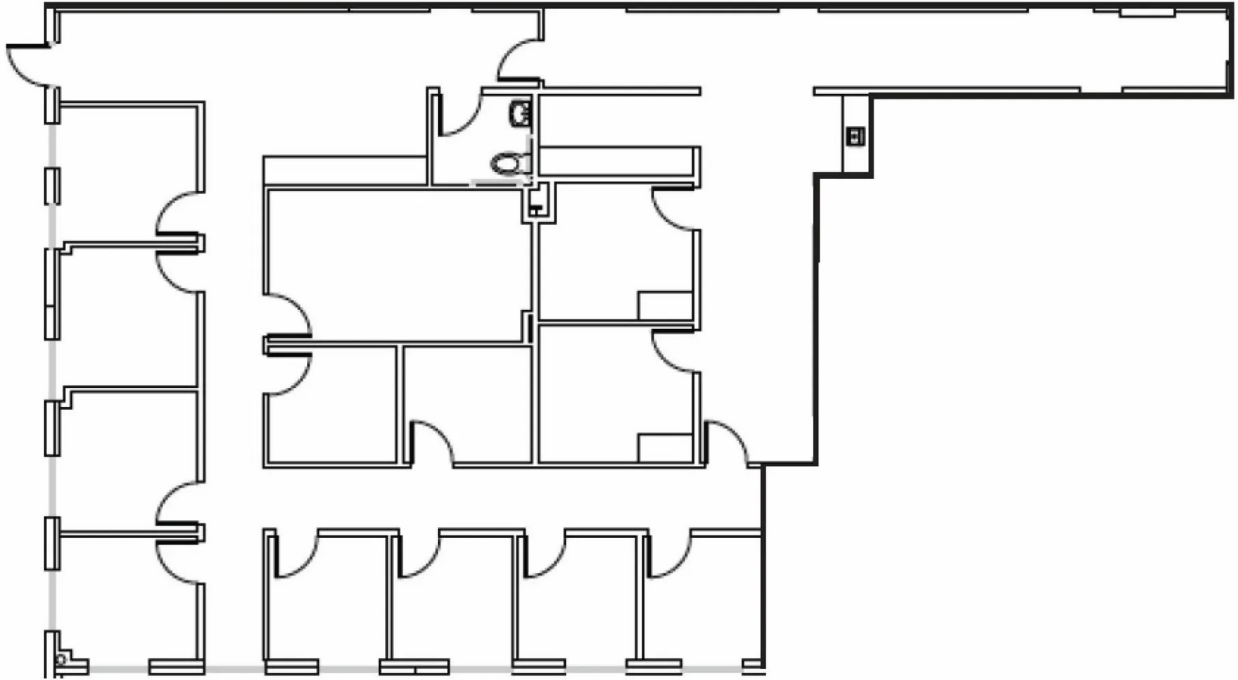
**Lincoln**

# NORTH TEXAS PROFESSIONAL BLDG

2817 S Mayhill Rd | Denton, TX 76208

Suite 105

3,491 SF



**Suite**

Suite 105

**Size**

3,491 SF

**Banks Newton**

214.461.2388  
bnewton@lpc.com

**Peter Shaw**

214.461.2302  
PShaw@lpc.com

**Elizabeth Madden**

214.461.2366  
emadden@lpc.com

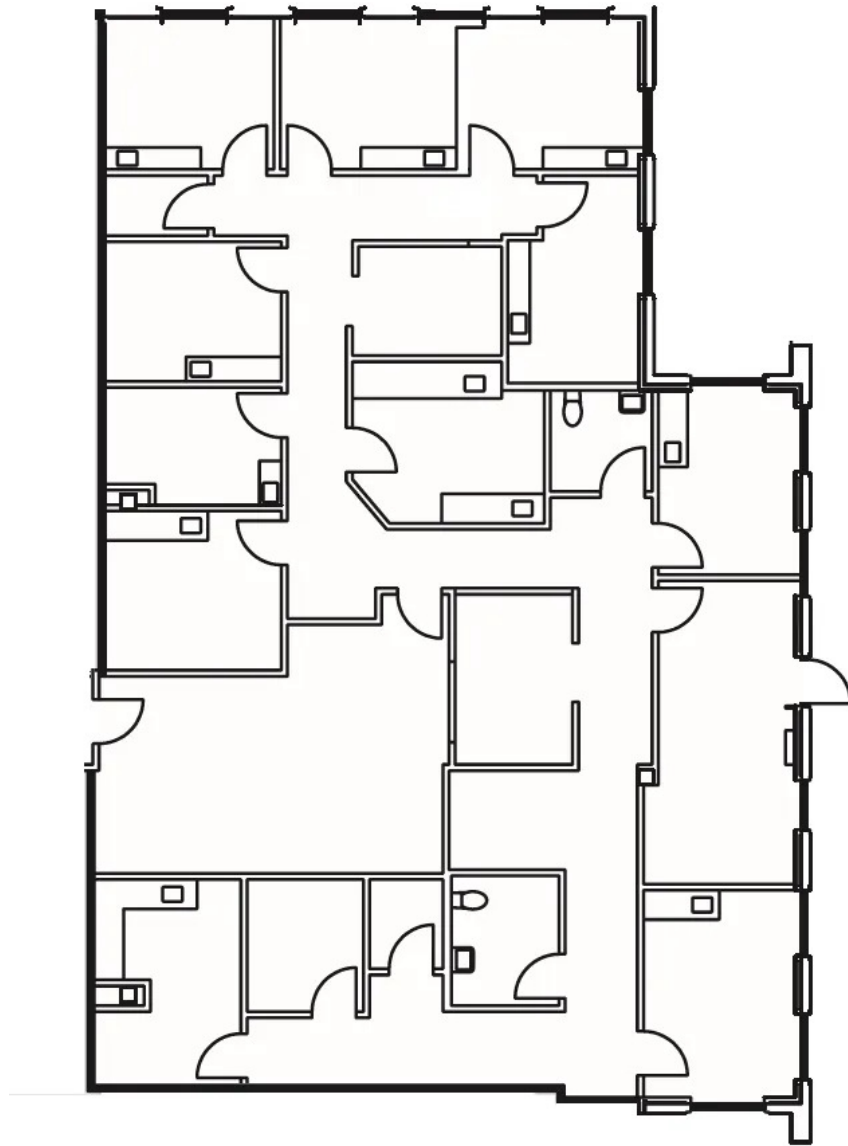
**Lincoln**

# NORTH TEXAS PROFESSIONAL BLDG

2817 S Mayhill Rd | Denton, TX 76208

Suite 115

3,954 SF



---

**Suite**

Suite 115

**Size**

3,954 SF

---

**Banks Newton**

214.461.2388  
bnewton@lpc.com

**Peter Shaw**

214.461.2302  
PShaw@lpc.com

**Elizabeth Madden**

214.461.2366  
emadden@lpc.com

**Lincoln**

# NORTH TEXAS PROFESSIONAL BLDG

2817 S Mayhill Rd | Denton, TX 76208

Suite 200

6,641 SF



Suite	Size
Suite 200	6,641 SF

**Banks Newton**

214.461.2388  
bnewton@lpc.com

**Peter Shaw**

214.461.2302  
PShaw@lpc.com

**Elizabeth Madden**

214.461.2366  
emadden@lpc.com

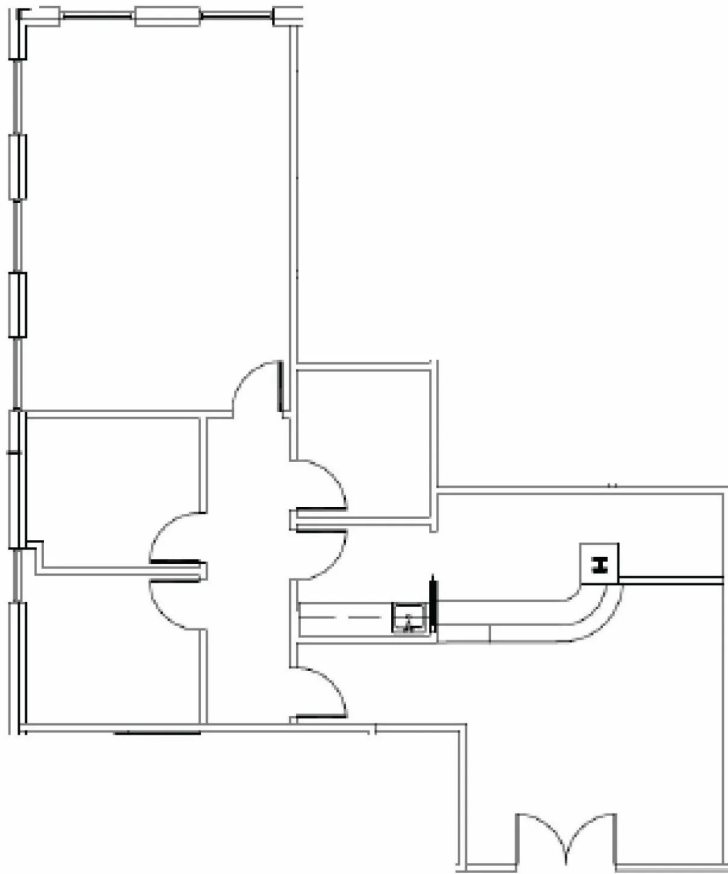
**Lincoln**

# NORTH TEXAS PROFESSIONAL BLDG

2817 S Mayhill Rd | Denton, TX 76208

Suite 260

1,498 - 6,260 SF



---

**Suite**

Suite 260

**Size**

1,498 - 6,260 SF

---

**Banks Newton**

214.461.2388  
bnewton@lpc.com

**Peter Shaw**

214.461.2302  
PShaw@lpc.com

**Elizabeth Madden**

214.461.2366  
emadden@lpc.com

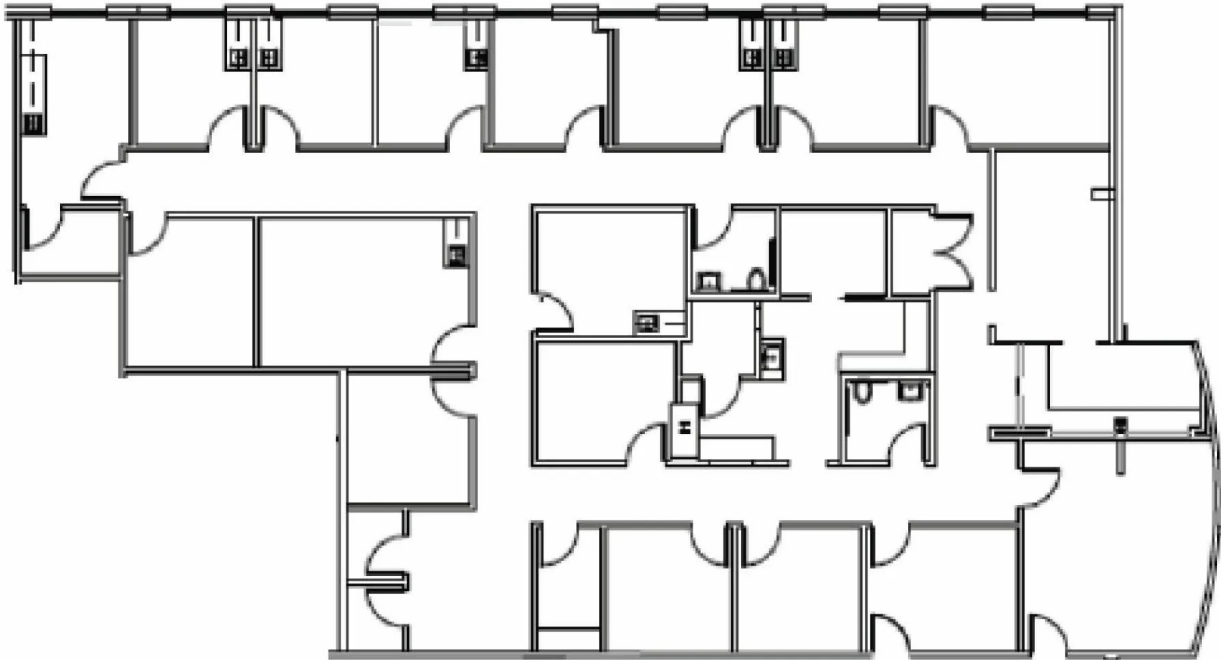
**Lincoln**

# NORTH TEXAS PROFESSIONAL BLDG

2817 S Mayhill Rd | Denton, TX 76208

Suite 270

4,762 - 6,260 SF



---

**Suite**

Suite 270

**Size**

4,762 - 6,260 SF

---

**Banks Newton**

214.461.2388  
bnewton@lpc.com

**Peter Shaw**

214.461.2302  
PShaw@lpc.com

**Elizabeth Madden**

214.461.2366  
emadden@lpc.com

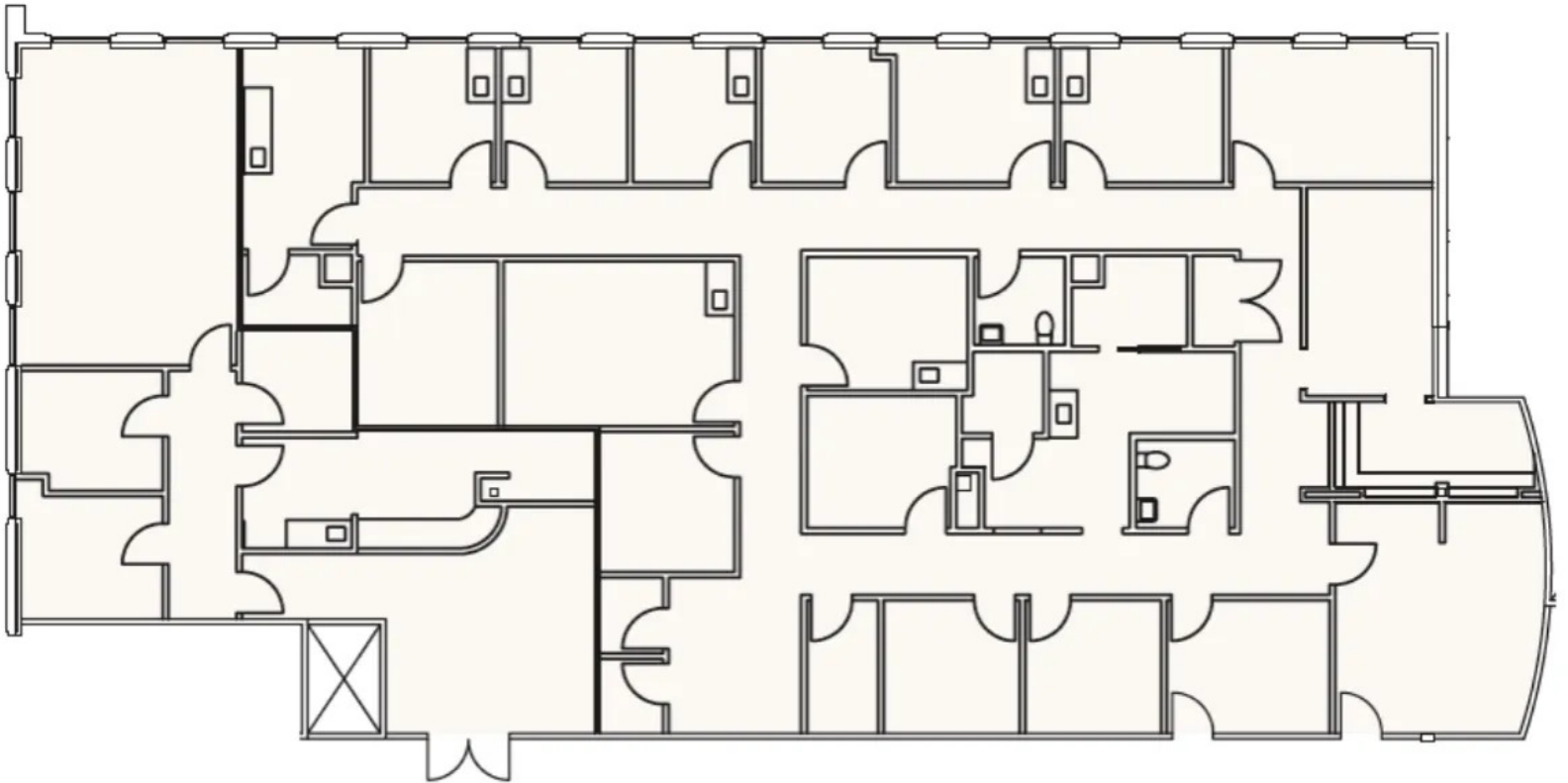
**Lincoln**

# NORTH TEXAS PROFESSIONAL BLDG

2817 S Mayhill Rd | Denton, TX 76208

Suite 260 & 270

1,498 - 6,260 SF



Suite	Size
Suite 260	1,498 - 6,260 SF
Suite 270	4,762 - 6,260 SF

**Banks Newton**

214.461.2388  
bnewton@lpc.com

**Peter Shaw**

214.461.2302  
PShaw@lpc.com

**Elizabeth Madden**

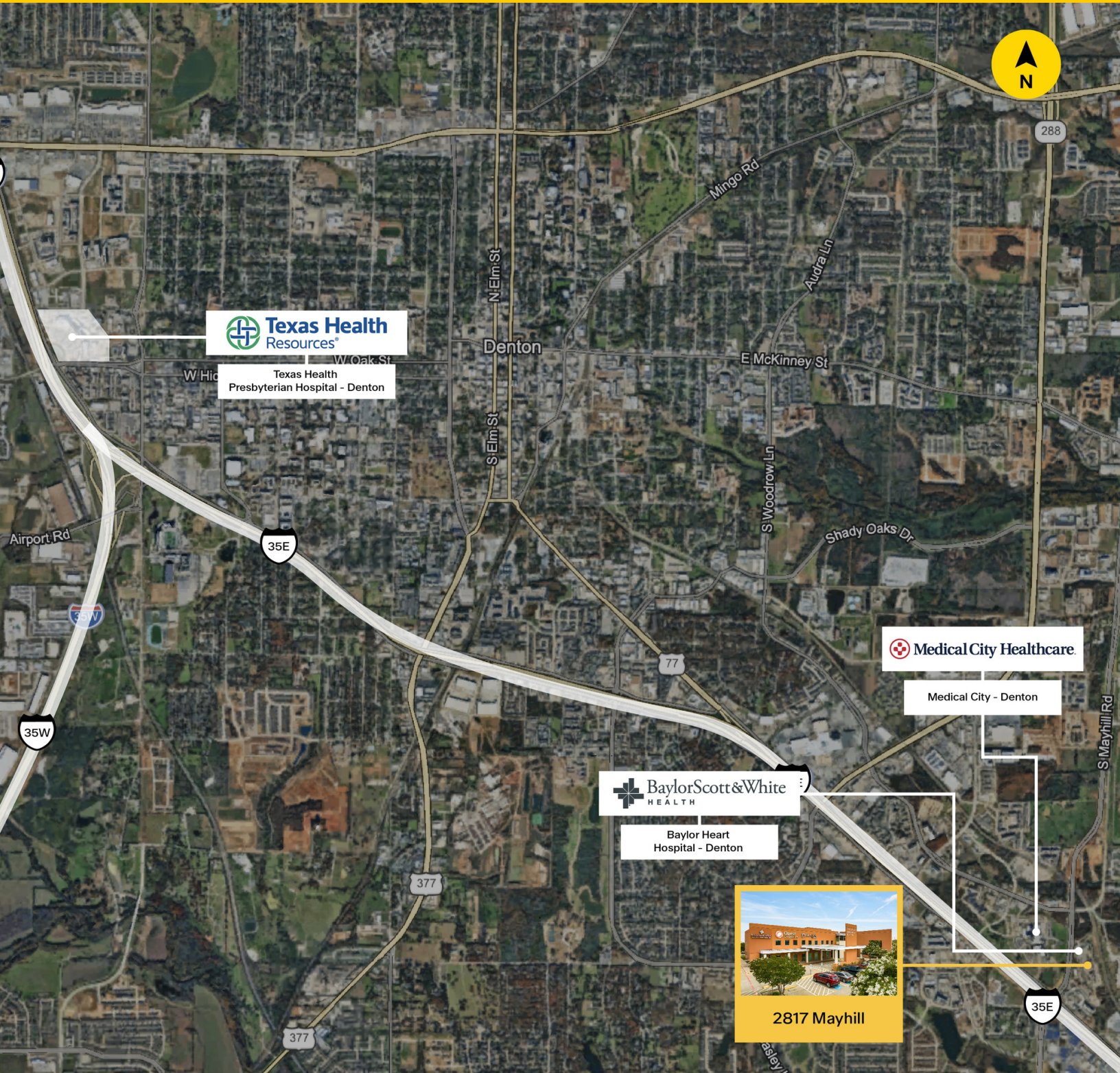
214.461.2366  
emadden@lpc.com

**Lincoln**

# NORTH TEXAS PROFESSIONAL BLDG

2817 S Mayhill Rd | Denton, TX 76208

Location Map  
1,498 - 6,641 SF



**Banks Newton**  
214.461.2388  
bnewton@lpc.com

**Peter Shaw**  
214.461.2302  
PShaw@lpc.com

**Elizabeth Madden**  
214.461.2366  
emadden@lpc.com

**Lincoln**



# NORTH TEXAS PROFESSIONAL BLDG

2817 S Mayhill Rd  
Denton, TX 76208

Leasing Information:  
214.461.2388

**Banks Newton**  
214.461.2388  
bnewton@lpc.com

**Peter Shaw**  
214.461.2302  
PShaw@lpc.com

**Elizabeth Madden**  
214.461.2366  
emadden@lpc.com

## Lincoln

8140 Walnut Hill Lane  
Suite 700  
Dallas, TX 75231

[www.lpc.com](http://www.lpc.com)