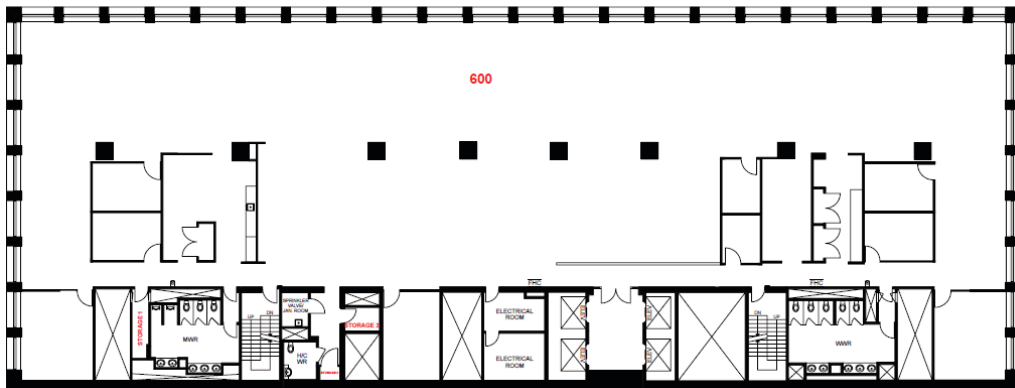


Updated: 2025

# Suite Features

21 Melinda Street  
—  
Commerce Court



**Suite  
600**

**Rentable Area  
13,608 SF**

**Availability:** Immediately

**Operating costs:**  
\$23.45 per SF

**Realty taxes:**  
\$11.84 per SF

**Total additional rent:**  
\$36.29 per SF

**Key features:**

- Contiguous block of 122,000 SF over 9 floors
- Built out space
- Efficient floor plates with minimal columns
- Large windows with ample natural light

**Kate LaBrash**  
Director, Office Leasing  
Sales Representative  
QuadReal Property Group, Brokerage

**T** 416-673-7491  
**E** kate.labrash@quadreal.com  
**W** www.quadreal.com

