

1501 LUNA ROAD

CARROLLTON, TX

15,002 SF AVAILABLE



BUILDING DETAILS

TOTAL AVAILABLE	15,002 SF
OFFICE AREA	Two Story Office Space
PARKING RATIO	5.00 / 1,000 SF
OWNERSHIP	Local



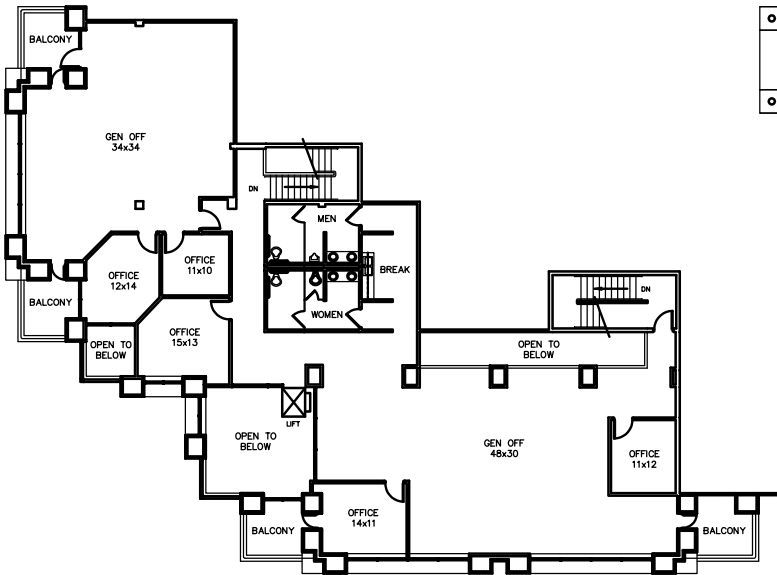
RYAN BOOZER
214.210.1414
ryan.booz@streamrealty.com

MAC HALL
214.560.2371
mac.hall@streamrealty.com

1501 LUNA ROAD

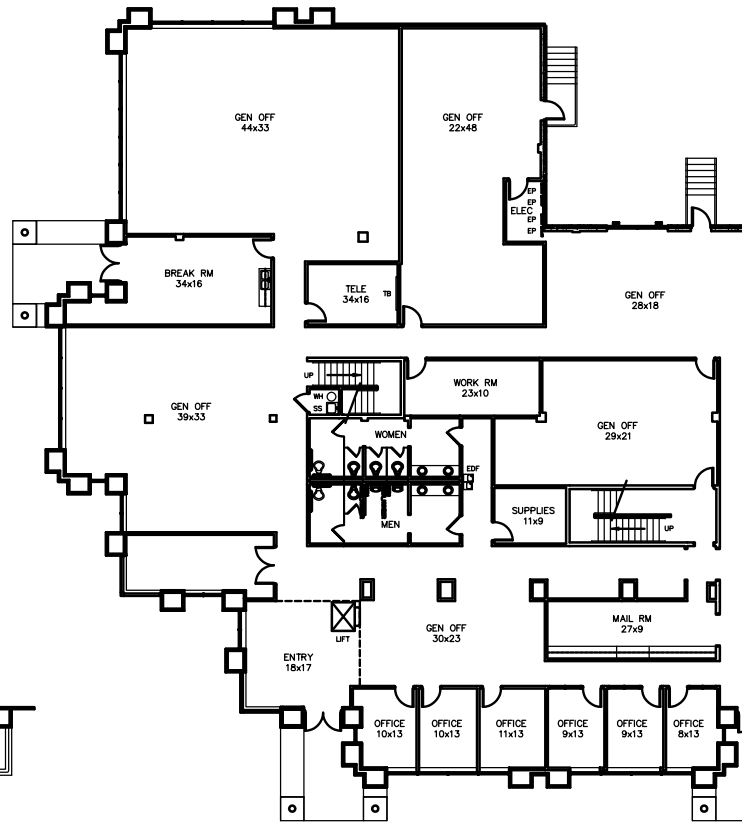
CARROLLTON, TX

15,002 SF AVAILABLE



MEZZANINE 'A'

0 10 25 50



FLOOR PLAN

0 10 25 50



RYAN BOOZER
214.210.1414
ryan.boozer@streamrealty.com

MAC HALL
214.560.2371
mac.hall@streamrealty.com