

FOR LEASE | CANNABIS CULTIVATION CAMPUS
3241, 3247 and 3253 Needles Highway, Needles, CA 92363



For Lease: \$2.10/SF + NNN



CAMERON RAWLINGS
Partner
DRE# 02102158
cameron@meadecommercial.com
760-534-2584

MICHAEL MEADE
Founder | Broker
DRE# 01480973
mmeade@meadecommercial.com
760-409-6474

72100 Magnesia Falls Drive, Suite 2, Rancho Mirage, CA 92270
meadecommercial.com | CA DRE Lic 02439728

Property Overview

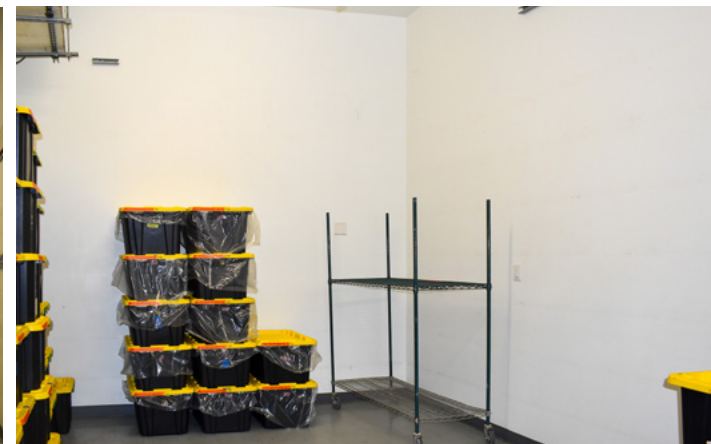
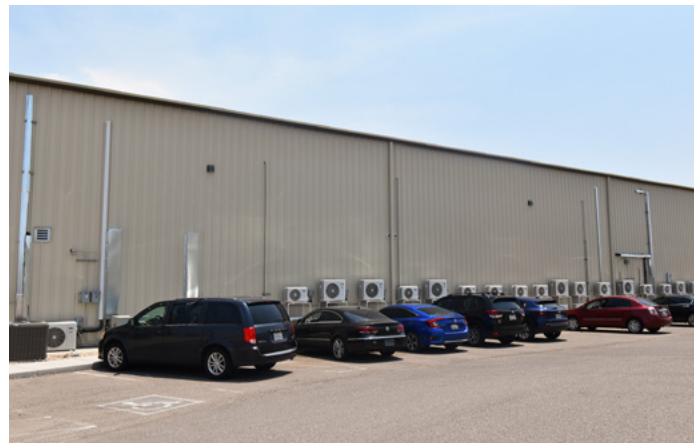
The Cannabis Cultivation Campus at Needles Highway consists of three (3) separate metal industrial buildings totaling 66,000 square feet permitted for cannabis cultivation and processing. Located in the “green” zone of Needles, the property has an active CUP for cannabis cultivation and manufacturing. The property has ample power with a cost of \$0.1285/kW consumed in excess of 395 kW per billing cycle.

3241 Needles Hwy is two-stories of cultivation warehouse totaling 40,000 sq. ft. 3253 Needles Hwy is a single-story cultivation warehouse totaling 20,000 sq. ft. 3247 Needles Hwy is a single-story processing facility totaling 6,000 sq. ft.

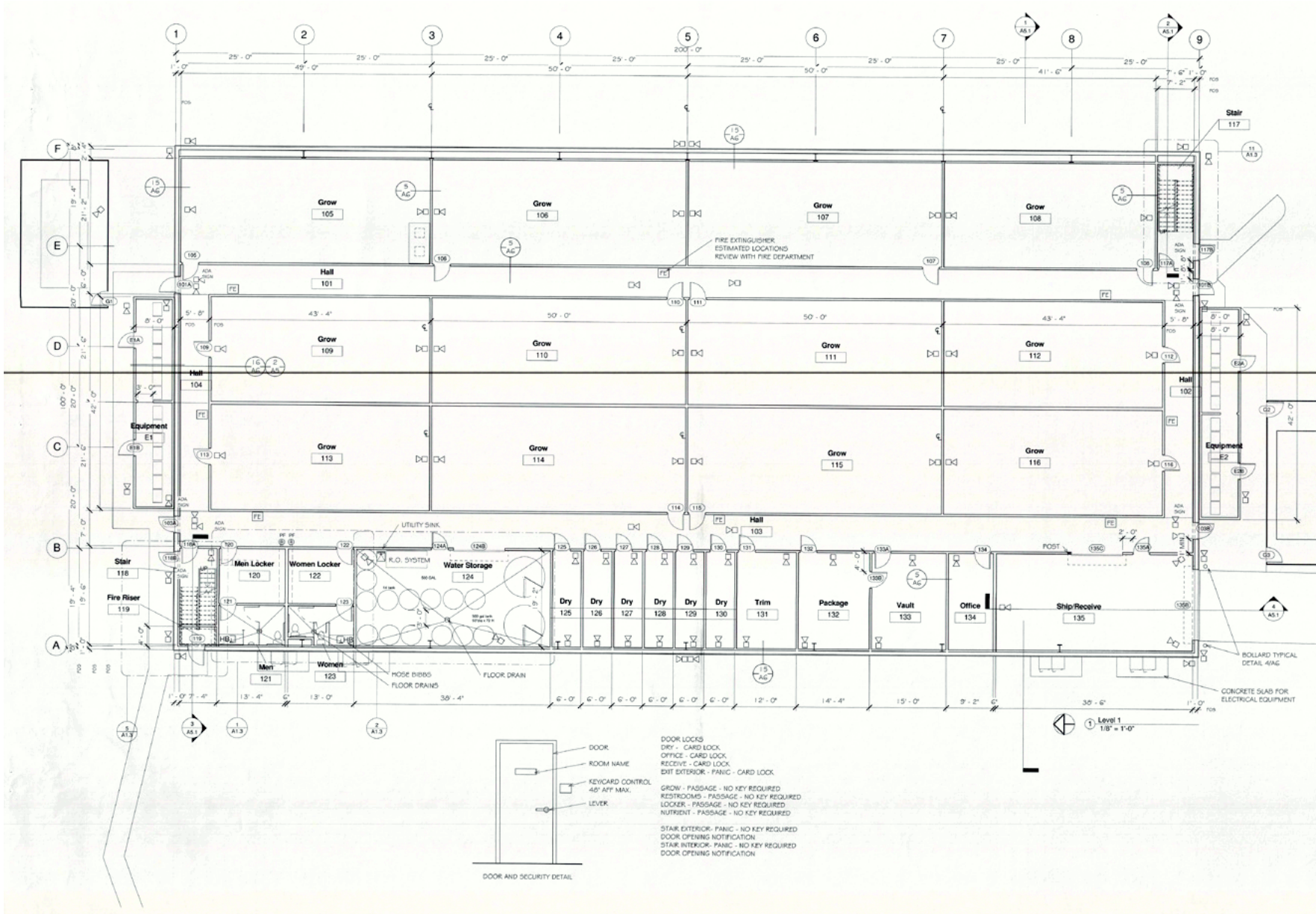
The property is located off the I-40 freeway by the Colorado River which also serves as the border of Arizona. The property is located approximately 255 miles East of Los Angeles near the borders of Nevada and Arizona.

3241 Needles Hwy:	40,000 sq. ft.
3247 Needles Hwy:	6,000 sq. ft.
3253 Needles Hwy:	20,000 sq. ft.
Total Building:	66,000 sq. ft.
Land Area:	7.52 AC (total development)
Type:	Cannabis/Industrial
Tenancy:	Single
Zoning:	C-3 (Highway Commercial)

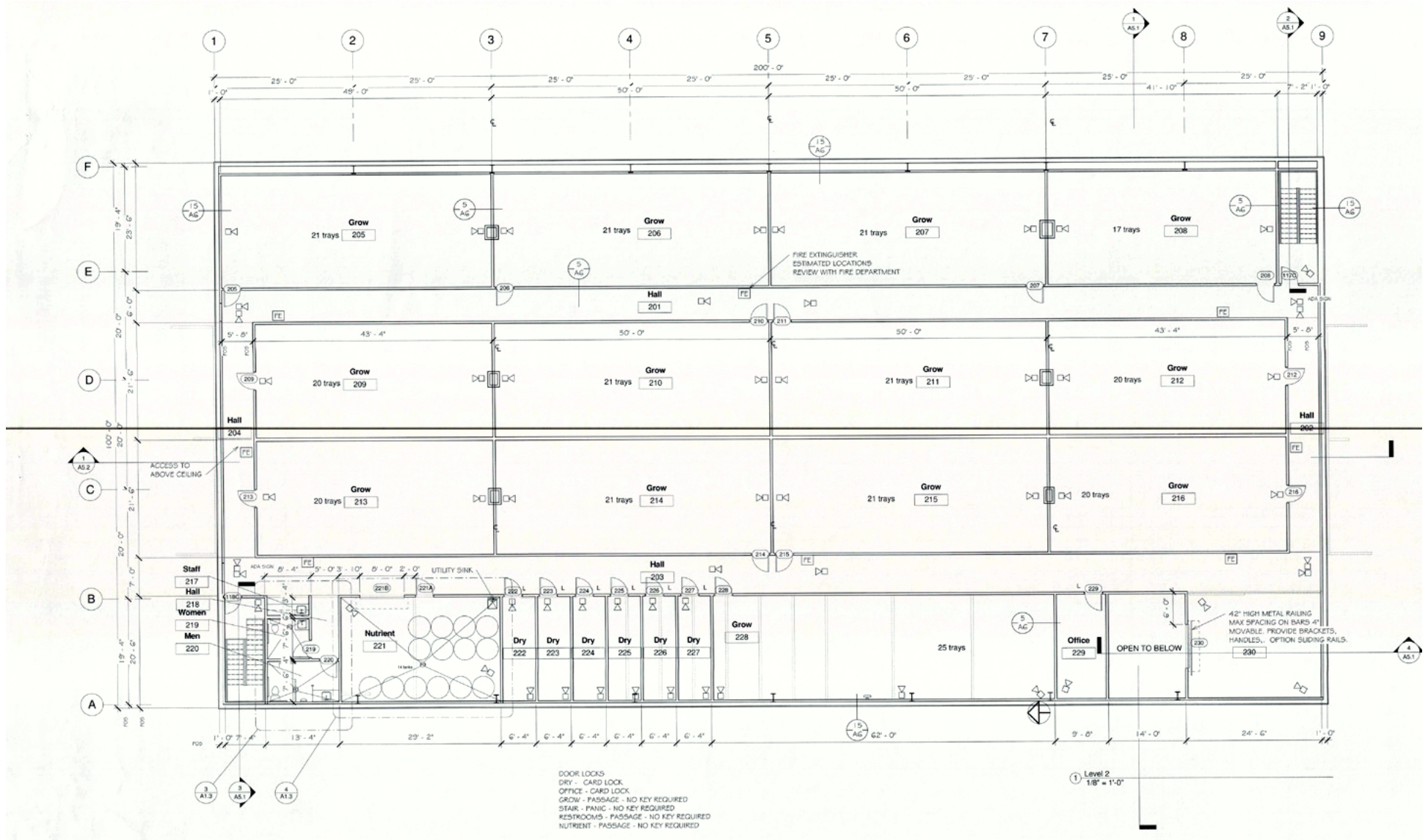




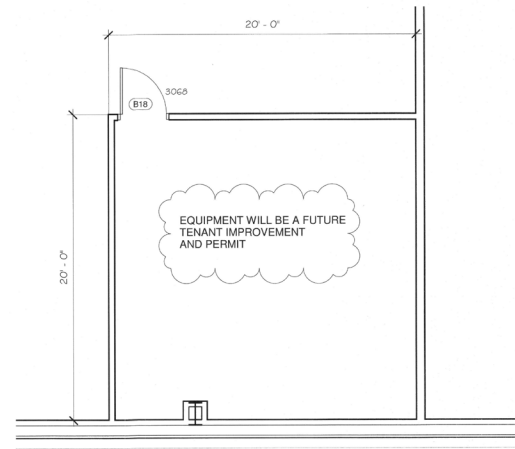
FIRST FLOOR | ±333 LIGHTS



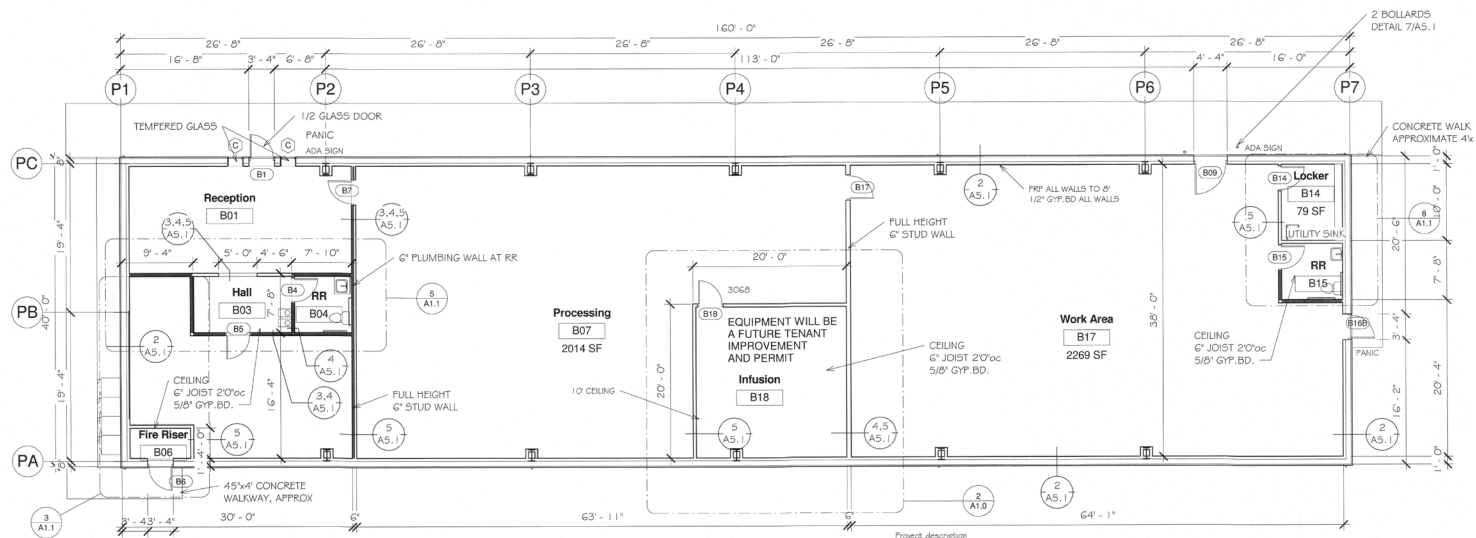
SECOND FLOOR | ±408 LIGHTS







2 PB Level 1 - Infusion
1/4" = 1'-0"



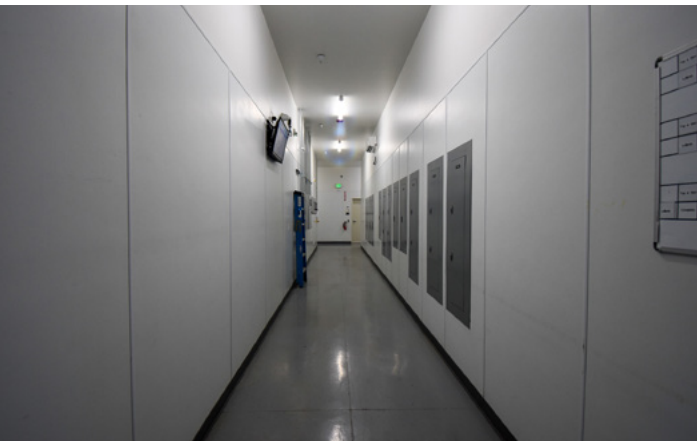
REFER TO SHEET A2
FOR CEILING JOIST LOCATIONS

Fire Extinguisher Note:

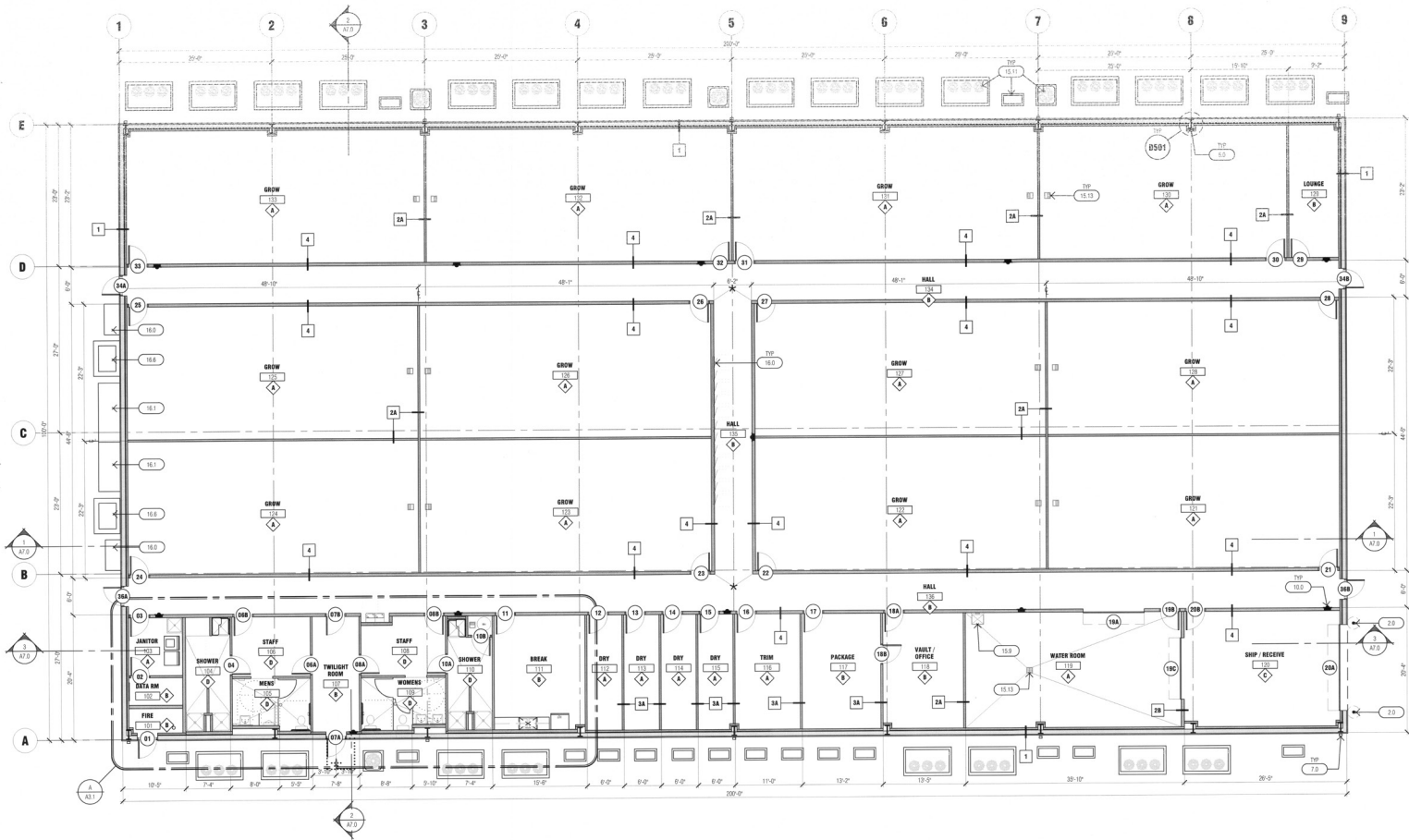
- Provide 2A10BC Fire Extinguishers within 75 feet walking distance. Extinguishers are not to exceed one Extinguisher for every 3,000 square feet of building area. Locations are to be confirmed by the Fire Department. 2 per floor.

- Project description
- reception: no change
 - fire riser: no change
 - Office: remove stairs, include space into office extraction Rooms. there were 3. Now there is one larger with a C1D1 laboratory. Another space is empty for the moment. However plan for a nursery.
 - South Stairs: remove.
 - Locker and Restroom to remain
 - HVAC and Power: Extraction CONVENTIONAL HVAC 5 TON, C1D1 own system. Work space: future nursery, conventional HVAC 5 ton for now?

1 PB Level 1
1/8" = 1'-0"



±330 LIGHTS (1st Hall), ±135 LIGHTS (2nd Hall)



FLOOR PLAN 1/8" = 1'-0"

- 1 SEE DOOR SCHEDULE SHEET A10.0
- 2 SEE DOOR SCHEDULE SHEET A1.1
- 3 SEE WALL SCHEDULE SHEET A1.1
- 4 SEE KEYED NOTES SHEET A1.1

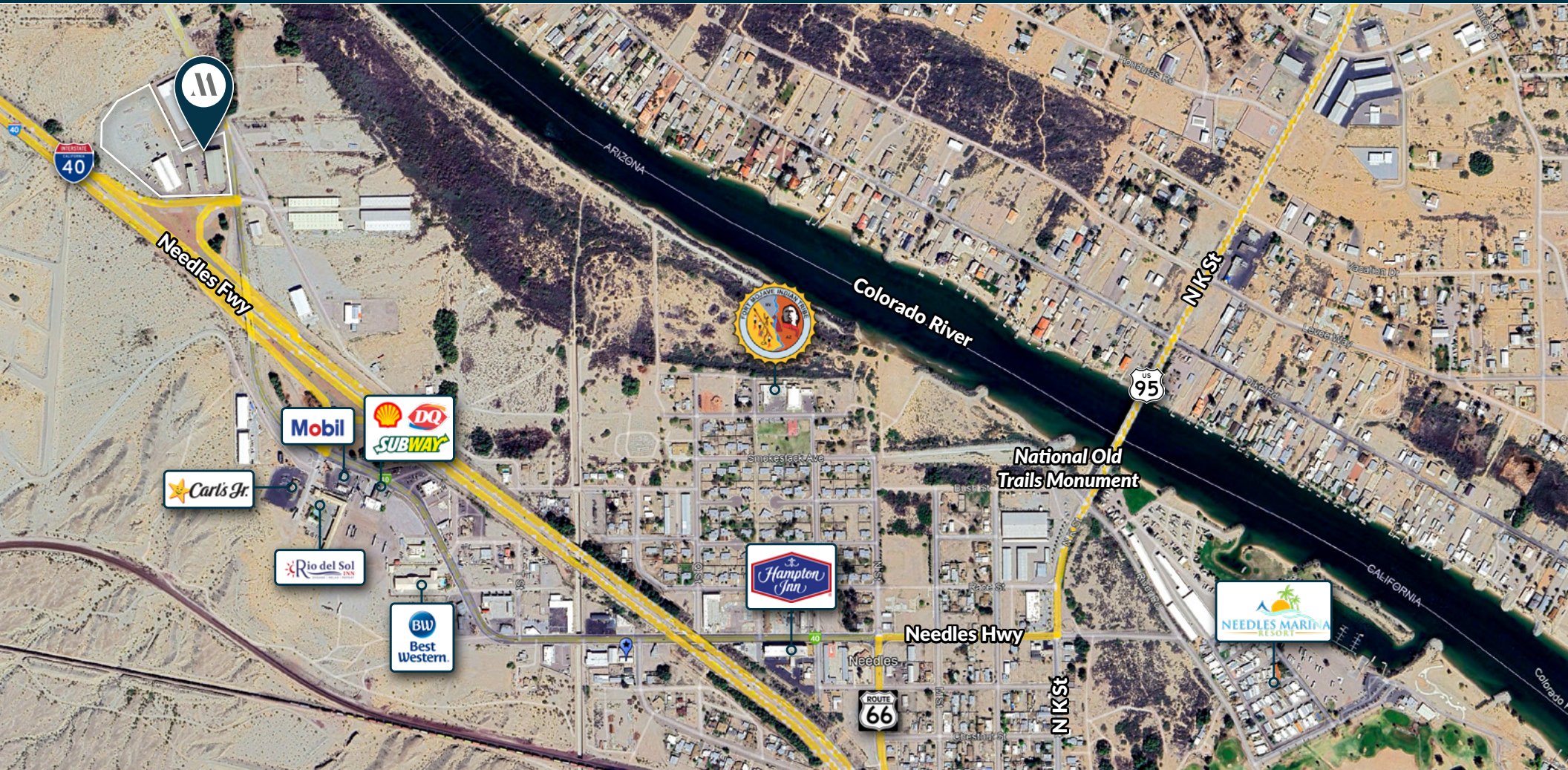


5.24.2018
SFA
SEABURY
FRITZ
ARCHITECTS
1602 ADD - FLR : file
Needles, CA
5002 highway 95
suite 105
fort mohave
arizona
86426
929.577.0077
www.sfa.us

project
Needles, CA
**Medical
Investor
Holdings
Building 3**
1602 ADD - FLR : file
1602 : project
08 : drawn
0819 : date
FLOOR PLAN : title

AERIAL MAP | DEMOGRAPHICS

FOR LEASE | CANNABIS CULTIVATION CAMPUS
3241, 3247 and 3253 Needles Highway, Needles, CA 92363



DEMOGRAPHICS	1-mile	3-mile	5-mile
Population	2,917	9,708	12,459
Households	1,233	3,922	5,043
Median Household Income	\$42,042	\$42,141	\$42,716
Average Daily Traffic (ADT)	I-40: 14,294 ADT		

YOUR ADVISORS



CAMERON RAWLINGS

Partner

DRE# 02102158

cameron@meadecommercial.com

760-534-2584



MICHAEL MEADE

Founder | Broker

DRE# 01480973

mmeade@meadecommercial.com

760-409-6474

DISCLAIMER

This Memorandum contains select information pertaining to the Property and the Owner, and does not purport to be all-inclusive or contain all or part of the information which prospective investors may require to evaluate a purchase of the Property. The information contained in this Memorandum has been obtained from sources believed to be reliable, but has not been verified for accuracy, completeness, or fitness for any particular purpose. All information is presented "as is" without representation or warranty of any kind. Such information includes estimates based on forward-looking assumptions relating to the general economy, market conditions, competition and other factors which are subject to uncertainty and may not represent the current or future performance of the Property. All references to acreages, square footages, and other measurements are approximations. This Memorandum describes certain documents, including leases and other materials, in summary form. These summaries may not be complete nor accurate descriptions of the full agreements referenced. Additional information and an opportunity to inspect the Property may be made available to qualified prospective purchasers. You are advised to independently verify the accuracy and completeness of all summaries and information contained herein, to consult with independent legal and financial advisors, and carefully investigate the economics of this transaction and Property's suitability for your needs. **ANY RELIANCE ON THE CONTENT OF THIS MEMORANDUM IS SOLELY AT YOUR OWN RISK.**

The Owner or Broker expressly reserves the right, at its sole discretion, to reject any or all expressions of interest or offers to purchase the Property, and/or to terminate discussions at any time with or without notice to you. All offers, counteroffers, and negotiations shall be non-binding and neither Meade Commercial, Inc. nor the Owner shall have any legal commitment or obligation except as set forth in a fully executed, definitive purchase and sale agreement delivered by the Owner.

COPYRIGHT NOTICE

©2026 Meade Commercial, Inc. All Rights Reserved.
Meade Commercial, INC. Broker Lic. 02439728
72100 Magnesia Falls Drive, Suite 2, Rancho Mirage, CA 92270
Phone Number: 760-837-1880 | meadecommercial.com

