

FREESTAND W/ YARD



29,228 SF + 1.7 ACRES AVAILABLE **FOR LEASE**

254 ATTWELL DRIVE

ETOBICOKE, ON



254 ATTWELL DRIVE

ETOBICOKE, ON



PROPERTY HIGHLIGHTS

- Premium location
- Freestanding building with yard located in the heart of Toronto's West Humber-Clairville industrial hub
- Air-conditioned warehouse
- Professional office space with high-end finishes
- Immediate proximity to Pearson Airport and major 400-series highways
- Both truck level and drive-in shipping
- Crane rails in place to support overhead cranes
- Access to ample amenities, public transportation & large employment base
- Ideal for warehouse distribution, light manufacturing, contractors and/or a corporate headquarters
- Great curb appeal
- LED lighting in warehouse

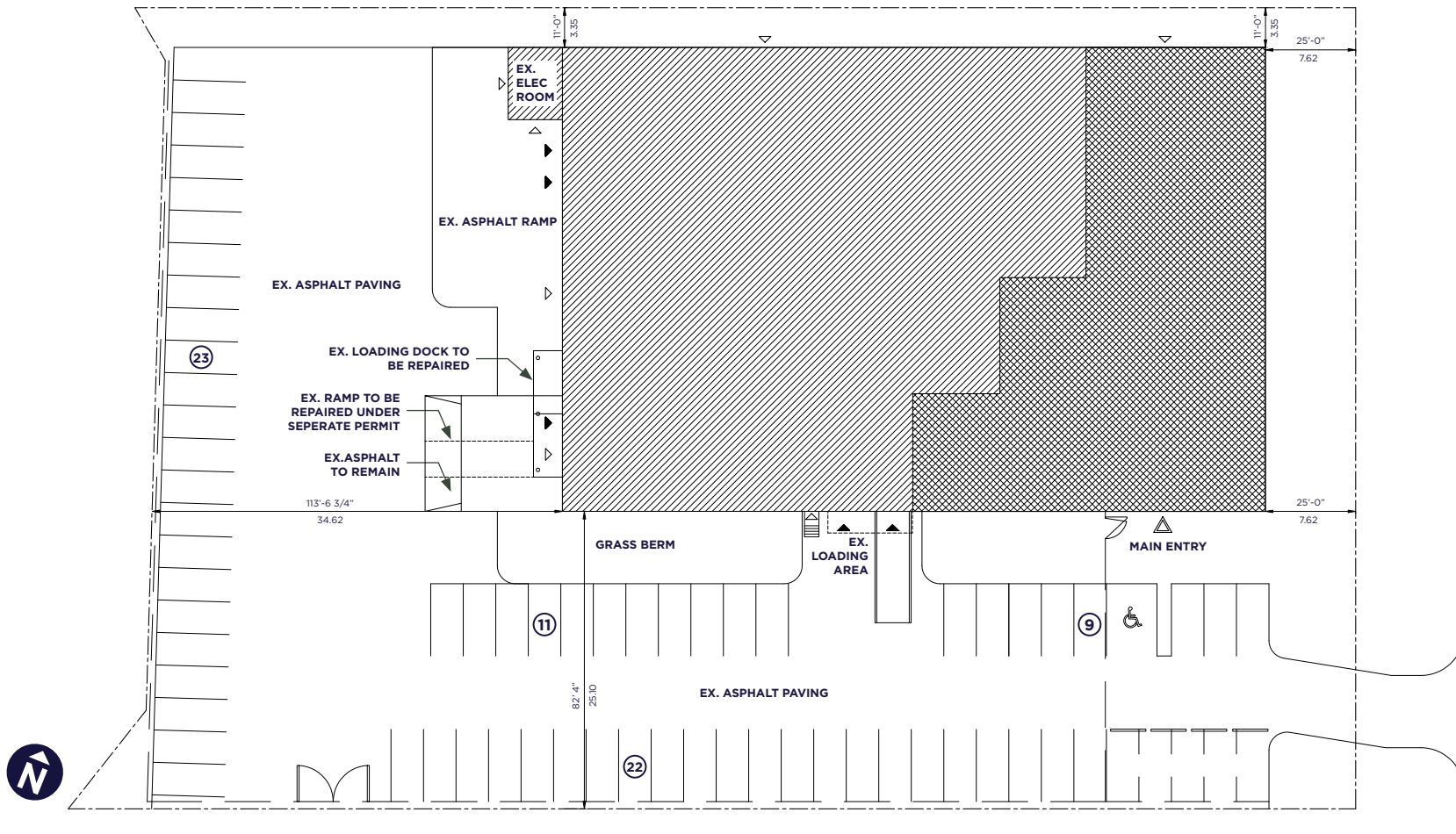
PROPERTY DETAILS

TOTAL SIZE:	29,228 SF
OFFICE SIZE:	30%
ACREAGE:	1.7 Acres
SHIPPING:	3 Truck Level, 1 Drive-in
CLEAR HEIGHT:	18'
ZONING:	E1
SPRINKLERS:	Yes
ASKING PRICE:	\$21.95 PSF NET
TAXES 2025:	\$4.22 PSF
POSSESSION DATE:	November 1st, 2026

254 ATTWELL DRIVE

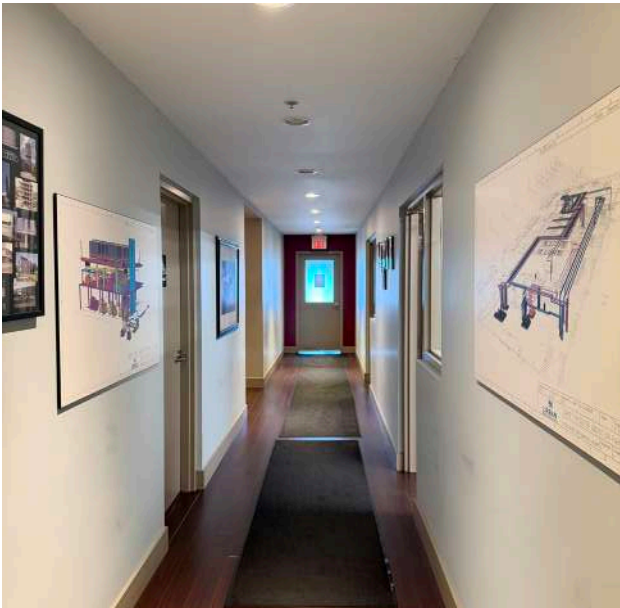
ETOBICOKE, ON

FLOOR PLAN



ATTWELL DRIVE

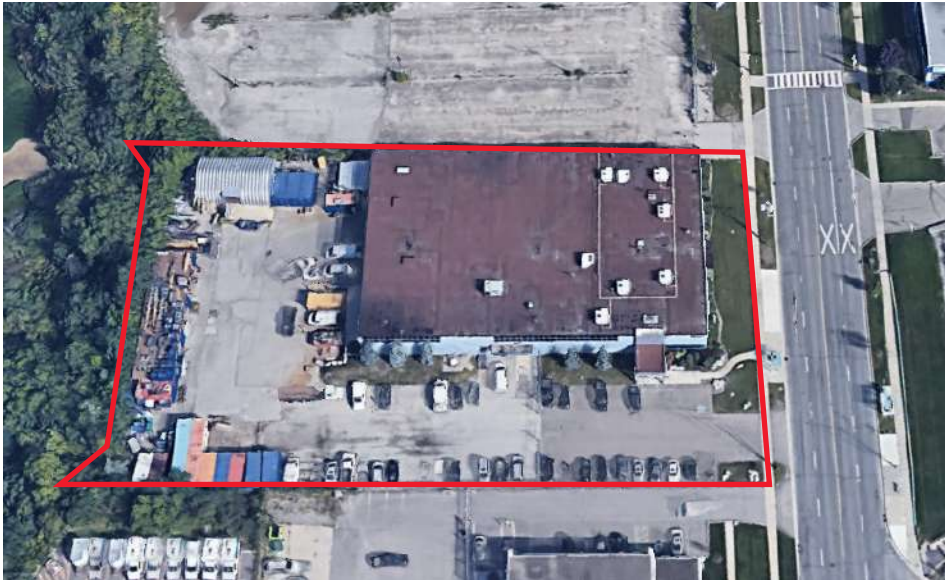
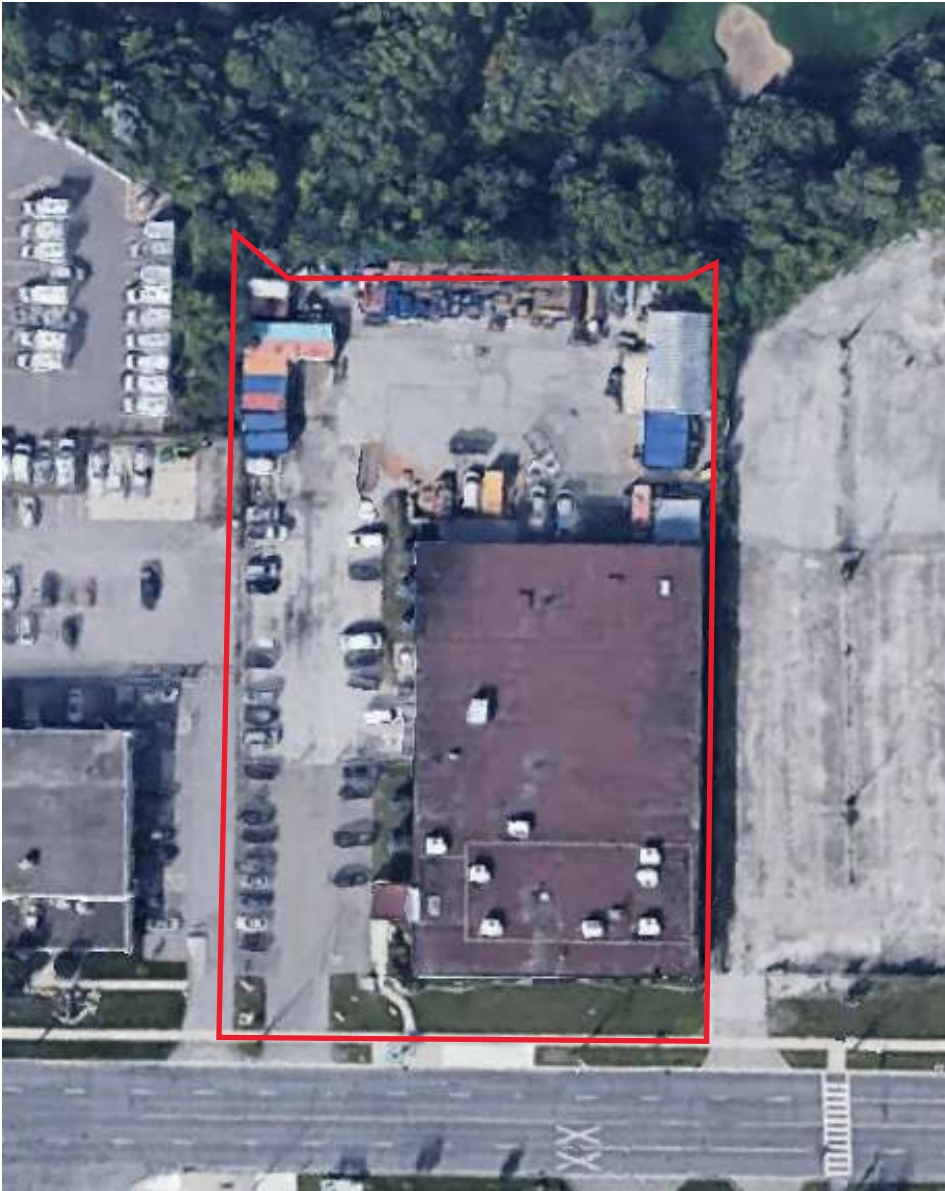
254 ATTWELL DRIVE ETOBICOKE, ON



254 ATTWELL DRIVE
ETOBICOKE, ON



254 ATTWELL DRIVE ETOBICOKE, ON



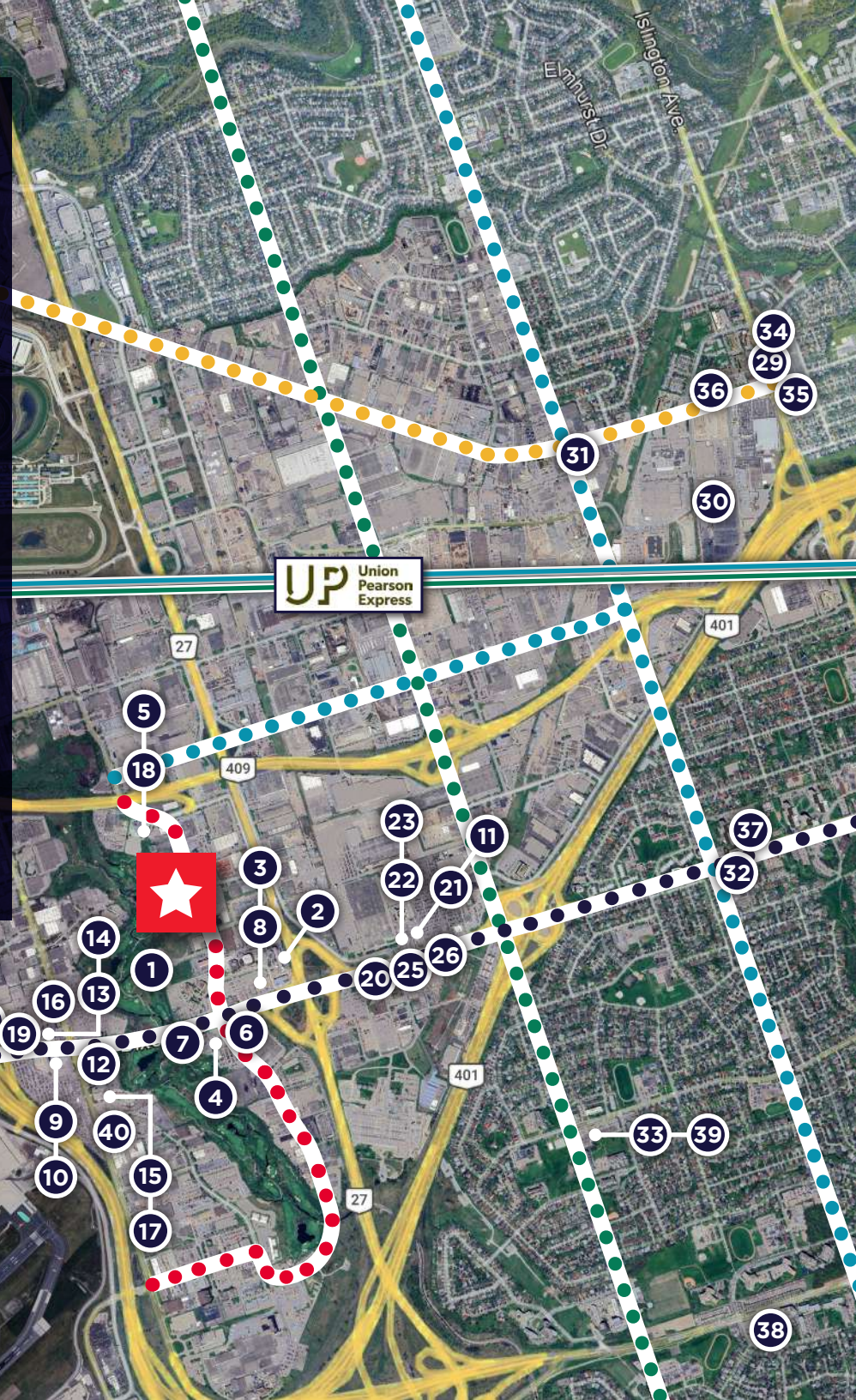
AMENITIES

- | | |
|--------------------------------------|-----------------------------------|
| 1 Moxies Dixon Road Restaurant | 21 Burger King |
| 2 The Cannery Kitchen and Social | 22 Tim Hortons |
| 3 Scaddabush Italian Kitchen & Bar | 23 Harvey's |
| 4 Olio Grille | 24 Bistro YYZ & Patio |
| 5 Attwell Food | 25 Shell |
| 6 Montana's BBQ & Bar | 26 Petro-Canada & Car Wash |
| 7 Chop Steakhouse & Bar | 27 Petro-Canada |
| 8 Jack Astor's Bar & Grill Airport | 28 Shell |
| 9 Turtle Jack's Etobicoke | 29 Scotiabank |
| 10 Starbucks Coffee Company | 30 BMO Bank of Montreal |
| 11 Pür & Simple | 31 RBC Royal Bank |
| 12 Wayside Social - Eatery Cafe Bar | 32 TD Canada Trust Branch and ATM |
| 13 Church's Texas Chicken | 33 RBC Royal Bank |
| 14 Lone Star Texas Grill | 34 Fresh Value |
| 15 Chuck's Roadhouse Bar & Grill | 35 Walmart |
| 16 Westside Social | 36 Rexdale Grocers |
| 17 The Bistro - Eat. Drink. Connect. | 37 Beyond Convenience |
| 18 Joseph's Hotdog Stand | 38 Metro |
| 19 Crosswinds Restaurant and Bar | 39 Starfish Market Etobicoke |
| 20 Starbucks Coffee Company | 40 Brazilian Market |

BUS ROUTES

- 112 ●●●●●●●●
- 52 ●●●●●●●●
- 45 ●●●●●●●●
- 46 ●●●●●●●●
- 37 ●●●●●●●●

TORONTO PEARSON INTERNATIONAL AIRPORT





FOR MORE INFORMATION, CONTACT:

RAYMOND RAMNAUTH SIOR, CCIM

Senior Vice President

+1 905 501 6494

raymond.ramnauth@cushwake.com

RICHARD BURTON SIOR

Vice President

+1 905 501 6415

richard.burton@cushwake.com

JEREMY SMITH

Associate

+1 905 361 3269

jeremy.smith2@cushwake.com



©2026 Cushman & Wakefield. All rights reserved. The information contained in this communication is strictly confidential. This information has been obtained from sources believed to be reliable but has not been verified. NO WARRANTY OR REPRESENTATION, EXPRESS OR IMPLIED, IS MADE AS TO THE CONDITION OF THE PROPERTY (OR PROPERTIES) REFERENCED HEREIN OR AS TO THE ACCURACY OR COMPLETENESS OF THE INFORMATION CONTAINED HEREIN, AND SAME IS SUBMITTED SUBJECT TO ERRORS, OMISSIONS, CHANGE OF PRICE, RENTAL OR OTHER CONDITIONS, WITHDRAWAL WITHOUT NOTICE, AND TO ANY SPECIAL LISTING CONDITIONS IMPOSED BY THE PROPERTY OWNER(S). ANY PROJECTIONS, OPINIONS OR ESTIMATES ARE SUBJECT TO UNCERTAINTY AND DO NOT SIGNIFY CURRENT OR FUTURE PROPERTY PERFORMANCE. PD-189228-V8