



# For Lease

1071 Bloomfield Avenue  
West Caldwell, NJ



## Property Highlights

- 3,400 SF available
- Co-tenant: Meineke
- Ample onsite parking
- Next door to Stop & Shop
- New ShopRite across the street

## Financial Information

- Asking rent: Upon request
- Taxes/CAM: +/- \$7.50 PSF

## Traffic Counts

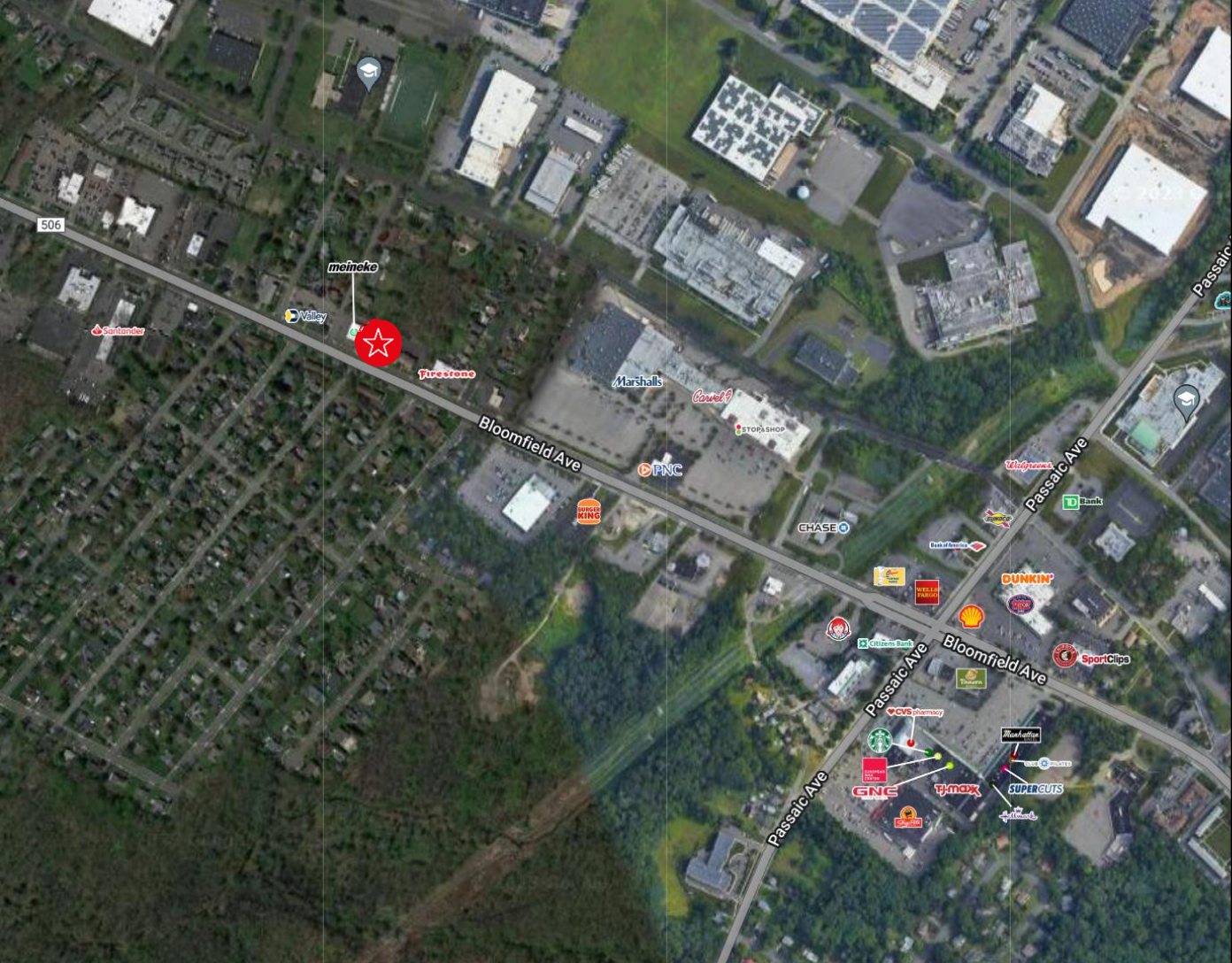
- Bloomfield Avenue: 20,272 VPD
- Kirkpatrick Lane: 22,018 VPD

Site Aerial



**meineke**

3,400 SF  
Available



# Demographics



**52,027**  
Population



**55,312**  
Employees



**\$124,626**  
Median  
Household  
Income



**5,069**  
Businesses

Demographics taken within 3 miles  
Source: Costar, 2024

## Contact

**Craig Parcels**  
Vice President  
Direct: +1 973 829 4780  
Mobile: +1 201 618 7223  
craig.parcels@jll.com



Although information has been obtained from sources deemed reliable, JLL does not make any guarantees, warranties or representations, express or implied, as to the completeness or accuracy as to the information contained herein. Any projections, opinions, assumptions or estimates used are for example only. There may be differences between projected and actual results, and those differences may be material. JLL does not accept any liability for any loss or damages suffered by any party resulting from reliance on this information. If the recipient of this information has signed a confidentiality agreement with JLL regarding this matter, this information is subject to the terms of that agreement. ©2023. Jones Lang LaSalle IP, Inc. All rights reserved.