

Washington Executive Park

6303 26 Mile Road, Suite 110, Washington Township, MI 48094



Details:

Available: Now

Lower Level

SF Available: 1,220ft²

Rent: \$ 25.00/ft²

CAM: \$ 0

Service Type: Full-Service

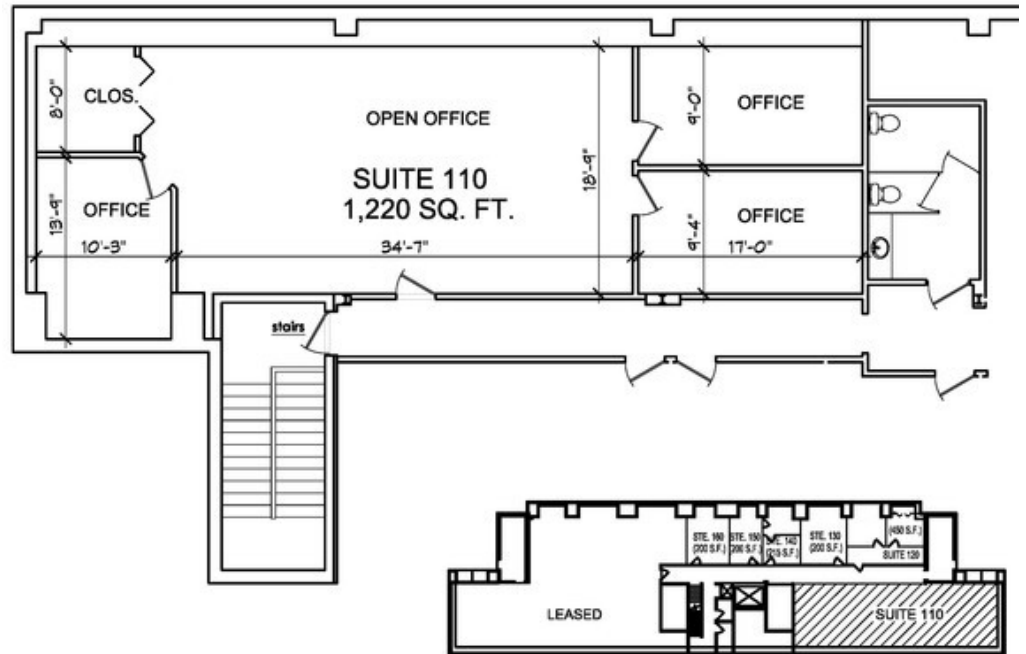
Gross Lease Including

Utilities

Full Build Out

Ideal for Office or Medical

Industry



LOWER LEVEL KEY PLAN
NOT TO SCALE

Beautifully renovated and owner-occupied building in a prime location at 26 Mile and Mound Road with easy access to Van Dyke Freeway. Professionally manicured grounds and clean common areas. Ideal for insurance agency, accountant, attorney, financial planning, engineering, etc. Offers Common Hallways, Restrooms, Elevator, Security Lighting and Parking Lot. Rent includes all utilities (Gas/Electric/Water).



Contact for Leasing Information
586.786.7600 | info@gallocompanies.com
6303 26 Mile Rd.
2nd Floor, 2nd Floor
Washington Twp., MI 48094