

Commercial Condo for Sale

**95 Vandam Street
New York, N.Y. 10013
(Between Greenwich & Hudson)**



**7900sf
4400sf Ground
3500sf Lower
level
Zoning: M1-6
Retail, Office,
Showroom Use.**

COMPASS COMMERCIAL



COMPASS COMMERCIAL



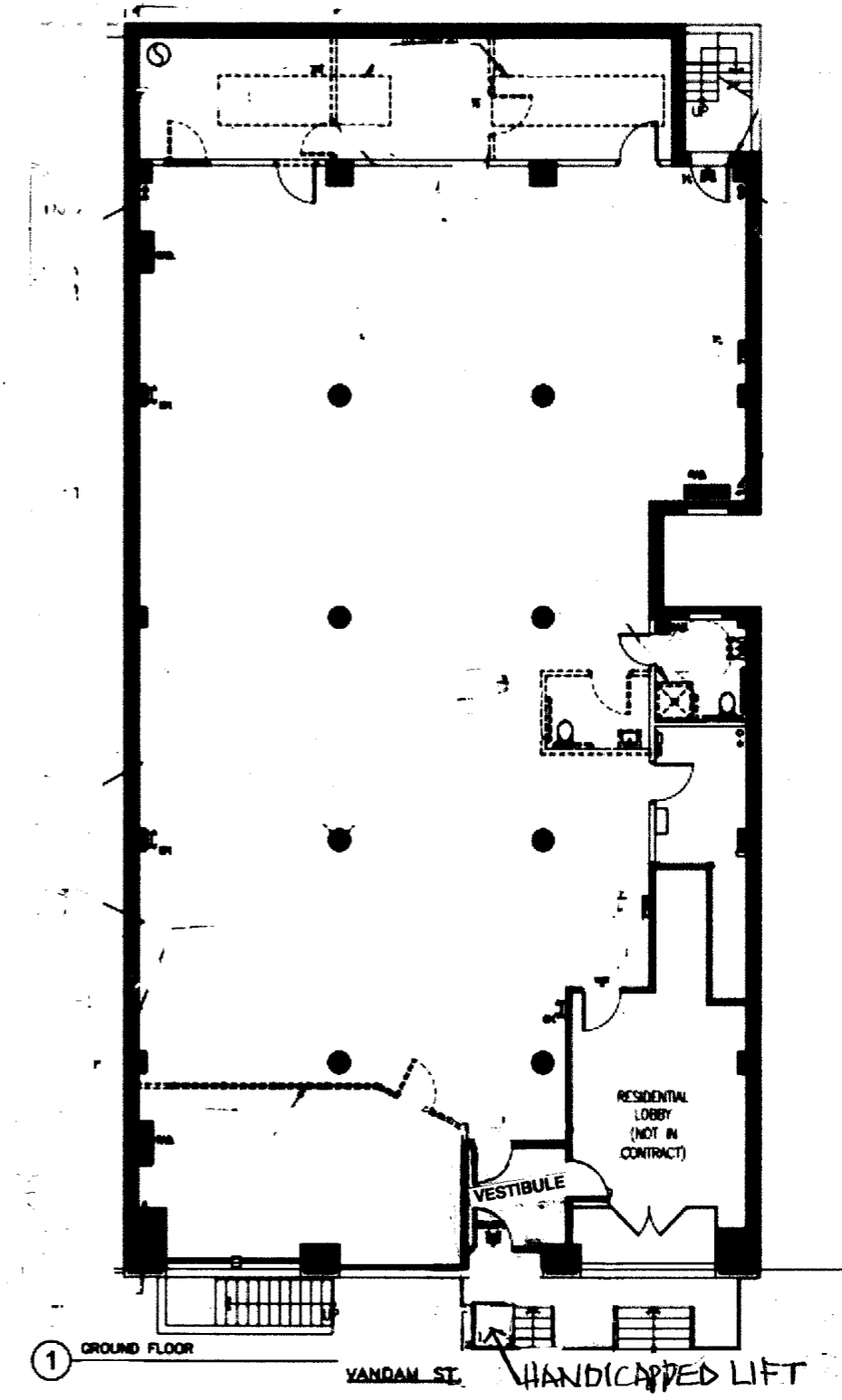
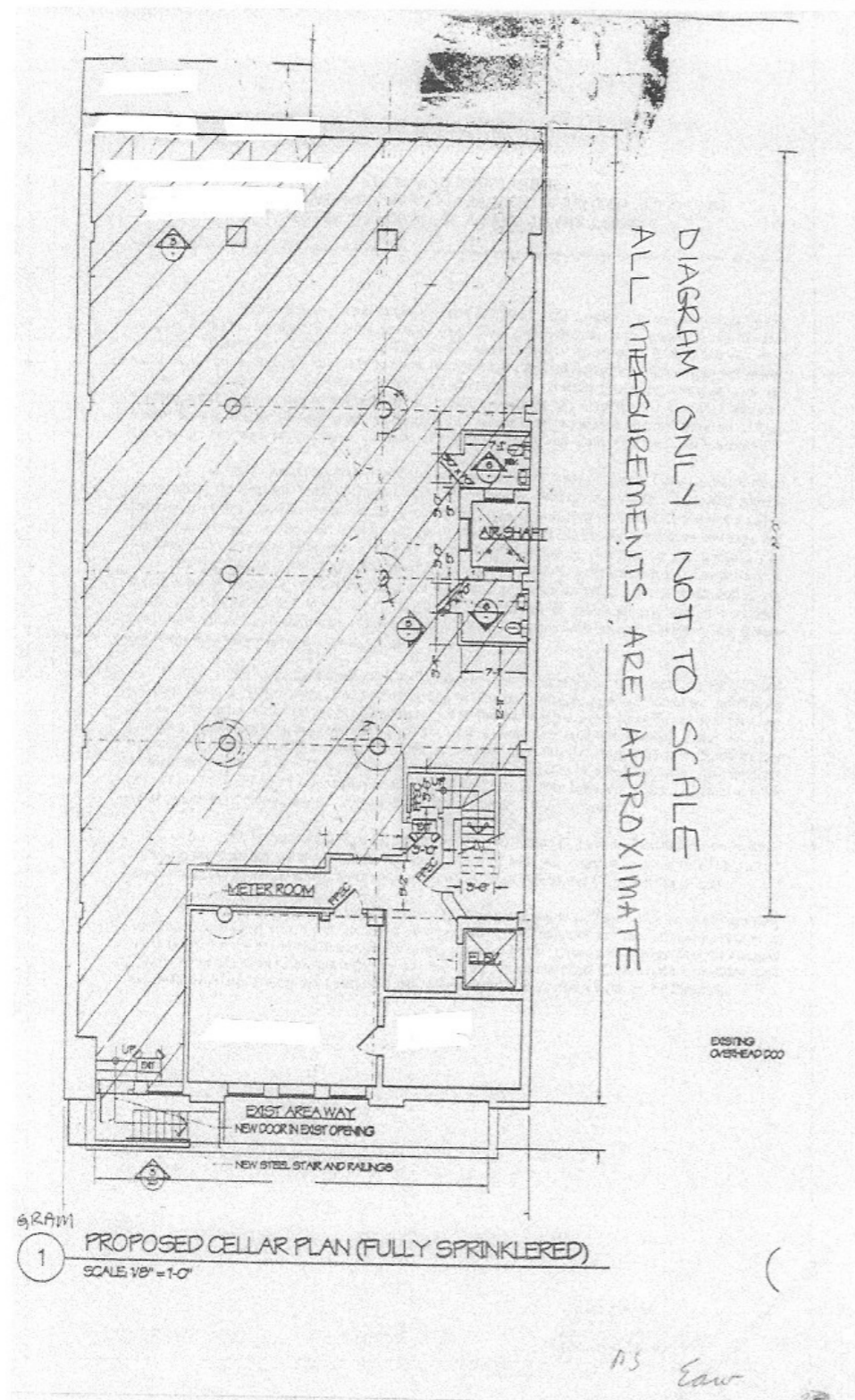


DIAGRAM : ALL MEASUREMENTS ARE APPROXIMATE

Corporate Neighbors:

**Disney, Google,
Publicis, Warby
Parker, Squarespace,
Oscar Health, Harry's.**

Restaurants/Coffee:

**La Colombe,
Westville, Cava,
Wonder, Maman,
Glaze, Just Salad,
Hotel Hugo.**

Transportation: 1,C,E

**Monthly
Maintenance: \$3850**

**Monthly
Taxes: \$12,600**