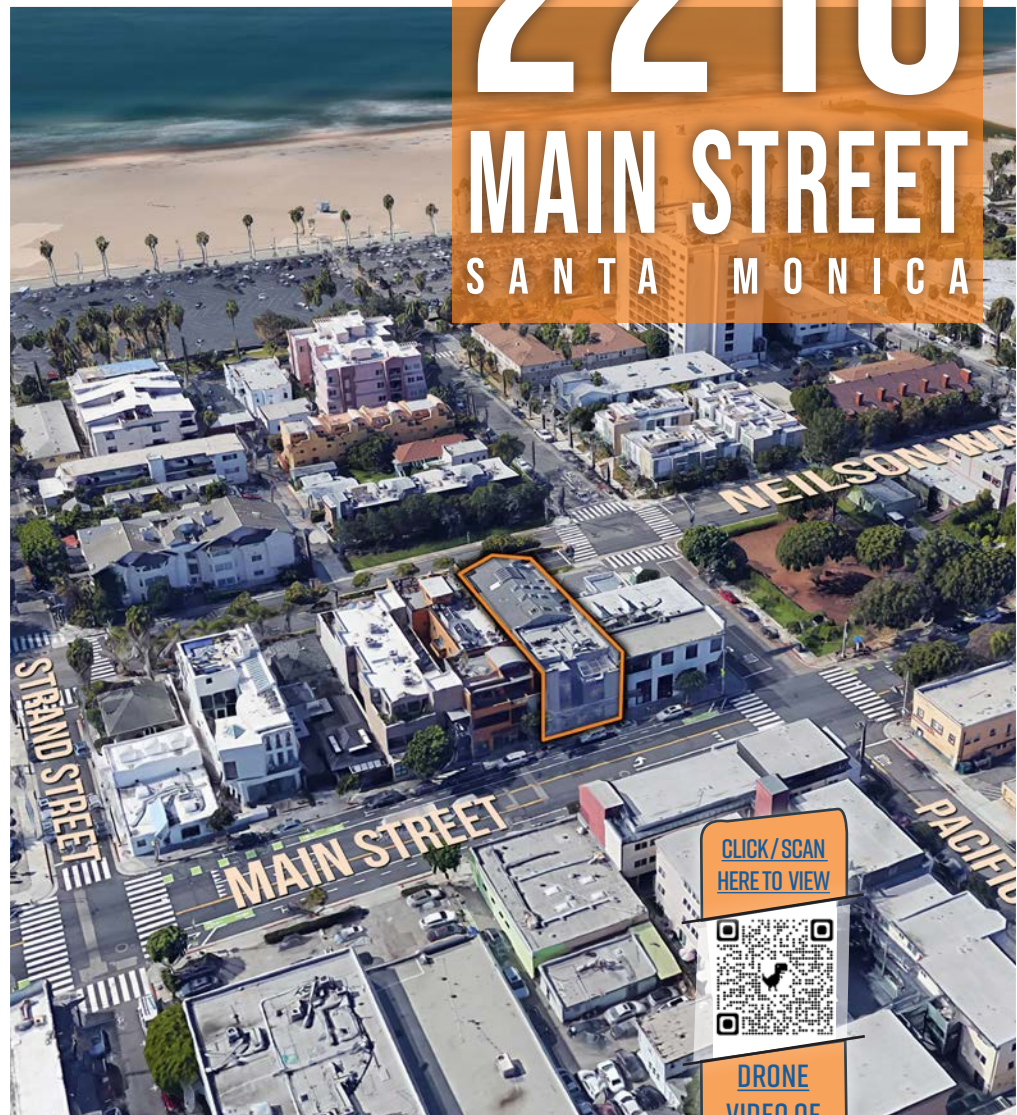


# FOR LEASE

# 2210

## MAIN STREET

### SANTA MONICA



CLICK / SCAN  
HERE TO VIEW



DRONE  
VIDEO OF  
PROPERTY

**AVAILABLE** Entire 3rd Floor: Approximately 4,100 square feet

For more information contact:



**CHRISTIAN C. HOLLAND**  
Managing Director  
T: 310.966.4350  
DRE #00942434  
holland@westmac.com

**WESTMAC**  
Commercial Brokerage Company

**WESTMAC COMMERCIAL BROKERAGE COMPANY**  
1515 Sepulveda Blvd.  
Los Angeles, CA 90025-3311  
Company DRE #01096973  
www.westmac.com



## TABLE OF CONTENTS

**01**

AVAILABLE SPACE

**02**

AREA AMENITIES

**03-04**

FLOOR PLANS

**05**

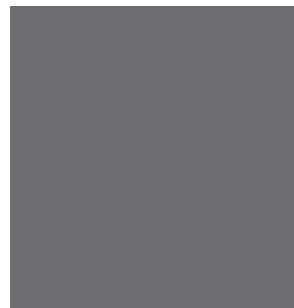
PROPERTY PHOTOS

**06**

PROPERTY PHOTOS

**07**

AREA PHOTOS



# AVAILABLE SPACE

AVAILABLE: JULY 1, 2026

SUITE	SIZE	RENTAL RATE	NNN'S
Suite #100 Suite #300	App: 720 (R) square feet 4,100 (R) square feet	\$4.75 net net net	App: \$1.25 per Sq.Ft

01  
AVAILABLE SPACE

- » The Subject space has been completely remodeled and has only been occupied in it's current configuration by one tenant. The new layout offers both private offices, open areas, (2-3) conference rooms, lounge/kitchen, Two(2) private bathrooms as well as Two (2) exterior deck areas
- » Existing internet service through Spectrum. Fiber also available through Spectrum
- » Walking distance to a world class array of amenities, including but not limited to retail, food, coffee, bars, and the Pacific Ocean
- » Fantastic natural light throughout and continuous ocean breeze as windows are operable
- » Entire building recently renovated. Secure and safe with state of the art security system yet allows for easy visitor access. Only one (1) other tenant in the building, occupying the second (2nd) floor
- » Excellent potential building signage
- » Impeccably maintained "Pride of Ownership" building
- » Ground floor conference room with lounge area also available for lease

The above information while not guaranteed has been secured from sources we believe to be reliable. We obtained the information contained in this memorandum from sources we believe to be reliable. However, we have not verified its accuracy and make no guarantee, warranty or representation about it. It is submitted subject to the possibility of errors, omissions, change of price, rental or other conditions, prior sale, lease or financing or withdrawal without notice. We include projections, opinions, assumptions or estimates for example only, and they may not represent current or future performance of the property. You and your tax and legal advisors should conduct your own investigation of the property and transaction.

For more information contact:

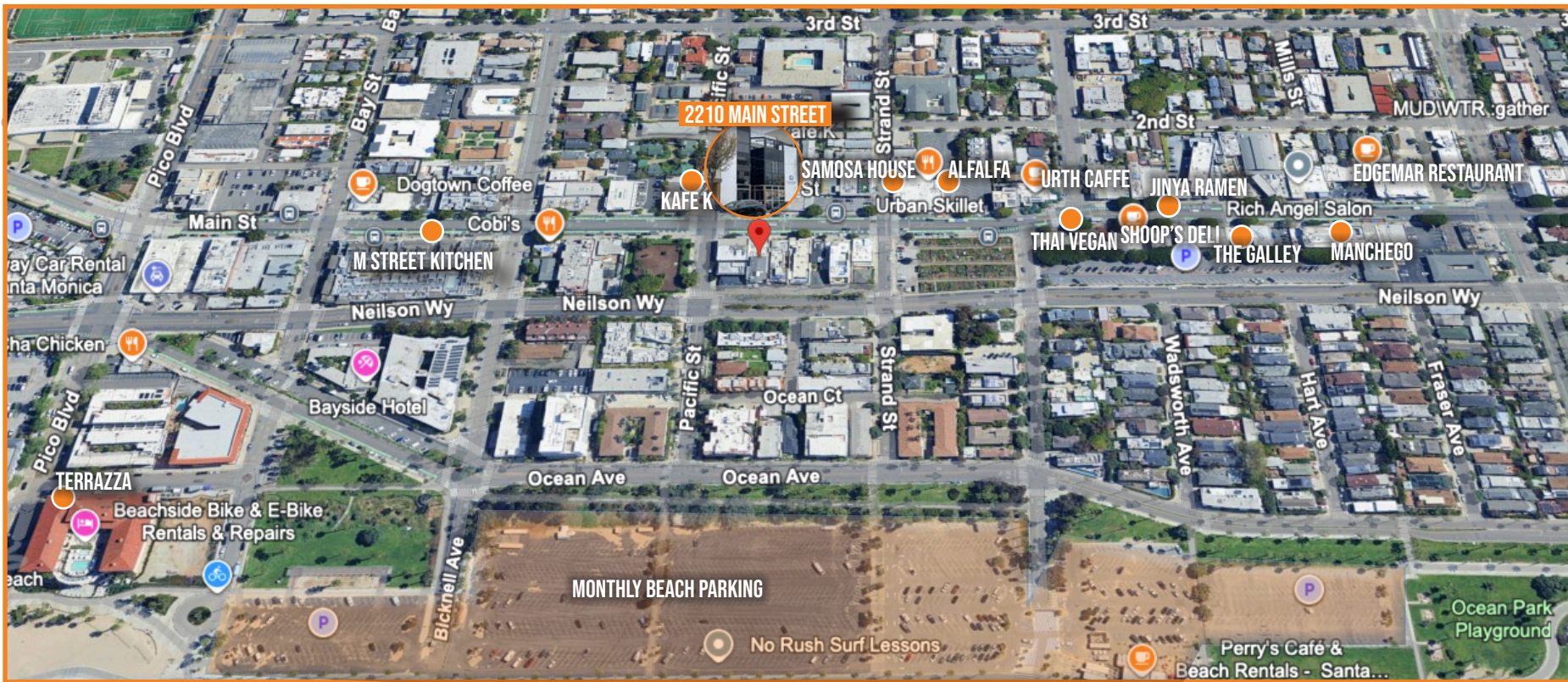


**CHRISTIAN C. HOLLAND**  
Managing Director  
T: 310.966.4350  
DRE #00942434  
holland@westmac.com

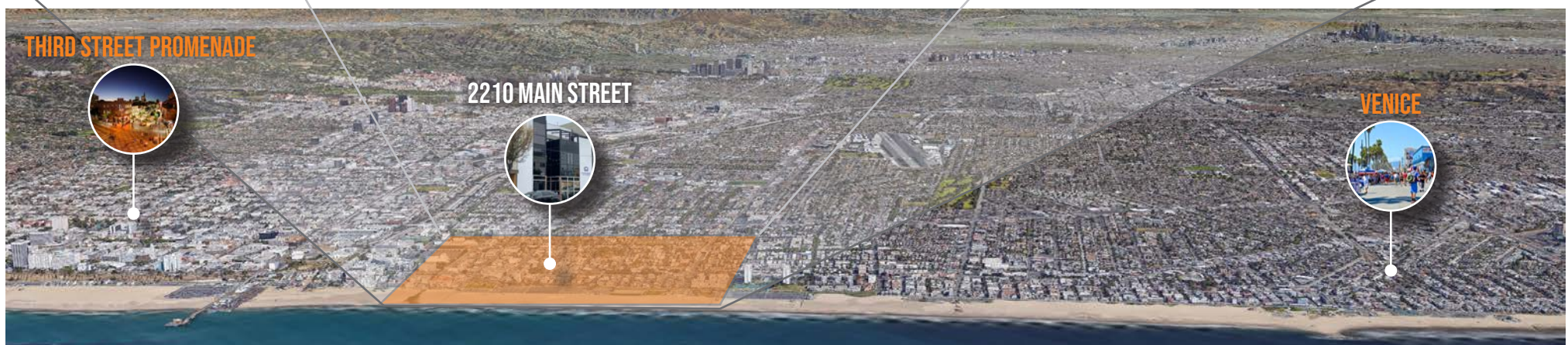
**WESTMAC**  
Commercial Brokerage Company

**WESTMAC COMMERCIAL BROKERAGE COMPANY**  
1515 Sepulveda Blvd.  
Los Angeles, CA 90025-3311  
Company DRE #01096973  
www.westmac.com

# AREA AMENITIES



02  
AREA AMENITIES



For more information contact:

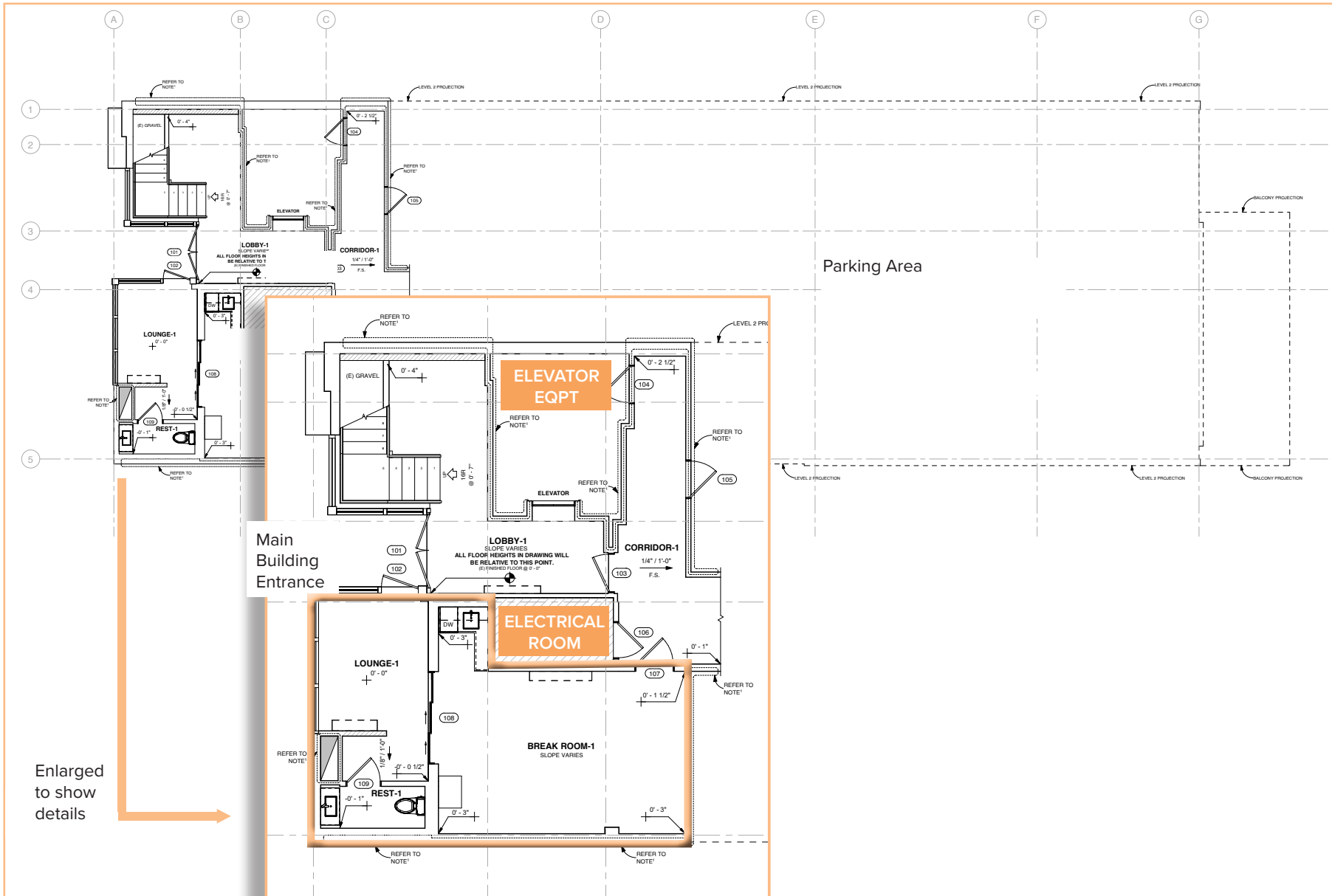


**CHRISTIAN C. HOLLAND**  
 Managing Director  
 T: 310.966.4350  
 DRE #00942434  
 holland@westmac.com

**WESTMAC**  
 Commercial Brokerage Company

**WESTMAC COMMERCIAL BROKERAGE COMPANY**  
 1515 Sepulveda Blvd.  
 Los Angeles, CA 90025-3311  
 Company DRE #01096973  
 www.westmac.com

# GROUND FLOOR PLAN



Enlarged to show details

©2026 WESTMAC Commercial Brokerage Company. All Rights Reserved. WESTMAC Commercial Brokerage fully supports the principles of the Equal Opportunity Act. WESTMAC Commercial Brokerage Company and the WESTMAC Commercial Brokerage Company logo are registered service marks owned by WESTMAC Commercial Brokerage Company and may not be reproduced by any means or in any form whatsoever without written permission.

For more information contact:

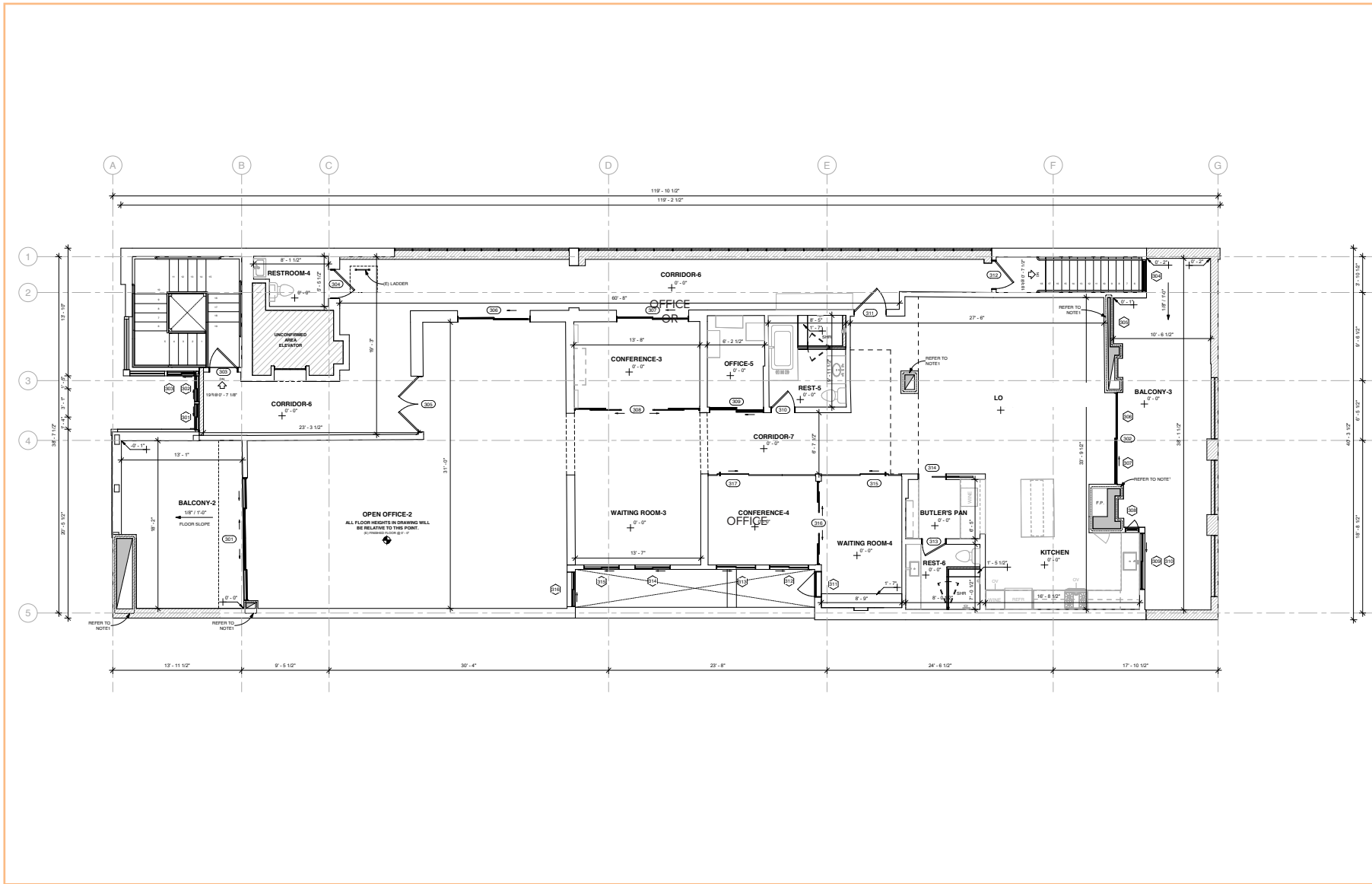


**CHRISTIAN C. HOLLAND**  
 Managing Director  
 T: 310.966.4350  
 DRE #00942434  
 holland@westmac.com

**WESTMAC**  
 Commercial Brokerage Company

**WESTMAC COMMERCIAL BROKERAGE COMPANY**  
 1515 Sepulveda Blvd.  
 Los Angeles, CA 90025-3311  
 Company DRE #01096973  
 www.westmac.com

# THIRD FLOOR PLAN



04

FLOOR & SITE PLANS

©2026 WESTMAC Commercial Brokerage Company. All Rights Reserved. WESTMAC Commercial Brokerage fully supports the principles of the Equal Opportunity Act. WESTMAC Commercial Brokerage Company and the WESTMAC Commercial Brokerage Company logo are registered service marks owned by WESTMAC Commercial Brokerage Company and may not be reproduced by any means or in any form whatsoever without written permission.

For more information contact:



**CHRISTIAN C. HOLLAND**  
 Managing Director  
 T: 310.966.4350  
 DRE #00942434  
 holland@westmac.com

**WESTMAC**  
 Commercial Brokerage Company

**WESTMAC COMMERCIAL BROKERAGE COMPANY**  
 1515 Sepulveda Blvd.  
 Los Angeles, CA 90025-3311  
 Company DRE #01096973  
 www.westmac.com

# PROPERTY PHOTOS



For more information contact:



**CHRISTIAN C. HOLLAND**  
Managing Director  
T: 310.966.4350  
DRE #00942434  
holland@westmac.com

**WESTMAC**  
Commercial Brokerage Company

**WESTMAC COMMERCIAL BROKERAGE COMPANY**  
1515 Sepulveda Blvd.  
Los Angeles, CA 90025-3311  
Company DRE #01096973  
www.westmac.com

# PROPERTY PHOTOS



06

PROPERTY PHOTOS

For more information contact:

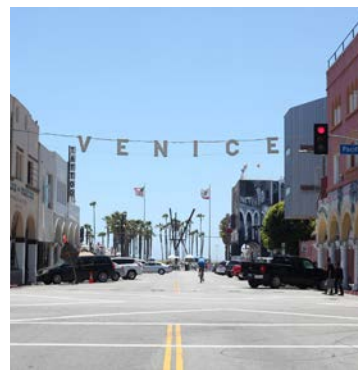


**CHRISTIAN C. HOLLAND**  
Managing Director  
T: 310.966.4350  
DRE #00942434  
holland@westmac.com

**WESTMAC**  
Commercial Brokerage Company

**WESTMAC COMMERCIAL BROKERAGE COMPANY**  
1515 Sepulveda Blvd.  
Los Angeles, CA 90025-3311  
Company DRE #01096973  
www.westmac.com

# PROPERTY AND AREA PHOTOS



For more information contact:



**CHRISTIAN C. HOLLAND**  
Managing Director  
T: 310.966.4350  
DRE #00942434  
holland@westmac.com

**WESTMAC**  
Commercial Brokerage Company

**WESTMAC COMMERCIAL BROKERAGE COMPANY**  
1515 Sepulveda Blvd.  
Los Angeles, CA 90025-3311  
Company DRE #01096973  
www.westmac.com