



Investors
REAL ESTATE PARTNERS

**FOR
SALE**

1702 Elbert Drive | Roanoke, VA

INVESTORS REAL ESTATE PARTNERS | INVESTORSREP.COM



Investors
REAL ESTATE PARTNERS

JASON FOUNTAIN, CCIM
PRINCIPAL BROKER
540.354.6456
JASON@INVESTORSREP.COM

STEVE ZEGARSKI
PRESIDENT / BROKER
540.309.6738
STEVE@INVESTORSREP.COM

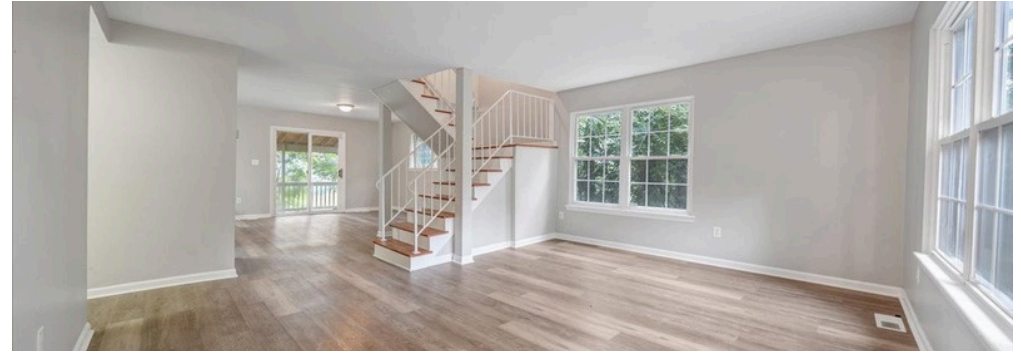
OFFERING SUMMARY | 1702 ELBERT DRIVE, ROANOKE, VA 24018

1702 ELBERT DRIVE, ROANOKE, VA 24018

Price:	\$389,000
Price Per SF:	\$123
Parcel Area:	±1 Acre
Building SF (GIS):	3,168 SF
Year Built:	1970
Zoning:	R-2

PROPERTY HIGHLIGHTS

- 1 of 2 Units Currently Leased @ \$1,700/Month
- Attractive Duplex Asset
- Turnkey Condition
- Strong Tenant Appeal
- Efficient Operations
- Stable Rental Corridor
- Reduced Turnover Risk
- Value-Add Opportunity



INVESTORS REAL ESTATE PARTNERS | INVESTORSREP.COM



JASON FOUNTAIN, CCIM
PRINCIPAL BROKER
540.354.6456
JASON@INVESTORSREP.COM

STEVE ZEGARSKI
PRESIDENT / BROKER
540.309.6738
STEVE@INVESTORSREP.COM



LOCATION | 1702 ELBERT DRIVE, ROANOKE, VA 24018



1702 ELBERT DRIVE, ROANOKE, VA 24018

Located in highly desirable Southwest Roanoke County, 1702–1704 Elbert Drive presents a rare opportunity to acquire a well-maintained brick and vinyl duplex in a supply-constrained rental market. Each townhouse-style unit offers three bedrooms and two and a half baths with modern layouts, open living areas, and updated kitchens—features that consistently attract long-term tenants seeking quality housing.

INVESTORS REAL ESTATE PARTNERS | INVESTORSREP.COM



Investors
REAL ESTATE PARTNERS

JASON FOUNTAIN, CCIM
PRINCIPAL BROKER
540.354.6456
JASON@INVESTORSREP.COM

STEVE ZEGARSKI
PRESIDENT / BROKER
540.309.6738
STEVE@INVESTORSREP.COM

PROPERTY PHOTOS | 1702 ELBERT DRIVE, ROANOKE, VA 24018



INVESTORS REAL ESTATE PARTNERS | INVESTORSREP.COM



Investors
REAL ESTATE PARTNERS

JASON FOUNTAIN, CCIM
PRINCIPAL BROKER
540.354.6456
JASON@INVESTORSREP.COM

STEVE ZEGARSKI
PRESIDENT / BROKER
540.309.6738
STEVE@INVESTORSREP.COM