

CYZNER
PROPERTIES

FOR LEASE
DRIVE THRU AVAILABLE

811 Fischer Boulevard
Toms River, New Jersey

2,000-11,300 SF



PROPOSED
RENDERING

LISTING CONTACT | **Rich Swartz** | 215.313.2627 | Rich@CyznerProperties.com | 192 Rt. 22 West | Green Brook, NJ | 732.629.7595 | www.CyznerProperties.com

Information contained herein is believed to be accurate but is provided without warranty and is subject to errors, omissions, prior sale or lease, price changes, and withdrawal without notice.



3,905 VPD BAY AVE.

Drive Thru Available



14,000 VPD FISCHER BLVD.

Former Rite-Aid location at busy intersection within a neighborhood strip center. High visibility corner location with access from both roadways and shared lot with potential drive thru access.

SEEKING USES
Restaurants - Urgent Care
Physical Therapy- Banks
Household Appliances
Carpet/Tile - Kitchen Retailer

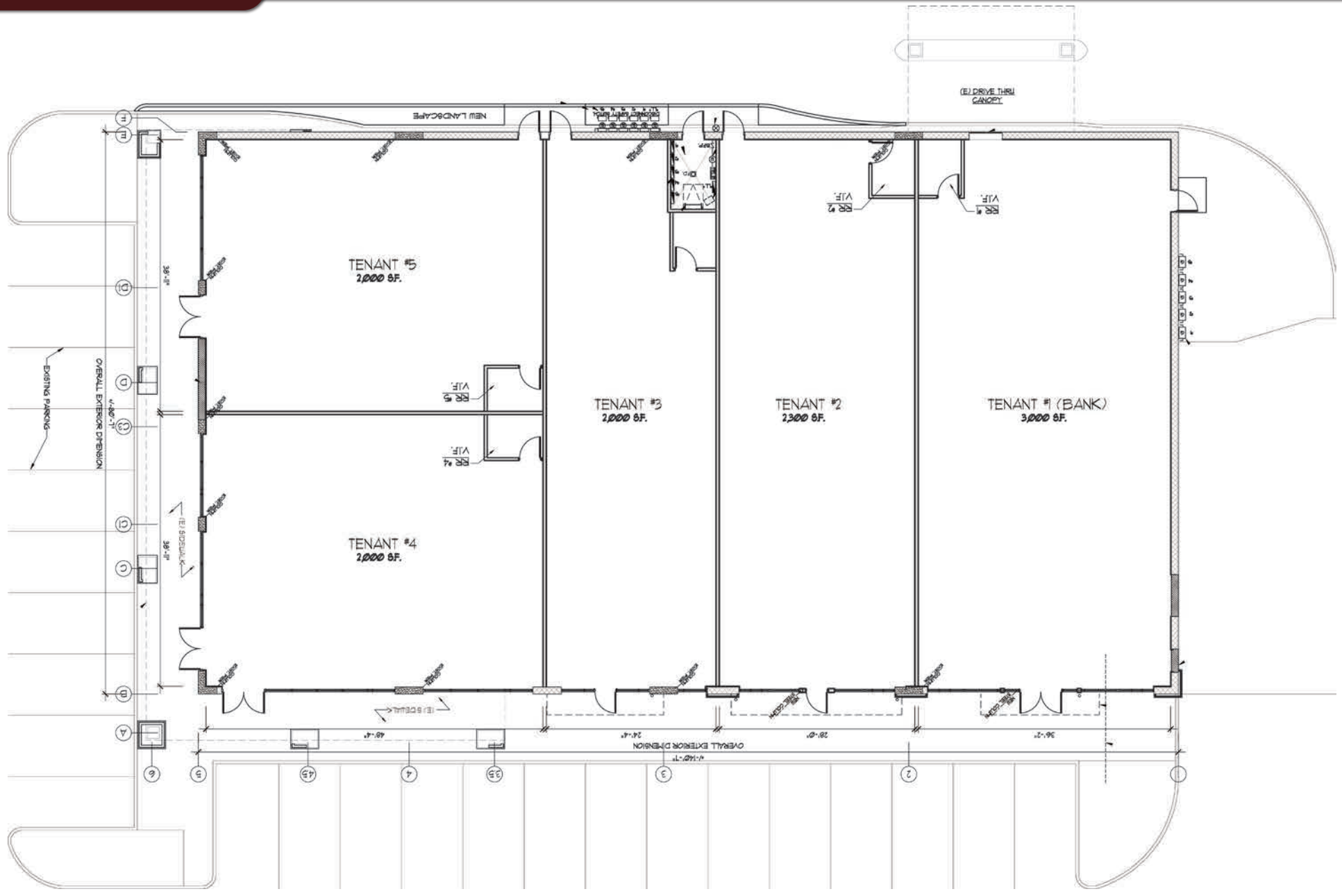
LISTING CONTACT

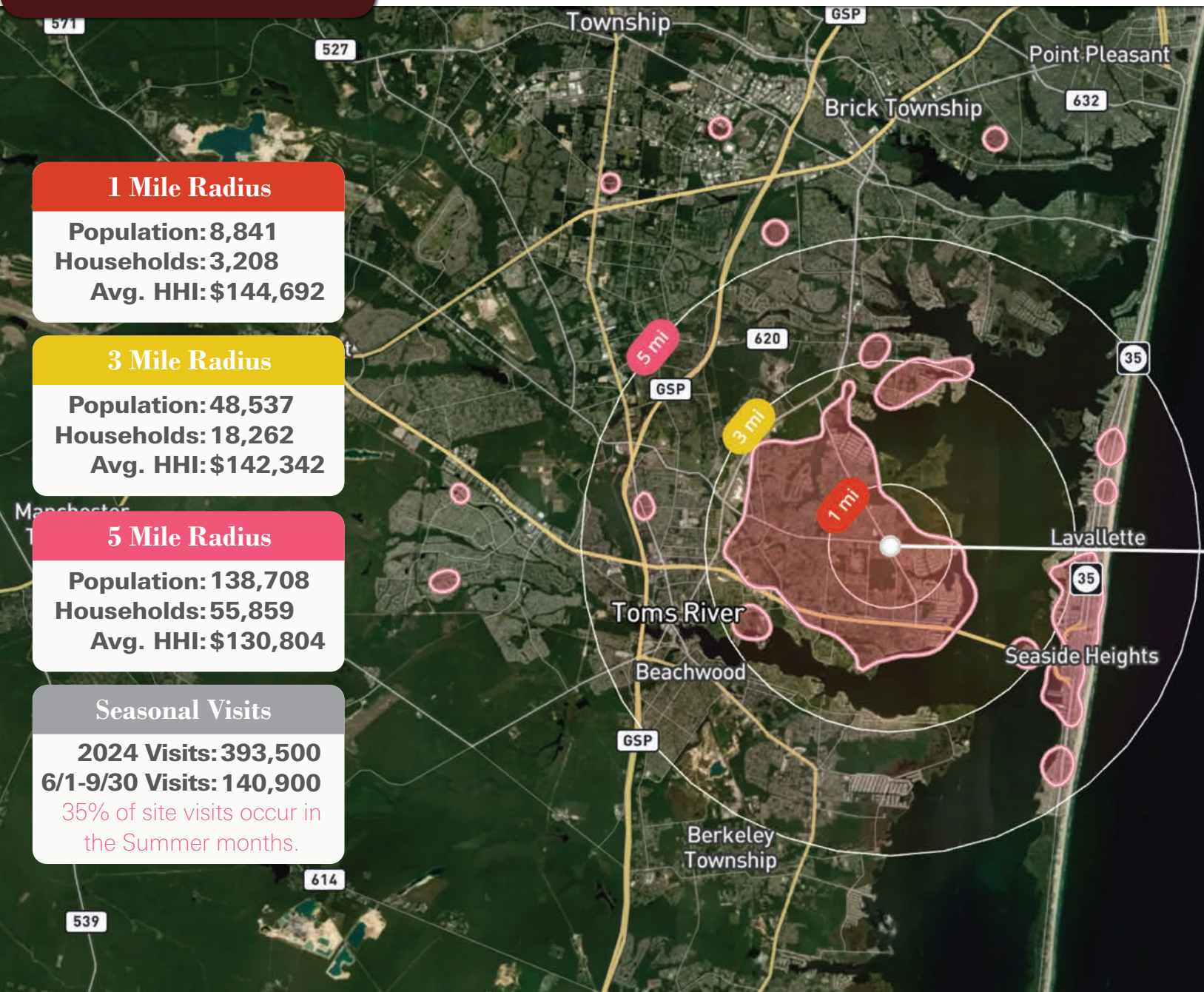
Rich Swartz

215.313.2627
Rich@CyznerProperties.com



192 Rt. 22 West | Green Brook, NJ | 732.629.7595
www.CyznerProperties.com





1 Mile Radius
Population: 8,841
Households: 3,208
Avg. HHI: \$144,692

3 Mile Radius
Population: 48,537
Households: 18,262
Avg. HHI: \$142,342

5 Mile Radius
Population: 138,708
Households: 55,859
Avg. HHI: \$130,804

Seasonal Visits
2024 Visits: 393,500
6/1-9/30 Visits: 140,900
35% of site visits occur in the Summer months.

True Trade Area Outline
60% OF VISITORS COME FROM THIS AREA
Population: 46,394
Households: 18,611
Avg. HHI: \$135,359
Median Age: 46

