

FOR SALE

±18,244 SF Warehouse Building

Situated on ±2 Acres

12 Elkins Road

East Brunswick, NJ



12 Elkins Road, East Brunswick, NJ, offers an exceptional opportunity for modern warehouse and distribution users seeking connectivity, labor access, and operational efficiency. The property benefits from immediate proximity to major transportation arteries including the New Jersey Turnpike and Route 18, with convenient access to Interstate 287 and the Garden State Parkway, enabling seamless regional and interstate trucking routes. This strategic location places users within a premier Northeast logistics corridor, allowing efficient reach to major consumer markets including New York City, Philadelphia, and the broader Mid-Atlantic region.

PROPERTY FEATURES

- ±18,244 sq. ft. warehouse facility
- Situated on ±2 acres
- 2 loading docks
- 30' w x 40' d column spacing
- 20 ft. clear ceiling height
- ±4,300 sq. ft. finished office space
- Zoned PI – Planned Industrial
- Year Built – 1990
- Ample parking area



NAI DiLeo-Bram & Co.

Commercial Real Estate Services, Worldwide.

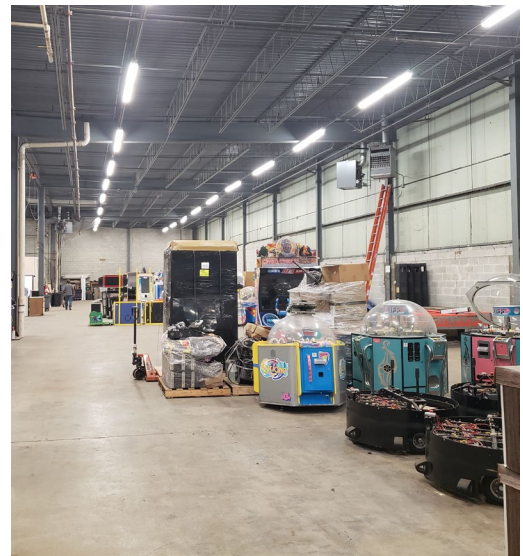
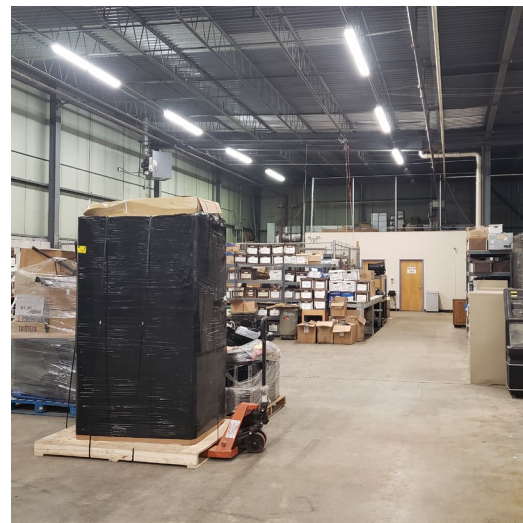
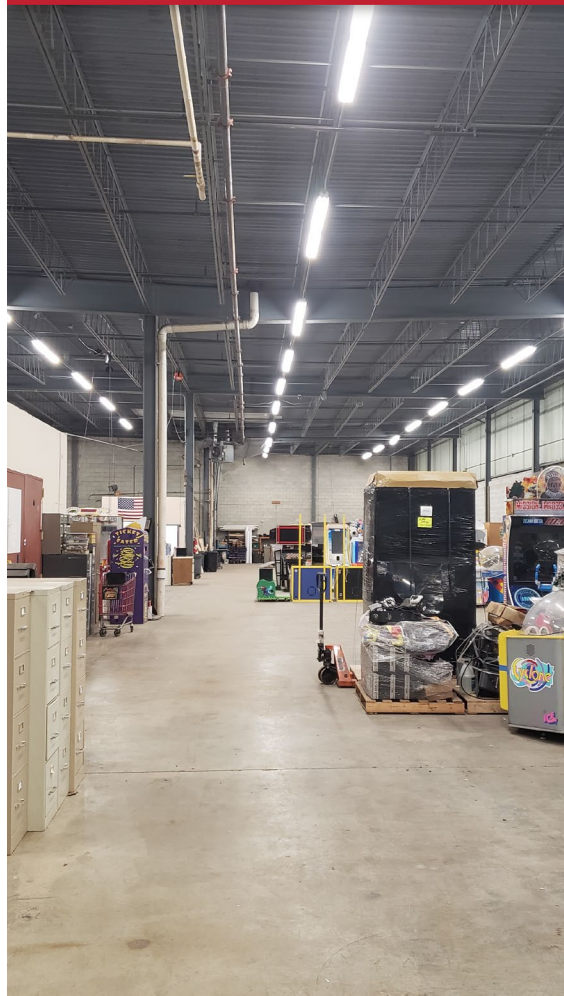
For further information please contact Exclusive Broker:

Marc Shein, Executive Vice President

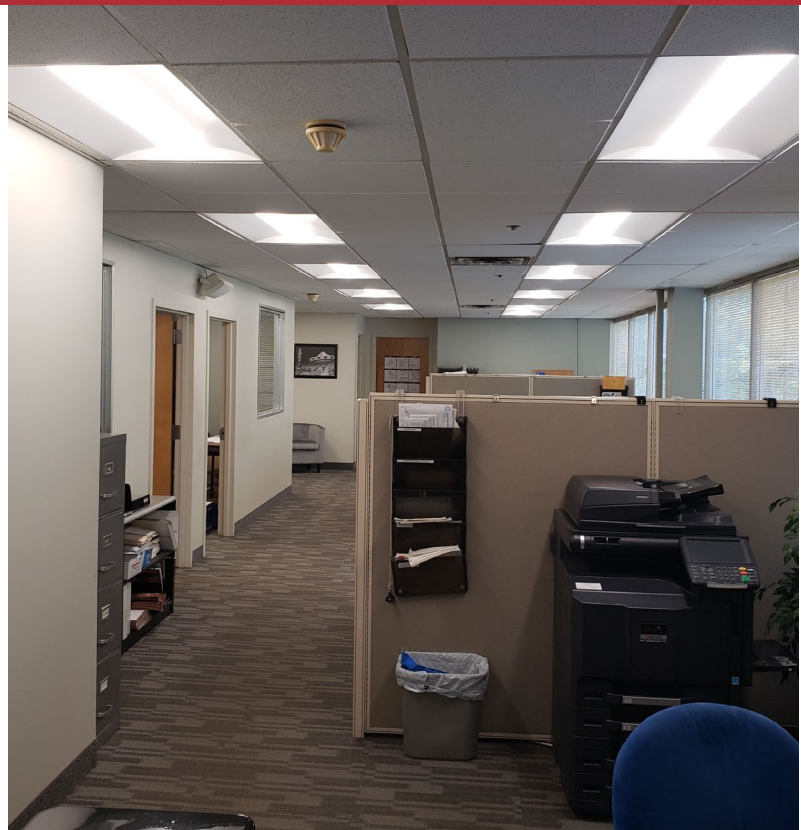
732 985 3000 ext. 212

mshein@naidb.com

Building Photos



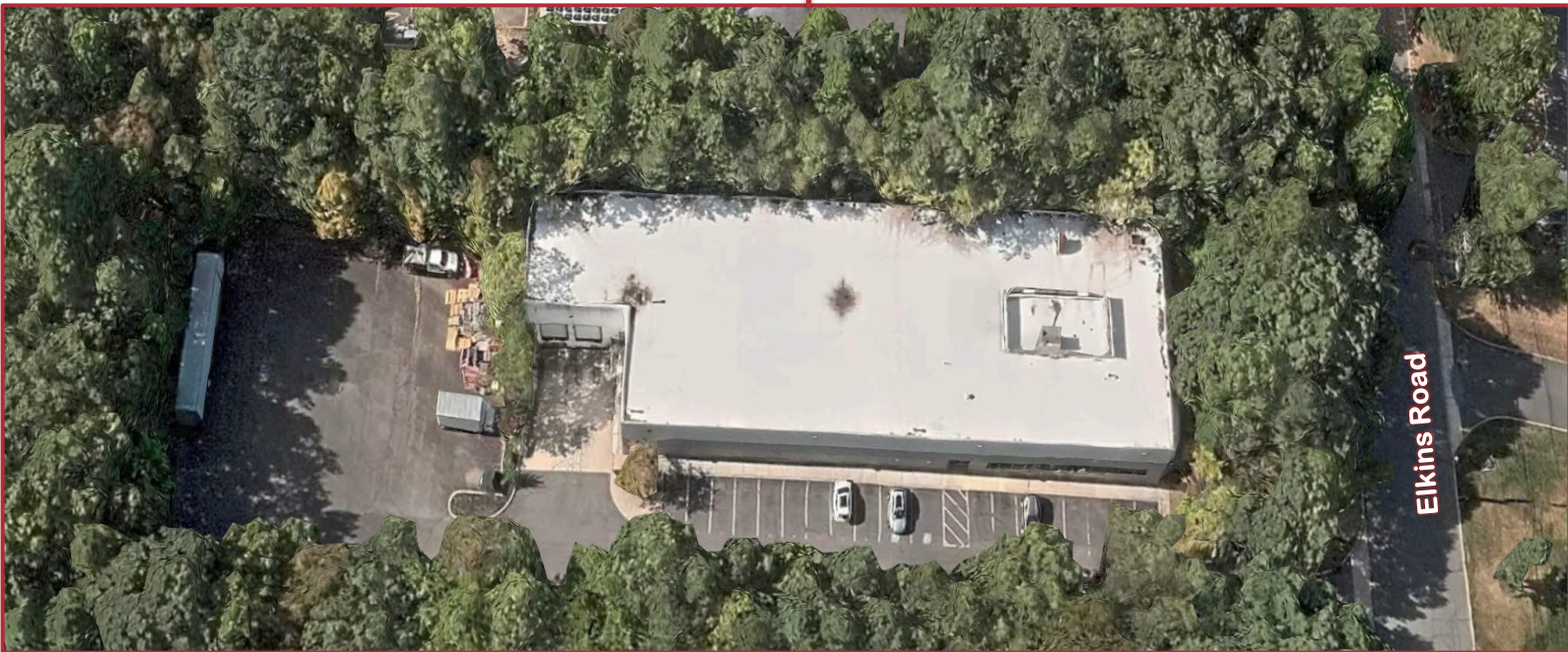
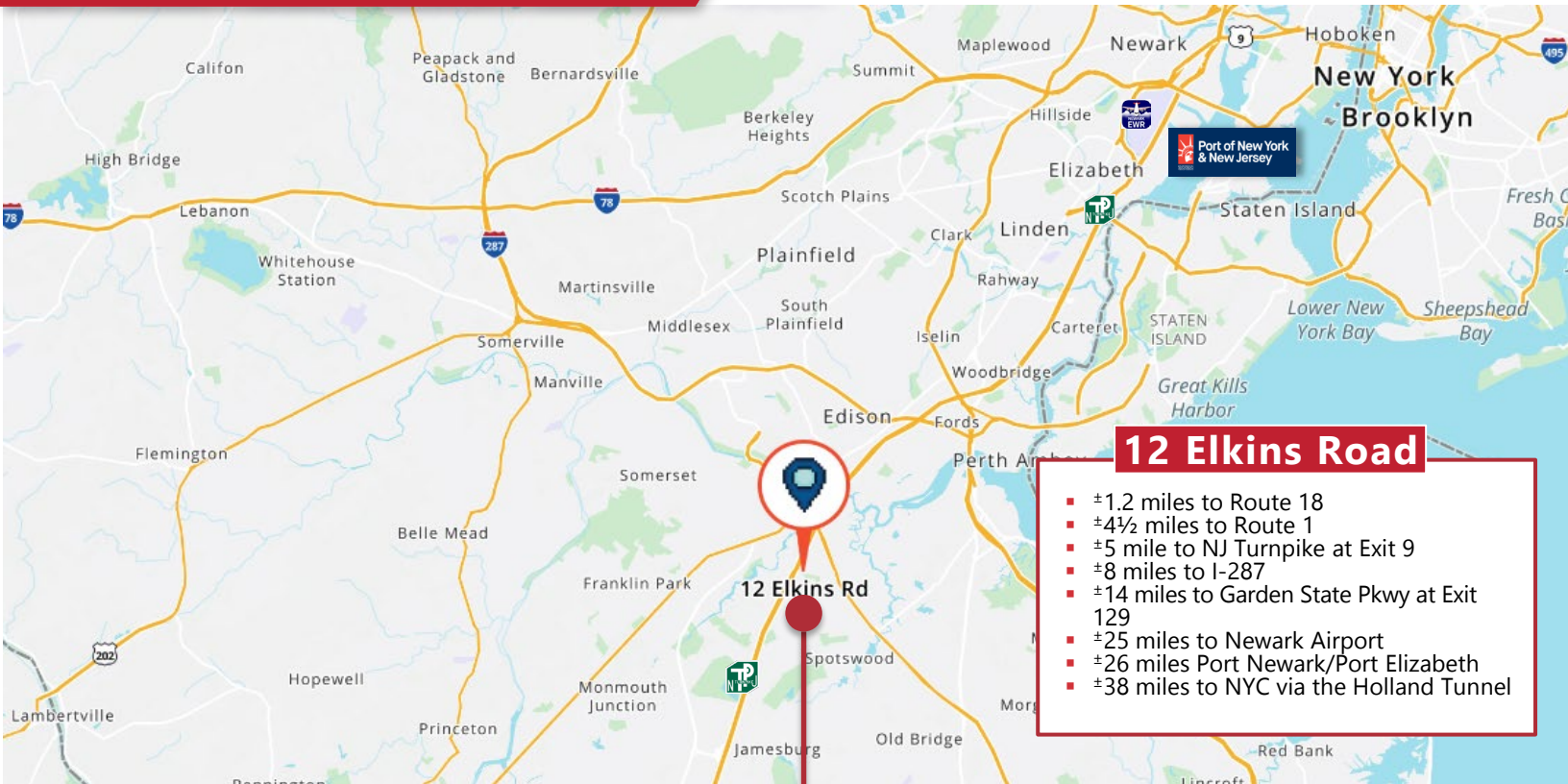
±4,300 Sq. Ft. Finished Office Space



STRATEGICALLY LOCATED

NAIDiLeo-Bram&Co.

Commercial Real Estate Services, Worldwide.



For further information please contact Exclusive Broker:

90 Woodbridge Center Drive, Suite 160
Woodbridge, NJ 07095
732 985 3000 | naidb.com

Marc Shein, Executive Vice President

732 985 3000 ext. 212
mshein@naidb.com

The information contained herein has been given to us by the owner of the property or other sources we deem reliable. We have no reason to doubt its accuracy, but we do not guarantee it. All information should be verified prior to purchase or lease.