

FOR SALE

\$2,750,000



5555 N Pioneer Dr Coeur d'Alene, ID 83815

Property Key Facts

Sale Price: \$2,750,000

Zoning: C-17

Building Size: 14,236 SF

Year Built: 1998

Lot Size: 0.91 Acres

Renovated In: 2012

Exclusively listed by:

Cory Barbieri
Partner/Commercial Broker
509.344.4901
cory.barbieri@g-b.com



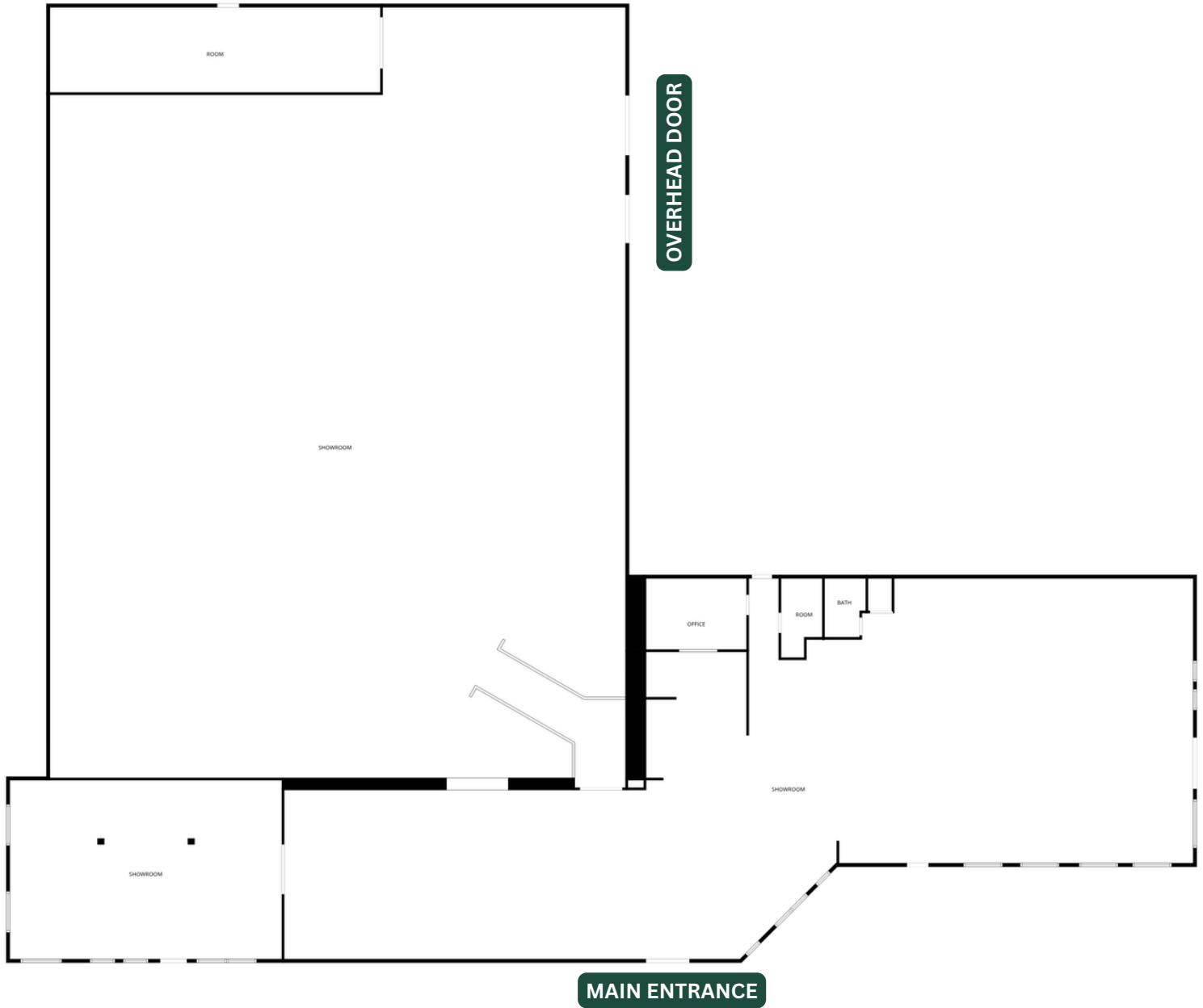
Retail Building For Sale

This property presents an exceptional acquisition opportunity to purchase a premier, standalone commercial property in one of North Idaho's fastest-growing commercial corridors. Spanning an impressive 14,236 square feet, this expansive building features a flexible, open-concept layout perfectly optimized for a high-volume retail showroom, regional distribution center, or multi-use corporate headquarters. Delivering unmatched visibility and seamless logistics with its close proximity to the heavily traveled US-95 highway system, this building is complete with flat, easily accessible terrain and an abundance of dedicated on-site parking.



Cory Barbieri
Partner/Commercial Broker
509.344.4901
cory.barbieri@g-b.com

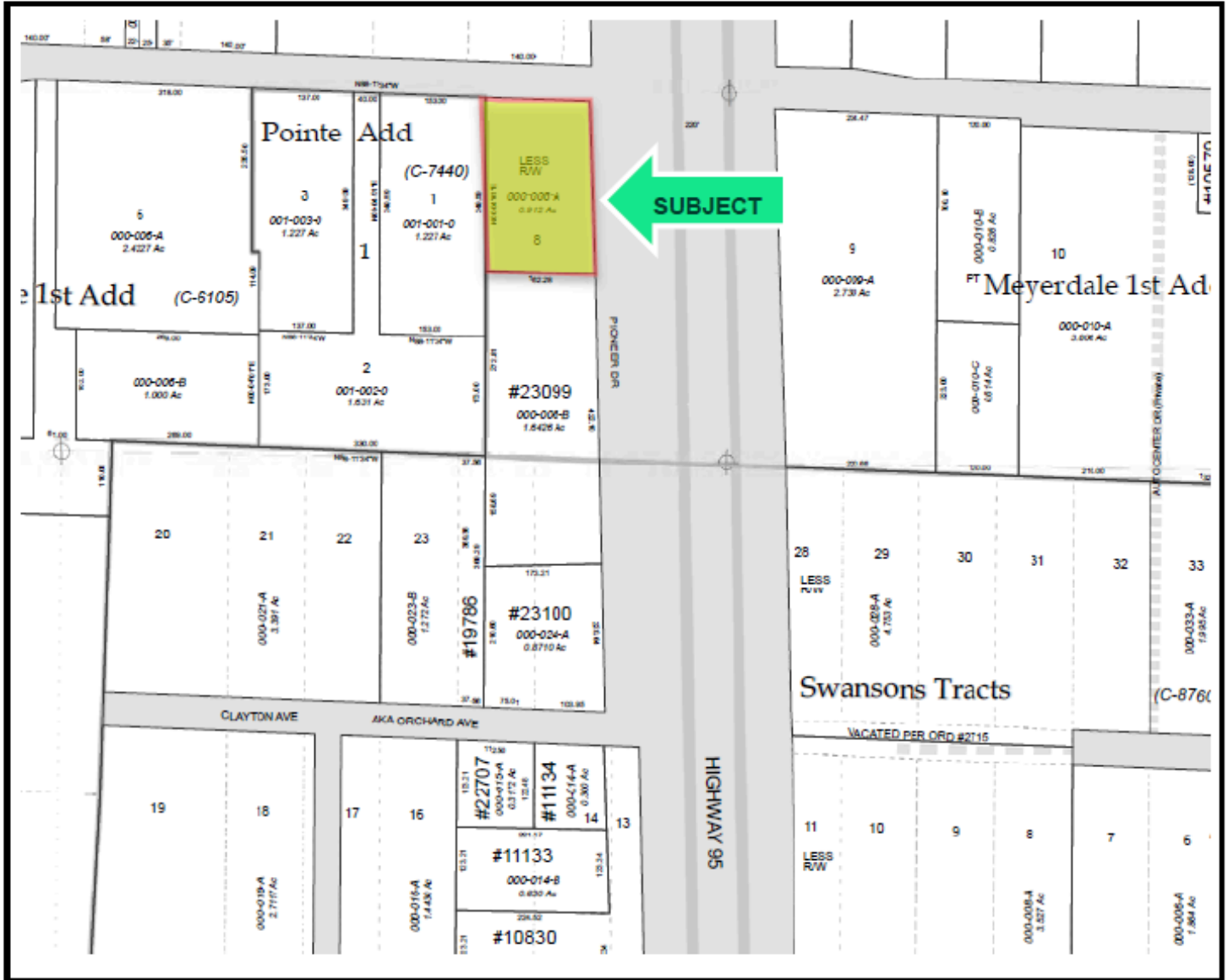




Cory Barbieri
Partner/Commercial Broker
509.344.4901
cory.barbieri@g-b.com

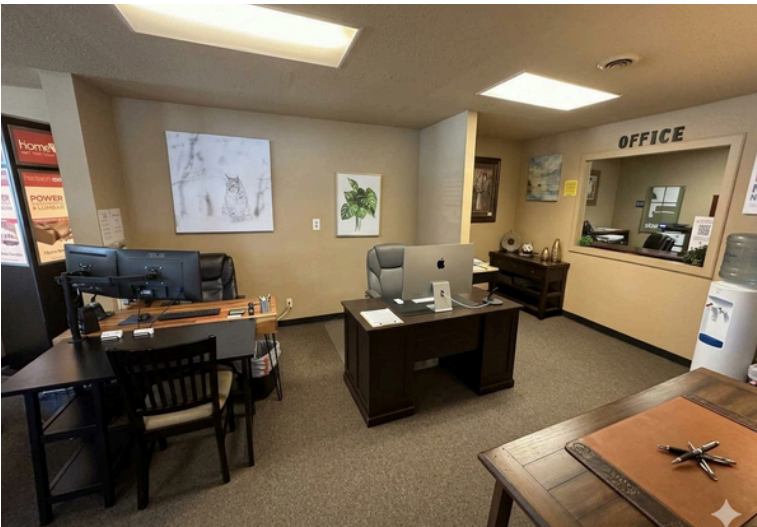


Plat Map



Cory Barbieri
Partner/Commercial Broker
509.344.4901
cory.barbieri@g-b.com





Cory Barbieri
Partner/Commercial Broker
509.344.4901
cory.barbieri@g-b.com



LOCATION OVERVIEW

Coeur d'Alene, ID



International Events

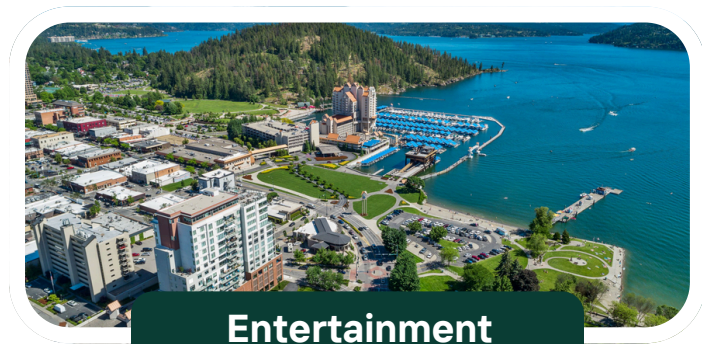
Coeur d'Alene, Idaho, is the largest city in North Idaho, beautifully situated on the north shore of the spectacular 25 mile long Lake Coeur d'Alene.



Outdoor Activities

✓ Home to world-class sports and regional attractions, including the grueling **Ironman Triathlon** and the Pacific Northwest's largest amusement park, **Silverwood Theme Park**.

✓ Surrounded by a playground of water, featuring **more than 55 glacier-carved lakes and rivers** within driving distance for boating, fishing, and kayaking.



Entertainment

✓ **The downtown waterfront is a bustling hub** of over 125 retail shops, fine dining, the iconic Coeur d'Alene Resort, and a **0.75-mile floating boardwalk**.

✓ The **Citylink transit** network provides hassle-free bus routes, connecting the **Riverstone Transit Center** directly to downtown, North Idaho College, and surrounding regional hubs

Cory Barbieri
Partner/Commercial Broker
509.344.4901
cory.barbieri@g-b.com





General Warranty Disclaimer: G&B makes no warranties, representations, or guarantees as to Seller/Owner's supplied information or the Property itself. G&B disclaims all warranties (express and implied) as to the Property and Seller/Owner's statements/information about the Property.

Buyer/Lessee shall not rely on Property information supplied by Seller/Owner or G&B. Buyer/Lessee shall conduct its own due diligence to verify any information and the Property's suitability for specific or general purposes.

Copyright information G&B respects the intellectual property of others and its Digital Millennium Copyright Act.

Cory Barbieri
Partner/Commercial Broker
509.344.4901
cory.barbieri@g-b.com

