



667 Central Ave Unit #2

Highland Park, IL 60035



LEASE RATE **\$39 SF/YR**

OFFERING SUMMARY

Available SF: 449 SF
Lease Rate: \$39 SF/yr (MG)
Building Size: 6,000 SF
Zoning: B-5

PROPERTY OVERVIEW

Introducing a prime leasing opportunity in the heart of Highland Park, IL! This first-floor office space at 667 Central Ave Unit #2 offers unparalleled convenience and comfort. With utilities included (CAM, Electric, AC, Heat, Water), you can focus on your business while we take care of the rest. Ample street parking and a flexible 3-year lease term provide convenience and peace of mind. Don't miss this chance to establish your business in the vibrant central business district. Schedule a tour today and experience the potential of this exceptional commercial space.

PROPERTY HIGHLIGHTS

- Located in the central business district
- First floor office space
- Utilities included (CAM, Electric, AC, Heat, Water)
- Street parking
- 3 year lease term

AVAILABLE SPACES

SPACE	LEASE RATE	SIZE (SF)
667 Central Ave,	\$39.00 SF/yr	449 SF

PETER BIANCHI
O: 847.655.3361
C: 224.578.0947
pfb@mclennancos.com

No warranty or representation is made as to the accuracy of the foregoing information. Terms of sale and lease are subject to change and withdrawal without notice.





667 Central Ave Unit #2
Highland Park, IL 60035



PETER BIANCHI

O: 847.655.3361

C: 224.578.0947

pfb@mclennancos.com

No warranty or representation is made as to the accuracy of the foregoing information. Terms of sale and lease are subject to change and withdrawal without notice.

25 N. Northwest Highway | Park Ridge, IL 60016 | 847.825.0011 | www.mclennancos.com





667 Central Ave Unit #2
Highland Park, IL 60035



PETER BIANCHI

O: 847.655.3361

C: 224.578.0947

pfb@mclennancos.com

No warranty or representation is made as to the accuracy of the foregoing information. Terms of sale and lease are subject to change and withdrawal without notice.





667 Central Ave Unit #2
Highland Park, IL 60035



PETER BIANCHI

O: 847.655.3361

C: 224.578.0947

pfb@mclennancos.com

No warranty or representation is made as to the accuracy of the foregoing information. Terms of sale and lease are subject to change and withdrawal without notice.

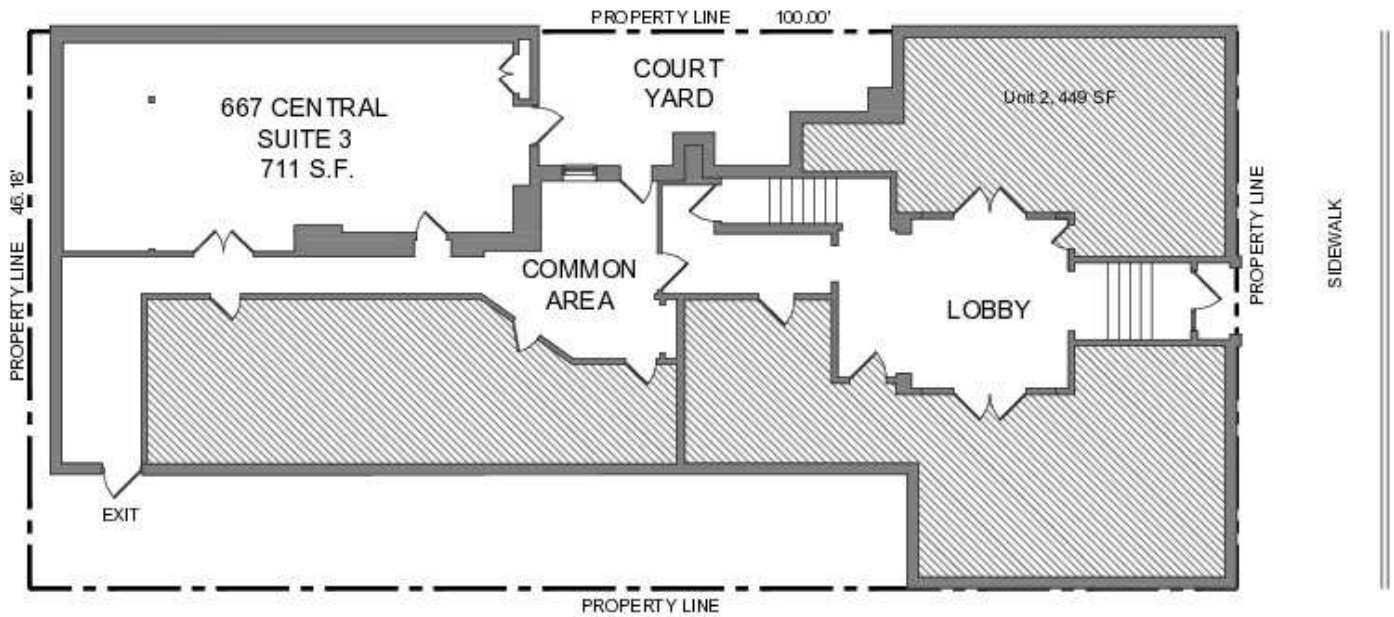
25 N. Northwest Highway | Park Ridge, IL 60016 | 847.825.0011 | www.mclennancos.com





667 Central Ave Unit #2

Highland Park, IL 60035



1 SITE PLAN AND SUITE 3 KEY PLAN
SCALE: 3/32" = 1'-0"

667 CENTRAL AVENUE
HIGHLAND PARK, IL 60035
1/21/2019

PETER BIANCHI
O: 847.655.3361
C: 224.578.0947
pfb@mclennancos.com

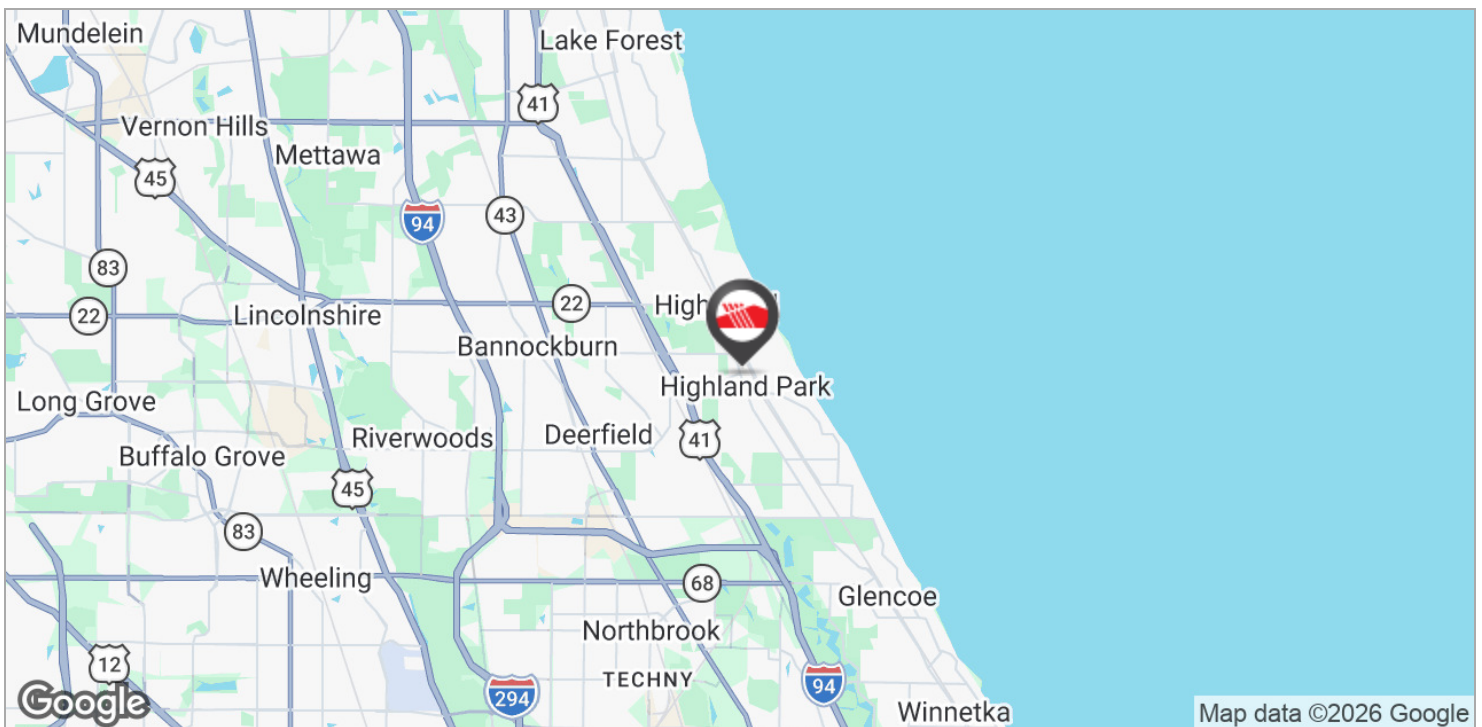
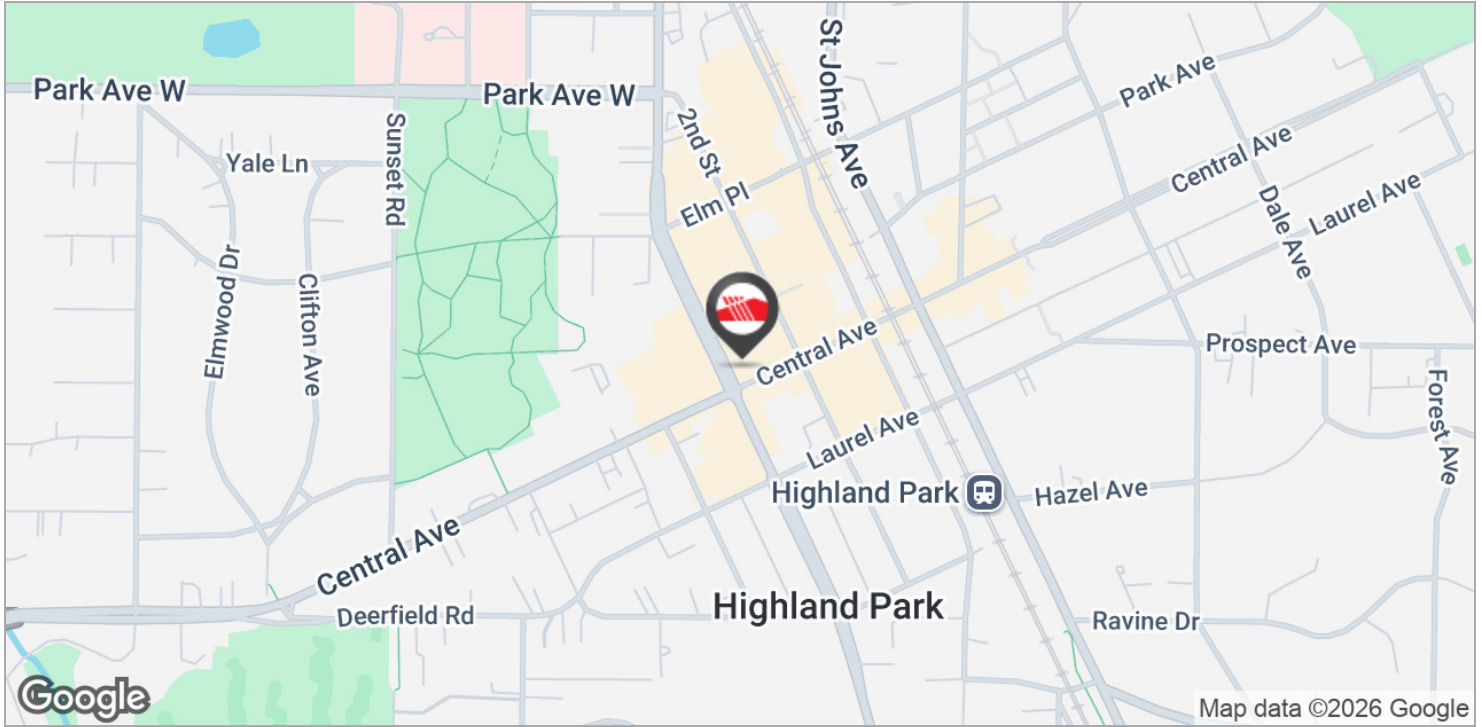
No warranty or representation is made as to the accuracy of the foregoing information. Terms of sale and lease are subject to change and withdrawal without notice.





667 Central Ave Unit #2

Highland Park, IL 60035



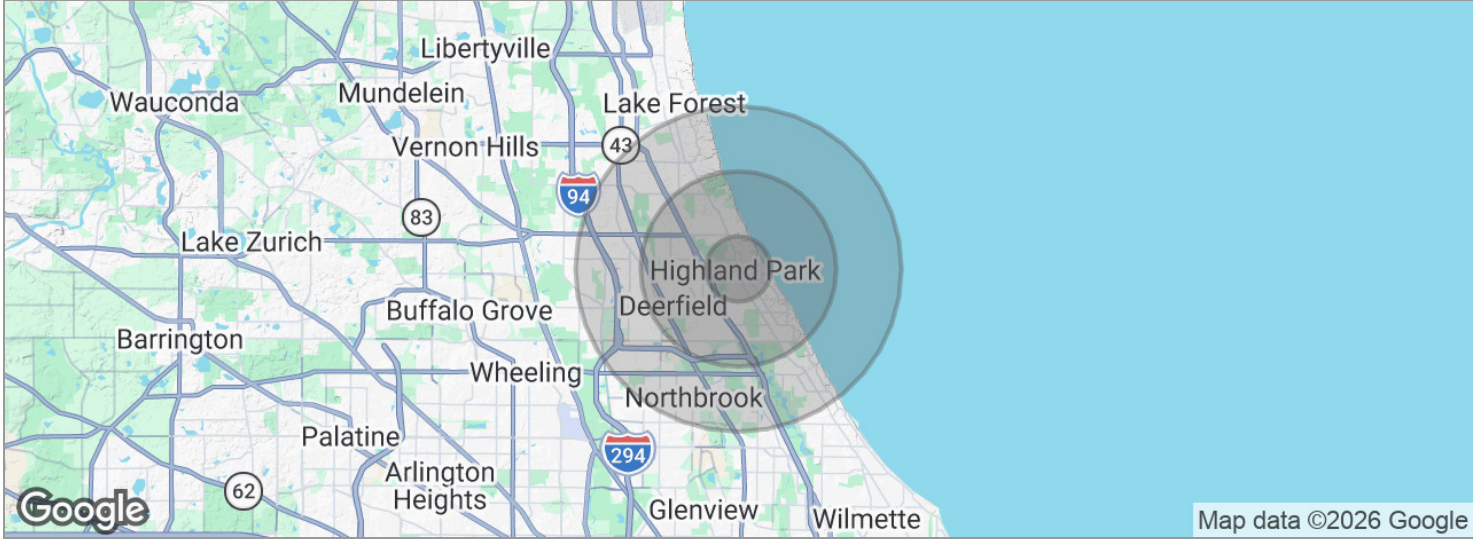
PETER BIANCHI
O: 847.655.3361
C: 224.578.0947
pfb@mclennancos.com

No warranty or representation is made as to the accuracy of the foregoing information. Terms of sale and lease are subject to change and withdrawal without notice.





667 Central Ave Unit #2
 Highland Park, IL 60035



POPULATION	1 MILE	3 MILES	5 MILES
Total population	9,982	50,158	103,483
Median age	47.8	46.1	45.3
Median age (Male)	48.5	45.1	44.3
Median age (Female)	48.1	47.0	45.8
HOUSEHOLDS & INCOME	1 MILE	3 MILES	5 MILES
Total households	4,237	19,317	38,428
# of persons per HH	2.4	2.6	2.7
Average HH income	\$192,441	\$233,381	\$255,465
Average house value	\$517,165	\$646,898	\$770,649

* Demographic data derived from 2020 ACS - US Census

PETER BIANCHI
 O: 847.655.3361
 C: 224.578.0947
 pfb@mclennancos.com

No warranty or representation is made as to the accuracy of the foregoing information. Terms of sale and lease are subject to change and withdrawal without notice.

