

# MONROE INDUSTRIAL PARK

FOR LEASE · 2,000 SF – 9,819 SF



10031 MONROE DRIVE  
DALLAS, TEXAS 75229



**BROKER BONUS AVAILABLE!**

**JASON FINCH**

972.948.8262

[jason@richyoungcompany.com](mailto:jason@richyoungcompany.com)

**ALEX BRYAN**

972.965.2878

[abryan@richyoungcompany.com](mailto:abryan@richyoungcompany.com)

Owned and Managed by:



# MONROE INDUSTRIAL PARK

FOR LEASE · 2,000 SF – 9,819 SF



## Property Highlights:

- 66,658 SF – Three Building Complex
- +/- 18' Clear Height
- Built 1979
- Easy access to I-35, I-635, Loop 12
- Move-In Ready Spaces
- Dock High & Grade Level Loading

## AVAILABLE SUITES:

- Suite 106 – 2,200 SF
- Suite 108 – 2,295 SF
- Suite 205 – 2,300 SF
- Suite 206 – 7,519SF
- Suite 203 - 2,450 SF
- Suite 105 - 5,200 SF

### JASON FINCH

972.948.8262

[jason@richyoungcompany.com](mailto:jason@richyoungcompany.com)

### ALEX BRYAN

972.965.2878

[abryan@richyoungcompany.com](mailto:abryan@richyoungcompany.com)

Owned and Managed by:



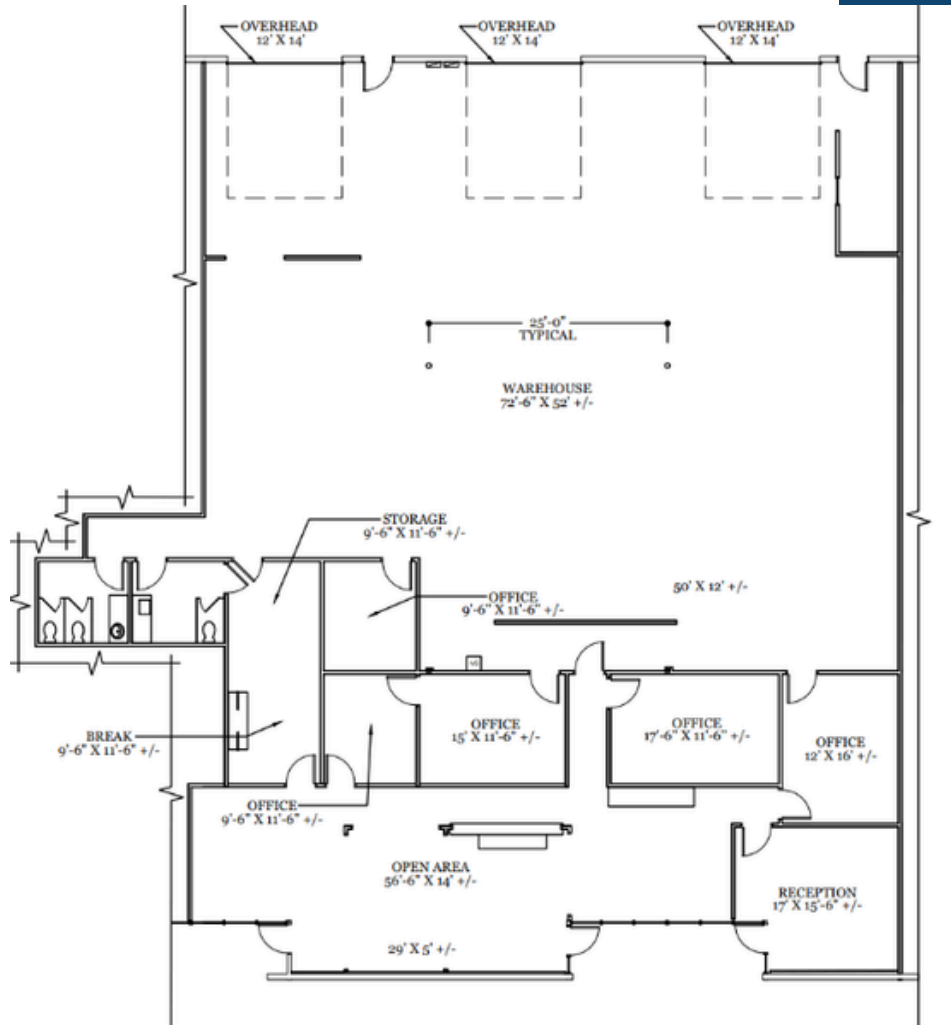
# MONROE INDUSTRIAL PARK

FOR LEASE · 2,000 SF – 9,819 SF



## Available Space:

#206 - 7,519 SF



### JASON FINCH

972.948.8262

[jason@richyoungcompany.com](mailto:jason@richyoungcompany.com)

### ALEX BRYAN

972.965.2878

[abryan@richyoungcompany.com](mailto:abryan@richyoungcompany.com)

Owned and Managed by:



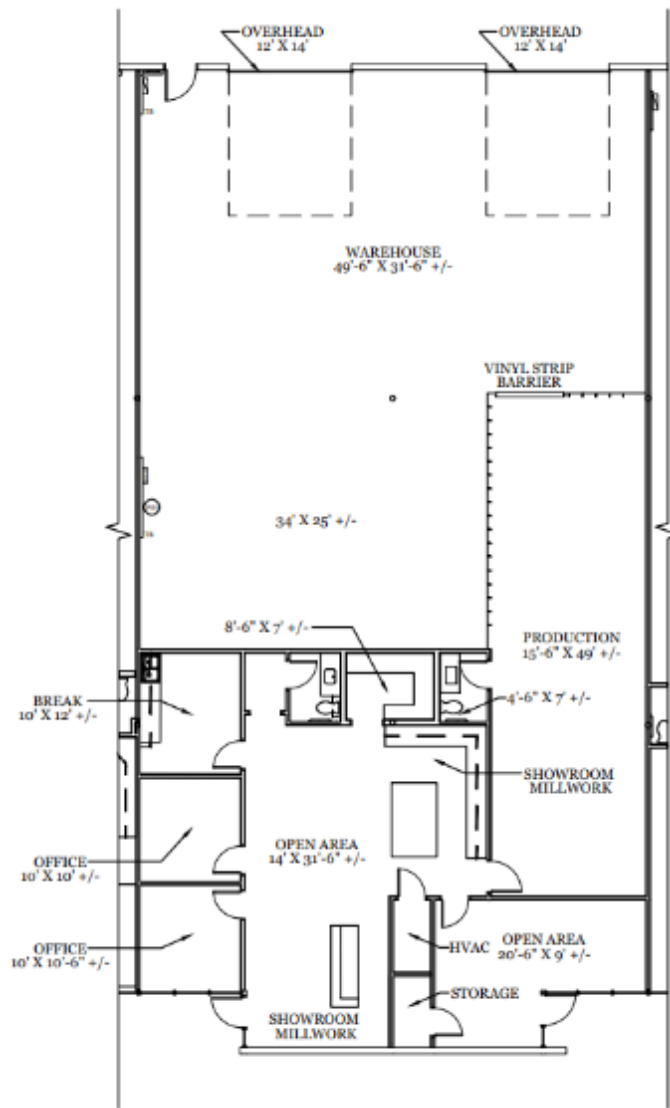
# MONROE INDUSTRIAL PARK

FOR LEASE · 2,000 SF – 9,819 SF



## Available Space:

#105 - 5,200 SF



### JASON FINCH

972.948.8262

[jason@richyoungcompany.com](mailto:jason@richyoungcompany.com)

### ALEX BRYAN

972.965.2878

[abryan@richyoungcompany.com](mailto:abryan@richyoungcompany.com)

Owned and Managed by:



# MONROE INDUSTRIAL PARK

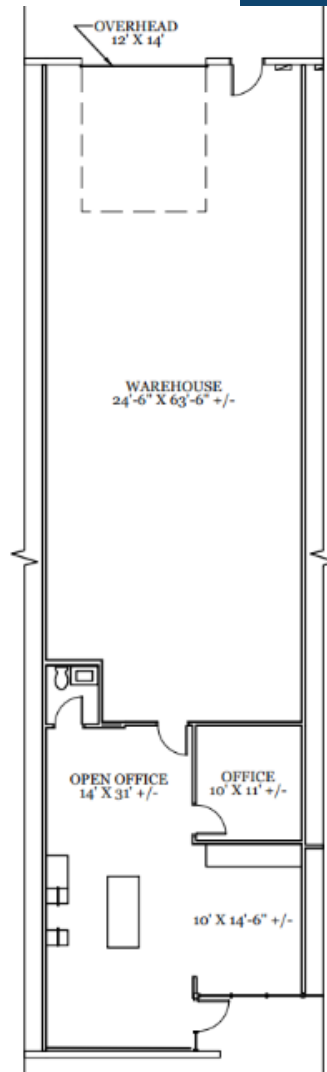
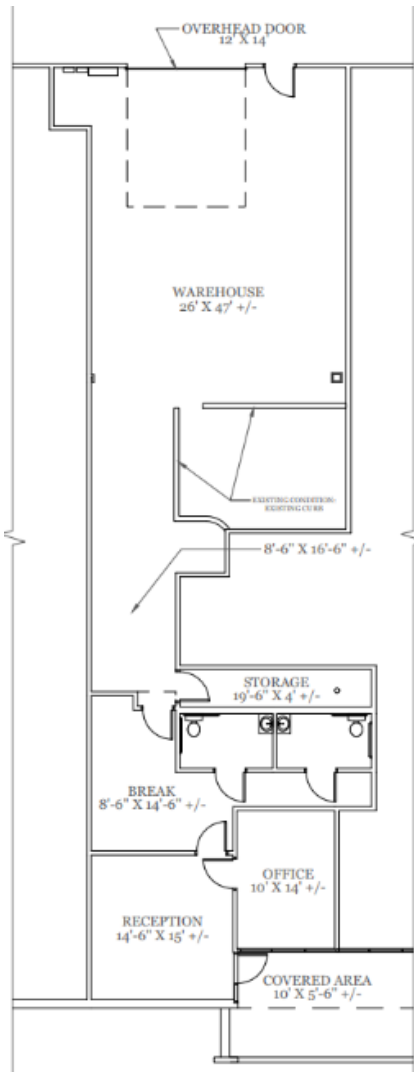
FOR LEASE · 2,000 SF – 9,819 SF



## Available Space:

#205 - 2,300 SF

#203 - 2,450 SF



### JASON FINCH

972.948.8262

[jason@richyoungcompany.com](mailto:jason@richyoungcompany.com)

### ALEX BRYAN

972.965.2878

[abryan@richyoungcompany.com](mailto:abryan@richyoungcompany.com)

Owned and Managed by:



# MONROE INDUSTRIAL PARK

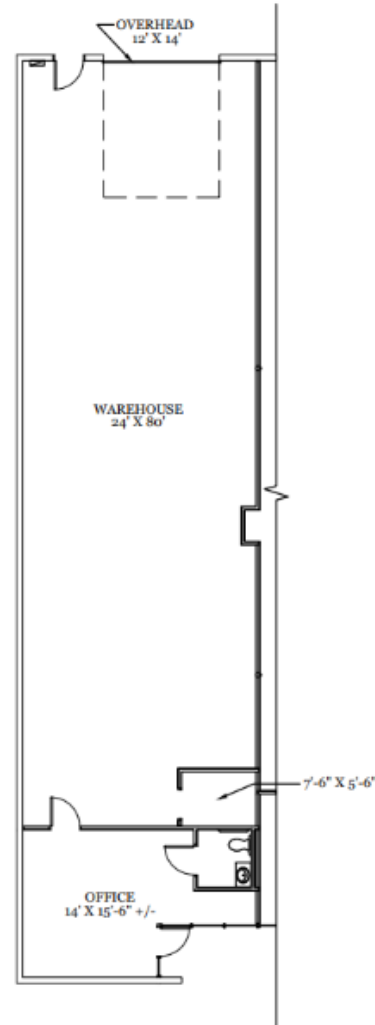
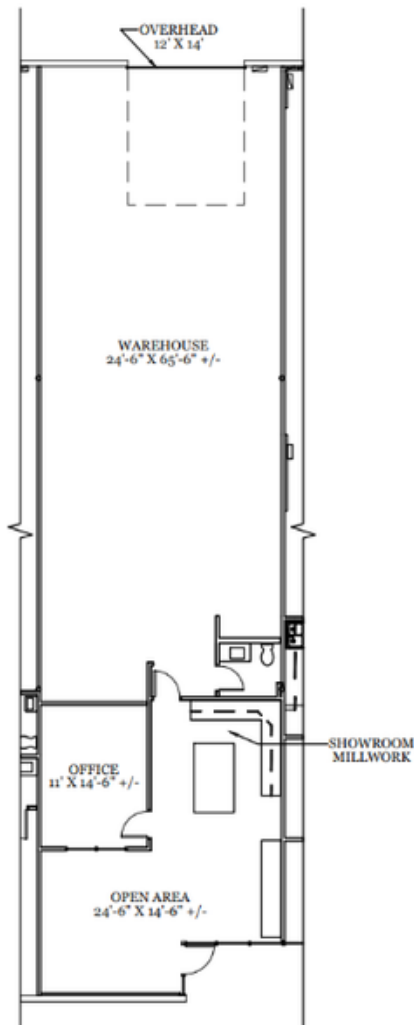
FOR LEASE · 2,000 SF – 9,819 SF



## Available Space:

#106 - 2,200 SF

#108 - 2,295 SF



### JASON FINCH

972.948.8262

[jason@richyoungcompany.com](mailto:jason@richyoungcompany.com)

### ALEX BRYAN

972.965.2878

[abryan@richyoungcompany.com](mailto:abryan@richyoungcompany.com)

Owned and Managed by:



# MONROE INDUSTRIAL PARK

FOR LEASE · 2,000 SF – 9,819 SF



**JASON FINCH**

972.948.8262

[jason@richyoungcompany.com](mailto:jason@richyoungcompany.com)

**ALEX BRYAN**

972.965.2878

[abryan@richyoungcompany.com](mailto:abryan@richyoungcompany.com)

Owned and Managed by:



# MONROE INDUSTRIAL PARK

FOR LEASE · 2,000 SF – 9,819 SF



**JASON FINCH**

972.948.8262

[jason@richyoungcompany.com](mailto:jason@richyoungcompany.com)

**ALEX BRYAN**

972.965.2878

[abryan@richyoungcompany.com](mailto:abryan@richyoungcompany.com)

Owned and Managed by:

