

ocal

STEVE MADDEN

STEVE
MADDEN



1021 *Sainte-Catherine Street West*
Montreal, Quebec

RETAIL SPACE
FOR LEASE

Lease Terms

Term	5-10 years
Area	Ground Floor 2,495 sq. ft. Basement ± 2,500 sq. ft.
Net Rent	\$150.00 per sq. ft.
Additional Rent	\$86.30 per sq. ft.
Hydro	Metered
Availability	October 1 st , 2026 (30 days notice)



Property Details



Located on Sainte-Catherine Street West between Metcalfe and Peel streets



Space benefits from excellent foot traffic and great visibility



3-min walk to the Peel metro station

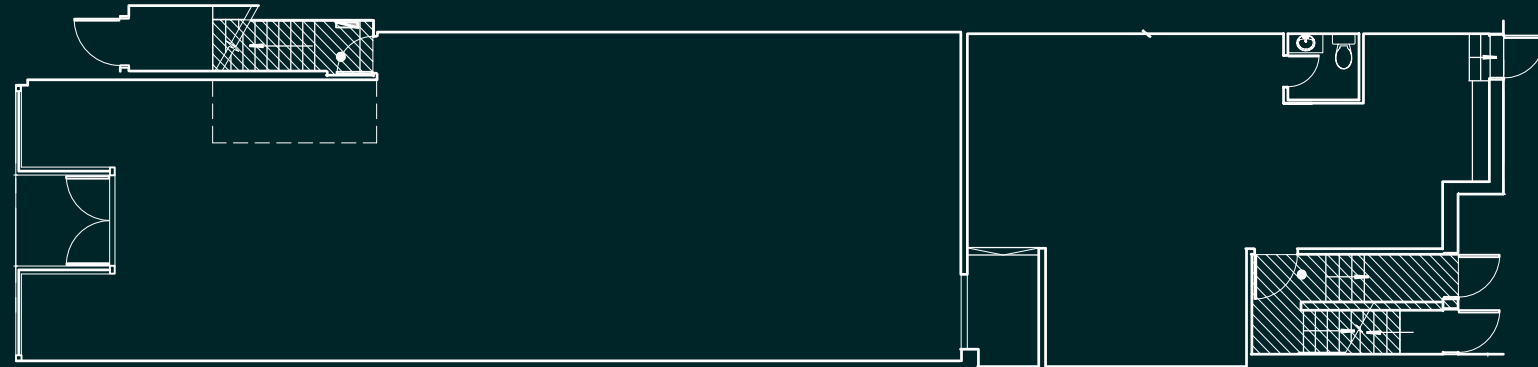


Neighbouring tenants include the new Lululemon flagship, Roots, Club Monaco, Tristan, Lacoste, and many more

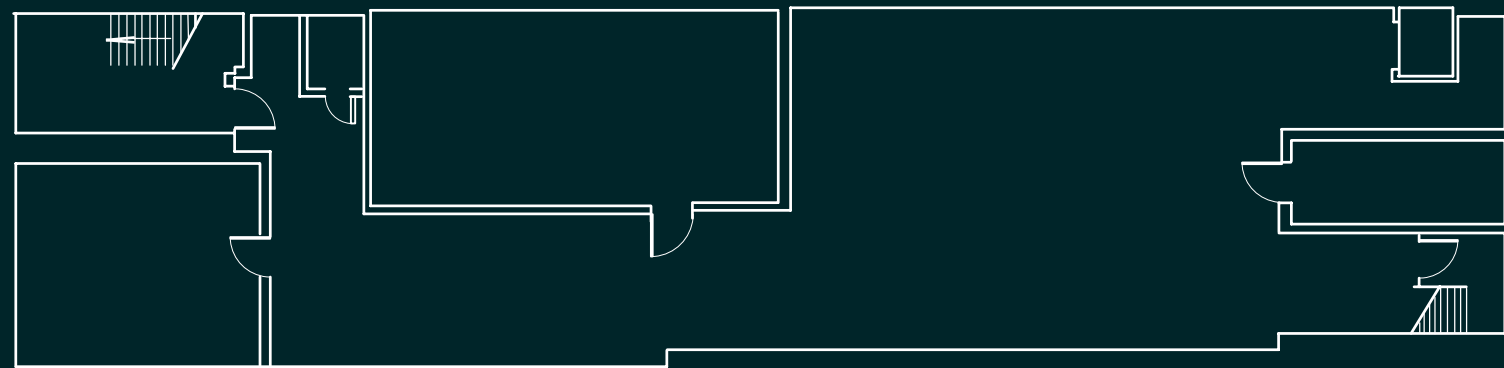
Floor Plans

- + Ceiling Height: 11 ft 3 in
- + Storefront Height: Approx. 21 ft
- + Interior Dimensions: 101 ft 3 in x 22 ft 5 in

Ground Floor - 2,495 sq. ft.



Basement - ± 2,500 sq. ft.



Sainte-Catherine Street West

Sainte-Catherine Street West



Contact Us

Christopher Rundle
 Vice President
 Real Estate Broker
 +1 514 375 0818
 christopher.rundle@cbre.com

Bryan Greenberg
 Associate Vice President
 Commercial Real Estate Broker
 +1 514 375 2507
 bryan.greenberg@cbre.com

Amanda Angela Herbu
 Associate
 Commercial Real Estate Broker
 +1 514 375 0456
 amanda.herbu@cbre.com

CBRE Limited, Real Estate Agency | 1250
 René-Lévesque Blvd West, Suite 2800 |
 Montréal, Québec H3B 4W8 | +1 514 849
 6000 | www.cbre.ca

This disclaimer shall apply to CBRE Limited, and to all divisions of the Corporation ("CBRE"). The information set out herein (the "Information") has not been verified by CBRE, and CBRE does not represent, warrant or guarantee the accuracy, correctness and completeness of the Information. CBRE does not accept or assume any responsibility or liability, direct or consequential, for the Information or the recipient's reliance upon the Information. The recipient of the Information should take such steps as the recipient may deem necessary to verify the Information prior to placing any reliance upon the Information. The Information may change and any property described in the Information may be withdrawn from the market at any time without notice or obligation to the recipient from CBRE. Mapping Sources: Canadian Mapping Services canadamapping@cbre.com; DMTI Spatial, Environics Analytics, Microsoft Bing, Google Earth

