

Maplewood | MN 55117
.63 acres at McMenemy St



Land For Sale

PROPERTY INFORMATION

.63 Acre site or 27,407 square feet

\$8.00 per square foot or \$219,250

Zoned Business Commercial

4771 Bald Eagle Avenue | 101
White Bear Lake | MN 55110
www.TITUScre.com



Mike Brass
612-750-4312
mike@mikebrass.com

Maplewood | MN 55117
.63 acres at McMenemy St



For Sale

PROPERTY HIGHLIGHTS

- .63 acres available (27,406 square feet)
 - Located in the SQ quadrant of McMenemy Street and Sloan Place
 - Business Commercial zoning
 - Shared access driveway
 - Easy access to I-35E via Roselawn Avenue
 - Close proximity to many office and industrial parks
 - Build up to 3,900 square feet
- Existing 15 parking spaces will be deed restricted to adjacent property.



4771 Bald Eagle Avenue | 101
White Bear Lake | MN 55110
www.TITUScre.com

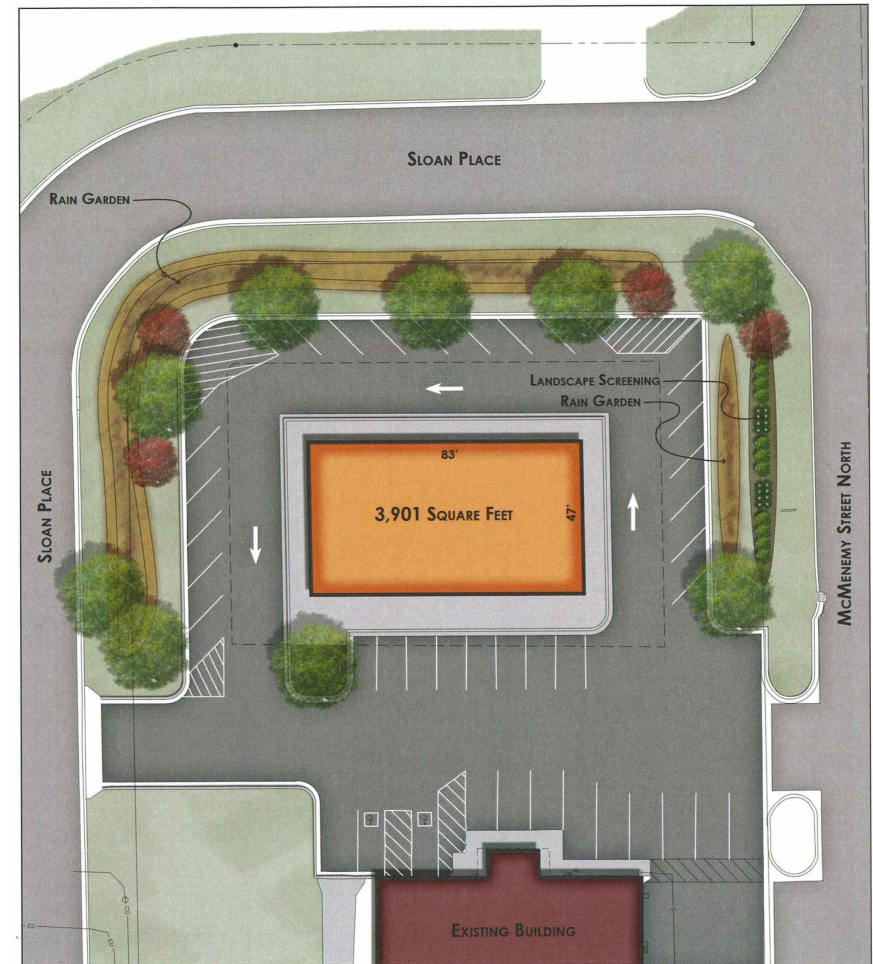
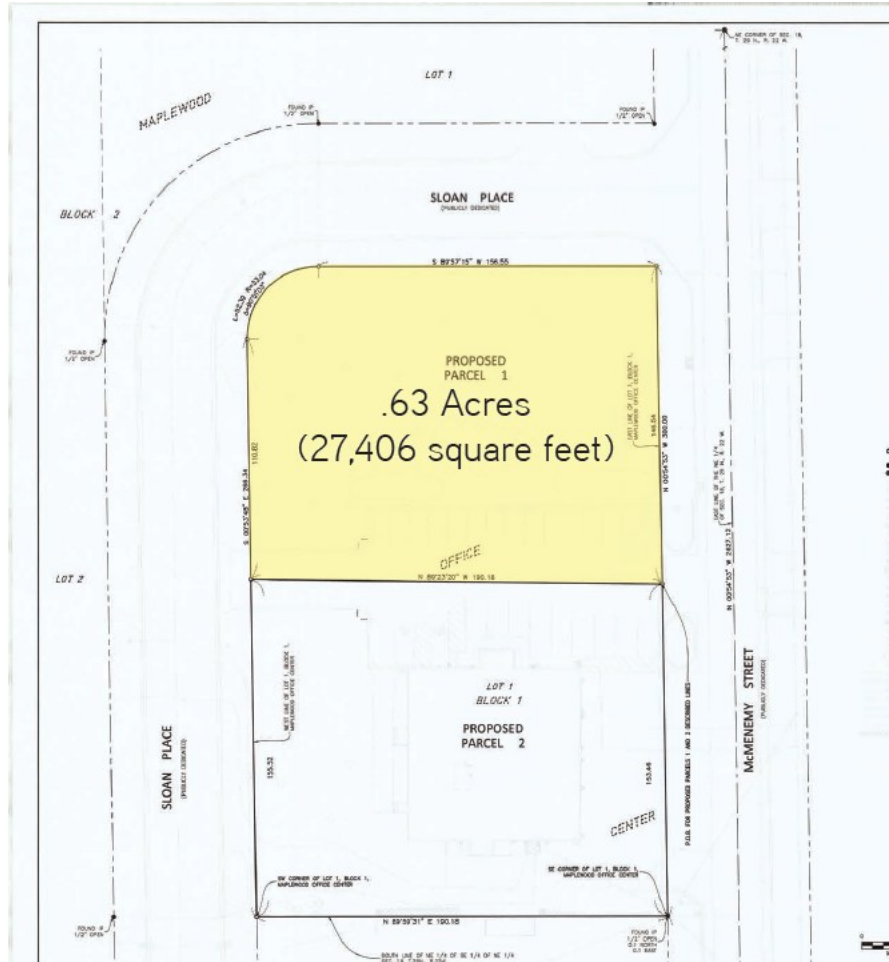


Mike Brass
612-750-4312
mike@mikebrass.com

Maplewood | MN 55117
.63 acres at McMenemy St



For Sale



4771 Bald Eagle Avenue | 101
White Bear Lake | MN 55110
www.TITUScre.com



Mike Brass
612-750-4312
mike@mikebrass.com