

 **CITIGROUP
CENTER**
201 S BISCAYNE



DELIVERING 2023

STATE-OF-THE-ART SUITE 1330: 2,145 RSF

CITIGROUPCENTER.COM



13TH FLOOR

SUITE 1330

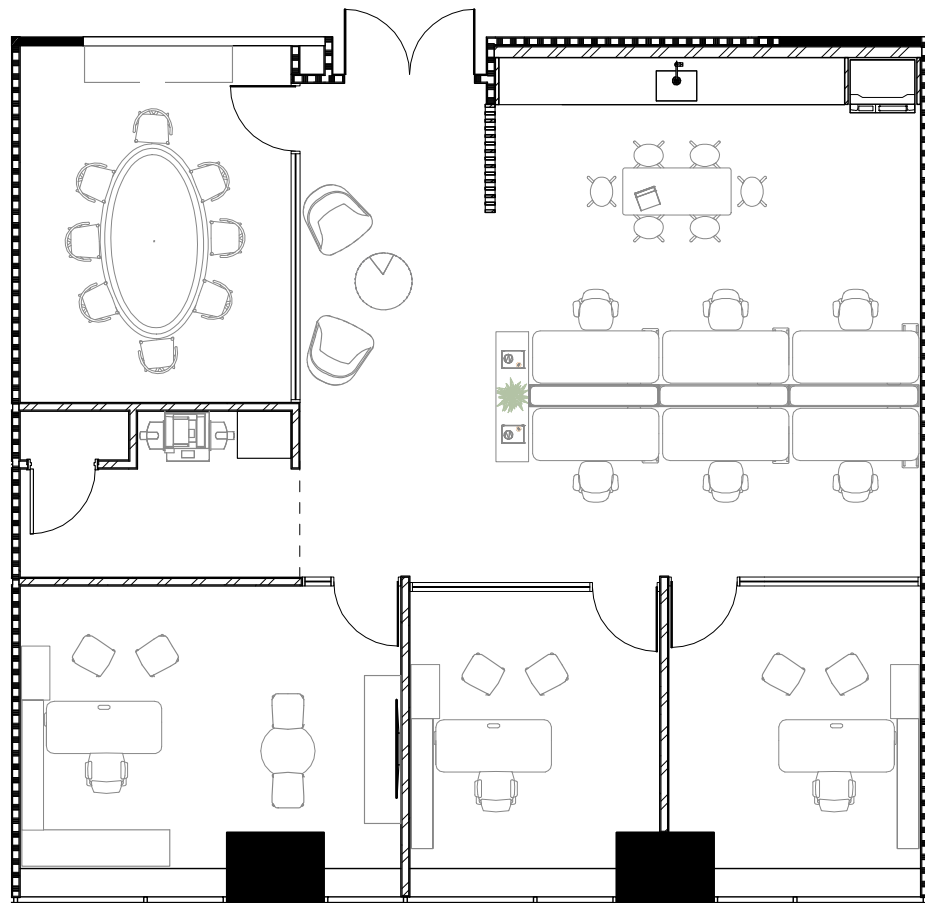
2,145 RSF

VIEW THE SPACE

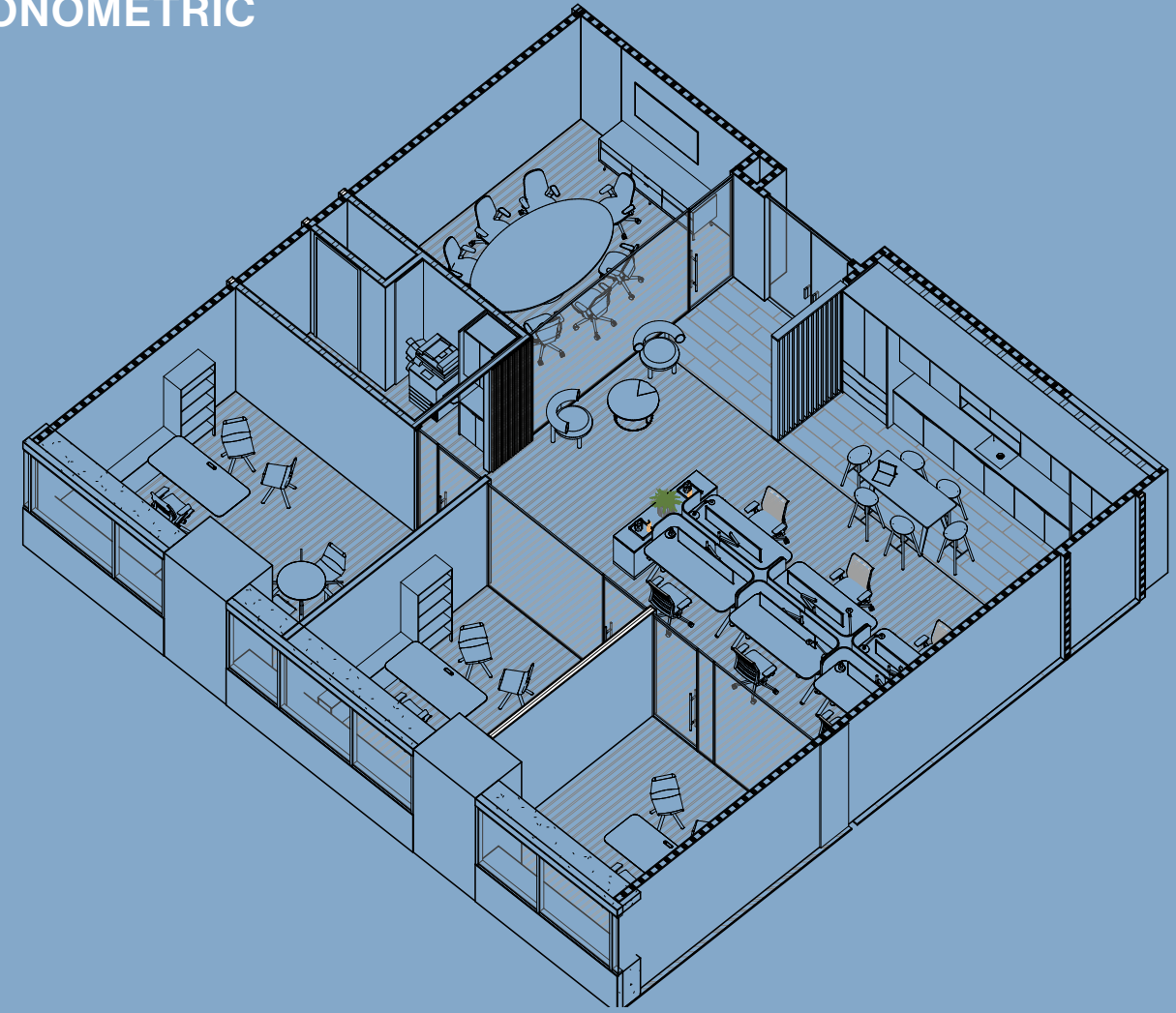


VIRTUAL TOUR

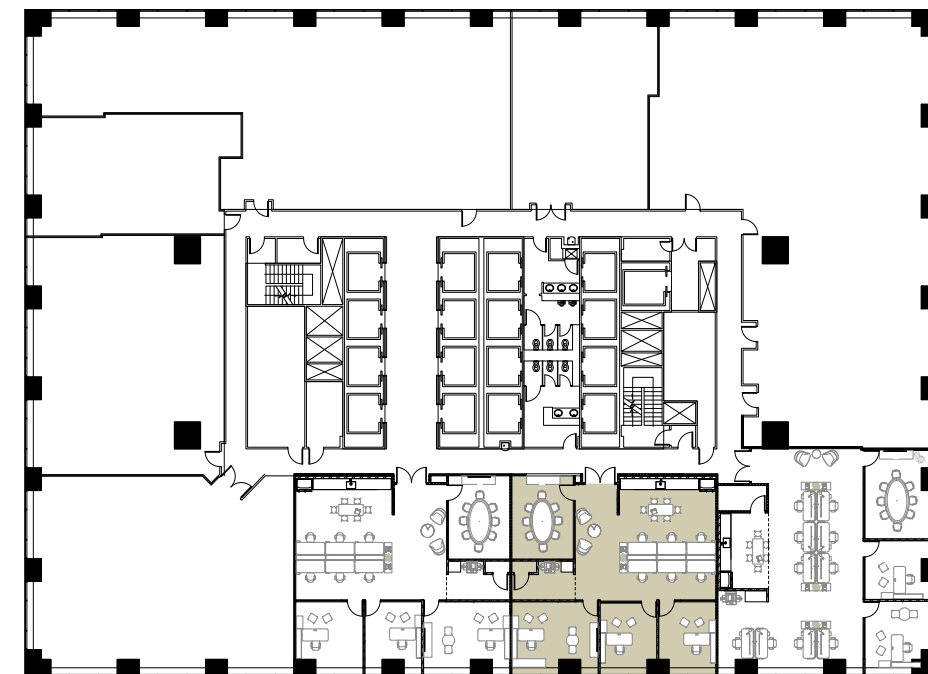
FLOOR PLAN



AXONOMETRIC



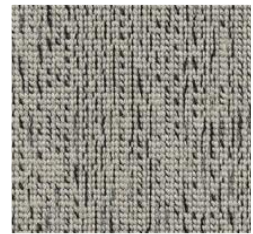
13TH FLOOR





FINISHES

MATERIAL PALETTE



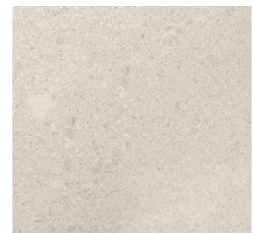
Carpet
Modulyss Grind 130



Acoustic Wallcovering
Sosquil Parthenon



Millwork
Neutral Oak



Stone Flooring
Inalco Masai Blanco



Stone Counter
Eternal Staturaio



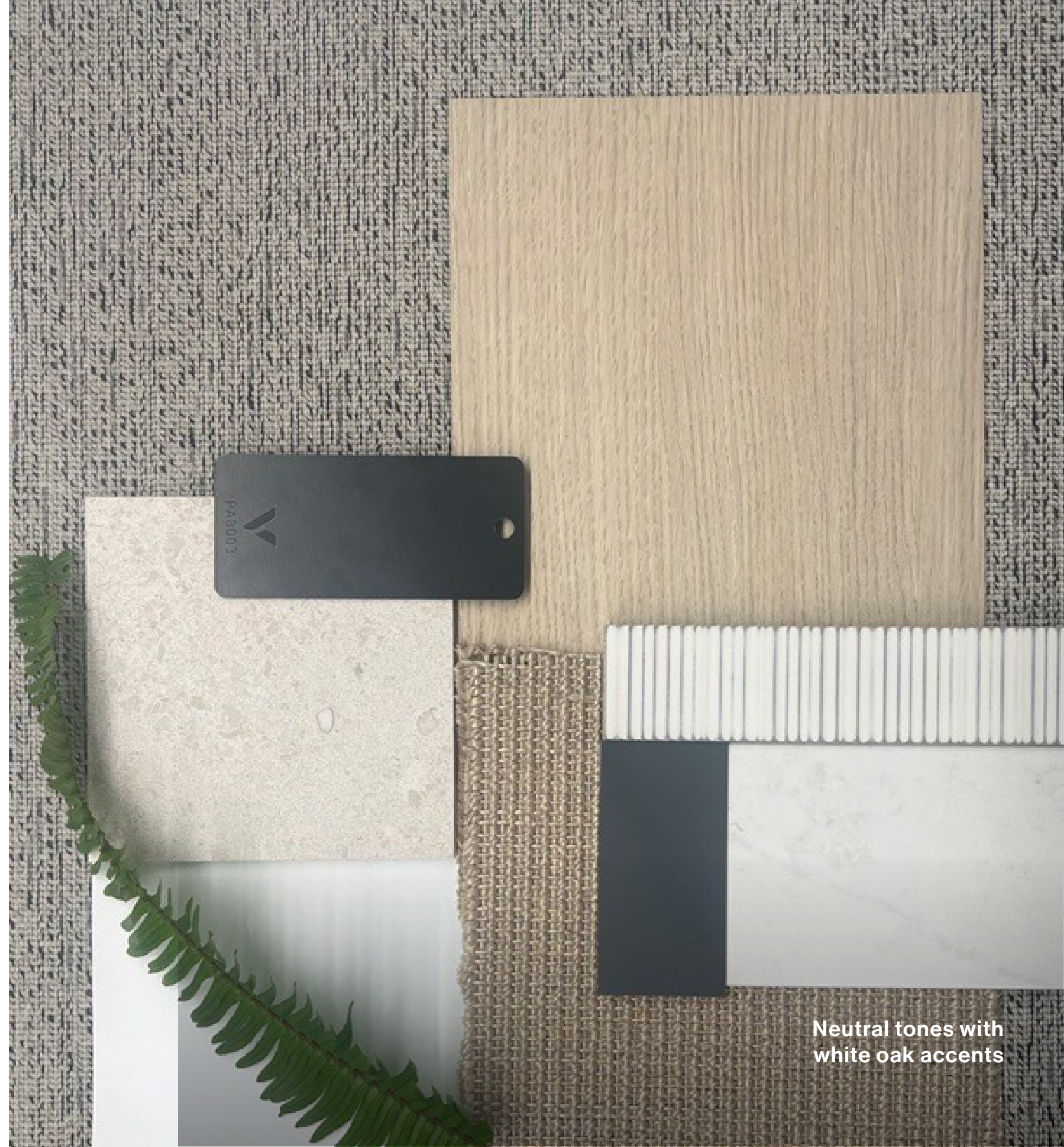
Millwork
Fenix Verde



Alternate LVT
Patcraft Handloom Loom



Tile Splash
Savoy Ribbed Rice Paper



Neutral tones with
white oak accents



INSPIRATION

Finished ceilings, tile & carpet flooring, wood doors & accents, light tones



Inspirational Images Only





**CITIGROUP
CENTER**
201 S BISCAYNE

FOR LEASING INQUIRIES, PLEASE CONTACT

STEVEN HURWITZ

305.960.8441

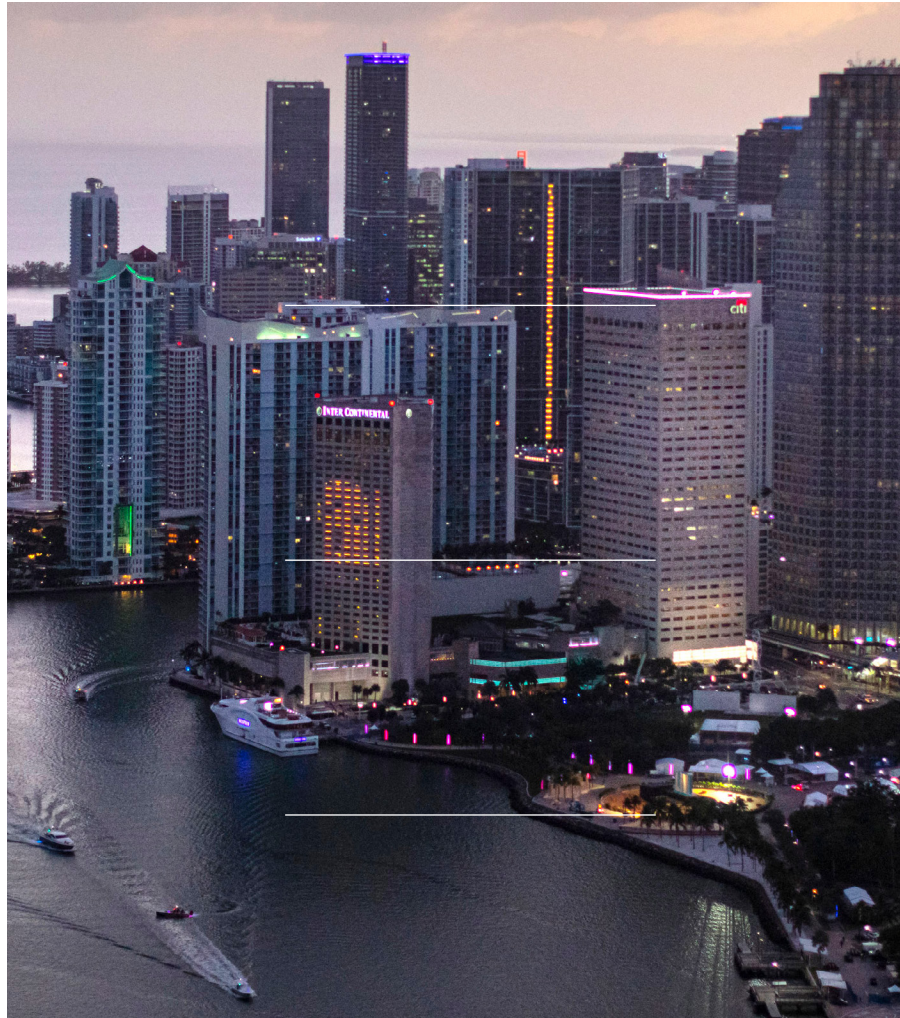
steven.hurwitz@jll.com

DOUG OKUN

305.960.8444

doug.okun@jll.com

CITIGROUPCENTER.COM



MONARCH
ALTERNATIVE CAPITAL



Tourmaline



©2023. Jones Lang LaSalle Brokerage, Inc. All rights reserved. All information contained herein is from sources deemed reliable; however, no representation or warranty is made to the accuracy thereof.